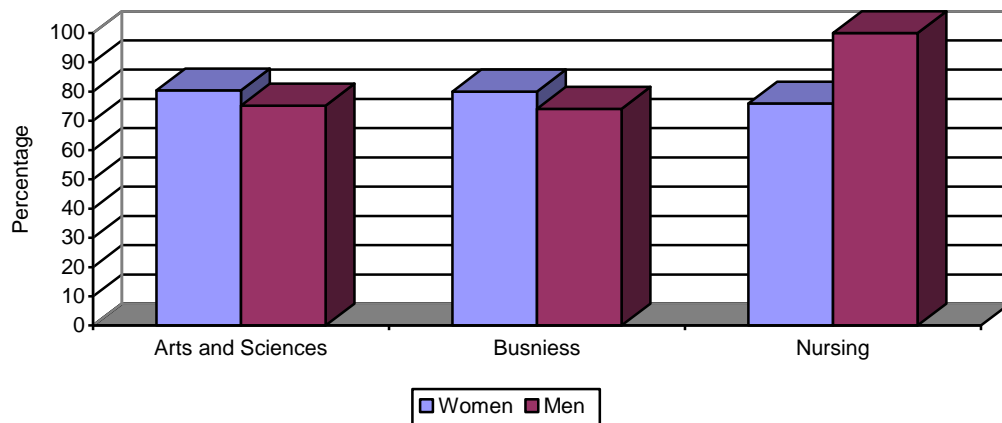


SECTION 4: UNIVERSITY DATA: ATTRITION AND GRADUATION RATES

Table 4.3: 2008 Freshman Graduation Rates by Ethnicity, School and Sex

	Freshmen	No./Percent Graduating in 4 years		No./Percent Graduating in 5 years		No./Percent Graduating in 6 years	
Black, Non-Hispanic	33	19	57.6%	25	75.8%	25	75.8%
American Indian/Alaskan Native	17	6	35.3%	7	41.2%	7	41.2%
Asian/Pacific Islander	121	81	66.9%	90	74.4%	92	76.0%
Hispanic	44	25	56.8%	27	61.4%	28	63.6%
International	16	11	68.8%	11	68.8%	12	75.0%
White, Non-Hispanic	752	555	73.8%	595	79.1%	601	79.9%
Not Reported	1	1	100.0%	1	100.0%	1	100.0%
Combined Total	984	698	70.9%	756	76.8%	766	77.8%
Arts and Sciences							
Women	428	322	75.2%	342	79.9%	344	80.4%
Men	286	189	66.1%	210	73.4%	215	75.2%
Total Arts and Sciences	714	511	71.6%	552	77.3%	559	78.3%
Business Administration							
Women	75	54	72.0%	59	78.7%	60	80.0%
Men	112	80	71.4%	82	73.2%	83	74.1%
Total Business Administration	187	134	71.7%	141	75.4%	143	76.5%
Nursing							
Women	79	51	64.6%	59	74.7%	60	75.9%
Men	4	2	50.0%	4	100.0%	4	100.0%
Total Nursing	83	53	63.9%	63	75.9%	64	77.1%
Combined Women	582	427	73.4%	460	79.0%	464	79.7%
Combined Men	402	271	67.4%	296	73.6%	302	75.1%
Total	984	698	70.9 %	756	76.8%	766	77.8%
Financial Aid Status							
Pell Grant Recipients	165	93	56.4%	110	66.7%	113	79.7%
Perkins, Federal Nursing, Subsidized Stafford (No Pell)	278	197	70.9%	210	75.5%	212	76.3%
No Pell, Perkins, Federal Nursing or Subsidized Stafford	541	408	75.4%	436	80.6%	441	81.5%

2008 Freshman Graduation Rates



*One student was removed from the original cohort due to death.