

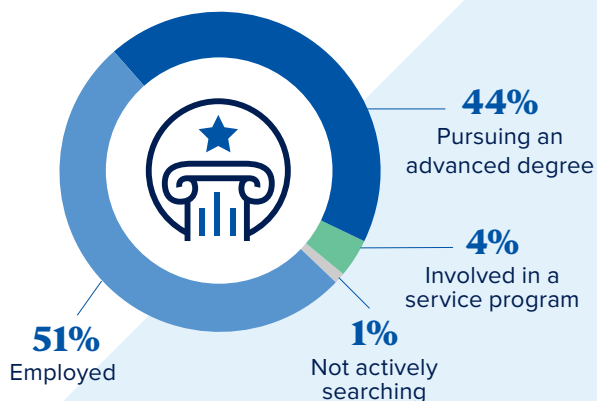
2021 Career Outcomes



FIRST DESTINATION

100%
Career Outcomes Rate*
(Based on a 80% knowledge rate)

Here is what our College of Arts and Sciences undergrads are doing within 6 months of graduation:



EXPERIENTIAL LEARNING



71%

Completed an internship or conducted research



43%

Participated in Research



52%

Participated in an internship

NOTABLE INTERNSHIP AND RESEARCH SITES

ACT Clinic
Behaven Kids
Blue Cross and Blue Shield of Nebraska
Boys Town National Research Hospital
CHI Health
Child Saving Institute
Children's Hospital & Medical Center Omaha
CNN
Conagra Brands

Creighton University
Deloitte
Department of Health and Human Services
Gallup
Hawaii Pacific Health
HDR, Inc.
Henry Doorly Zoo and Aquarium
Home Instead
International Trade Administration
Kaiser Permanente

Legal Aid of Nebraska
Mayo Clinic
McKesson Corporation
National Indemnity Company
Nebraska Medicine
Omaha Performing Arts
OneWorld Community Health Center
Orion
Physicians Mutual
Project Harmony
QLI

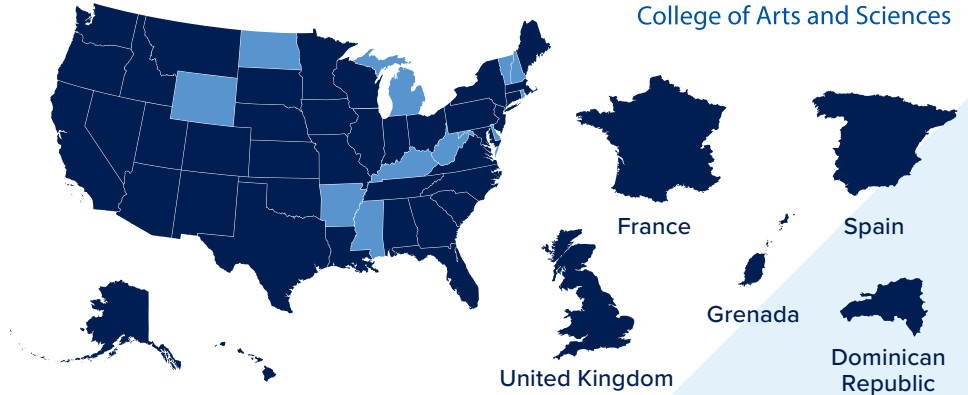
Sarpy County Juvenile Justice Center
Shutterfly
Tenaska
The Joslyn Art Museum
The Moton Museum
The Women's Center for Advancement
U.S. Department of Justice
U.S. Department of State
U.S. House of Representatives
U.S. Secret Service

WHERE OUR GRADUATES ARE GOING

2021 College of Arts and Sciences graduates reside, work or study in:



38 + **5**
States + **Countries**
Plus
Washington, D.C.



NOTABLE EMPLOYERS

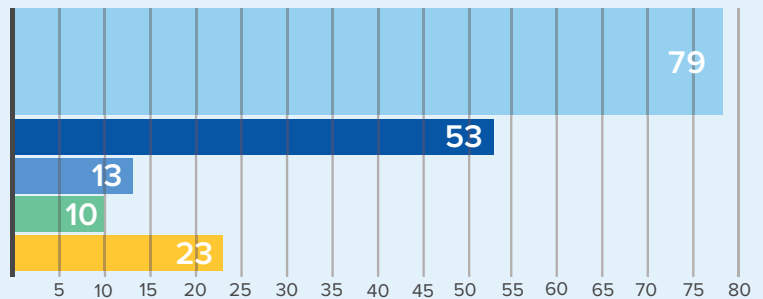


WHAT OUR GRADUATES ARE STUDYING

The College of Arts and Sciences prepares students to go into a wide variety of graduate and professional programs.

Health Professions
(Medicine, Dentistry, Pharmacy, Occupational Therapy, Physical Therapy)

Master's
Doctorate
Law
Other



NOTABLE GRADUATE AND PROFESSIONAL SCHOOLS

Boston College

Boston University

Creighton University

Dartmouth College

Des Moines University

Duke University

Gonzaga University

Iowa State University

Marquette University

Mayo Clinic

Oregon State University

Rockhurst University

Saint Louis University

Texas A&M University

The University of Chicago

The University of Iowa

The University of Kansas

The University of Kansas
Medical Center

University of Glasgow

University of Hawaii at Mānoa

University of Minnesota
Twin Cities

University of Missouri

University of Nebraska
Medical Center

University of Washington

Washington University
in St. Louis

Learn more: creighton.edu/ccas

*Creighton University measures the post-graduation career outcomes for its graduating class through first-destination surveys (FDS). The FDS data collection and reporting is managed by Analytics & Institutional Research in collaboration with the John P. Fahey Career Center following the procedures outlined in the NACE Standards and Protocols for Undergraduate First Destination Surveys.