

# 2022

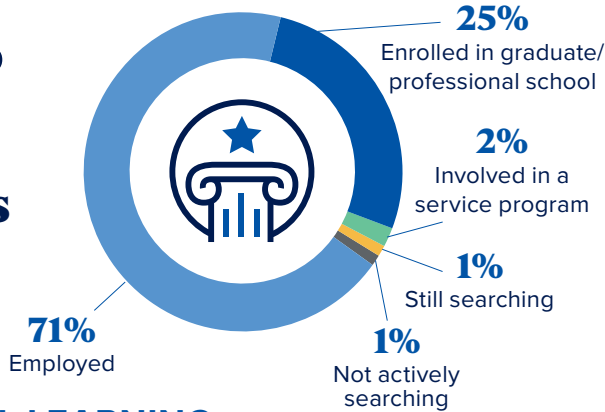


# Career Outcomes

## FIRST DESTINATION

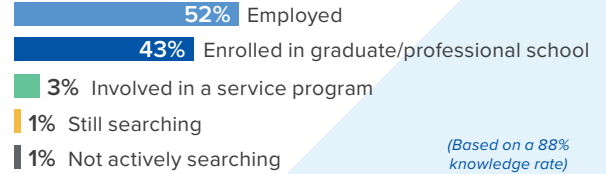
# 99% Career Outcomes Rate

(Based on a 90% knowledge rate)



### COLLEGE OF ARTS AND SCIENCES

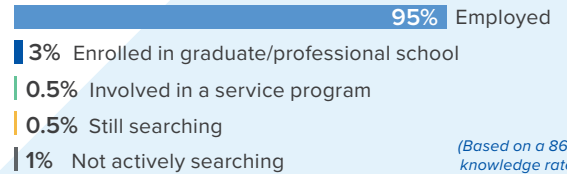
99% Outcome Rate



(Based on a 88% knowledge rate)

### COLLEGE OF NURSING

99% Outcome Rate



(Based on a 86% knowledge rate)

## EXPERIENTIAL LEARNING

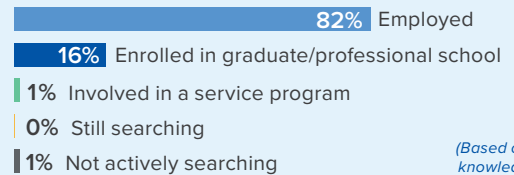


# 81% Participated in experiential learning such as an internship or research project

All College of Nursing students complete clinical rotations and long-term practicums as part of their coursework.

### HEIDER COLLEGE OF BUSINESS

100% Outcome Rate



(Based on a 96% knowledge rate)

## WHERE OUR GRADUATES ARE GOING



Creighton graduates are found in cities across the country and the world.

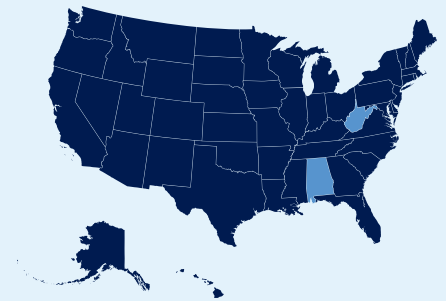
# 48 States

Plus Washington, D.C.

# +

# 9 Countries

Dominican Republic, England, France, Saipan, Scotland, South Africa, South Korea, Spain, Uganda



## NOTABLE INTERNSHIP SITES

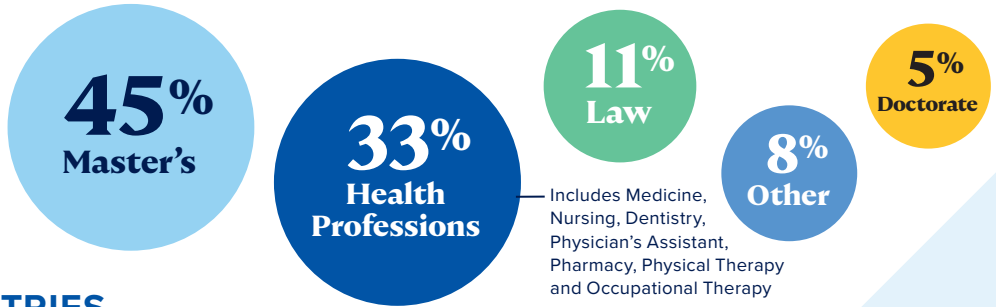
3M  
Amazon  
Berkshire Hathaway Homestate Companies  
Boys Town National Research Hospital  
Cargill  
Carson Group  
Charles Schwab  
CHI Health  
Children's Hospital & Medical Center – Omaha  
Conagra Brands  
Deloitte  
Dignity Health  
ESPN  
EY

Federal Reserve Bank of Kansas City  
Fiserv  
FNBO  
Gallup  
GE  
Goldman Sachs  
HDR  
JPMorgan Chase & Co.  
Kiewit  
KPMG  
Lutz  
Make-A-Wish  
Mayo Clinic  
Mutual of Omaha

NASA  
National Indemnity Company  
Nebraska Medicine  
Omaha's Henry Doorly Zoo and Aquarium  
PwC  
RSM US LLP  
Tenaska  
U.S. Department of Justice  
U.S. Department of State  
Union Pacific  
UnitedHealth Group  
Valmont Industries, Inc.  
Viterra  
Werner Enterprise

## PURSuing ADVANCED DEGREES

Creighton University prepares undergraduate students to go into a wide variety of graduate and professional programs.



## TOP EMPLOYER INDUSTRIES

1. Health Care
2. Financial Services and Insurance
3. Accounting
4. Technology and Software
5. Education
6. Advertising, Public Relations and Marketing
7. Scientific/Laboratory
8. Consulting
9. Community and Social Services
10. Government/Politics
11. Agriculture and Environmental Services
12. Biotech, Pharma and Life Sciences
13. Transportation and Logistics
14. Nonprofit/NGO
15. Sports, Media and Entertainment
16. Manufacturing
17. Legal
18. Food and Beverage
19. Real Estate
20. Hotel, Hospitality and Tourism
21. Energy and Utilities
22. Military and Defense
23. Fine and Performing Arts
24. Retail/Fashion

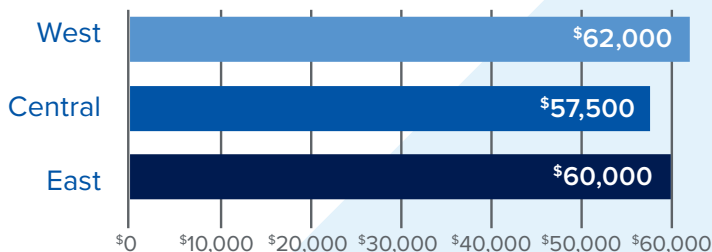
## WHAT OUR GRADUATES ARE EARNING



# \$58,200

Median Salary Overall

### By Region



### College of Arts and Sciences

Median salary overall  
\$40,000

#### By region

**West** \$41,728  
**Central** \$40,000  
**East** \$37,864

### College of Nursing

Median salary overall  
\$61,940 (\$29.77/hr)

#### By region

**West** \$64,000  
**Central** \$60,000  
**East** \$65,000

### Heider College of Business

Median salary overall  
\$60,000

#### By region

**West** \$68,000  
**Central** \$60,000  
**East** \$65,000

## NOTABLE EMPLOYERS



Learn more: [creighton.edu](http://creighton.edu)

Creighton University measures the post-graduation career outcomes for its graduating class through first-destination surveys (FDS). The FDS data collection and reporting is managed by Analytics & Institutional Research in collaboration with the John P. Fahey Career Center following the procedures outlined in the NACE Standards and Protocols for Undergraduate First Destination Surveys.