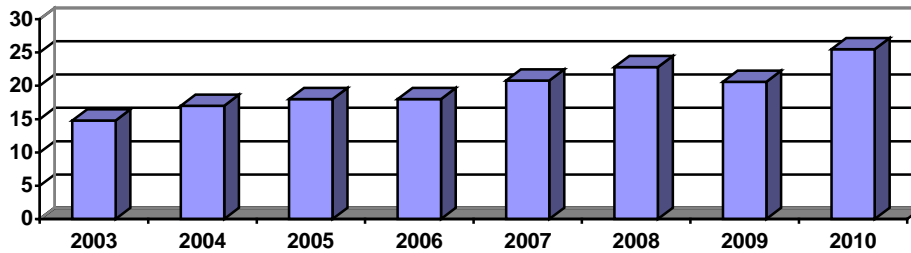


SECTION 2: UNIVERSITY DATA: NEW UNDERGRADUATE STUDENT INFORMATION

Table 2.3: Enrolled Freshmen Demographic Information Fall 2003 – 2010

| Fall of Enrolled | 2003 | 2004 | 2005 | 2006 | 2007 | 2008 | 2009 | 2010 |
|------------------------|--------------|--------------|--------------|--------------|--------------|--------------|--------------|--------------|
| Enrolled | 936 | 968 | 972 | 965 | 950 | 985 | 1,054 | 1,012 |
| Men | 39.3% | 39.6% | 42.1% | 38.5% | 39.2% | 40.8% | 39.8% | 39.9% |
| Women | 60.7% | 60.4% | 57.9% | 61.5% | 60.8% | 59.2% | 60.2% | 60.1% |
| Mean ACT | 25.8 | 25.8 | 25.9 | 26.0 | 26.6 | 26.3 | 26.5 | 26.5 |
| High School Rank: | | | | | | | | |
| Top 10% | 38.2% | 38.5% | 40.3% | 44.2% | 42.7% | 41.9% | 41.3% | 43.5% |
| Top 30% | 74.1% | 75.9% | 79.1% | 75.3% | 80.3% | 78.3% | 78.5% | 79.1% |
| Top 50% | 90.3% | 91.7% | 94.9% | 91.7% | 96.1% | 92.7% | 92.2% | 94.8% |
| Roman Catholic | 63.3% | 63.1% | 60.7% | 62.8% | 67.3% | 62.9% | 60.9% | 61.2% |
| Ethnicity: | | | | | | | | |
| African American | 2.5% | 2.7% | 3.6% | 2.7% | 2.9% | 3.4% | 3.2% | 2.2% |
| Native American | 1.3% | 2.1% | 1.4% | 1.5% | 1.8% | 1.7% | 1.4% | 2.4% |
| Asian | 6.9% | 8.5% | 9.1% | 10.7% | 11.3% | 12.4% | 11.1% | 12.9% |
| Hispanic | 4.1% | 3.7% | 3.9% | 3.1% | 4.8% | 5.3% | 4.9% | 6.9% |
| Native Hawaiian | | | | | | | | 1.1% |
| Ethnic Minority | 14.8% | 17.0% | 18.0% | 18.0% | 20.8% | 22.8% | 20.6% | 25.5% |
| International | 0.7% | 0.7% | 0.3% | 0.6% | 1.1% | 1.5% | 1.5% | 1.2% |
| Caucasian | 84.5% | 82.2% | 81.4% | 81.3% | 78.0% | 75.7% | 77.9% | 72.0% |
| Unknown | | | | | | | | 1.3% |

Percentage Ethnic Minority Freshmen



Average ACT Composite Score

