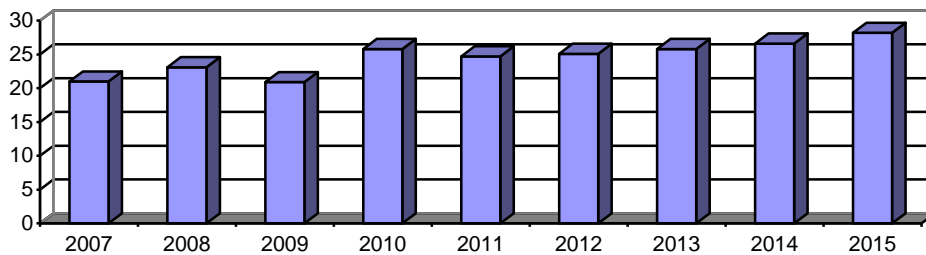


SECTION 2: UNIVERSITY DATA: NEW UNDERGRADUATE STUDENT INFORMATION

Table 2.3: Enrolled Freshmen Demographic Information Fall 2007 – 2015

Fall of Enrolled	2007	2008	2009	2010	2011	2012	2013	2014	2015
Enrolled	950	985	1,054	1,012	975	944	966	1025	1068
Men	39.2%	40.8%	39.8%	39.9%	39.9%	41.9%	39.6%	43.8%	41.9%
Women	60.8%	59.2%	60.2%	60.1%	60.1%	58.1%	60.4%	56.2%	53.9%
Mean ACT	26.6	26.3	26.5	26.5	27.1	26.6	26.8	26.7	26.8
High School Rank:									
Top 10%	42.7%	41.9%	41.3%	43.5%	43.8%	39.6%	40.4%	37.5%	36.5%
Top 30%	80.3%	78.3%	78.5%	79.1%	81.3%	78.5%	75.3%	79.0%	74.6%
Top 50%	96.1%	92.7%	92.2%	94.8%	95.8%	93.2%	92.5%	92.6%	91.5%
Roman Catholic	67.3%	62.9%	60.9%	61.2%	59.8%	62.6%	61.4%	54.4%	54.5%
Ethnicity:									
African American	2.9%	3.4%	3.2%	2.2%	2.3%	2.2%	1.6%	2.4%	1.5%
Native American	1.8%	1.7%	1.4%	2.4%	0.7%	0.3%	0.5%	0.4%	0.7%
Asian	11.3%	12.4%	11.1%	12.9%	9.7%	10.3%	9.7%	10.4%	11.1%
Hispanic	4.8%	5.3%	4.9%	6.9%	7.0%	7.3%	8.3%	8.2%	9.2%
Native Hawaiian				1.1%	0.0%	0.6%	0.5%	0.4%	0.3%
Two or more					4.7%	3.8%	4.7%	3.9%	4.8%
Nonresident Alien	1.1%	1.5%	1.5%	1.2%	1.4%	1.8%	2.0%	2.9%	2.1%
Caucasian	78.0%	75.7%	77.9%	72.0%	72.9%	72.8%	71.5%	70.8%	69.6%
Unknown				1.3%	1.3%	0.8%	1.2%	0.5%	0.7%

Ethnic Minority Freshmen, Excluding Nonresident Alien Students



Average ACT Composite Score

