

2022



Creighton
UNIVERSITY

Heider
College of Business

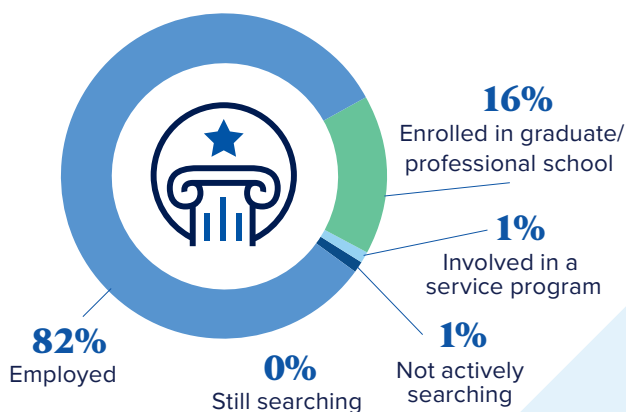
Career Outcomes

FIRST DESTINATION

100% Outcomes Rate

(Based on a 96% knowledge rate)

What our Heider College of Business undergrads are doing within 6 months of graduation:



EXPERIENTIAL LEARNING



74% Completed an internship

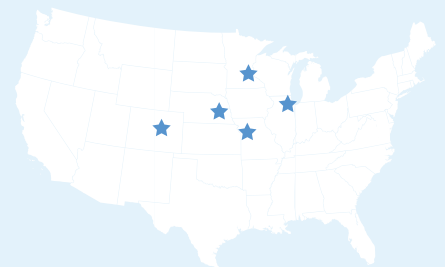


5 Internships

Highest number reported by a single student

TOP 5 INTERNSHIP CITIES

1. Omaha
2. Kansas City
3. Minneapolis
4. Denver
5. Chicago



NOTABLE INTERNSHIP AND RESEARCH SITES

3M	Cargill	FNBO	MassMutual
Acclaro Valuation Advisors	Carson Group	FTI Consulting	Mutual of Omaha
Amazon	Charles Schwab	Gallup	National Indemnity Company
Ameriprise Financial	Conagra Brands	GE	Orion Advisor Solutions
Arthur J. Gallagher & Co.	Deloitte	Goldman Sachs	PwC
BerganKDV	DMSi Software	Green Plains	RSM US LLP
Berkshire Hathaway Homestate Companies	Dundee Venture Capital	HDR	RubinBrown LLP
Bland & Associates, P.C.	ESPN	JPMorgan Chase & Co.	Tenaska
Bridgepoint Investment Banking	EY	Kiewit	Tributary Capital Management
Bridges Trust Company	Federal Reserve Bank of Kansas City	KPMG	UBS
Burlington Capital	Fiserv	Lincoln Financial Group	Union Pacific
C.H. Robinson Worldwide, Inc.	Five Elms Capital	Lutz	UnitedHealth Group
		Mariner Wealth Advisors	Werner Enterprises

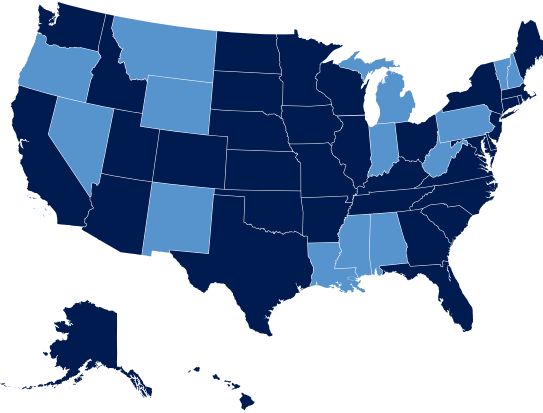
WHERE OUR GRADUATES ARE GOING

Creighton graduates are found across the country.



35
States

Plus
Washington, D.C.



NOTABLE EMPLOYERS



WHAT OUR GRADUATES ARE EARNING

Median Salary Overall

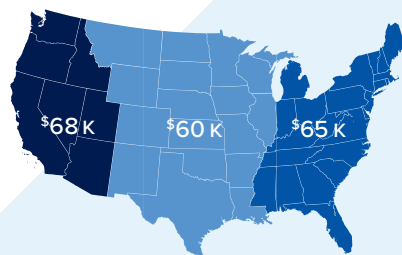
\$60,000

Top Earner

\$110,000

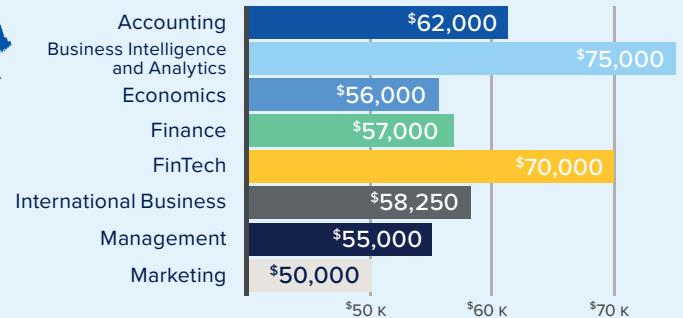
Plus a \$13,000
signing bonus

Median Wage by Region



● West ● Central ● East

Median Wage by Major



NOTABLE GRADUATE AND PROFESSIONAL SCHOOLS

Brown University
Creighton University
Duke University
Loyola University Chicago

University of Houston
University of Minnesota Twin Cities
University of Missouri Kansas City
University of Southern California

University of Wisconsin–Madison
University of St. Thomas

Learn more: creighton.edu/business

Creighton University measures the post-graduation career outcomes for its graduating class through first-destination surveys (FDS). The FDS data collection and reporting is managed by Analytics & Institutional Research in collaboration with the John P. Fahey Career Center following the procedures outlined in the NACE Standards and Protocols for Undergraduate First Destination Surveys.