

The College Search Process and The Application Process for Creighton

Sarah Richardson

Director of Admissions and Scholarships



Creighton
UNIVERSITY

Starting Your Student on the Path of Success

- Developing a record of achievement in H.S.
- Enjoying and Learning from the College Search Process
- Some students will benefit from leaving the Omaha area
- Others will thrive at Creighton

Can Teenagers be mature and forward thinking?

- Talk to your students about what college means and the importance of doing their best to improve their college options when they are a high school senior
- Try to cultivate their interests in thinking about future areas for careers...Emphasize the importance of a full and broad education
- Teenagers need to be more accountable, as parents we are not preparing them and they are struggling at college...sports, social involvements should come after academics not in place of them

Admission and/or Merit Scholarships to Quality Selective Colleges

- High School Performance
- Quality of Curriculum and Level of Academic Challenge
- Level of Work Effort and Record as an Achiever
- Demonstrated Creative Potential
- Record of Service and Leadership
- Special Talents

— Test Optional Schools

<http://www.fairtest.org/university/optional>

A Smart College Search

- Parents offer to be their “executive assistant”
 - This will reduce tension between you and your student
- Identify factors that are important to finding the right college fit
- Select colleges whose academic profile has students like your student
- Let them pick the college but negotiate the required attributes—you may know more than they do on this topic

Parent Involvement

- 66% Helping with some of the research and paperwork
- 27% My student is doing most of the research and paperwork
- 8% Doing most of the research and paperwork
- 24% Said they would consider filling out forms posing as a student (15%) or had done so already (12%)

Information based on research completed as a part of E-expectation survey conducted by Noel-Levitz, 2011

Who will make the final decision

- 61% We will discuss the options and agree upon a particular school
- 35% It will be completely up to my student
- 4% I will make the decision for my student

Information based on research completed as a part of E-expectation survey conducted by Noel-Levitz, 2011

Helpful sites – more information

- [College.gov](http://www.college.gov/) (<http://www.college.gov/>) - This site, launched in Fall 2008 by the U.S. Department of Education intends to be "the go-to source for information and resources about planning, preparing and paying for postsecondary education."
- [Know How 2 Go](http://www.knowhow2go.org/) (<http://www.knowhow2go.org/>) - From middle school through high school, this site will walk you through what you need to know - and what you need to do - at every step on your way to college.
- [Adventures in Education](http://www.aie.org/HighSchool/index.cfm) (<http://www.aie.org/HighSchool/index.cfm>) - A non-profit site by the Texas Guaranteed Student Loan Corporation. This link takes you to the section for high school students, but there are also resources for middle school students, parents, counselors, and others.

Helpful sites – more information

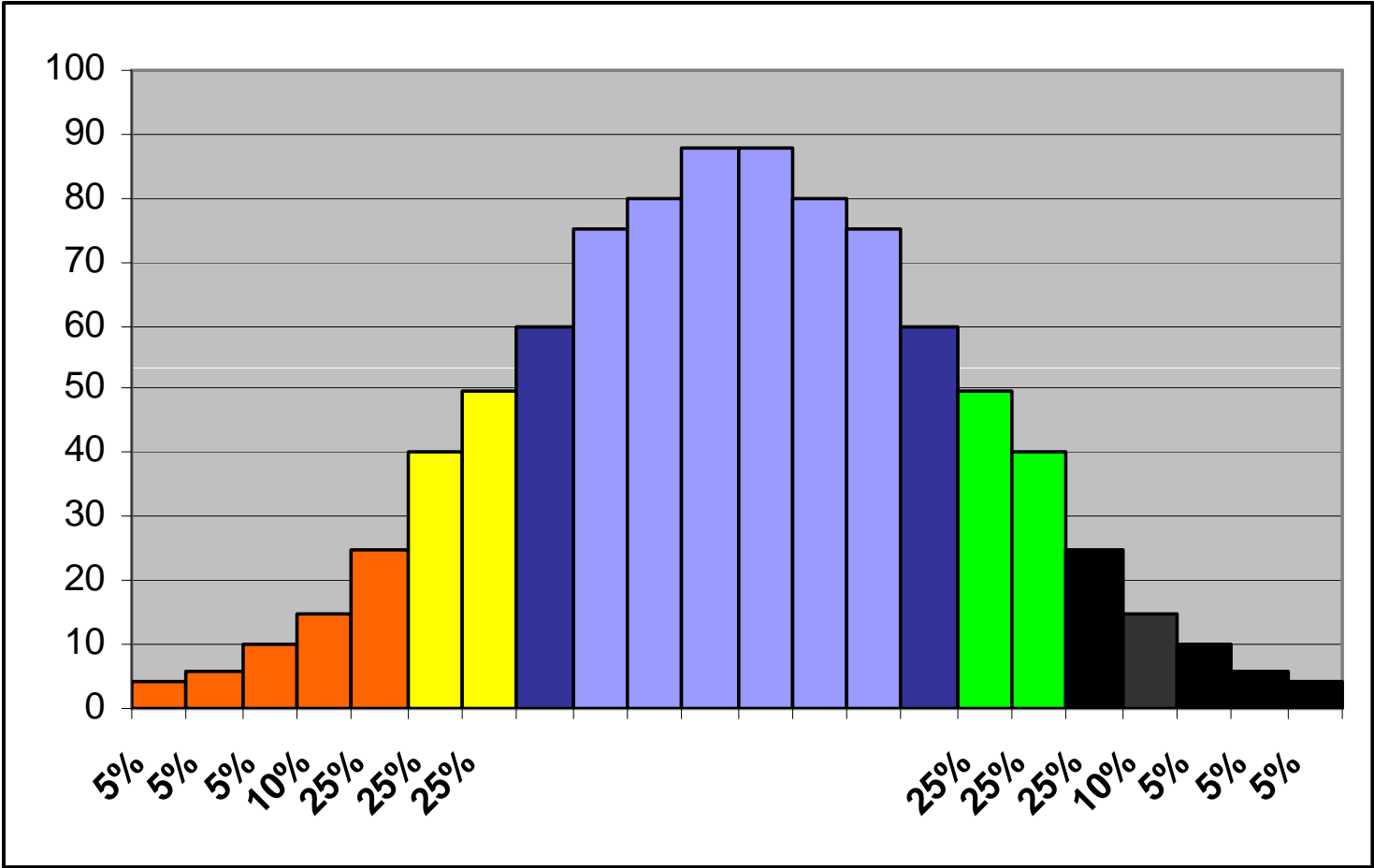
- **U-CAN University & College Accountability Network** (<http://www.ucan-network.org/>) - is designed to give, in a common format, prospective students and their families concise, Web-based consumer-friendly information on the nation's nonprofit, private colleges and universities.
- **Voluntary System of Accountability** (<http://www.collegeportraits.org/>) - Similar to U-CAN, but for public colleges and universities.
- **College Navigator** (<http://nces.ed.gov/collegenavigator/>) - This U.S. Department of Education site offers tons of data, as well as maps showing each college's location.

Helpful sites – more information

- [College Board](#)
(http://collegesearch.collegeboard.com/search/adv_typeofschool.jsp)
- Use their "College MatchMaker" to zero in on colleges that are likely to be right for you.
- [U.S. News & World Report "Best Colleges"](#) (<http://colleges.usnews.rankingsandreviews.com/best-colleges>) - Beyond its rankings, this site offers a wealth of data and guidance on the 1,400 colleges it lists.
- [Princeton Review](#)
(<http://princetonreview.com/colleges-majors.aspx>) - Insights from student surveys, and click on "Best Fit School Search"

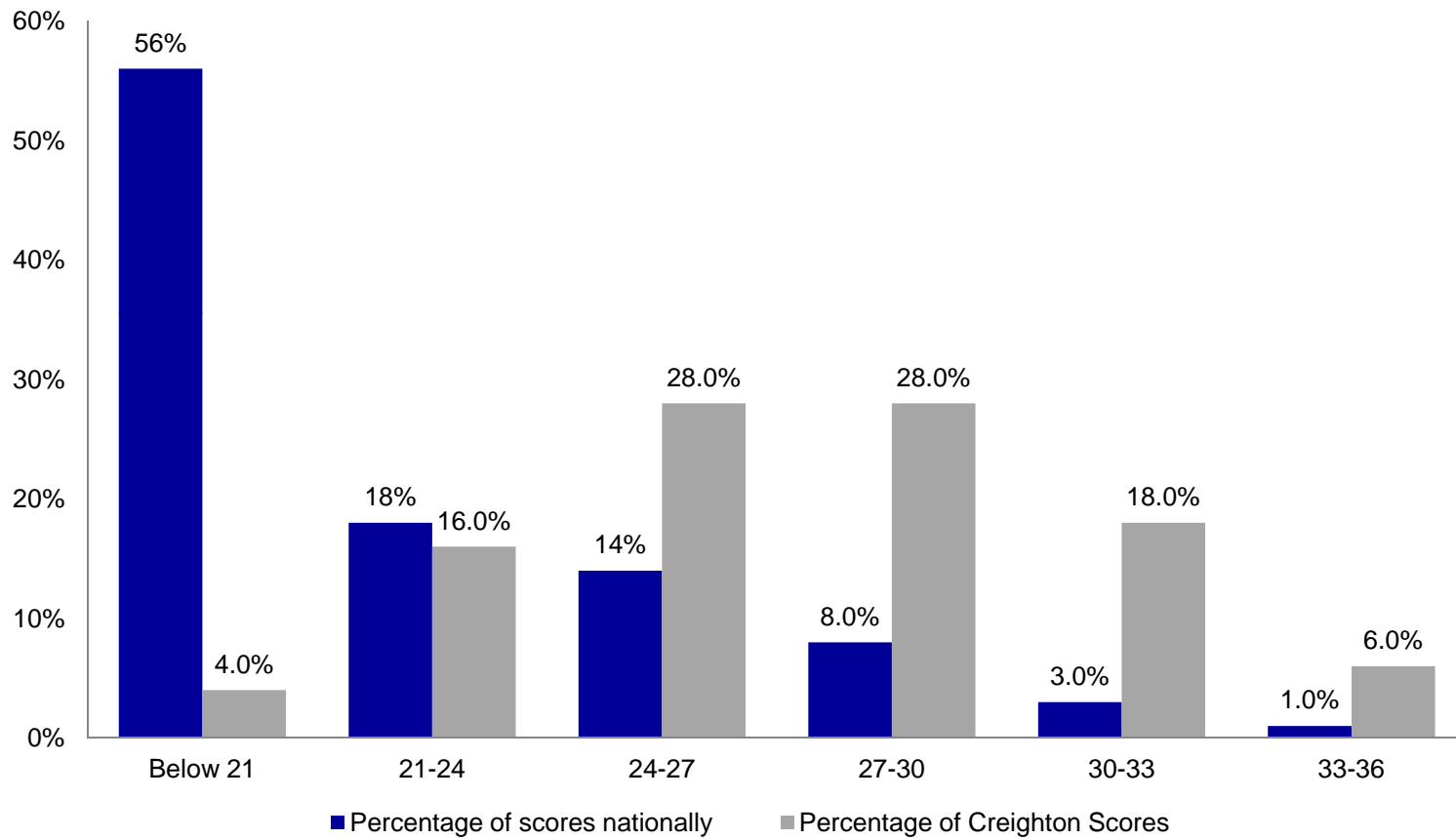
Creighton or Other Colleges?

- Some students will seek a different venue than Omaha
 - They feel seeing another part of the country will be a stimulating learning opportunity
- Many will enjoy Creighton's national student body and feel they went away for college, even though they stayed at Creighton
- Creighton's national reputation, an advantage throughout their life— Creighton is Top 50 in Nation, Top 10 Catholic, Top 6 Midwest Private Univ.
- Some should attend less competitive colleges because the pace at Creighton will frustrate and demoralize them...fit is more important than all other factors



Creighton is Nationally Respected and Selective...is it a healthy fit for your child?

- Creighton's faculty can organize their classes towards high achievers, which improves the learning environment and the value of Creighton
- 44% of the freshmen ranked in the Top 10% of their high school
- 36% were members of their National Honors Society
- 11% of the freshmen ranked in the Top 2% of the nation in National Tests: ACT/SAT... 51% ranked in the Top 12% of the National tests



— The Ideal Preparation of Students for Creighton

- The Admissions Office can assist your student in determining if they have prepared well for Creighton.
- We have your student's best interest in mind when reviewing files.

Poor Fit Hurt the Students and Creighton

- Students who are dismissed have a terrible time finding other quality options
- Creighton can not and should not turn down other applicants who have worked harder and have more dedication to being a student at Creighton
- Students who flunk out cost themselves their self-esteem and confidence

Poor Fit Hurt the Students and Creighton

- No other selective Jesuit University admits sub-par employee children for admission, admission is based on the student's record. Close calls win but not students below
- Students with a B or B+ average who have not taken the strongest course load and have lower ACT scores will likely be deferred and asked to transfer into Creighton after developing a plan of achievement with the admissions office

Our Services to Families if Creighton is not the Right Fit

Patty Suarez , Associate Director of Admissions and Sarah Richardson, Director of Admissions and Scholarships will provide sessions to families that are uncertain if they have the academic strength to find Creighton a good fit. They are able to advise the family on all of their options. Feel free to contact the Admissions Office 280-2703 to arrange for an appointment.



What to do to prepare for Creighton

The Ideal Preparation of Students for Creighton

- Take the best college prep courses available that the student can achieve a B or higher
 - (today's C is yesteryear's D)
- Minimum of 4 or 5 “academic solids” each year in high school
- Achieve a minimum B to B+ average and score a 23 or higher on the ACT
- Class performance and effort is more important than the ACT

What do we consider?

- Creighton looks for excellent students who demonstrate their abilities both in and out of class. Just because you are an employee doesn't mean your child gets admitted.
- Students are accepted to Creighton University based on the quality of the following factors:
 - high school courses taken
 - class performance
 - test scores from either the ACT or SAT I
 - extracurricular activities
 - personal statement
 - recommendations

Recommended curriculum

Subject	Minimum units	Recommended units
English	4	4
Algebra and Higher Mathematics	3	4
Natural Science (with labs)	2	3
Social Sciences	2	4
Foreign Languages	2	3
Electives	3	3
Total	16	21

NOTE: A unit is equal to a year

Standardized testing

- Creighton accepts the highest composite score on the ACT or the best combined total of Math and Verbal on the SAT I.
- Creighton does not require or review the written portion of either test in its admission process. BUT we recommend you take the writing portion as many schools do review the writing portion.
- Test early and often to score as high as possible.

It is up to the student

- Never assume you are “in”
- Always provide as much detail as possible if there is something to explain in the application file
- Start early! Most schools will begin accepting applications August 1st prior to your senior year
- Visit other campuses to reaffirm your decision to attend the school you have selected

Contact Information

- Sarah Richardson
 - sarahrichardson@creighton.edu
- Patty Suarez
 - pattys@creighton.edu
- Mary E. Chase
 - marychase@creighton.edu



Dependent Tuition Remission Benefit

Toni Parsley

Human Resources



Creighton
UNIVERSITY

Tuition Remission Benefit

- Student/employee eligibility
- Excluded programs & degrees
- Policy updates

Student/Employee Eligibility

- Student accepted at Creighton
- Student age up to 24*
- Student must remain “In Good Academic Standing”
- Maximum tuition remission = 136 hours

*employees hired before 10/01/2004 dependent age up to 25

Dependent Remission Benefit

Hire dates on or after October 1, 2004:

- Benefit eligible service requirement:
 - 3 years consecutive completed service – 50%
 - 4 years consecutive completed service – 75%
 - 5 years consecutive completed service – 100%

Hire dates prior to October 1, 2004:

- 3 completed years of service requirement - 100%

Policy Change – Financial Aid and Tuition Remission

- If a new student enrolls after January 1, 2012, and is eligible for both tuition remission and a CU merit scholarship, the student will only receive the larger of the two
- Students enrolled prior to January 1, 2012, are grandfathered
- Only impacts employees who are under 5 years of continuous completed service

Example #1

- Student A receives a \$10,000 CU academic scholarship
- Student A's parent is eligible for 50% remission

Tuition	\$30,400
CU Academic Scholarship	\$10,000
Tuition Remission at 50%	\$15,200
Parent responsible for difference between tuition and tuition remission	\$15,200

Example #2

- Student B receives a \$15,000 CU academic scholarship
- Student B's parent is eligible for 75% remission

Tuition	\$30,400
CU Academic Scholarship	\$15,000
Tuition Remission at 75%	\$22,800
Parent responsible for difference between tuition and tuition remission	\$7,600

Eligible Programs & Degrees

- Arts & Sciences
- College of Business Administration
- Nursing (BSN only)
- University College
- Summer Sessions

Excluded Programs & Degrees

- Professional Schools
- Graduate School
- Independent Study Programs
- Accelerated Nursing Program
- Advanced Placement courses
- Travel Courses

Policy Dates & Rules

- Complex timing & rules
- Significant \$\$ involved
- Please read & understand policy
- Please follow administrative processes
 - Watch for communications from HR regarding release of applications via Blue Q



FACHEX and Tuition Exchange Programs Information

Patricia Hall

Registrar



Creighton
UNIVERSITY

Creighton Tuition Benefit Programs for Dependents to Attend College

Creighton has three separate tuition benefit programs:

- Tuition remission – dependents attend Creighton
- Faculty and staff Children EXchange Program (FACHEX) - dependent children attend another Jesuit institution
- Tuition Exchange Program - dependent children attend one of 500 other participating colleges/ universities

FACHEX and Tuition Exchange Programs

Eligibility

- Employee must be eligible for the 100% tuition remission benefit in order to qualify for either FACHEX or Tuition Exchange (*see Human Resources for complete criteria and information*).
- FACHEX and Tuition Exchange are for dependent children only.
- Dependent children must be full time, undergraduate, degree-seeking students in order to be part of FACHEX or Tuition Exchange.

FACHEX and Tuition Exchange Programs

Eligibility

- Eligibility for the FACHEX and Tuition Exchange benefit does not guarantee the benefit will be received.
- FACHEX and Tuition Exchange are both scholarship programs and are awarded on a competitive basis.
- The number of people who apply for and are eligible for FACHEX or Tuition Exchange may exceed the number that Creighton may certify in a given year. *A point system based on length of service at Creighton and previous use of this benefit is used to determine who is selected for certification.*
- The dependent children must be admitted and offered the exchange scholarship by the school of their choice. Offers of admission and scholarship are generally made based on academic criteria. *These decisions are all made at the other institution, not Creighton.*

FACHEX and Tuition Exchange Programs

Imports and Exports

- FACHEX and Tuition Exchange are multi-school exchange programs.
- Creighton *exports* students to other institutions – students who are dependents of Creighton faculty and staff.
- Other institutions *import* students to Creighton – students who are dependents of faculty and staff from participating colleges/universities.
- Creighton needs to keep a balance of imports and exports, yet exports to specific institutions does not require imports from those same specific institutions.

FACHEX and Tuition Exchange Programs

Application

- Applications may be submitted to the Registrar's Office anytime during the fall semester, but must be received by December 1. *Applications received after December 1 will not be accepted.*
- Applications are available today or may be found at www.creighton.edu/registrar/resourcesandforms.
- Students must follow the admission application procedures and deadlines for the schools of their choice.

FACHEX and Tuition Exchange Programs

Tuition and Fees Coverage

- The FACHEX program pays full tuition at most institutions. Board and room charges, books, and other fees are not covered.
- Most Tuition Exchange schools pay for tuition only. A few institutions offer room and board in addition to tuition. Very expensive schools are allowed to cover only a portion of the tuition.

FACHEX and Tuition Exchange Programs

Tuition and Fees Coverage

- No tuition changes hands between institutions.
- Any uncovered tuition and fees must be paid to the institution as per that school's procedures and deadlines.
- For Tuition Exchange there is a \$35 participation fee per student per year, payable to Creighton by the employee at the beginning of each academic year.

FACHEX and Tuition Exchange Programs

Offer of Scholarship

- Families will learn of their FACHEX or Tuition Exchange scholarship offer generally no earlier than February and more commonly between March and April.
- Notification of offer will come from the offering institution, not Creighton.

FACHEX and Tuition Exchange Programs

Acceptance of Scholarship

- A notification to the offering institution of acceptance of the scholarship will be required.
- Requirements and conditions of each scholarship program vary between institutions and need to be verified with the offering institution.

FACHEX and Tuition Exchange Programs

Acceptance and Continuation of Scholarship

- Because families will learn of their FACHEX or Tuition Exchange scholarship offers from the other institutions, the employee needs to inform the Registrar's Office of the student's scholarship acceptance.
- Each year a Renewal Application will be required and due to the Registrar's Office by December 1.