

Head & Neck Cancer: Detection, Treatment & Management



KEYNOTE ADDRESS:
Mark Lingen, DDS, PhD

FRIDAY, OCTOBER 5, 2012

**Omaha Marriott Regency
10220 Regency Circle
Omaha, Nebraska**

DESIGNED FOR:

- Dentists
- Physicians
- Physician Assistants
- Nurse Practitioners
- Nurses
- Hygienists

Creighton
UNIVERSITY

**Health Sciences
Continuing Education**

SPONSORED BY:

**Creighton University Health Sciences
Continuing Education Consortium
Schools of Dentistry, Medicine, Nursing
and Pharmacy**

Memorial:

FRANCIS 'CORK' CAVLOVIC, DDS



This program is dedicated to the memory of Dr. Francis 'Cork' Cavlovic. Cork has been involved in oral health care for over forty years. His devotion to his family, his patients, his profession and his colleagues was indisputable. Cork served as a mentor for many young professionals throughout his professional career. Cork always had a clarity of his purpose here on this earth. He willingly shared his kindness and bestowed encouragement on all he encountered. His integrity in, and love for health care was a great motivator.

Cork got his first start with the recognition of his talents his senior year in high school when he won national honors in junior achievement for his proposed business project. He continued his association for many years after as an advisor and supporter on the national scene. This is quite notable for such a young man.

Cork was the dedicated father of one son and a daughter. He was the proud patron of a family with eight grandsons! His dedication to the children and his wife Linda has been evident at every encounter. Cork started early in his career with his involvement with organized Dentistry and rose quickly until he was forced to step aside due to a kidney transplant. And after a fight for health and wellness that he nearly lost, he came back to continue to foster his profession through leadership in the Pierre Fauchard Academy.

Late last year, Cork complained of 'ulcers' on the floor of his mouth. Much to the great chagrin of all of us in dentistry, Cork was diagnosed with Oral cancer. As we will outline today in our comprehensive review, Cork started down the familiar path to seek remission from cancer and the recovery of his life. He passed through surgery with trials but triumph, and succumbed during efforts to secure complete remission from the cancer.

If Cork were here today, he would be pressing you to keep looking, always keep asking, and never give up on that opportunity to secure more quality and quantity of life for your patients.

PURPOSE AND OBJECTIVES

Purpose: This program is intended to expose participants to the methods currently subscribed for the treatment of head and neck cancer. Additional presentations outline various modalities used in the examination and recognition of malignant and premalignant head and neck lesions as well as supportive therapies used to return the patient to function following treatment. The etiologies of head and neck cancer are also reviewed to facilitate a participant's ability to focus screening on those individuals at higher risk for developing cancer in the head and neck region.

Objectives: At the end of this presentation the participant should be able to:

- Explain the importance of conducting a thorough head and neck exam with each patient
- Explain current views of the etiology of head and neck cancer to their patients
- Explain the overview of treatment regimens used to cure cancer to their patients
- Discuss with their patients the supportive therapies for cancer survivors
- Identify the presence of potential malignant and pre-malignant lesions
- Discern what treatment/testing is necessary to establish a need for referral/biopsy
- Identify what tests are needed for accurate evaluation and who to contact
- Identify resources to contact for follow up on suspicious findings
- Be proactive when interviewing patients about medical/cancer history and lifestyle activities
- Identify patterns of denial behavior to facilitate patient pursuit of treatment
- Develop supportive behaviors to encourage patients at risk
- Encourage patient's interest in the process to facilitate cooperation and compliance.

EDUCATION CREDIT

Nurses CE

The Creighton University Health Sciences Continuing Education designates this activity for 7.25 contact hours for nurses. Nurses should claim only credit commensurate with the extent of their participation in this activity.

Category 1 Statement

The Creighton University School of Medicine designates this live activity for a maximum of 7.25 *AMA PRA Category 1 Credit(s)*[™]. Physicians should claim only the credit commensurate with the extent of their participation in the activity.

Dental Continuing Education

Creighton University School of Dentistry is an approved CE provider by the states of Iowa, Kansas, Minnesota and South Dakota. This course meets the requirements for credit in Nebraska.

Creighton is an ADACERP Recognized Provider. ADA CERP is a service of the American Dental Association to assist dental professionals in identifying quality providers of continuing dental education. ADA CERP does not approve or endorse individual courses or instructors, nor does it imply acceptance of credit hours by boards of dentistry. Creighton University School of Dentistry designates this activity for 7.25 continuing education credits.

ACCREDITATION STATEMENT: In support of improving patient care, Creighton University Health Sciences Continuing Education is accredited by the American Nurses Credentialing Center (ANCC), the Accreditation Council for Pharmacy Education (ACPE), and the Accreditation Council for Continuing Medical Education (AC-CME) to provide continuing education for the healthcare team.

SCHEDULE

7:15 a.m.	Registration, Continental Breakfast & Visit Exhibitors
8 a.m.	Opening Remarks & Program Overview, Interactive Warm-up <i>Timothy McVaney, DDS, MS</i>
8:30 a.m.	Surgery Perspective <i>Thomas Dobleman, MD</i>
9:30 a.m.	Perspective Causes of Oral Head & Neck Cancer (Part I) <i>Mark Lingen, DDS, PhD</i>
10:30 a.m.	Break & Visit Exhibits
10:45 a.m.	Perspective Causes of Oral Head & Neck Cancer (Part II) <i>Mark Lingen, DDS, PhD</i>
11:30 a.m.	Break, Pick Up Box Lunch & Visit Exhibitors
11:50 a.m.	Head & Neck Prosthetic Reconstruction <i>Alvin Wee, DDS, MS, MPH</i>
12:30 p.m.	Chemo vs. Radiation (How to Manage Afterwards?) <i>Gamini Soori, MD, MBA</i>
1:30 p.m.	Break & Visit Exhibits
1:45 p.m.	Why to Ask Questions, When to Biopsy <i>Stephen Hess, DDS, MS</i>
2:45 p.m.	Screening/Diagnosis What to Look For <i>John Shaner, DMD</i>
3:15 p.m.	Panel Discussion
Moderator:	<i>Timothy McVaney, DDS, MS</i> <i>Mark Lingen, DDS, PhD</i> <i>James Biskup, MD</i> <i>Katie Ehlers, BSN, MSN</i> <i>Stacie (Spiehs) Gilroy, PA-C</i> <i>Alvin Wee, DDS, MS, MPH</i>
4:00 p.m.	Closing, Evaluation & Adjournment, Interactive Wrap-up

FACULTY

COURSE DIRECTOR

Timothy P. McVaney, DDS, MS
Associate Clinical Professor
Department of Oral and Maxillofacial Surgery
Creighton University School of Dentistry
Omaha, NE

FACULTY

James Biskup, MD
Board Certified in Anti Aging &
Regenerative Medicine
Certified Family Practitioner
Omaha, NE

Thomas Dobleman, MD
Director, Head & Neck Cancer Surgery
Director of Nasal and Sinus Surgery
Creighton University Medical Center
Omaha, NE

Katie Ehlers, BSN, MSN
Adult Nurse Practitioner
Nebraska Cancer Specialists,
Creighton University
Omaha, NE

Stacie (Spiehs) Gilroy, PA-C
Preceptor, PA students
University of Nebraska Medical Center
Omaha, NE

Stephen Hess, DDS, MS
Associate Professor
Department of General Dentistry
Creighton University School of Medicine
Omaha, NE

Mark Lingen, DDS, PhD
Professor of Pathology
University of Chicago Medicine
Chicago, IL

John Shaner, DMD
Associate Professor
Department of General Dentistry
Creighton University School of Dentistry
Omaha, NE

Gamini Soori, MD, MBA
Consultant Medical Oncology – Hematology
Nebraska Cancer Specialists
Omaha, NE

Alvin Wee, DDS, MS, MPH
Associate Professor
Department of Prosthodontics
Creighton University School of Dentistry
Omaha, NE

Planning Committee: Timothy P. McVaney,
DDS, MS; Jeff Klein, BSB; Sally C. O'Neill, PhD;
Cate Pogge, BA; Marletta J. McKercher, BS

HSCE Program Review Committee: Mark
Malesker, PharmD; Philip Brauer, PhD; Scott
DiLorenzo, BA, DDS; Lesa Grovas, MN, APRN-
NP; Dennis Higginbotham, DDS, MD; Linda
Lazure, PhD, RN; Sally C. O'Neill, PhD; Amy Pick,
PharmD

REGISTRATION

**PLEASE REGISTER BY
FRIDAY, SEPTEMBER 17, 2012**

Head and Neck Cancer: Detection, Treatment & Management Friday, October 5, 2012

Dentists, Physicians, Physician Assistants, Nurse Practitioners \$120 (after Sept. 17 \$135)
Nurses, Dental Hygienists \$70 (after Sept. 17 \$80)

Fee includes continental breakfast, lunch and breaks.

NEW HANDOUT OPTIONS: Please be advised that handout materials for this conference will not be included in the registration fee and be distributed as paper copies, but rather, made available online ahead of time (to the best extent possible). Participants can download and print the presentations prior to the conference, or follow along on their own laptop during the conference.

- A link will be sent by email a week prior to the Conference to download and print the handouts needed before the event.
- For those needing a traditional handout, they will be available by pre-order at a cost of \$12.00. Please pre-order your handout by Sept. 20, 2012. No additional handouts will be available to purchase the day of the conference.

Walk-Ins are welcome, however seating or conference materials cannot be guaranteed. If registration/handout fee is being paid by check in advance, please mail to Creighton University School of Dentistry, 2500 California Plaza, Omaha, NE 68178.

CANCELLATION: Refund less \$20.00 if canceling by Friday, September 28, 2012. No Refund after Friday, September 28, 2012.

DON'T MISS OUT – REGISTER ONLINE TODAY AT:
<http://Creighton.edu/dentalschool/continuingeducation/index.php>

REGISTRATION FORM

Name: _____
Last First MI

Credentials: DDS/DMD ____; MD ____; Physican Assistant ____; Nurse Practioner ____; Nurse ____;

Hygienist ____; Other, please explain _____

Phone: _____ Cell Phone: _____

Email: _____

Address: _____

City, State, Zip: _____

____ Handouts: I would like a printed set the day of the class: \$12

For Nursing Credit: License Number is Required AND State of Licensure _____

For Pharmacy Credit: MAPB eprofile Number and Birthday (MM/DD) is required _____

Is there specific information you would like to received at the conference? _____

____ Enclosed is a check made payable to Creighton University for \$ _____

____ I authorize a charge to my credit card for the total amount due: \$ _____

Visa MasterCard Discover

Card #: _____

Expiration Date: _____ Security Code (on reverse of card): _____

Card Billing Address (if different from above): _____

Mail registration forms to:

Marletta McKercher, Program Coordinator

Creighton University School of Dentistry, 2500 California Plaza, Omaha NE 68178

For additional info or to register, call toll free 1-888-273-6576 or 280-5054 fax: 402-280-5969

email: mmckerch@creighton.edu

FOR YOUR INFORMATION

MEETING PLACE: Omaha Marriott Regency, 10220 Regency Parkway, Omaha, NE. Telephone 402-399-9000.

EMERGENCY PHONE: (402) 399-9000. Identify the Creighton Cancer conference.

CLIMATE AND DRESS: Casual dress is encouraged for the entire meeting. **Temperature in meeting rooms can fluctuate.** Layered clothing is suggested.

A NOTE FOR THOSE WITH SPECIAL NEEDS: Creighton University School of Medicine wishes to ensure that no individual with special needs is excluded, denied services, segregated, or otherwise treated differently from other individuals because of the absence of auxiliary aids and services. If you are in need of auxiliary aids or services, please contact Health Sciences Continuing Education (HSCE) at 1-800-548-2633 or 402-280-1830.

COURTESY: For the concentration and comfort of our participants, we ask that all cell phones and pagers be silenced during sessions of the conference. Breaks are provided for your communication convenience. Thank you for your cooperation.

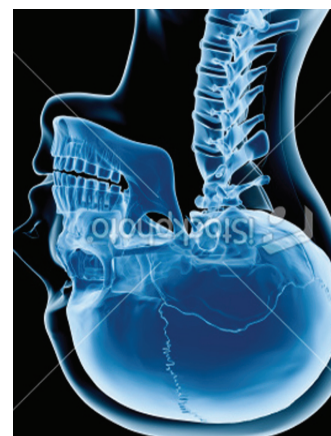
DISCLOSURE POLICY: It is the policy of Creighton University Health Sciences Continuing Education programs to ensure balance, independence, objectivity and scientific rigor in all its educational activities. All faculty participating in this activity are expected to disclose to the audience any significant financial interest or other relationship he/she has with the manufacturer(s) of any commercial product(s) discussed in an educational presentation

MONEY BACK GUARANTEE

We are convinced you'll leave our programs with more than enough information to earn back your investment in these programs many times over. But if you feel you haven't received your money's worth by the end of the program, you will receive a 100% refund of your registration.

In the unlikely event this program is cancelled, you will be notified by phone.

Head and Neck Cancer: Detection, Treatment & Management FRIDAY, OCTOBER 5, 2012



2500 California Plaza
Omaha, NE 68178-0216

Health Sciences
Continuing Education

Creighton
UNIVERSITY

Nonprofit Org
U.S. Postage
PAID
Omaha, NE
Permit No. 227