



Message from the Director

By Jim Bothmer, Assistant Vice President for Health Sciences and Director of the Health Sciences Library / Learning Resources Center

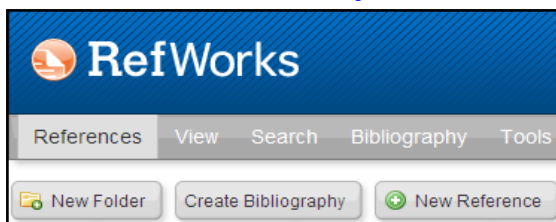
As I write this, the University is facing some difficult budgetary challenges that will affect the entire Creighton community. Specifically for the Health Sciences Library (and all three Creighton University libraries), there will be no increase in the materials budget for the coming fiscal year (2011/12). At the same time, the cost of electronic resources continues to escalate at **5-9%** a year. A disconnect clearly exists between these two facts. As the budget of our library stagnates – or even declines – while publishers' costs increase, the unfortunate result is that libraries will need to make judicious reductions in their collections.

We have done some preliminary and conservative projections of what no increase may mean to us. Conservatively we are facing a \$40,000 shortfall. With that in mind, in the coming months the Health Sciences Library will be evaluating its collection of e-resources to determine how we can best leverage our budget to effectively serve the information needs of our faculty, students, and staff. We will take into consideration usage patterns of materials, requests from faculty, and specific program and school needs. The library will continue to monitor and embrace the open access movement, taking advantage of an ever-increasing number of quality open access journals.

Difficult choices will have to be made. However, the staff of the Health Sciences Library pledges to do everything we can to preserve the integrity of our collection and to accommodate the information needs of you, our primary users.

If you have any questions please do not hesitate to contact me at jbothmer@creighton.edu or 402-280-5120.

RefWorks 2.0 Officially Released



RefWorks 2.0 has been officially released and will be implemented at Creighton over the course of this summer. Current RefWorks users will only need to log-in to this newest interface to access their RefWorks databases -- no backing up or transferring of data. All items in RefWorks Classic accounts will be available to users in **RefWorks 2.0**. Additionally, both RefWorks interfaces (RefWorks Classic and RefWorks 2.0) will be accessible to users through December 2011.

No features of RefWorks have been removed – the interface, however, has been reorganized to put more of the useful functions to the forefront. While the focus of the **RefWorks 2.0** release is the new user interface, RefWorks does plan a number of new feature releases for 2011. The new interface, however, is the initial step.

Watch the Health Sciences Library's website (hsl.creighton.edu) for additional information regarding **RefWorks 2.0**, including information on training sessions. Questions? Contact **John Mitchell**, Reference Librarian (280-4127 or jmitchell@creighton.edu) or **Reference Services** (280-5138, refdesk@creighton.edu, or IM cuhsirefdesk).

A New Look for Micromedex



All of the Micromedex resources are now available through the **Micromedex 2.0** interface. If you want to go to the old interface, click on the 1.0 tab at the top of the page. *The old interface will be retired June 1, 2011.* Online training for **Micromedex 2.0** is available in their training center (<http://healthcarescience.thomsonreuters.com/hcskit/>). If you have questions about **Micromedex 2.0**, contact the reference librarians at refdesk@creighton.edu or (402) 280 5138.

Summer Hours

June 17 - August 7

Monday - Thursday ... 7:00am - 10:00pm
Friday.....7:00am - 6:00pm
Saturday.....10:00am - 6:00pm
Sunday..... 1:00pm - 9:00pm

Memorial Day

Sunday, May 29.....10:00am-6:00pm
Monday, May 30.....CLOSED
Tuesday, May 31.....Resume Regular hours

Fourth of July

Monday July 4.....CLOSED
Tuesday, July 5.....Resume summer hours

ScienceDirect Freedom Collection

The Creighton University Health Sciences Library and Reinert-Alumni Library have jointly purchased the 2011 ScienceDirect Freedom Collection on a trial basis. For the rest of 2011, Creighton faculty, staff and students will have access to about 2000 journals, from 1995 to the present—almost everything published by Elsevier, covering subjects from accounting to zoology, with a few exceptions. As with other ScienceDirect titles, articles in these journals will be fully searchable and downloadable as PDFs or in HTML format. The journals in the Freedom Collection are listed in the CU Libraries' e-resources portal (A-to-Z list). Unlike our regularly subscribed titles, however, they will only be accessible in years when we buy access to the collection, with no perpetual license. At the end of 2011, we will assess the level of use of these added titles and the available budget to decide whether to purchase the 2012 collection.

Located in the Bio-Information Center (BIC), the Health Sciences Library / Learning Resources Center of Creighton University publishes the **BICInformer** three times a year.

Editor and Web Distribution: John Mitchell

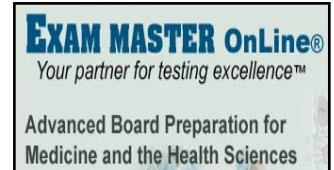
Lay-out, Design, and Distribution: Sue Chamberlin

Contributors: : Shawn Ammon, Judi Bergjord, Diana Boone, Jim Bothmer, Tim Glick, and Bryan Stack.

USMLE Step 1 Completely Updated and Revised in Exam Master

The Board Review for USMLE Step 1 in **Exam Master** has been newly updated and revised as of **April 1st** and offers the following:

- Over 450 new USMLE Step 1 questions
- Over 2300 questions with explanations
- Images and tables are associated with many questions
- More concise USMLE Step 1 content blueprint
- Many questions with references for supplemental learning
- Includes supplemental medical subjects for extra study
- Addition of flashcards for self-study and review
- More detailed scoring feedback and diagnosis
- More flexible exam creator
- Updated interface

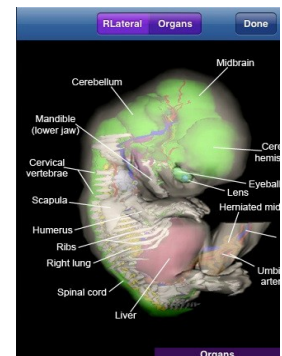


Access **Exam Master** from the Learning Resources Center / Multimedia page (<http://hsl.creighton.edu/lrcmultimedia>) of the Health Sciences Library website (hsl.creighton.edu). Login to **Exam Master** today and see the new changes for yourself.

New Embryo App from National Library of Medicine

The National Library of Medicine (NLM) has released **Embryo** (<http://itunes.apple.com/app/embryo/id422337604>), a new app for the iPhone, iPod Touch and the iPad. Features include human fertilization videos, photo micrographs of early-stage embryo development, 2D and 3D digital images using visual stack dissections, and a pregnancy calculator.

Embryo is a collaboration of NLM, the Eunice Kennedy Shriver National Institute of Child Health & Human Development (NICHD), the Virtual Human Embryo Project (Louisiana State University) and the National Museum of Health & Medicine's Human Developmental Anatomy Center.





SimMan: Advanced Patient Simulator Collaborative Effort Among Health Sciences Library, School of Medicine, & School of Nursing

SimMan is a portable and advanced patient simulator for team training with realistic anatomy and clinical functionality. **SimMan** will be able to provide simulation-based education to challenge and test students' clinical and decision-making skills during realistic patient care scenarios including emergency treatment of patients. It is a multi-function trainer capable of providing highly realistic patient simulation training experiences for the practice of teamwork, leadership and communication skills to a wide range of health care professionals encompassing all areas of patient care.

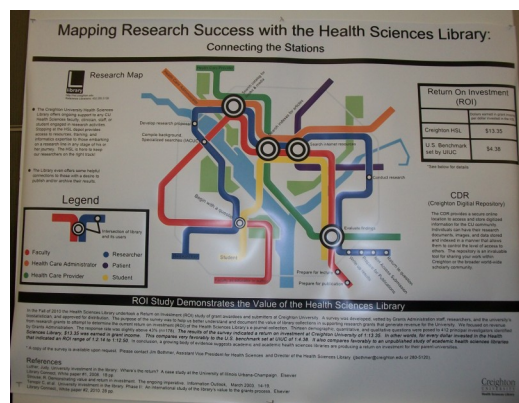
Specific skills that can be practiced on the **SimMan** include accurate simulation of all relevant difficult airway management scenarios, realistic practice of chest tube insertion, needle and surgical cricothyrotomy, and realistic fiberoptic bronchoscopy. The simulated patient monitor can provide snap shots of x-ray, 12-lead ECG and trends. Feedback for the students is generated automatically by the SimMan software and can provide immediate, detailed feedback on performance.

The Health Sciences Library teamed with the Schools of Medicine and Nursing to purchase **SimMan**. The simulator will be located in the Clinical Assessment Center at Creighton University Medical Center (until the clinical assessment center becomes a reality). Contact **Dr. Eric Peters** (ericpeters@creighton.edu) or **Jan Stawniak** (janetstawniak@creighton.edu) to schedule a demonstration or actual use of **SimMan**.

(Photo above courtesy of Laerdal Medical Corporation)

Mapping Research Success with the Health Sciences Library

At the St. Albert's Research Event held at the Harper Center in April, **Greg Hollins** (Library Specialist), **Jeanne Burke** (Education Coordinator), and **Judi Bergjord** (Outreach Librarian) presented a poster, **Mapping Research Success with the Health Sciences Library: Connecting the Stations**. The poster illustrated how the different members of the Creighton community interact with the Health Sciences Library in the many phases of the research process. The poster also highlighted the results of a "return on investment" (ROI) study conducted by the Health Sciences Library in the Fall of 2010. The study indicated that for every dollar invested in the HSL, **\$13.35** was earned in grant income. This compares quite favorably with the U.S. benchmark of **\$4.38** earned in grant income for every dollar invested in libraries. [For further information on the ROI study, see the January 2011 issue (Volume 141) of the BICInformer (<http://hsl.creighton.edu/aboutus/bicinformer>) or contact Jim Bothmer (jbothmer@creighton.edu).]



National Student Employment Week (April 10th – 16th)

The hard work and dedication of our student employees is invaluable to the continued success of the Health Sciences Library/Learning Resources Center. Responsible for a wide variety of duties – such as assisting with opening and closing procedures of the library, aiding with the staffing of our Service Desk, helping to maintain our computer assets and print collection – our student employees are an integral part of the HSL/LRC operation.

In honor of National Student Employment Week (celebrated April 10th to 16th), we invite you to join us in acknowledging and thanking our student employees for the previous academic year: **Prajakta Sanjay Gadgil; Heidi E. Hendrick; Hillary P. Miller; Megan R. O'Neill; Dhvani M. Patel; Clyde A. Redger; Jorge Rojas-Ruiz; Michael R. Visenio; Michaela M. Cantral; Jamal M. Jamil; Pinal Mistry; Pratyush S. Suryavanshi; Nia K. Jarrett; Chae Y. Kim; Meiling L. Leung; Manas Gupta; and Jian Lei Cai.**

BICInformer

Creighton University
 Health Sciences Library
 2500 California Plaza
 Omaha NE 68178-0210

Hours of Operation

Health Sciences Library/LRC

Sunday	10:00 am– Midnight
Monday–Thursday	7:00 am– Midnight
Friday	7:00 am– 10:00 pm
Saturday	10:00 am– 6:00 pm

Drug Information & Evidence Based Practice

Monday–Friday	8:00 am– 5:00 pm
---------------	------------------

Creighton Creative Services

Monday–Friday	8:00 am– 5:00 pm
---------------	------------------

Points of Contact

Director **A. James Bothmer**
jbothmer@creighton.edu

Telephone:	
Administration	402/280-5135
Circulation	402/280-5109
Interlibrary Loan	402/280-5144
Learning Resources Center	402/280-5132
Reference	402/280-5138
Serials (Journals)	402/280-5137
Technical Services	402/280-5102
Fax	402/280-5134

Web: <http://www.hsl.creighton.edu>

Drug Information & Evidence Based Practice

Telephone: 402/280-5100, 280-5101
 Web: <http://druginfo.creighton.edu>

Creighton Creative Services

Telephone: 402/280-5140
 Web: <http://www.creighton.edu/creativeservices>