

Table of Contents

Calendar and Deadlines2
Frequently Asked Questions3
Office Hours4
Tuition and Fees5
 Withdrawals and Refunds5
 Tuition Rates for Teachers and
 School Administrators5
 Financial Aid5
 Summer Admission6
 Christian Spirituality Program7
 Institute for Priestly Formation8
 Course Loads8
 Auditing a Class8
Courses by Session9
 May Session Courses9
 Online Courses9
 Accelerated Courses9
 Term 1 Courses10
 Term 2 Courses11
Credit Offerings12
 Accounting12
 American Studies12
 Anthropology12
 Art12
 Atmospheric Sciences12
 Biology13
 Black Studies13
 Business13
 Chemistry13
 Chinese14
 Christian Spirituality15
 Classical Civilizations14
 Communication Studies14
 Counseling14
 Economics16
 Education16
 Emergency Medical Services16
 English17
 Environmental Science17
 Exercise Science18
 Finance18
 Greek18
 History18
 Information Technology
 Management19
 Institute for Priestly Formation19
 International Relations20
 Journalism and
 Mass Communication20

Latin20
Management21
Management Information Services ..21
Marketing21
Master of Business Administration ..21
Mathematics22
Military Science21
Ministry20
Music22
Native American Studies22
Negotiation & Dispute Resolution ..22
Nursing23
Philosophy23
Physics24
Political Science24
Psychology24
Russian25
Security Analysis and Portfolio
 Management21
Senior Perspective25
Social Work25
Sociology25
Spanish25
Theology26
Theatre26
Women's and Gender Studies26
Summer Travel Courses 27-30
Independent Study Program31
Ad Astra and Arete Programs32

CAMPUS PHONE NUMBERS

Department..... (402) 280-ext.
Admissions (undergraduate).....2703
Business Office2707
Card Services Office4700
Career Services2722
College of Arts and Sciences3990
College of Business2850
Financial Aid2731
Graduate School2870
 Graduate Business2829
Health Sciences Library5108
Housing Office3016
International Programs2221
Kiewit Fitness Center2848
Mail Services2789
Pharmacy and Health
 Professions1828
Public Safety2104
Registrar2702
 Fax(402) 280-2527
Reinert/ Alumni Library2705
School of Nursing2004
St. John's Church3030
Student Activities1715
Student Health Services2735
Student Support Services2749
University College and
 Summer Sessions2843 or 2424
 Toll Free(800) 637-4279
 Fax(402) 280-2423

**SUMMER SESSIONS REGISTRATION
BEGINS
MARCH 25, 2009**

Calendar and Deadlines

Summer Sessions Terms	Last Day to Register and Change Courses	Last Day to Audit or Apply for Pass/No Pass Status	Last Day to Withdraw	Holiday observed (no classes)	Final Exams
MAY SESSION May 18-June 5	May 19	May 22	May 22	May 25	June 5
TERM 1 (3 week) June 8-June 26	June 11	June 15	June 22	n/a	June 26
TERM 1 (5 week) June 8-July 10	June 11	June 15	June 29	July 4	July 10
TERM 2 (3 week) July 13- July 31	July 16	July 20	July 27	n/a	July 31
TERM 2 (5 week) July 13-August 13	July 16	July 20	August 3	n/a	August 13
TERM 1 BUSINESS (M&W) May 18-June 24 (Tu&Th) May 19 -June 23	M&W May 20 Tu&Th May 21	n/a	M&W June 8 Tu&Th June 9	May 25	M&W June 24 Tu&Th June 23
TERM 2 BUSINESS (M&W) July 6 -August 10 (Tu&Th) July 7 -August 11	M&W July 8 Tu&Th July 9	n/a	M&W July 27 Tu&Th July 28	July 4	M&W Aug. 10 Tu&Th Aug. 11
CHRISTIAN SPIRITUALITY Term 1: June 8 -July 2 Term 2: July 6-July 30	June 10 July 8	n/a	June 15 July 13	July 4	n/a
INSTITUTE FOR PRIESTLY FORMATION Pre-Session: May 25 -June 5 Term 1: June 8 -July 2 Term 2: July 6-July 30	n/a June 8 July 6	n/a	n/a June 15 July 13	July 4	n/a

MAY 2009							JUNE 2009						
S	M	T	W	T	F	S	S	M	T	W	T	F	S
					1	2		1	2	3	4	5	6
3	4	5	6	7	8	9	7	8	9	10	11	12	13
10	11	12	13	14	15	16	14	15	16	17	18	19	20
17	18	19	20	21	22	23	21	22	23	24	25	26	27
24	25	26	27	28	29	30	28	29	30				
31													
JULY 2009							AUGUST 2009						
S	M	T	W	T	F	S	S	M	T	W	T	F	S
			1	2	3	4							1
5	6	7	8	9	10	11	2	3	4	5	6	7	8
12	13	14	15	16	17	18	9	10	11	12	13	14	15
19	20	21	22	23	24	25	16	17	18	19	20	21	22
26	27	28	29	30	31		23	24	25	26	27	28	29
							30	31					

Student FAQs

1. Who can attend Summer Sessions?

Anyone in good academic standing may enroll in Summer Sessions. Creighton students, interested adults, senior citizens, high school students (with documented academic ability for university classes), and students from other colleges and universities are welcome.

2. Do I have to be accepted for admission to attend Summer Sessions?

No formal application process is required to take summer classes unless you are interested in obtaining student financial aid. Students applying for financial aid must apply for admission and be accepted as a degree or certificate-seeking student.

3. Where to go to register?

Current CU student: In order to register, you will need to first obtain your registration PIN from your Advisor. Once you have your PIN, you may then register online <https://thenest.creighton.edu>

Visiting student - 3 ways to register:

1. Complete the form in the Summer Sessions Bulletin and mail it in.
2. Call University College 280-2424 or (800) 637-4279.
3. Make a personal visit to the office of Summer Sessions, University College, Eppley Bldg, B-11.

4. How do I obtain my Net ID and Blue Password?

Every Creighton and visiting student is assigned a NetID and a default BLUE password. You will find your Net ID on your Creighton Student ID Card. Both your Net ID & BLUE password are necessary to access your Creighton email, register for classes, view grades, add or drop classes, pay tuition, and obtain information about campus resources.

The first time you need to use your BLUE password, type "doit" followed by the "@" symbol and the last 4-digits of your Social Security Number, (e.g. doit@1234). Please change your default password as soon as possible.

Changing your BLUE password:

Open browser and type the following URL - <https://ami.creighton.edu>
Click "Login", type your NetID and BLUE password
Click "Change BLUE password" and follow the instructions on the screen

Note: Your BLUE password automatically expires at 180-day intervals. Change password within two weeks of receiving email notification. A reset is necessary after the password expires.

Forgot Your Password or expired?

Go to <https://ami.creighton.edu>
Click "Reset BLUE password"
Enter your NetID and your ISO number (at the back of your ID card)
Call the DoIT Service Desk 280-1111 if you don't have your ID card or ISO number.

5. How do I obtain my student ID card?

Harper Center, Card Services, Room 1095 - Mon - Fri 8 am - 4:30 pm Website: www.creighton.edu/CardServices

6. How do I access my Creighton email?

Your email address is your NetID followed by "@creighton.edu", e.g. bbj1234@creighton.edu.
Go to <http://cumail.creighton.edu>, enter your NetID/BLUE password. All official email is sent to cumail accounts.
For more information about your Creighton email account, visit: www.creighton.edu/doit/cumail.

7. The course I want to take requires a prerequisite; do I have to have it?

Yes. You may not elect to take a course without the proper prerequisites. If you have questions about prerequisites, contact the department where the course is taught before you register. In some cases, an equivalent prerequisite may be accepted or you may register with instructor permission.



Student FAQs



8. Can I still register after classes begin?

Check the calendar and deadlines chart on Page 2 of this Bulletin. Contact the Registrar's Office for late registration.

9. How do I pay my bill?

Students registering for Summer Sessions should review their student account on NEST. Students will be able to view all transactions as they occur. Student account billing is available only online. Paper statements are no longer mailed. Payment will be due by the first day of classes for each term. Failure to pay tuition and fees by the appropriate dates will result in the assessment of a fee for late payment of tuition. You may make payments online, in person at the Business Office, Room 113, Creighton Hall or by mail. The mailing address is Creighton University, Business Office, 2500 California Plaza, Omaha, NE 68178. Paying electronically is the preferred bill payment method, but it is optional.

10. Can I apply for financial assistance?

Yes. You must be accepted as a degree or certificate-seeking student at Creighton to receive federal financial assistance. Contact Student Financial Aid at (402) 280-2731 for more information.

11. Are there out-of-state fees?

No. Creighton University is a private institution.

12. Is parking available on campus?

Yes. You must obtain a parking permit from Public Safety located at 22nd and Burt Streets. The summer rate is \$5.00 per week. Evening parking is free but requires a permit.

13. I am a student from a foreign country and wish to take summer classes at Creighton. What kind of visa and additional paperwork will be required.

If you are coming to Creighton from another U.S. school, a copy of your I-20 will be required. If you are coming directly from a foreign country, you must first apply and be accepted for admission as a degree or certificate-seeking student. In all cases, contact the International Programs office at (402) 280-2221 for advice and information.

14. Are my Creighton courses transferable?

In most cases, the answer is yes, but check with your home campus to be sure.

15. What are the Reinert/Alumni Memorial Library Summer Hours?

	<u>June 1 - June 30</u>	<u>July 1 - August 14</u>	<u>Phone Numbers:</u>
Mon – Thurs	7:30 am - 10:00 pm	7:30 am - 10:00 pm	Ref Desk: 280-2227
Friday	7:30 am - 4:45 pm	7:30 am - 4:45 pm	Circ / Reserves: 280-2260
Saturday	Closed	Closed	Interlibrary Loan: 280-2219
Sunday	1:00 pm - 5:00 pm	1:00 pm - 5:00 pm	

16. Is there Campus Dining?

On-campus students:

Brandeis Hall (Open 7 days a week)

Breakfast: 7:00 am - 8:00 am
Lunch: 11:00 am - 1:00 pm
Dinner: 4:30 pm - 6:00 pm

Becker Hall

11:00 am - 1:00 pm
4:30 pm - 6:00 pm

Jack & Ed's

Mon – Fri: 8:00 am - 8:00 pm
Sat – Sun: noon - 8:00 pm

Off-campus students (Skutt Student Center):

Wareham's Court

Mon – Fri: 10:30 a.m. - 8:30 p.m.
Sat & Sun: Closed

Jack & Ed's

Mon – Fri: 8:00 am - 8:00 pm
Sat – Sunday: noon - 8:00 pm

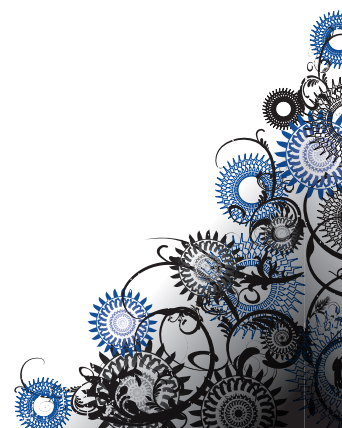
OFFICE HOURS

University College and Summer Sessions Office
Eppley Business Administration Bldg., Rm. B11
8:00 a.m.-4:30 p.m.

Graduate School Office
Creighton Hall, Room 235
8:00 a.m.-4:30 p.m.

Graduate Business Programs
Eppley Business Administration Bldg., Rm. 211
8:00 a.m.-4:30 p.m.

Registrar's Office
Creighton Hall, Room 226
8:30 a.m.-4:30 p.m.



Tuition and Fees

Tuition

Tuition and fees are payable at the time of registration (see Payment Options). Registration is not complete until financial arrangements have been made.

Summer Sessions 2009 tuition rates per semester hour:

<i>Undergraduate and Graduate courses</i>	\$564
<i>(except graduate business courses)</i>	
<i>Graduate Business courses</i>	\$625
<i>Undergraduate Nursing courses</i>	\$853
<i>(except Accelerated Nursing)</i>	
<i>Graduate Nursing courses</i>	\$625
<i>Eligible teachers*</i>	\$313
<i>Christian Spirituality</i> <i>and Institute for Priestly Formation courses</i>	
	\$332
<i>University College Accelerated Creighton</i>	\$317
<i>Auditing courses</i>	\$282

Fees

<i>University fee</i>	\$45
<i>Technology fee</i>	\$64
<i>Late payment fee per term</i>	\$133
<i>Laboratory fees for each course with lab:</i>	
<i>a. Applicable for courses with lab</i>	
	\$42 to a cap of \$84
<i>(ATE, ATS, BIO, CHM, EVS, EXS, PHY, PSY)</i>	
<i>b. College of Business Technology Fee</i> ..	
	\$20 to a cap of \$60
<i>Parking Permit</i>	\$5 per week

*See Page 6 for teacher discount and eligibility

Note: Transcripts, grade reports, and diplomas are released only when all outstanding balances have been paid.

Tuition Rates for Teachers and School Administrators

Teachers and school administrators who are employed full time in public or private elementary and secondary schools and persons who work on a consistent full- or part-time basis in specific church ministries may take summer courses at Creighton at a tuition discount. This discount does not apply to some course and/or programs. Students must complete an Application for Teacher Improvement Remission or Application for Ministry Remission verifying full-time employment status. These forms are available in the Business Office (phone: 280-2707) and in the University College and Summer Sessions Office (phone: 280-2843 or 280-2424).

Withdrawals and Refunds

Students withdrawing before the end of a term will be charged tuition and recurring fees on the basis of the period of attendance from date of enrollment as follows:

May Session/Term 1, 2 (3 week)

<i>Period of attendance</i> ¹	<i>Percent of rate to be charged</i>
One or two class days	10%
Three-five class days	40%
Six or seven class days	80%
Eight or more class days	100%

Other Summer Sessions ²

<i>Period of attendance</i> ¹	<i>Percent of rate to be charged</i>
One or two class days	10%
Three-seven class days	40%
Eight-12 class days	80%
Thirteen or more class days	100%

Non-recurring fees, the University fee, the University fee and penalty and special service fees will be charged in full regardless of the period of attendance.³

A student will be considered as having withdrawn from the University after two consecutive weeks of unexplained absence. However, this policy is not to be considered as revoking the regulation which requires a student to notify the Dean in person or writing of this withdrawal. Refunds are made to the student on the basis of the date he/she has formally notified the Dean in person or in writing of his/her withdrawal.

¹ Class day is any day of the term when any class is in session, regardless of whether or not a specific course is scheduled to be held on that day.

² Students withdrawing from Term 1B (six and one-half weeks) and Term 2B (six and one-half weeks) will be charged tuition and recurring fees as follows: during first week 10%, second week 40%, third week 80%, after third week 100%.

³ The non-recurring, penalty and special service fees include application, university fee, university tech fee, late payment, change of graduate program, graduate aptitude test, challenge examination, special examination/evaluation, recording, tuition remission administrative fee, orientation fee, locker, and thesis binding.

Financial Aid

University-funded grants and scholarships are generally not available for Summer Sessions. However, Pell Grants and student loans may be available to you.

If you need financial aid for the summer, you are encouraged to contact the Financial Aid Office for application material. Registration for six or more credit hours over all summer terms is required for minimum eligibility. Applicants must be degree- or certificate-seeking students. The Financial Aid Office is located in the Harper Center, 2nd floor. You may also reach the office by calling 280-2731 or e-mail at finaid@creighton.edu.

Summer Admission

All Summer Sessions courses are open to students already enrolled in or admitted to Creighton University either as degree candidates or special students.

Admission of Pre-College Students

High-school graduates or high-school students having completed their sophomore year are welcome to attend Summer Sessions courses for which they are qualified. These would include many of the initial courses in the traditional disciplines.

Credits earned at the University are applicable to Creighton University degrees and may be accepted at other institutions. Students already accepted into Creighton University may begin their freshman-year courses during the summer.

High-school graduates not presently enrolled in this University and who plan to attend only during the Summer Sessions and are not candidates for a degree from Creighton should complete and submit the Registration Form located in this Bulletin. High-school students need to register through the **Next Step Program**. For more information about the **Next Step Program** call (402) 280-2424.

Admission as a Regular Undergraduate Student

Those who are not yet enrolled in Creighton University but desire to begin their studies as regular students and enter at the Summer Sessions must make formal application for admission to the University. The regular application forms will be supplied by the Director of Admissions upon request. It is desirable that applications and transcripts be on file with the Admissions Office by May 1, 2009.

Those who plan to attend Summer Sessions only but anticipate receiving a degree from Creighton also must file the regular application for admission and see that official transcripts of their previous academic work completed elsewhere are submitted if this has not already been done.

All new students planning to enroll for the 2009 Summer Sessions must also complete and submit the Summer Sessions Registration Form included in this Bulletin (or obtained upon request from the Registrar).

Visiting Students

Students in good standing enrolled during the regular academic year in other universities or colleges are most welcome to attend the Summer Sessions at Creighton.

Simply complete and return the Summer Sessions Registration Form included in this Bulletin. This form should be filled out as early as possible in accordance with the accompanying instructions.

In the event a student wishes to apply the credit earned during the Summer Sessions at Creighton toward a degree to be conferred by some other institution, it will be the responsibility of the student to confer with his or her dean or adviser before coming to Creighton and select the courses which supplement or fulfill the requirements of his or her program. Written approval substantiating the selection should be obtained by the student from the proper authority and recorded in the student's records.

NOTE: The regular \$40.00 application for admission fee is not applicable for students not seeking a degree at Creighton University.

Admission to Graduate Courses

Anyone seeking to enter the Graduate School as a candidate for a degree must file the regular application for admission and see that official transcripts of previous academic work are submitted. Application forms will be supplied by the Graduate School upon request. Applications and credentials files should be completed by **May 1, 2009**.

Those who wish to pursue graduate study but are not candidates for a degree from Creighton may be admitted to the Graduate School as special students. A special application is required, and students should consult the course or program director concerning their readiness for the courses in which they wish to register.

Any new graduate student planning to enroll for the 2009 Summer Sessions must also complete and submit the Summer Sessions Registration Form included in this Bulletin (or obtained from the Registrar).

Admission of International Students

Creighton University welcomes international students from all corners of the world. Students who are not yet enrolled at Creighton University but wish to pursue a degree at Creighton must submit a formal application for admission to the University. To obtain an International Application for Undergraduate Students call (402) 280-2221 or send an e-mail to IntPrograms@creighton.edu.

International applicants who wish to enroll in Summer Programs must submit the following documents:

1. A completed Summer Sessions Registration Form.
2. Official high school transcripts:
The original and a certified English translation.
3. Official transcripts from each previous college or university attended:
The original and a certified English translation.
4. Applicants for whom English is not a native language must take the Test of English as a Foreign Language (TOEFL) and request that the score be sent to Creighton University (Code 6121). A minimum TOEFL score of 80 iBT (213 CBT / 550 PBT) is required. Applicants who do not meet the required TOEFL score may enroll in Creighton's Intensive English Language Institute (IELI).
5. Proof of financial support to cover all expenses associated with Summer School—tuition, fees, room, board, insurance and incidental expenses—must be provided by completing a Certification of Available Finances form and submitting bank statements.
6. **Health and Accident Insurance:** The University requires all international students to enroll in Creighton's international health and accident insurance plan. No waivers will be accepted.

For more information, students may call (402) 280-2221, access the website at www.creighton.edu/IntlPrograms, or send an e-mail to: IntlPrograms@creighton.edu.



Christian Spirituality

The degree of *Master of Arts with a major in Christian Spirituality* (M.A.) and the *Graduate Certificate in Spiritual Direction and Directed Retreats* is a summer program of graduate-level courses which combine solid academic content with personal appropriation of the content of Christian faith through prayer and worship and application of these to one's life and ministry.

The long-range goal of the program is to foster an apostolic spirituality which promotes the deep spiritual and theological renewal needed for Christians to respond appropriately to the many urgent issues facing humanity in the twenty-first century.

Since 1975 this program has helped to train spiritual directors and to qualify persons to give individually-directed retreats. For those who do not feel called to the ministry of spiritual direction and retreat-giving, the program offers courses for theological or spiritual enrichment.

Students may enroll either as degree, certificate or non-degree students. The degree requires 33 hours of course work, and an essay of 25-30 pages. A degree student can finish in three summers if 12 hours are taken each summer but one can also take up to six summers to complete the program.

All applicants should have a minimum of 12 credit hours in undergraduate theology, and they should share the spiritual goals of the program. All applicants must also provide three letters of reference from people who can comment on their life of faith and prayer. These letters should be mailed to the Graduate School in addition to all forms required by the Graduate School.

Those entering the degree and certificate program must apply to the Graduate School for admission. Non-degree and audit student must complete a special Graduate Student Form. Contact the Graduate School for all forms and directives.

CSP Course Requirements

Master of Arts With a Major in Christian Spirituality

Graduate Certificate in Spiritual Direction and Directed Retreats

Degree Program: Degree candidates must take one course in each of the following areas: Foundations (e.g., CSP 760 or 761); History (e.g., CSP 769 or 770); Prayer/Christian Growth (e.g., CSP 764, 765, or 766); Discernment (e.g., CSP 776); and Catholic Social Teaching or Social Justice (e.g., CSP 778 or 779).

Certificate Program: Those seeking a graduate certificate in Spiritual Direction and Directed Retreats must take: A course in prayer; (CSP 764, 765, or 766); Counseling (CSP 780); the Spiritual Exercises (CSP 773); Discernment (CSP 776); and both the Pre- and Post-Practicum (CSP 781 and 782).

A certificate will be awarded to those who successfully demonstrate the necessary skills in the practica courses and in a satisfactorily supervised practicum.

NOTE: The usual pre-requisites for admission to the Pre-Practicum class are:

- submission of the Application for Pre-Practicum class & approval of Practia Director.
- completion of at least one eight-day directed retreat
- current spiritual direction for at least two years
- completion of the required course-work

Those who successfully complete the Pre-Practicum requirements and receive Director permission will be approved for the Practicum. The actual Practicum is done in the academic year between the second and third summer of study. The Post-Practicum class is taken in the third summer after completion of the supervised Practicum.

CSP courses are offered for two four-week terms, beginning the second Monday of June each year. One can register for either term, or for both; one may not register for more than seven credit hours per term.

Institute for Priestly Formation

Professional Seminar for Seminary Spiritual Directors

Dates: June 5-June 26, 2009

Time: Monday-Friday, 8:00-10:10 a.m., Rm. A 332

Instructors: Fr. Joseph Kelly, D.Min., Fr. Vincent Fortunato, O.F.M.Cap.

The seminar opens the evening of Friday, June 9 with a weekend of directed prayer. In the three-week practicum, peer supervision is experienced as the participants become engaged in the art of giving and receiving spiritual direction. The opportunity to direct the prayer of two individuals outside of class is provided. Case studies tailored to the particular needs of seminary formation are discussed.

Discussion leaders for roundtable discussions with participants include: Fr. George Aschenbrenner, S.J., Sr. Maureen Conroy, R.S.M. and Fr. Richard Hauser, S.J.

For more information contact:

Rev. Richard J. Gabuzda, Executive Director, The Institute for Priestly Formation, Creighton University, (402) 546-6384 or (800) 637-4279 or ipf@creighton.edu

Registration

Auditing a Class

Students will be permitted to register as auditors only for exceptional reasons and with the explicit authorization of the Dean. Not all courses are open to auditors. Auditors are not held responsible for the work expected of regular students, are not admitted to examinations, and receive no grade or credit for the course. Regular attendance at class is expected, however, and auditors are subject, the same as regular students, to being dropped from the course for excessive absences (in this event auditors receive a W).

A student who has previously enrolled as an auditor may not take the course for credit during any succeeding semester or summer term except by special permission of the Dean.

Charges for courses audited are one-half (50 percent) of the Summer 2009 tuition rate. Special courses, workshops, and institutes offered at a special flat-tuition charge are excluded from the auditor discount.

Course Loads

Students may register in one, two, or three of the basic components of the Summer Sessions: the May Session, Term 1 (3 week), Term 1 (5 week) and Term 2 (3 week) and Term 2 (5 week). The student may earn three semester hours in any of the three-week sessions and up to six semester hours of graduate or undergraduate credit in each of the two five-week terms (seven semester hours if a laboratory course is taken). Graduate Business students may register for six credit hours during each of the two special sessions (Term 1B and Term 2B) designed for their programs.



Courses by Session

ONLINE:

40958 BKS 428 W	Multicultural Issues in Psychology	41002 MAM 676 W	Theology and Catechesis
40597 COU 635 WC	Diagnosis in Counseling	41003 MAM 761 W	Historical Develop Doctrine
40191 COU 670 WCA	Select Topics in Counseling	40135 MBA 775 WC	Business Policy Manager Action
40447 COU 670 WCB	Selected Topics In Counseling	40727 MSA 720 WA	Ethical Professional Standards
40448 COU 670 WCN	Selected Topics In Counseling	41115 MSA 720 WB	Ethical Professional Standards
40244 EDU 622 WC	Imp School-Community Relations	41114 MSA 732 W	Capital Markets
40216 ENG 121 W	World Literature II	40591 MSA 734 WC	Equity Analysis
40040 ENG 150 W	Rhetoric and Composition	40957 PSY 428 W	Multicultural Issues in Psychology
41136 HIS 103 W	The Asian World	40180 THL 201 W	Reading the Old Testament
40717 HIS 107 W	The Middle Eastern World	40627 THL 250 WA	Theological Foundations

UNIVERSITY COLLEGE - ACCELERATED CREIGHTON:

40012 COM 152 N	Principles of Comm Competence	May Session
40986 COM 202 N	Communication Theories	Term 1
40291 COM 380 N	History Criticism of Cinema	Term 2
40122 COM 440 N	Gender Communication	Term 1
41134 COM 478 N	Intersections of Working Life	May Session
40041 HIS 101 UCA	The Modern Western World	May Session
41135 SRP 478 N	Intersections of Working Life	May Session
40181 THL 250 UCA	Theological Foundations	Term 1
40632 THL 354 N	Intro to Judaism	Term 1

MAY SESSION: May 18-June 5, 2009

DAY:

40774 AMS 312 A	Mass Media And Modern Culture	40706 JMC 365 A	International Mass Communication
40964 ANT 324 A	Native American World View	40834 JMC 438 A	Media Ethics
40119 ART 211 A	Introductory Ceramics	40008 MIS 353 A	Management Information Systems
41011 BIO 481 A	Terrestrial Ecology	40048 MKT 319 A	Principles of Marketing
40028 BIO 571 A	Animal Behavior	40963 NAS 324 A	Native American World View
40024 BUS 201 A	Legal Environment Business	40186 NUR 224 WA	Health Assessment
40619 CHN 101 A	Beginning Chinese I	40190 NUR 253 W	Human Pathophysiology Lab
40738 CNE 120 B	World Literature I	40932 NUR 491 A	Spanish for Health Care
40440 COM 312 A	Mass Media and Modern Culture	40152 PHL 107 A	Crit and History Intro to Phil
40013 COM 314 A	Managerial Communication	40011 PHL 320 A	God & Persons: Phil Reflection
40036 ECO 203 A	Introductory Microeconomics	40962 PHL 324 A	Native American World View
41021 ECO 528 A	International Economic Development	40959 PLS 481 A	Poverty, Develop and Public Policy
40243 EDU 501 A	Psychology of Exceptional Children	40618 PSY 351 A	Abnormal Psychology
40803 EDU 543 A	Practicum In English Lang Learning	40126 PSY 471 A	Crisis Intervention
40002 ENG 121 A	World Literature II	41050 SOC 101 A	Self & Society
40003 ENG 150 A	Rhetoric and Composition	41051 SOC 321 A	Sociology Criminal Justice System
40773 ENG 312 A	Mass Media And Modern Culture	40983 SPN 102 A	Beginning Spanish II
41014 EVS 481 A	Terrestrial Ecology	40954 SRP 422 A	Children of Poverty
40070 EVS 571 A	Animal Behavior	40950 SRP 480 A	American Prisons
41019 EXS 125 A	First Aid	40960 SRP 481 A	Poverty, Develop and Public Policy
40010 EXS 125 B	First Aid	40955 SWK 422 A	Children of Poverty
40022 FIN 301 A	Managerial Finance	40702 THL 100 A	Christianity in Context
40717 HIS 107 W	The Middle Eastern World	40015 THL 209 A	The Synoptic Gospels
41118 INR 528 A	International Economic Development	40576 THL 344 A	Theology of Christian Marriage
40564 JMC 341 A	Public Relations Writing		

EVENING:

41030 ANT 108 N	The Native American World	40691 ENG 120 N	World Literature I
40995 ART 155 N	Welded Metal Sculpture I	40765 HIS 108 N	The Native American World
40012 COM 152 N	Principles of Comm Competence	41029 NAS 108 N	The Native American World
41134 COM 478 N	Intersections of Working Life	41117 NDR 615 N	Negotiation
40441 COM 495 N	Special Topics Comm Studies	41135 SRP 478 N	Intersections of Working Life

Courses by Session

TERM 1- 3 WEEK: June 8-June 26, 2009

DAY:

40027 ACC 201 A	Intro to Financial Accounting	40054 EXS 331 A	Human Anatomy
40442 ACC 313 A	External Fin Report Issues	40634 LAT 115 A	Intensive Beginning Latin
40698 ART 428 A	Film and the Fine Arts	40174 MGT 301 A	Mgr Proc and Organiz Behav
40095 BIO 211 A	Gen Biology: Molecular & Cellular	40172 MIL 205 A	ROTC Leadership Training Camp
40096 BIO 211 AA	Biology 211 Lab AA	40173 MIL 351 A	Leadership Development
41008 BIO 390 A	Environmental Science	40213 MIL 352 A	ROTC Nurse Summer Training
40593 BIO 401 A	Biometry	40701 MUS 273 A	Music Appreciation
40635 BUS 229 A	Statistical Analysis	40997 MUS 375 A	Music of the World's Peoples
40029 CHM 203 A	General Chemistry I	40056 PHY 107 A	Introductory Astronomy
40965 CHM 203 B	General Chemistry I	40057 PHY 211 A	General Physics I
40806 CHM 204 AA	General Chemistry Lab I	40261 PHY 211 LA	PHY 211 LAB LA
40966 CHM 204 BB	General Chemistry Lab I	41031 PHY 211 LB	PHY 211 LAB LB
40030 CHM 321 A	Organic Chemistry Lecture I	40262 PHY 211 LC	PHY 211 LAB LC
40967 CHM 321 B	Organic Chemistry I	40263 PHY 211 LD	PHY 211 LAB LD
40120 CHM 322 AA	Organic Chemistry Laboratory I	40264 PHY 211 LE	PHY 211 LAB LE
40968 CHM 322 BB	Organic Chemistry Laboratory I	40265 PHY 211 LF	PHY 211 LAB LF
41052 CNE 120 A	World Literature I	40671 PHY 211 LG	PHY 211 LAB LG
40121 COM 314 B	Managerial Communication	40956 PSY 344 A	Social Psychology
40451 ENG 120 A	World Literature I	40422 SPN 115 A	Intensive Beginning Spanish
40039 ENG 121 B	World Literature II	40699 SRP 428 A	Film and the Fine Arts
41055 ENG 453 A	Modern Poetry	40181 THL 250 UCA	Theological Foundations
41012 EVS 390 A	Environmental Science	40627 THL 250 WA	Theological Foundations
40594 EVS 401 A	Biometry	40998 THR 161 A	Theatre Appreciation
40053 EXS 142 A	Personal Weight Training	40124 WGS 440 N	Gender Communication

EVENING:

40961 PHL 250 N	Phil Fndtns Ethical	40632 THL 354 N	Intro to Judaism
-----------------	---------------------	-----------------	------------------

TERM 1- 5 WEEK: June 8-July 10, 2009

DAY:

40994 ART 105 A	Art Fundamentals	40040 ENG 150 W	Rhetoric and Composition
40620 CHN 102 A	Beginning Chinese II	40043 JMC 219 A	News Reporting
40444 COU 619 A	Counseling Diverse Population	40992 JMC 331 A	Editing
40597 COU 635 WC	Diagnosis in Counseling	40993 JMC 440 A	Media Research
40063 COU 642 A	Counseling in Elementary School	40838 JMC 529 A	Law of Mass Communication
40598 COU 646 A	Counseling in Secondary School	40952 PHL 420 A	Science and Religion
40446 COU 652 A	Community Mental Health	40059 PSY 111 A	Introductory Psychology
40162 ECO 205 A	Introductory Macroeconomics	40779 RUS 101 A	Beginning Russian I
41020 ECO 303 A	Intermediate Microeconomics	40703 SPN 201 A	Intermediate Spanish I
40204 EDU 510 A	Growth and Development of Child	40951 SRP 420 A	Science and Religion
40244 EDU 622 WC	Imp School-Community Relations	40628 THL 335 A	Jesus Christ: Yesterday & Today
40988 EDU 645 A	Living English: Language	40953 THL 420 A	Science and Religion
40038 EDU 692 A	Cultural Issues in Education		

EVENING:

40093 ATS 113 N	Intro to Atmospheric Sciences	40705 MTH 137 N	Trigonometry
41005 ATS 114 A	Intro Atmospheric Sciences Lab	40051 MTH 141 N	Applied Calculus
40986 COM 202 N	Communication Theories	40170 MTH 201 N	Applied Mathematics
40122 COM 440 N	Gender Communication	40584 MTH 245 N	Calculus I
40094 EVS 113 N	Intro to Atmospheric Sciences	40802 MTH 363 N	Elementary Probability Statistics
41006 EVS 114 A	Intro Atmospheric Sciences Lab	40259 PHY 108 LA	Astronomy Laboratory
40237 HIS 103 N	The Asian World	40058 PHY 211 N	General Physics I
40049 MTH 103 N	Intermediate Algebra	40124 WGS 440 N	Gender Communication
40050 MTH 135 N	College Algebra		

Courses by Session

TERM 2- 3 WEEK: July 13-July 31, 2009

DAY:

40153 ACC 202 A	Intro to Managerial Accounting	40719 GRK 115 A	Intensive Greek
40148 ACC 516 A	Spec Managerial Accounting Issues	40438 JMC 379 A	Print Design
40283 ACC 538 A	International Accounting	40235 JMC 382 A	Web Design
40081 ART 104 A	Elementary School Art	40132 PHL 250 A	Philosophical Foundations
40439 ART 379 A	Print Design	40428 PLS 313 A	Politics of The Middle East
40234 ART 382 A	Web Design	40957 PSY 428 W	Multicultural Issues in Psychology
40958 BKS 428 W	Multicultural Issues in Psychology	40982 SPN 201 B	Intermediate Spanish I
40216 ENG 121 W	World Literature II	40452 THL 201 A	Reading Old Testament
40742 ENG 470 A	Seminar in Film Studies	41025 THR 131 A	Acting I

EVENING:

41054 ENG 202 N	Entering Professional Dialogue	40055 PHL 320 N	God and Persons: Phil Reflect
40171 MTH 246 N	Calculus II		

TERM 2- 5 WEEK: July 13-August 13, 2009

DAY:

40449 BIO 212 A	General Biology	40175 EXS 142 B	Personal Weight Training
40450 BIO 212 AA	BIO 212 Lab AA	40021 EXS 320 A	Human Physiology
41010 BIO 449 A	Animal Physiology	40718 HIS 101 C	The Modern Western World
40154 CHM 205 A	General Chemistry II	40177 PHY 212 A	General Physics II
40969 CHM 205 B	General Chemistry II	40274 PHY 212 LA	PHY 212 LAB LA
40155 CHM 206 AA	Gen Chemistry Laboratory II	40275 PHY 212 LB	PHY 212 LAB LB
40970 CHM 206 BB	General Chemistry Lab II	40276 PHY 212 LC	PHY 212 LAB LC
40156 CHM 323 A	Organic Chemistry Lecture II	40277 PHY 212 LD	PHY 212 LAB LD
40971 CHM 323 B	Organic Chemistry Lecture II	40278 PHY 212 LE	PHY 212 LAB LE
40972 CHM 323 C	Organic Chemistry Lecture II	40279 PHY 212 LF	PHY 212 LAB LF
40236 CHM 324 AA	Organic Chemistry Lab II	40672 PHY 212 LG	PHY 212 LAB LG
40973 CHM 324 BB	Organic Chemistry Lab II	40981 SPN 115 B	Intensive Beginning Spanish
40974 CHM 324 CC	Organic Chemistry Lab II	40180 THL 201 W	Reading the Old Testament
41053 ENG 150 B	Rhetoric and Composition		

EVENING:

40292 ART 380 N	History & Criticism of Cinema	40606 HIS 395 N	Selected Topics
40291 COM 380 N	History & Criticism of Cinema	41121 INR 603 N	Proseminar American Diplomatic
40916 ENG 380 N	History & Criticism of Cinema	40178 PHY 212 N	General Physics II
40042 HIS 107 N	Middle Eastern World		

Faculty Spotlight: Donna Pawlowski, Ph.D.



Donna Pawlowski grew up in a family with six children on a farm in Northwestern Minnesota. Her B.S. Ed. and M.A. degrees are from the University of North Dakota and her Ph.D. is in Communication Studies from the University of Nebraska-Lincoln. In the fall of 1994, she began teaching in the Department of Communication Studies where she is currently an Associate Professor.

She enjoys teaching courses in Family Communication via service-learning, Interpersonal Communication, Health Communication, Gender Communication, and Managerial Communication, among others. Her areas of research include interpersonal and familial communication with an emphasis on health care and acute illnesses, metaphors and dialectics; as well as instructional communication and the pedagogical implications of service-learning. Aside from traditional scholarship, she also enjoys applied scholarship presenting workshops to various campus and community organizations, and participating as a faculty leader in Encounter Retreat weekends and working with students on various projects. She is actively involved in regional and national communication associations, in addition to the Midwest Consortium of Service-Learning for Higher Education.

Her hobbies include golf, reading and spending time with her husband, friends, and family which includes over 40 nieces and nephews.

CRN Subject Course Section Title Credit Days Begin End Instructor

ACCOUNTING

TERM 1-5 WEEK (JUNE 8-JULY 10, 2009)

40027	ACC	201	A	Intro to Financial Accounting	3	MTWRF	1100	1230	Lewis
40442	ACC	313	A	External Fin Report Issues	3	MTWRF	0915	1045	Lewis

TERM 2-3 WEEK (JULY 13- JULY 31, 2009)

40153	ACC	202	A	Intro to Manage Accounting	3	MTWRF	1100	1230	Shimerda
40214	ACC	366	A	Internships in Accounting	3	MTWRF	0730	0900	Flinn
40148	ACC	516	A	Spec Managerial Acc Issues	3	MTWRF	0915	1045	Shimerda
40283	ACC	538	A	International Accounting	3	MTWRF	1100	1230	Flinn

AMERICAN STUDIES

MAY SESSION (MAY 18-JUNE 5, 2009)

40774	AMS	312	A	Mass Media, Modern Culture	3	MTWRF	0900	1200	Hatfield
-------	-----	-----	---	----------------------------	---	-------	------	------	----------

ANTHROPOLOGY

MAY SESSION (MAY 18-JUNE 5, 2009)

41030	ANT	108	N	The Native American World	3	MTWRF	1800	2100	Leavelle
40964	ANT	324	A	Native American World View	3	MTWRF	0900	1200	Brown

ART

MAY SESSION (MAY 18-JUNE 5, 2009)

40995	ART	155	N	Welded Metal Sculpture I	3	MTWRF	1800	1950	Alston
40119	ART	211	A	Introductory Ceramics	3	MTWRF	1300	1600	TBD

TERM 1-3 WEEK (JUNE 8-JUNE 26, 2009)

40994	ART	105	A	Art Fundamentals	3	MTWRF	0900	1200	Schroder
-------	-----	-----	---	------------------	---	-------	------	------	----------

TERM 1-5 WEEK (JUNE 8-JULY 10, 2009)

40698	ART	428	A	Film and the Fine Arts	3	MTWRF	0915	1045	Hough
-------	-----	-----	---	------------------------	---	-------	------	------	-------

TERM 2-3 WEEK (JULY 13- JULY 31, 2009)

40081	ART	104	A	Elementary School Art	3	MTWRF	1300	1600	Smith
-------	-----	-----	---	-----------------------	---	-------	------	------	-------

TERM 2- 5 WEEK (JULY 13-AUGUST 13, 2009)

40292	ART	380	N	History & Criticism of Cinema	3	MW	1800	2200	Birkholt
-------	-----	-----	---	-------------------------------	---	----	------	------	----------

TERM 2-3 WEEK (JULY 20- AUGUST 7, 2009)

40439	ART	379	A	Print Design	3	MTWRF	1300	1600	Davies
40234	ART	382	A	Web Design	3	MTWRF	0900	1200	Davies

ATMOSPHERIC SCIENCES

TERM 1-5 WEEK (JUNE 8-JULY 10, 2009)

40093	ATS	113	N	Intro to Atmospheric Sciences	3	MWR	1800	2040	Ritz
41005	ATS	114	A	Intro Lab Atmospheric Science	1	WR	1530	1645	Ludwig

CRN	Subject	Course	Section	Title	Credit	Days	Begin	End	Instructor
-----	---------	--------	---------	-------	--------	------	-------	-----	------------

BIOLOGY

MAY SESSION (MAY 18-JUNE 5, 2009)

41011	BIO	481	A	Terrestrial Ecology	4	MTWRF	0900	1200	Vinton
						MTWRF	1300	1600	Vinton
40028	BIO	571	A	Animal Behavior	3	MTWRF	0900	1200	Burk

TERM 1-5 WEEK (JUNE 8-JULY 10, 2009)

40095	BIO	211	A	Gen Bio: Molecular & Cellular	4	MTWRF	1100	1230	Reedy
40096	BIO	211	AA	Bio 211 Lab AA	0	MTWRF	0915	1045	Austerberry
41008	BIO	390	A	Environmental Science	3	MTWRF	1315	1545	Kenning
40593	BIO	401	A	Biostatistics	4	MWF	0900	1300	Cullum

TERM 2-5 WEEK (JULY 13-AUGUST 13, 2009)

40449	BIO	212	A	Gen Bio: Orgnsml&Population	4	MTWRF	1100	1230	Burk
40450	BIO	212	AA	BIO 212 Lab AA	0	MTWRF	0915	1045	Burk

BLACK STUDIES

TERM 2 (JULY 13-JULY 31, 2009)

40958	BKS	428	W	Multicultural Issues in Psy	3	Online			Budesheim
-------	-----	-----	---	-----------------------------	---	--------	--	--	-----------

BUSINESS

MAY SESSION (MAY 18-JUNE 5, 2009)

40024	BUS	201	A	Legal Environment Business	3	MTWRF	0900	1200	McNary
-------	-----	-----	---	----------------------------	---	-------	------	------	--------

TERM 1-5 WEEK (JUNE 8-JULY 10, 2009)

40635	BUS	229	A	Statistical Analysis	4	MTWR	0900	1200	Duckworth
40202	BUS	366	A	Business Internships	3	MTWRF	1100	1230	Wells

CHEMISTRY

TERM 1-5 WEEK (JUNE 8-JULY 10, 2009)

40029	CHM	203	A	General Chemistry I	3	MTWRF	0730	0900	Anderson
40965	CHM	203	B	General Chemistry I	3	MTWRF	0915	1045	Harris
40806	CHM	204	AA	General Chemistry Lab I	1	MWF	1130	1420	Doyle
40966	CHM	204	BB	General Chemistry Lab I	1	MWF	1130	1420	Doyle
40030	CHM	321	A	Organic Chemistry Lecture I	3	MTWRF	0915	1045	Fletcher
40967	CHM	321	B	Organic Chemistry I	3	MTWRF	0915	1045	Gross
40120	CHM	322	AA	Organic Chemistry Lab I	1	TR	1130	1420	Ali
40968	CHM	322	BB	Organic Chemistry Lab I	1	TR	1130	1420	Ali

TERM 2 (JULY 13-AUGUST 13, 2009)

40154	CHM	205	A	General Chemistry II	3	MTWRF	0730	0900	Snipp
40969	CHM	205	B	General Chemistry II	3	MTWRF	0915	1045	Freitag
40155	CHM	206	AA	Gen Chemistry Laboratory II	1	MWF	1130	1420	Snipp
40970	CHM	206	BB	Gen Chemistry Laboratory II	1	MWF	1130	1420	Snipp
40156	CHM	323	A	Organic Chemistry Lecture II	3	MTWRF	0730	0900	Ali
40971	CHM	323	B	Organic Chemistry Lecture II	3	MTWRF	0915	1045	Miller
40972	CHM	323	C	Organic Chemistry Lecture II	3	MTWRF	0915	1045	Miller
40236	CHM	324	AA	Organic Chemistry Lab II	1	TR	1130	1420	Ali
40973	CHM	324	BB	Organic Chemistry Lab II	1	TR	1130	1420	Ali
40974	CHM	324	CC	Organic Chemistry Lab II	1	WF	1130	1420	Ali



CRN	Subject	Course	Section	Title	Credit	Days	Begin	End	Instructor
-----	---------	--------	---------	-------	--------	------	-------	-----	------------

CHINESE

MAY SESSION (MAY 18-JUNE 5, 2009)

40619	CHN	101	A	Beginning Chinese I	3	MTWR	1600	1945	Jiang
-------	-----	-----	---	---------------------	---	------	------	------	-------

TERM 1-3 WEEK (JUNE 8-JUNE 26, 2009)

40620	CHN	102	A	Beginning Chinese II	3	MTWRF	1300	1600	Jiang
-------	-----	-----	---	----------------------	---	-------	------	------	-------

CLASSICAL CIVILIZATIONS

MAY SESSION (MAY 18-JUNE 5, 2009)

40738	CNE	120	B	World Literature I	3	MTWRF	0900	1215	Habash
-------	-----	-----	---	--------------------	---	-------	------	------	--------

TERM 1-5 WEEK (JUNE 8-JULY 10, 2009)

41052	CNE	120	A	World Literature I	3	MTWRF	0915	1045	Churchill
-------	-----	-----	---	--------------------	---	-------	------	------	-----------

COMMUNICATION STUDIES

MAY SESSION (MAY 12-JUNE 4, 2009)

40012	COM	152	A	Principles of Communication	3	TR	1745	2145	Birkholt
-------	-----	-----	---	-----------------------------	---	----	------	------	----------

41134	COM	478	N	Intersections of Working Life	3	TR	1745	2145	Kirby
-------	-----	-----	---	-------------------------------	---	----	------	------	-------

MAY SESSION (MAY 18-JUNE 5, 2009)

40440	COM	312	A	Mass Media, Modern Culture	3	MTWRF	0900	1200	Hatfield
-------	-----	-----	---	----------------------------	---	-------	------	------	----------

40013	COM	314	A	Managerial Communication	3	MTWRF	0900	1200	Pawlowski
-------	-----	-----	---	--------------------------	---	-------	------	------	-----------

TERM 1-5 WEEK (JUNE 8-JULY 10, 2009)

40986	COM	202	N	Communication Theories	3	TR	1800	2200	Keimig
-------	-----	-----	---	------------------------	---	----	------	------	--------

40121	COM	314	B	Managerial Communication	3	MTWR	0845	1045	McBride
-------	-----	-----	---	--------------------------	---	------	------	------	---------

40122	COM	440	N	Gender Communication	3	MW	1800	2200	McBride
-------	-----	-----	---	----------------------	---	----	------	------	---------

TERM 2 (JULY 13-AUGUST 13, 2009)

40291	COM	380	N	History & Criticism of Cinema	3	MW	1800	2200	Birkholt
-------	-----	-----	---	-------------------------------	---	----	------	------	----------

COUNSELING

TERM 1-3 WEEK (JUNE 8-JUNE 26, 2009)

40444	COU	619	N	Counseling Diverse Population	3	MTWRF	1300	1600	Smith
-------	-----	-----	---	-------------------------------	---	-------	------	------	-------

40597	COU	635	WC	Diagnosis in Counseling	3	MTWRF	0900	1200	Smith
-------	-----	-----	----	-------------------------	---	-------	------	------	-------

40063	COU	642	A	Counseling in Elementary Sch	3	MTWRF	0900	1200	Ponac
-------	-----	-----	---	------------------------------	---	-------	------	------	-------

40598	COU	646	A	Counseling Secondary School	3	MTWRF	0900	1200	Muskin
-------	-----	-----	---	-----------------------------	---	-------	------	------	--------

40446	COU	652	A	Community Mental Health	3	MTWRF	0900	1200	Dickel
-------	-----	-----	---	-------------------------	---	-------	------	------	--------

TERM 2 (JULY 6-JULY 24, 2009)

40694	COU	611	A	Theory and Assessment	3				Rossi
-------	-----	-----	---	-----------------------	---	--	--	--	-------

40445	COU	650	A	Foundations and Functions	3	MTWRF			Young
-------	-----	-----	---	---------------------------	---	-------	--	--	-------

TERM 2 (JULY 6-JULY 11, 2009)

40191	COU	670	WCA	Selected Topics in Counseling	1	MTWRF	0900	1200	Butler
-------	-----	-----	-----	-------------------------------	---	-------	------	------	--------

40447	COU	670	WCB	Selected Topics in Counseling	1	MTWRF	1300	1600	Smith
-------	-----	-----	-----	-------------------------------	---	-------	------	------	-------

40448	COU	670	WCN	Selected Topics in Counseling	1	MTWRF	1700	2000	Michalski
-------	-----	-----	-----	-------------------------------	---	-------	------	------	-----------



CRN	Subject	Course	Section	Title	Credit	Days	Begin	End	Instructor
CHRISTIAN SPIRITUALITY									
TERM 1 (JUNE 8-JULY 2, 2009)									
40975	CSP	661	A	T'ai Chi Chih:	1	TR	1000	1150	Conroy
40599	CSP	670	A	Art And Spirituality	3	MTWRF	0800	0950	Howard
40978	CSP	720	A	Celtic Spirituality	3	MTWRF	1000	1150	Moynahan
TERM 1 (JUNE 8-JUNE 26, 2009)									
40031	CSP	665	A	Spirit of Diocesan Priesthood	1	MTWRF	1530	1730	Aschenbrenner
TERM 1 (JUNE 8-JUNE 13, 2009)									
40990	CSP	721	A	The Marian Dimension of Spiritual Direction	1	MTWRFS	1330	1520	Monaghan
TERM 1 (JUNE 15-JUNE 20, 2009)									
40989	CSP	723	A	Creating a Preached Retreat	1	MTWRFS	1330	1520	Schwan
TERM 1 (JUNE 8-JULY 2, 2009)									
40601	CSP	765	A	True Christian Growth	3	MTWRF	0800	0950	Schwan
40977	CSP	770	A	Called to Holiness	3	MTWRF	1330	1520	Wright
40032	CSP	773	A	Theology of Spirit Exercises	3	MTWRF	1530	1720	McCaslin
40033	CSP	776	A	Discernment of Spirits	3	MTWRF	1000	1150	Hauser
40714	CSP	779	A	Spirituality & Social Concerns	3	MTWRF	0800	0950	Kelly
40034	CSP	780	A	Intro to Personal Counseling	3	MTWRF	1000	1150	Harris
40077	CSP	781	A	Pre-Practicum in Spirit Dir	3	MTWRF	0800	0950	Conroy
40035	CSP	782	A	Post-Practicum in Spirit Dir	3/4	MTWRF	1530	1720	Conroy
40133	CSP	791	A	Spirituality and Sexuality	1	MTWRF	1530	1720	Luebbert
TERM 2 (JULY 6-JULY 11, 2009)									
40157	CSP	666	A	Centering Prayer and Exper	1	MTWRFS	1330	1520	Hall
40280	CSP	676	A	18th & 19th Century Annotation	1	MTWRFS	0800	0950	Schwan
40991	CSP	722	A	Mary in Life of St. Ignatius	1	MTWRFS	1530	1720	Monaghan
40979	CSP	765	B	True Christian Growth	3	MTWRF	1530	1720	Flick
TERM 2 (JULY 7-JULY 28, 2009)									
40708	CSP	671	A	Yoga	1	TWR	1000	1150	Harris
TERM 2 (JULY 13-JULY 18, 2009)									
40426	CSP	672	A	True Self/ False Self	1	MTWRFS	1330	1520	Ginn
TERM 2 (JULY 6-JULY 30, 2009)									
40640	CSP	717	A	Jungian Psychology and CSP	3	MTWRF	1000	1150	Bachman
40805	CSP	718	A	A Theology and Spirituality of Conversion	3	MTWRF	1330	1520	Zynda
40976	CSP	761	A	Litur Fnd Christian Spirituality	3	MTWRF	0800	0950	Burke-Sullivan
40128	CSP	762	A	Doctrinal Foundations	3	MTWRF	0800	0950	O'Keefe
40130	CSP	769	A	The History of CSP	3	MTWRF	1330	1520	Healey
40158	CSP	773	B	Theology of Spirit Exercises	3	MTWRF	1000	1150	Burke-Sullivan
40159	CSP	776	B	Discernment of Spirits	3	MTWRF	1000	1150	Flick
40160	CSP	780	B	Intro to Personal Counseling	3	MTWRF	1330	1520	Harris
40203	CSP	781	B	Pre-Practicum in Spirit Dir	3	MTWRF	1530	1720	Bachman
40161	CSP	782	B	Post-Practicum in Spirit Dir	3/4	MTWRF	0800	0950	Zynda



CRN	Subject	Course	Section	Title	Credit	Days	Begin	End	Instructor
-----	---------	--------	---------	-------	--------	------	-------	-----	------------

ECONOMICS

MAY SESSION (MAY 18-JUNE 5, 2009)

40036	ECO	203	A	Introductory Microeconomics	3	MTWRF	0900	1200	Murthy
41021	ECO	528	A	International Eco Development	3	MTWRF	0900	1200	Briggs

TERM 1-3 WEEK (JUNE 8-JUNE 26, 2009)

40162	ECO	205	A	Introductory Macroeconomics	3	MTWRF	0900	1200	Deskins
41020	ECO	303	A	Intermediate Microeconomics	3	MTWRF	0900	1200	Murthy

EDUCATION

MAY SESSION (MAY 18-JUNE 5, 2009)

40243	EDU	501	A	Psy of Exceptional Children	3	MTWRF	0900	1200	Doyle
40735	EDU	503	A	Foundations of Education	3	MTWRF	0800	1600	Cook

MAY SESSION (MAY 18-JUNE 5, 2009)

40803	EDU	543	A	Practicum Language Learning	3				Ishii-Jordan
-------	-----	-----	---	-----------------------------	---	--	--	--	--------------

TERM 1-3 WEEK (JUNE 8-JUNE 26, 2009)

40204	EDU	510	A	Growth and Development	3	MTWRF	1300	1600	Dickel
40164	EDU	548	A	Teaching Reading	3	MTWRF	1300	1600	Olson
40244	EDU	622	WC	School-Community Relations	3	MTWRF	0900	1200	Durow
40988	EDU	645	A	Living English: Language	3	MTWRF	0900	1200	Fajardo-Acosta
40038	EDU	692	A	Cultural Issues in Education	3	MTWRF	1300	1600	Ishii-Jordan

TERM 1 (JUNE 8-JULY 24, 2009)

40425	EDU	680	A	Spirituality of Teaching I	1				Davies
40215	EDU	681	A	Spirituality of Teaching II	1				Davies

TERM 2 (JULY 6-JULY 24, 2009)

40196	EDU	551	A	Instruction for Sec Tchrs	3	MTWRF	1300	1600	Johnson
40086	EDU	583	A	Mgt Prac Classrm Teachers	3	MTWRF	0900	1200	Meyers
40987	EDU	586	A	Selected Topics in Education	2	MTWRF	0900	1200	Hanson
40037	EDU	600	A	Curr Const Ele and Sec Sch	3	MTWRF	0900	1200	TBD

TERM 2 (JULY 13-JULY 24, 2009)

40163	EDU	520	A	Foundations of Catholic Educ	3	MTWRF	1300	1600	Simonds
-------	-----	-----	---	------------------------------	---	-------	------	------	---------

EMERGENCY MEDICAL SERVICES

(MAY 19-AUGUST 6, 2009)

40231	EMS	101	N	Fundamentals of EMS	4	TR	1800	2200	Turpel
-------	-----	-----	---	---------------------	---	----	------	------	--------

(MAY 11-JUNE 25, 2009)

40114	EMS	411	A	Special Considerations	3	MTR	0900	1600	Miller
40115	EMS	413	A	Operations	2	MTR	0900	1600	Miller
40116	EMS	415	A	Assessment Based Management	1	MTR	0900	1600	Miller
40117	EMS	424	A	Clinical Practicum III	2				Lentsch
40118	EMS	425	A	Field Practicum III	2				Lentsch
40023	EMS	460	A	Advanced EMS for Nurses	6	MTWRFS	0900	1600	Miller

(JULY 6-JULY 17, 2009)

41004	EMS	460	B	Paramedic Certification	6	MTWRFS	0900	1600	Miller
-------	-----	-----	---	-------------------------	---	--------	------	------	--------

CRN	Subject	Course	Section	Title	Credit	Days	Begin	End	Instructor
ENGLISH									
MAY SESSION (MAY 18-JUNE 5, 2009)									
40691	ENG	120	B	World Literature I	3	MTWRF	0900	1215	Habash
40002	ENG	121	A	World Literature II	3	MTWRF	0900	1200	Fajardo-Acosta
40003	ENG	150	A	Rhetoric and Composition	3	MTWRF	0900	1200	Dornsife
40773	ENG	312	A	Mass Media & Modern Culture	3	MTWRF	0900	1200	Hatfield
TERM 1-3 WEEK (JUNE 8-JUNE 26, 2009)									
40040	ENG	150	W	Rhetoric and Composition	3	MTWRF	0900	1200	Whipple
TERM 1-5 WEEK (JUNE 8-JULY 10, 2009)									
40451	ENG	120	A	World Literature I	3	MTWRF	0915	1045	Churchill
40039	ENG	121	B	World Literature II	3	MTWRF	1100	1230	Chiwengo
41055	ENG	453	A	Modern Poetry	3	MTWRF	1100	1215	TBD
TERM 1-3 WEEK (JULY 13-JULY 31, 2009)									
41054	ENG	202	N	Entering Professional Dialogue	3	MTR	1800	2040	Keegan
40742	ENG	470	A	Seminar in Film Studies	3	MTWRF	1100	1215	Spencer
TERM 2- 5 WEEK (JULY 13-AUGUST 13, 2009)									
40216	ENG	121	W	World Literature II	3	Online			Fajardo-Acosta
41053	ENG	150	B	Rhetoric and Composition	3	MTWRF	1100	1230	Stafford
40916	ENG	380	N	History & Criticism of Cinema	3	MW	1800	2200	Birkholt
ENVIRONMENTAL SCIENCES									
MAY SESSION (MAY 18-JUNE 5, 2009)									
41014	EVS	481	A	Terrestrial Ecology	4	MTWRF	0900	1200	Vinton
						MTWRF	1300	1600	Vinton
40070	EVS	571	A	Animal Behavior	3	MTWRF	0900	1200	Burk
TERM 1-5 WEEK (JUNE 8-JULY 10, 2009)									
40094	EVS	113	N	Intro to Atmospheric Sciences	3	MWR	1800	2040	Ritz
41006	EVS	114	A	Intro Atmospheric Sciences Lab	1	WR	1530	1645	Ludwig
41012	EVS	390	A	Environmental Science	3	MTWRF	1315	1545	Kenning
40594	EVS	401	A	Biostatistics	4	MWF	0900	1300	Cullum

Faculty Spotlight: Ted Burk



Ted Burk grew up in a small town in Kansas and obtained his B. A. in Biology from University of Kansas. He earned a D. Phil. in Zoology at the University of Oxford as a Rhodes Scholar, under the supervision of the controversial evolutionary biologist Richard Dawkins.

After a three-year postdoctoral fellowship at the University of Florida, he joined the Creighton Biology Department in 1982. He has received both the College of Arts and Sciences Dean's Award for Excellence in Teaching and the Outstanding Advisor Award. His research interests are in behavioral and conservation biology; he has authored 29 papers and book chapters and is co-author of the textbook *Biology of Animal Behavior*.

He teaches a variety of courses at Creighton, including General Biology, Animal Behavior, Entomology, and Charles Darwin: Life and Impact. Over 8000 students have taken his General Biology course in his 27 years at Creighton.



CRN	Subject	Course	Section	Title	Credit	Days	Begin	End	Instructor
-----	---------	--------	---------	-------	--------	------	-------	-----	------------

EXERCISE SCIENCE

MAY SESSION (MAY 18-JUNE 5, 2009)

41019	EXS	125	A	First Aid	2	MTWRF	0900	1020	Conway
40010	EXS	125	B	First Aid	2	MTWRF	1030	1200	Conway

TERM 1-5 WEEK (JUNE 8-JULY 10, 2009)

40053	EXS	142	A	Personal Weight Training	1	MWF	1130	1230	Egan
40054	EXS	331	A	Human Anatomy	4	MTWRF	0900	1020	Eckerson
						MW	1030	1200	Eckerson

TERM 2- 5 WEEK (JULY 13-AUGUST 13, 2009)

40175	EXS	142	B	Personal Weight Training	1	MWF	1130	1230	Egan
40021	EXS	320	A	Human Physiology	4	MTWRF	1200	1320	Lambert
						MW	1330	1500	Lambert

FINANCE

MAY SESSION (MAY 18-JUNE 5, 2009)

40022	FIN	301	A	Managerial Finance	3	MTWRF	0900	1200	Wingender
-------	-----	-----	---	--------------------	---	-------	------	------	-----------

TERM 1-5 WEEK (JUNE 8-JULY 10, 2009)

40732	FIN	366	A	Finance Internship	3	MTWRF	1100	1230	Wells
-------	-----	-----	---	--------------------	---	-------	------	------	-------

GREEK

TERM 2-5 WEEK (JULY 13-AUGUST 13, 2009)

40719	GRK	115	A	Intensive Beginning Greek	6	MTWRF	0900	1215	Habash
-------	-----	-----	---	---------------------------	---	-------	------	------	--------

HISTORY

MAY SESSION (MAY 5-MAY 29, 2009)

40041	HIS	101	UCA	The Modern Western World	3	MR	1745	2145	Fryer
41136	HIS	103	W	The Asian World	3	Online			Gerteis

MAY SESSION (MAY 18-JUNE 5, 2009)

40717	HIS	107	W	The Middle Eastern World	3	MTWRF			Calvert
40765	HIS	108	A	The Native American World	3	MTWRF	1800	2100	Leavelle

TERM 1-5 WEEK (JUNE 8-JULY 6, 2009)

40165	HIS	101	N	The Modern Western World	3	MTWRF	1100	1250	Elliot-Meisel
-------	-----	-----	---	--------------------------	---	-------	------	------	---------------

TERM 1-5 WEEK (JUNE 8-JULY 10, 2009)

40237	HIS	103	N	The Asian World	3	MTR	1800	2030	Sherrard
-------	-----	-----	---	-----------------	---	-----	------	------	----------

TERM 2- 5 WEEK (JULY 13-AUGUST 13, 2009)

40718	HIS	101	C	The Modern Western World	3	MTWRF	1100	1215	Eastman
40042	HIS	107	N	Middle Eastern World	3	MTR	1800	2030	Calvert
40606	HIS	395	A	Selected Topics	3	MTR	1800	2030	Sherrard



CRN	Subject	Course	Section	Title	Credit	Days	Begin	End	Instructor
INSTITUTE FOR PRIESTLY FORMATION									
MAY SESSION (MAY 16-MAY 29, 2009)									
40016	IPF	501	A	Christian Prayer and Virtue	1	TWRF	0800	1015	Barron
40607	IPF	501	B	Christian Prayer and Virtue	1	TWRF	0800	1015	Horn
40715	IPF	501	C	Christian Prayer and Virtue	1	TWRF	0800	1015	Melvin
40488	IPF	501	D	Christian Prayer and Virtue	1	TWRF	0800	1015	Toups
40608	IPF	501	E	Christian Prayer and Virtue	1	TWRF	0800	1015	Traynor
41097	IPF	501	F	Christian Prayer and Virtue	1	TWRF	0800	1015	TBD
TERM 1 (JUNE 8-JULY 2, 2009)									
40065	IPF	502	A	Christian Spirit and Sexuality	3	MTWRF	0800	1015	Butler
40066	IPF	502	B	Christian Spirit and Sexuality	3	MTWRF	0800	1015	Grimes
40067	IPF	502	C	Christian Spirit and Sexuality	3	MTWRF	0800	1015	Martin
40125	IPF	502	D	Christian Spirit and Sexuality	3	MTWRF	0800	1015	Schlientz
40807	IPF	502	E	Christian Spirit and Sexuality	3	MTWRF	0800	1015	Sevcik
41098	IPF	502	F	Christian Spirit and Sexuality	3	MTWRF	0800	1015	TBD
TERM 1 (JUNE 8-JULY 19, 2009)									
40068	IPF	503	A	Spirit of Diocesan Priesthood	2	MTWRF	1530	1730	Mason Traynor
40069	IPF	503	B	Spirit of Diocesan Priesthood	2	MTWRF	1530	1730	Carruthers McKeown
40282	IPF	503	C	Spirit of Diocesan Priesthood	2	MTWRF	1530	1730	Brannen Schlesselmann
40609	IPF	503	D	Spirit of Diocesan Priesthood	2	MTWRF	1500	1700	Richter Rouch
40610	IPF	503	E	Spirit of Diocesan Priesthood	2	MTWRF	1500	1700	Rafferty Fuller
40716	IPF	503	F	Spirit of Diocesan Priesthood	2	MTWRF	1500	1700	TBD
41099	IPF	503	G	Spirit of Diocesan Priesthood	2	MTWRF	1530	1730	Aschenbrenner
TERM 2 (JULY 6-JULY 30, 2009)									
40611	IPF	504	A	The Mystery of the Liturgy	3	MTWRF	0800	1015	Cachia
40192	IPF	504	B	The Mystery of the Liturgy	3	MTWRF	0800	1015	Kanavy Gabuzda
40612	IPF	504	C	The Mystery of the Liturgy	3	MTWRF	0800	1015	McCarren
40427	IPF	504	D	The Mystery of the Liturgy	3	MTWRF	0800	1015	Kunkel Rafferty
41100	IPF	504	E	The Mystery of the Liturgy	3	MTWRF	0800	1015	Keating
INFORMATION TECHNOLOGY MANAGEMENT									
MAY SESSION (MAY 18-JUNE 24, 2009)									
40064	ITM	731	N	Information System Manage.	3	W	1800	1900	Corritore
40589	ITM	789	NB	Seminar: Advanced ITM Topics	3	TR	1800	2130	Nath
40658	ITM	790	A	Information Technology Project	3				Nath
TERM 2 (JULY 6-AUGUST 10, 2009)									
41129	ITM	789	N	Seminar in Management	3	MW	1800	2130	Chen

INTERNATIONAL RELATIONS

MAY SESSION (MAY 18-JUNE 5, 2009)

41118	INR	528	A	International Economic Devel	3	MTWRF	0900	1200	Briggs
-------	-----	-----	---	------------------------------	---	-------	------	------	--------

MAY SESSION (MAY 11-AUGUST 21, 2009)

41119	INR	510	A	The New Institutionalism	3				Clark
-------	-----	-----	---	--------------------------	---	--	--	--	-------

41122	INR	735	A	Seminar on Russian Politics	3				Clark
-------	-----	-----	---	-----------------------------	---	--	--	--	-------

MAY SESSION (MAY 11-JULY 27, 2009)

41121	INR	603	N	Proseminar in American Dip	3	M	1830	2130	Elliot-Meisel
-------	-----	-----	---	----------------------------	---	---	------	------	---------------

JOURNALISM

MAY SESSION (MAY 18-JUNE 5, 2009)

40564	JMC	341	A	Public Relations Writing	3	MTWRF	0900	1200	Wirth
-------	-----	-----	---	--------------------------	---	-------	------	------	-------

40706	JMC	365	A	International Mass Commun	3	MTWRF	0900	1200	Zuegner
-------	-----	-----	---	---------------------------	---	-------	------	------	---------

40834	JMC	438	A	Media Ethics	3	MTWRF	1300	1600	Maciejewski
-------	-----	-----	---	--------------	---	-------	------	------	-------------

TERM 1-3 WEEK (JUNE 8-JUNE 26, 2009)

40043	JMC	219	A	News Reporting	3	MTWR	0900	1200	Boyle
-------	-----	-----	---	----------------	---	------	------	------	-------

40992	JMC	331	A	Editing	3	MTWRF	0900	1200	Zuegner
-------	-----	-----	---	---------	---	-------	------	------	---------

40993	JMC	440	A	Media Research	3	MTWRF	1300	1600	Maciejewski
-------	-----	-----	---	----------------	---	-------	------	------	-------------

40838	JMC	529	A	Law of Mass Communication	3	MTWRF	1300	1600	Boyle
-------	-----	-----	---	---------------------------	---	-------	------	------	-------

TERM 2-3 WEEK (JULY 20-AUGUST 7, 2009)

40438	JMC	379	A	Print Design	3	MTWRF	1300	1600	Davies
-------	-----	-----	---	--------------	---	-------	------	------	--------

40235	JMC	382	A	Web Design	3	MTWRF	0900	1200	Davies
-------	-----	-----	---	------------	---	-------	------	------	--------

LATIN

TERM 1-5 WEEK (JUNE 8-JULY 10, 2009)

40634	LAT	115	A	Intensive Beginning Latin	6	MTWRF	0900	1215	Habash
-------	-----	-----	---	---------------------------	---	-------	------	------	--------

MASTER OF ARTS IN MINISTRY

TERM 1 (JUNE 21-JUNE 27, 2009)

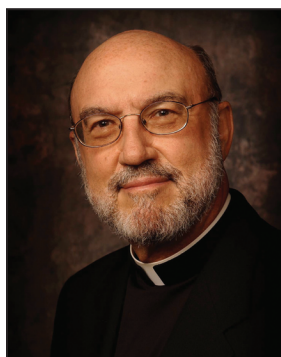
41001	MAM	675	A	Orientation to Study Ministry	1	MTWRF	0900	1700	Burke-Sullivan
-------	-----	-----	---	-------------------------------	---	-------	------	------	----------------

TERM 1 (JUNE 28-AUGUST 22, 2009)

41002	MAM	676	W	Theology and Catechesis	3	Online			Burke-Sullivan
-------	-----	-----	---	-------------------------	---	--------	--	--	----------------

41003	MAM	761	W	Historical Develop Doctrine	3	Online			O'Keefe
-------	-----	-----	---	-----------------------------	---	--------	--	--	---------

Faculty Spotlight: Fr. Richard Hauser, S.J.



Father Hauser has been teaching at Creighton since 1972. His special area for teaching and publishing is contemporary Christian spirituality. He has served as chair of the theology department and rector of the Jesuit Community.

He is currently director of the Masters Program in Christian Spirituality. Father is perhaps best known by Creighton students as the regular celebrant at the 10 p.m. Sunday Night Candlelight Mass.

CRN	Subject	Course	Section	Title	Credit	Days	Begin	End	Instructor
-----	---------	--------	---------	-------	--------	------	-------	-----	------------

MASTER OF BUSINESS ADMINISTRATION

TERM 1B (MAY 18-JUNE 24, 2009)

40728	MBA	711	N	Managerial Finance	3	TR	1800	2130	Wingender
40443	MBA	739	N	Tax Theory Business Decisions	3	TR	1800	2130	Purcell
40135	MBA	775	N	Business Policy Managerial Action	3	MW	1800	2130	Hoh
40730	MBA	776	N	Business, Ethics and Society	3	MW	1800	2130	Gustafson
40590	MBA	779	A	Seminar in Management	3				Wells
40743	MBA	779	B	Seminar in Management	1	S	0800	1600	Wells
						F	1300	2000	Wells
40744	MBA	779	C	Seminar in Management	1	S	0800	1600	Wells
						F	1300	2000	Wells

TERM 1B (MAY 19-JUNE 23, 2009)

40693	MBA	779	NA	Seminar in Management	3	TR	1800	2130	Nath
-------	-----	-----	----	-----------------------	---	----	------	------	------

TERM 2B (JULY 6-AUGUST 11, 2009)

41022	MBA	701	A	Financial Reporting for MBA's	3		1800	2130	TBD
41023	MBA	719	N	Finance Seminar	3	MW	1800	2130	Dunham
40134	MBA	771	N	Organizational Behavior	3	TR	1800	2130	Darnold
40284	MBA	779	N	Seminar in Management	3	MW	1800	2130	Chen
40731	MBA	779	D	Seminar in Management	3	S	0800	1600	Wells
						F	1300	2000	Wells

MANAGEMENT

TERM 1-5 WEEK (JUNE 8-JULY 10, 2009)

40174	MGT	301	A	Managerial Process	3	MTWRF	0915	1045	Hoh
-------	-----	-----	---	--------------------	---	-------	------	------	-----

MILITARY SCIENCE

TERM 1-5 WEEK (JUNE 8-JULY 10, 2009)

40172	MIL	205	A	ROTC Leadership Training	3				Murphy
40173	MIL	351	A	Leadership Development	3				Murphy
40213	MIL	352	A	ROTC Nurse Summer Training	3				Murphy

MANAGEMENT INFORMATION SYSTEMS

MAY SESSION (MAY 18-JUNE 5, 2009)

40008	MIS	253	A	Management Information Syst.	3	MTWRF	0900	1200	Corritore
-------	-----	-----	---	------------------------------	---	-------	------	------	-----------

MARKETING

MAY SESSION (MAY 18-JUNE 5, 2009)

40048	MKT	319	A	Principles of Marketing	3	MTWRF	0900	1200	Adkins
-------	-----	-----	---	-------------------------	---	-------	------	------	--------

TERM 1-5 WEEK (JUNE 8-JULY 10, 2009)

40733	MKT	366	A	Marketing Internship	3	MTWRF	1100	1230	Wells
-------	-----	-----	---	----------------------	---	-------	------	------	-------

MASTER OF SECURITY ANALYSIS

TERM 1 (JUNE 22-AUGUST 16, 2009)

41115	MSA	720	WB	Ethical Professional Standards	1				Jorgensen
41114	MSA	732	W	Capital Markets	3				Washer

TERM 1 (MAY 18-JUNE 24, 2009)

40727	MSA	720	WA	Ethical Professional Standards	3				Jorgensen
40591	MSA	734	WC	Equity Analysis	3	TR	1800	2130	Lefebvre

CRN	Subject	Course	Section	Title	Credit	Days	Begin	End	Instructor
-----	---------	--------	---------	-------	--------	------	-------	-----	------------

MATHEMATICS

TERM 1-5 WEEK (JUNE 8-JULY 10, 2009)

40049	MTH	103	N	Intermediate Algebra	3	MW	1700	2100	Carlson
40050	MTH	135	N	College Algebra	3	MW	1700	2100	Nielsen
40705	MTH	137	N	Trigonometry	3	TR	1700	2100	Mallenby
40051	MTH	141	N	Applied Calculus	3	TR	1700	2100	Malik
40170	MTH	201	N	Applied Mathematics	3	TR	1700	2100	Fong
40584	MTH	245	N	Calculus I	4	MTR	1700	2030	Crist
40802	MTH	363	N	Elementary Probability Stats	3	MW	1700	2100	Cheng

TERM 1-3 WEEK (JULY 13-JULY 31, 2009)

40171	MTH	246	N	Calculus II	4	MTR	1700	2030	Cheng
-------	-----	-----	---	-------------	---	-----	------	------	-------

MUSIC

TERM 1-5 WEEK (JUNE 8-JULY 10, 2009)

40701	MUS	273	A	Music Appreciation	3	MTWRF	1100	1230	Breland
40997	MUS	375	A	Music of the World's Peoples	3	MTWRF	1315	1445	Williams

NATIVE AMERICAN STUDIES

MAY SESSION (MAY 18-JUNE 5, 2009)

41029	NAS	108	N	The Native American World	3	MTWRF	1800	2100	Leavelle
40963	NAS	324	A	Native American World View	3	MTWRF	0900	1200	Brown

NEGOTIATION AND DISPUTE RESOLUTION

MAY SESSION (MAY 2-MAY 30, 2009)

41117	NDR	615	N	Negotiation	3	MTR	1700	2000	Kuttner
						S	0900	1500	

TERM 1 (JUNE 1-JUNE 25, 2009)

41102	NDR	694	N	Human Rights	2				Font-Guzman
41131	NDR	653	N	Principles of Org Consulting	2				Hanson



CRN	Subject	Course	Section	Title	Credit	Days	Begin	End	Instructor
NURSING									
MAY 18-AUGUST 13, 2009									
40287	NUR	381	A	Care Management	2	M			Shirley
40288	NUR	382	A	Care Management Practicum	1	R	1300	1550	Shirley
40431	NUR	382	B	Care Management Practicum	1	T	1300	1550	Shirley
40290	NUR	386	A	Research and Evidence-based	3	F	1200	1450	Foyt
40138	NUR	390	A	Care Management & Outcomes	6				Manz
40139	NUR	391	A	Care Management	6				Manz
40140	NUR	394	A	Health Care Management	2	F	1500	1650	Costanzo
MAY 12-JUNE 26, 2009									
40141	NUR	493	A	Dissemination of Research	1	T	1100	1220	Tinley
MAY 18-AUGUST 14, 2009									
40458	NUR	494	A	Seminar Professional Nursing	4	T			Graves
MAY 18-JUNE 26, 2009									
40142	NUR	496	A	Care Management	4				Parsons
40136	NUR	497	A	Care Management	4				Parsons
MAY 11-AUGUST 14, 2009									
40637	NUR	302	W	Health Care Leadership II	2	Online			Shirley
40137	NUR	498	A	Senior Preceptorship	6				Parsons
40638	NUR	400	W	Evidence-Based Nursing Care I	3	Online			Shirley
40639	NUR	401	W	Evidence-Based Practicum I	4	Online			Parks
40664	NUR	404	W	Bioethics	3	Online			Chapple
MAY 18-JUNE 5, 2009									
40186	NUR	224	WA	Health Assessment	2	M	1200	1250	Todd
40187	NUR	225	A	Health Assessment Practicum	1	M	1300	1650	Todd
40188	NUR	228	W	Lifespan Development	3	M	1200	1250	Boardman
40189	NUR	252	WA	Human Pathophysiology	3				White
40190	NUR	253	W	Human Pathophysiology Lab	1				White
40932	NUR	491	A	Spanish for Health Care	2	MTWRF	1000	1220	Vanden Bosch
PHILOSOPHY									
MAY SESSION (MAY 18-JUNE 5, 2009)									
40152	PHL	107	A	Crit & History Intro To Phil	3	MTWRF	0900	1200	Murray
40011	PHL	320	A	God & Persons: Phil Reflection	3	MTWRF	0900	1200	Schuler
40962	PHL	324	A	Native American World View	3	MTWRF	0900	1200	Brown
TERM 1-3 WEEK (JUNE 8-JUNE 26, 2009)									
40961	PHL	250	N	Phil Fndtns Ethical	3	MTWRF	1800	2100	Yuan
40952	PHL	420	A	Science And Religion	3	MTWRF	0900	1200	Selk
TERM 2-3 WEEK (JULY 13-JULY 31, 2009)									
40132	PHL	250	A	Philosophical Foundations	3	MTWRF	0900	1200	Brown
40055	PHL	320	N	God & Persons: Phil Reflect	3	MTWRF	1800	2100	Hause

CRN Subject Course Section Title Credit Days Begin End Instructor

PHYSICS

TERM 1-5 WEEK (JUNE 8-JULY 10, 2009)

40056	PHY	107	A	Introductory Astronomy	3	MTWR	1245	1445	Kriegler
40259	PHY	108	LA	Astronomy Laboratory	1	TR	1500	1630	TBD
40057	PHY	211	A	General Physics I	4	TWRF	0915	1045	TBD
						M	1745	1845	TBD
40261	PHY	211	LA	PHY 211 LAB LA	0	TWRF	0730	0900	TBD
41031	PHY	211	LB	PHY 211 LAB LB	0	TWRF	0915	1045	TBD
40262	PHY	211	LC	PHY 211 LAB LC	0	TWRF	1100	1230	TBD
40263	PHY	211	LD	PHY 211 LAB LD	0	TWRF	1240	1410	TBD
40264	PHY	211	LE	PHY 211 LAB LE	0	TWRF	1420	1550	TBD
40265	PHY	211	LF	PHY 211 LAB LF	0	TWRF	1600	1730	TBD
40671	PHY	211	LG	PHY 211 LAB LG	0	MTWR	2000	2130	TBD
40058	PHY	211	N	General Physics I	4	M	1745	1945	TBD
						TWR	1800	1945	TBD

TERM 2-5 WEEK (JULY 13-AUGUST 13, 2009)

40177	PHY	212	A	General Physics II	4	TWRF	0915	1045	TBD
						M	1745	1845	TBD
40274	PHY	212	LA	PHY 212 LAB LA	0	TWRF	0730	0900	TBD
40275	PHY	212	LB	PHY 212 LAB LB	0	TWRF	0915	1045	TBD
40276	PHY	212	LC	PHY 212 LAB LC	0	TWRF	1100	1230	TBD
40277	PHY	212	LD	PHY 212 LAB LD	0	TWRF	1240	1410	TBD
40278	PHY	212	LE	PHY 212 LAB LE	0	TWRF	1420	1550	TBD
40279	PHY	212	LF	PHY 212 LAB LF	0	TWRF	1600	1730	TBD
40672	PHY	212	LG	PHY 212 LAB LG	0	MTWR	2000	2130	TBD
40178	PHY	212	N	General Physics II	4	M	1745	1945	TBD
						TWR	1800	1945	TBD

POLITICAL SCIENCE

MAY SESSION (MAY 18-JUNE 5, 2009)

40959	PLS	481	A	Poverty, Develop Pub Policy		MTWRF	0900	1200	Wunsch
-------	-----	-----	---	-----------------------------	--	-------	------	------	--------

TERM 2-3 WEEK (JULY 13-JULY 31, 2009)

40428	PLS	313	A	Politics of The Middle East	3	MTWRF	0900	1030	Meeks
-------	-----	-----	---	-----------------------------	---	-------	------	------	-------

PSYCHOLOGY

MAY SESSION (MAY 18-JUNE 5, 2009)

40618	PSY	351	A	Abnormal Psychology	3	MTWRF	1230	1530	Huss
40126	PSY	471	A	Crisis Intervention	3	MTWRF	0900	1200	Badura Brack

TERM 1-3 WEEK (JUNE 8-JUNE 26, 2009)

40059	PSY	111	A	Introductory Psychology	3	MTWRF	0900	1200	Badura Brack
-------	-----	-----	---	-------------------------	---	-------	------	------	--------------

TERM 1-5 WEEK (JUNE 8-JULY 10, 2009)

40956	PSY	344	A	Social Psychology	3	MTWRF	0915	1045	Leak
-------	-----	-----	---	-------------------	---	-------	------	------	------

TERM 2-5 WEEK (JULY 13-JULY 31, 2009)

40957	PSY	428	W	Multicultural Issues in Psy	3	Online			Budesheim
-------	-----	-----	---	-----------------------------	---	--------	--	--	-----------



CRN	Subject	Course	Section	Title	Credit	Days	Begin	End	Instructor
RUSSIAN									
TERM 1-3 WEEK (JUNE 8-JUNE 26, 2009)									
40779	RUS	101	A	Beginning Russian I	3	MTWRF	0900	1200	Dadajanova
SOCIOLOGY									
MAY SESSION (MAY 18-JUNE 5, 2009)									
41050	SOC	101	A	Self & Society	3	MTWRF	0900	1200	Ault
41051	SOC	321	A	Soc Criminal Justice System	3	MTWRF	0900	1200	Murray
SPANISH									
MAY SESSION (MAY 18-JUNE 5, 2009)									
40983	SPN	102	A	Beginning Spanish II	3	MTWRF	0900	1200	Bohlke
TERM 1-3 WEEK (JUNE 8-JUNE 26, 2009)									
40703	SPN	201	A	Intermediate Spanish I	3	MTWRF	0900	1200	McClanahan
TERM 1-5 WEEK (JUNE 8-JULY 10, 2009)									
40422	SPN	115	A	Intensive Beginning Spanish	6	MTWRF	0900	1200	Santiago
TERM 2-3 WEEK (JULY 13-JULY 31, 2009)									
40982	SPN	201	B	Intermediate Spanish I	3	MTWRF	0900	1200	Spangler
TERM 2-5 WEEK (JULY 13-AUGUST 13, 2009)									
40981	SPN	115	B	Intensive Beginning Spanish	6	MTWRF	0900	1200	Coffey
SENIOR PERSPECTIVE									
MAY SESSION (MAY 12-JUNE 5, 2009)									
41135	SRP	478	N	Intersections of Working Life	3	TR	1745	2145	Kirby
MAY SESSION (MAY 18-JUNE 5, 2009)									
40954	SRP	422	A	Children of Poverty	3	MTWRF	1300	1600	Harris
40950	SRP	480	A	American Prisons	3	MTWRF	0900	1200	Rettig
40960	SRP	481	A	Poverty, Develop Pub Policy		MTWRF	0900	1200	Wunsch
TERM 1-3 WEEK (JUNE 8-JUNE 26, 2009)									
40951	SRP	420	A	Science and Religion	3	MTWRF	0900	1200	Selk
TERM 1-5 WEEK (JUNE 8-JULY 10, 2009)									
40699	SRP	428	A	Film and the Fine Arts	3	MTWRF	0915	1045	Hough
SOCIAL WORK									
MAY SESSION (MAY 18-JUNE 5, 2009)									
40955	SWK	422	A	Children of Poverty	3	MTWRF	1300	1600	Harris
THEATRE									
TERM 1-5 WEEK (JUNE 8-JULY 10, 2009)									
40998	THR	161	A	Theatre Appreciation	3	MTWRF	1130	1300	McCandless
41130	THR	428	A	Film and the Fine Arts	3	MTWRF	0915	1045	Hough
TERM 2-3 WEEK (JULY 13-JULY 31, 2009)									
41025	THR	131	A	Acting I	3	MTWRF	0900	1200	Klem

THEOLOGY

MAY SESSION (MAY 18-JUNE 5, 2009)

40702	THL	100	A	Christianity in Context	3	MTWRF	0900	1200	Kalkowski
40015	THL	209	A	The Synoptic Gospels	3	MTWRF	0900	1200	Malina
40576	THL	344	A	Thl Christian Marriage	3	MTWRF	0900	1200	Risch

TERM 1 (JUNE 8-JULY 2, 2009)

41108	THL	661	A	T'ai Chi Chih	1	TR	1000	1150	Conroy
40602	THL	670	A	Art and Spirituality	3	MTWRF	0800	0950	Howard
41110	THL	765	A	True Christian Growth	3	MTWRF	0800	0950	Schwan
41111	THL	770	A	Called To Holiness	3	MTWRF	1330	1520	Wright
40061	THL	773	A	The Theology of Spiritual Ex	3	MTWRF	1530	1720	McCaslin
40184	THL	776	A	Discernment of Spirits	3	MTWRF	1000	1150	Hauser
40852	THL	779	A	Spirituality & Social Concerns	3	MTWRF	0800	0950	Kelly
40603	THL	791	A	Spirituality and Sexuality	3	MTWRF	1530	1720	Sheehan

TERM 1 (JUNE 1-JUNE 25, 2009)

40632	THL	354	N	Intro to Judaism	3	MR	1745	2145	Greenspoon
-------	-----	-----	---	------------------	---	----	------	------	------------

TERM 1 (JUNE 8-JUNE 26, 2009)

40628	THL	335	A	Jesus Christ: Yesterday & Today	3	MTWRF	0900	1200	Hall
40953	THL	420	A	Science and Religion	3	MTWRF	0900	1200	Selk

TERM 1-5 WEEK (JUNE 8-JULY 10, 2009)

40181	THL	250	UCA	Theological Foundations	3				Salzman
40627	THL	250	WA	Theological Foundations	3	Online			Salzman

TERM 2 (JULY 6-JULY 11, 2009)

40182	THL	666	A	Centering Prayer and Exper	1	MTWRFS	1330	1520	Hall
40281	THL	765	B	True Christian Growth	3	MTWRF	1530	1720	Flick
41113	THL	789	A	Spirituality for Americans	3	MTWRFS	0800	0950	Hauser

TERM 2 (JULY 6-JULY 31, 2009)

41112	THL	718	A	Theology and Spiritual Conv.	3	MTWRF	1330	1520	Zynda
41109	THL	761	A	Litur Fnd Christian Spirit	3	MTWRF	0800	0950	Burke-Sullivan
40129	THL	762	A	Doctrinal Foundation of CSP	3	MTWRF	0800	0950	O'Keefe
40131	THL	769	A	The History of CSP	3	MTWRF	1330	1520	Healey
40183	THL	773	B	The Theology of Spiritual Ex	3	MTWRF	1000	1150	Burke-Sullivan
40062	THL	776	B	Discernment of Spirits	3	MTWRF	1000	1150	Flick

TERM 2-3 WEEK (JULY 13-JULY 31, 2009)

40452	THL	201	A	Reading the Old Testament	3	MTWRF	0900	1200	Roddy
-------	-----	-----	---	---------------------------	---	-------	------	------	-------

TERM 2-5 WEEK (JULY 13-AUGUST 13, 2009)

40180	THL	201	W	Reading the Old Testament	3	Online			Simkins
-------	-----	-----	---	---------------------------	---	--------	--	--	---------

WOMEN'S AND GENDER STUDIES

TERM 1-5 WEEK (JUNE 8-JULY 10, 2009)

40124	WGS	440	N	Gender Communication	3	MW	1800	2200	McBride
-------	-----	-----	---	----------------------	---	----	------	------	---------

2009 Summer Travel Courses

SCANDINAVIA

May 11-22 and June 1-17, 2009

Note: May 11-22 is at Creighton and June 1-17 is in Scandinavia

EXS 407 Basic Statistics and Research Design (3)

EXS 495 Directed Independent Study (1-3)

The Department of Exercise Science offers the opportunity to explore the methods of applied human research by completing Basic Statistics and Research Design, EXS 407, during the summer in Scandinavia. We will travel via plane, train, and ship to Copenhagen, Denmark; Malmo and Stockholm, Sweden; and Helsinki and Jyvaskyla, Finland. Research will be presented in the areas of medicine, genetics, human performance, musculoskeletal structure and injury, diabetes, public health nutrition, and obesity prevention. The certified writing component of the course will be fulfilled through a review of current research literature completed prior to travel, and an experience journal completed during and after travel. Students will have the opportunity to sightsee and explore Scandinavian history and culture in each city.

Fees: The fees for tuition, airfare, housing, most breakfasts, train travel, ship travel, public transportation, and some sightseeing are estimated at \$3,500 USD. Additional meals and miscellaneous expenses are estimated at \$500 USD. All expenses are estimated and subject to change.

Contact Information: Please contact Dr. Anthony Bull with additional questions, (402) 280-2492, KFC 234, abull@creighton.edu; website: www.scandinavia2009.doctorofexercise.com.



CHINA

May 17-June 7, 2009

PHL/THL 351 Introduction to Chinese Philosophy (3)

ARH 401 History and Methods of Art History (3)

The Philosophy Department at Creighton University offers a study abroad opportunity in China during the summer of 2009. Fifteen Creighton students will be chosen to take part in this program, which will be led by two or three faculty members. The travel adventure will include a three-credit course. Students may choose one of the following courses: Buddhism, Asian Arts or Chinese Woman Studies. This travel opportunity is supported by the College of Arts and Sciences and by the Soong Ching-Ling Foundation in China. Some locations include: *Beijing*: Chinese National Museum, Beijing and Renmin Universities, Former Residence of Soong Ching-Ling, Tiananmen Square, Forbidden City, the Great Wall, Yonghe Temple, and more; *Xian*: Shanxi Chinese History Museum, Terracotta Army Excavation, Pinyao Ancient City; *Da Tong*: Yungang Buddhist Caves, the Temple in the Air; *Yellow Mountains*: Buddhist temples; Nanjing and Shanghai.

Fees: The total cost of the trip is \$3,600. This covers tuition, international airfare, hotels, train travel in China, other local transportation, three meals daily, fees to visit museums and historical sites, and mandatory travel insurance for international activity. Money for other personal expenses, of course, will be the student's own responsibility.

Contact Information: Dr. Jinmei Yuan, Humanities Center, Room 114; (402) 280-3309; jinmei@creighton.edu.



MEXICO

May 17-June 7, 2009

BIO/EVS 440 Field Biology of the Desert Southwest (4)

A certified writing compliant field course designed to allow students to study faunal and floral desert adaptations. Students spend three weeks living at a field station in San Carlos, Sonora, Mexico on the Sea of Cortez, 350 miles south of Tucson, Arizona. Each participant utilizes field data to determine how small, ectothermic vertebrates utilize external heat sources in order to thermoregulate, culminating in a paper written at the field station using Creighton's wireless, portable field computer network. Day trips include nearby Nacapule Canyon, night time and day time visits to local tide pools, snorkeling trips to document common reef fish diversity and a visit to the sea lion colonies on Isla San Pedro.

Fees: Fees, including round trip airfare, all ground transportation, all room and meal expenses estimated at \$1,584.

Contact Information: A student information form and meeting with the instructor are required prior to formal application with FLPA. Contact: Dr. James Platz, Creighton University, Department of Biology, Hixson-Lied, Rm. 439; jplatz@creighton.edu.



GERMANY

May 27-June 17, 2009

GER 525 The New Berlin (3)

Intensive, experiential language study and introduction to German life and culture. Study history; explore monuments, museums, and memorial sites; visit places of individual students' interests such as schools, congregations, hospitals, government agencies; meet your instructor's family and friends. Excursions to Krakau (Poland) or Prague (Czech Republic), as desired by group and/or budget permitting. Pre-departure meetings and assignments; immersion language instruction, practice and testing; on-site lectures, interviews, home visits; presentations, reflection essays, journals.

Fees: Approximately \$2,200 plus airfare. Program cost includes tuition, accommodation with breakfast at Hotel Bogota, public transportation, admission to museums, guest lectures, train travel and accommodation for at least one excursion.

Contact information: Dr. Sybille Bartels, Modern Language and Literatures; DHHC 231; SybilleBartels@creighton.edu; (402) 280-1441 (office).



2009 Summer Travel Courses

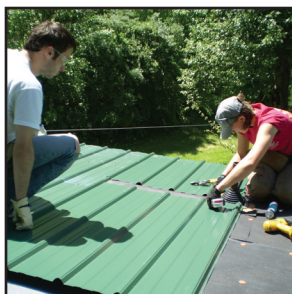
WEST VIRGINIA

May 18-June 4, 2009

SRP/JPS/ EDU 470 Poverty in America (3)

Students in this class will travel to West Virginia and live with a community that serves those of the area in various forms of outreach. There will be opportunities for assisting in home repair, tutoring children, gathering and cooking for community night, visiting elderly and/or homebound and coming to know the particular strengths and perspectives of those who deal with poverty day to day, all their lives. The community we live with emphasizes the importance of simplicity, prayer, service, community and sustainability, they integrate these into the work they do in the surrounding areas. This course is; a senior perspective course and a certified writing course.

Contact Information: If you are interested, have questions or would like an application, please contact Alice Smith at (402) 280-3623 or e-mail her at alices@creighton.edu. You may also download the application form from the Education Department's website <http://www2.creighton.edu/ccas/education> or get a hardcopy from Judy Streitz in the Education Department.



IRELAND

June 9-July 4, 2009

HIS 395 Selected Topics: Modern Ireland (3)
ENG 300 Introduction to Creative Writing (3)

Participants in the Creighton University Summer School in Ireland program will spend 4 weeks at Trinity College Dublin studying Ireland's history and literary culture, both past and present. Group trips and independent weekend travel will afford students the opportunity to explore not only cosmopolitan Dublin and its environs, but also the island's charming coastal towns and breathtaking landscapes. Now in its twenty-first year, the Creighton University Summer School in Ireland program offers an exciting and affordable way for students to discover Ireland. The program fee includes the two 3-credit hour courses, lodging and breakfast on campus at Trinity, excursions within Dublin, a weekend study tour within Ireland, and a day trip to Wicklow.

Contact Information: For more information, contact Dr. Eileen Dugan, CUSSI Director, at etdugan@creighton.edu or Prof. Mary Helen Stefaniak at mhs@creighton.edu.



ECUADOR

May 11-June 4, 2008

SPN 428 Encuentro Hispano (6)

Study culture, history and language in Ecuador and learn about the impact of industry and tourism in the Amazon while hiking through the jungle.

Course topics may include: cultural and ethnic diversity in Ecuador: the indigenous, Afro-Ecuadorian and mestizo communities; Family and kinship patterns in urban and rural Ecuador; Male and female roles in Ecuadorian society; Education, work, and leisure activities in urban and rural Ecuador; Role of history in understanding contemporary society; Contemporary economic and political challenges.

Contact Information: Please contact Professor J. McClanahan; jose@creighton.edu. (402) 280-3868.



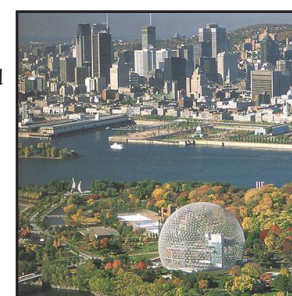
QUEBEC

May 10-May 29, 2009

FRN 527 - L'experience du Quebec (3)
FRN 412 - Advanced Written French (3)

At total immersion in the French language and Francophone culture of Canada. Students will develop advanced oral and writing skills, while exploring the language and culture through city tours, visits to museums, concerts, theater, and cinema in Montreal and Quebec. The objectives of the course are to provide students with a greater mastery of oral and written French at the advanced level.

Contact Information: For further information, please contact Professor Roy-Hewitson at (402) 280-3907, or by e-mail at LucilleHewitson@creighton.edu.



2009 Summer Travel Courses

THE NORTH CENTRAL/ ROCKY MOUNTAINS REGIONS

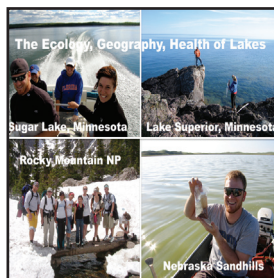
May 13 - June 5, 2009

BIO/EVS 385 Ecology, Geography and Health of Lakes (4)

A summer field course that examines lakes in the North Central and Rocky Mountains regions of the United States. This course is a combination of lectures and field and laboratory studies of the physical, chemical, and biological properties of lakes within a landscape context. Factors affecting lake water quality and ecosystem health are emphasized. The course includes field work in the glacial lakes of northern Iowa, the Minnesota Boundary Waters and Lake Superior in Minnesota. A second trip will investigate hyperalkaline lakes in the Western Nebraska Sandhills and pristine alpine lakes in the Colorado Rockies. The class will stay and work from two established field stations: the Iowa Lakeside Laboratory on West Okoboji Lake and the University of Colorado's Mountain Research Station at 9600' in the Colorado Front Range. This is both a laboratory course and a certified writing course.

Fees: Estimated travel expenses for two, eight day-long trips during the course are \$1,150 per student, in addition to normal Summer Session Tuition.

Contact information: Dr. John Schalles (Hixson-Lied, Room 437, (402) 280-2155, email JohnSchalles@creighton.edu for further information.



SOUTH DAKOTA

May 17-June 19, 2009

Note: May 17-June 12, 2009 is in the field and June 13-19, 2009 is a reading week off-reservation.

ANT/NAS/SOC 209 Qualitative Methods Social Sciences (3)

ANT/HIS/NAS 330 Museums and Social Sciences (3)

ANT/NAS/SOC 495/497 Directed Independent Study/Research (3)

HIS 585 Public History Internship (3-6)

Live at Saint Francis Mission among the Sicangu Lakota of the Rosebud Reservation while learning qualitative research methods, the anthropology of museums and/or conducting a public history internship. This program will allow you to experience every element entailed in running a small community-based ethnographic museum and equip you with both ethical guidelines and research techniques vital to anthropological fieldwork and museum maintenance. We will be hosted by the Jesuit community at St. Francis Mission and work at the Buechel Memorial Lakota Museum.

Travel Information: Several tours are scheduled during our stay on the Rosebud Reservation. Depending on participants' interests some of the possible places to visit include: The Black Hills, The Badlands, The Sandhills of Nebraska, The Pine Ridge and Yankton Reservations, The Heritage Center Museum at Pine Ridge, The Lewis and Clark Center, Sioux City, IA, W. H. Over museum, Vermillion, SD, and The Journey Museum, Rapid City.

Fees: The cost of the program (\$2,850) will cover tuition for 6 credit hours, room and board, travel (from Omaha to the Reservation and back, all tours and traveling on the reservation). Please pay a \$500 room, board and travel deposit to the Sociology-Anthropology Department.

Contact Information: Fr. Ray Bucko (402) 280-3587; bucko@creighton.edu; Mr. James T. Ault, (402) 280-2635; jt3@creighton.edu.



LONDON

June 8-19, 2009

BIO 425 Development of Biological Thought (3)

We will examine the development of the intellectual tools used by Biologists, from the roots of these tools in medieval theology and philosophy, through the Renaissance and Enlightenment periods into the modern scientific era. While we will focus on the organizing principle of biology, evolution through natural selection, other areas of the natural sciences will be included.

This course will be held in London, UK, and will highlight visits to the major scientific institutions and historical sites in the area. We will visit institutions such as Oxford University, the Royal Society of London, the Natural History Museum, and Kew Gardens. Many of these institutions were intimately involved in the crafting of modern biology, and the tours will heighten our understanding of the development of biological thought. We will also explore the context in which the innovations took place by visiting sites such as Westminster Abbey, and the National Gallery. The cost will be approximately \$3,200 plus airfare.

Contact Information: Please contact Dr. C. Brockhouse charles-brockhouse@creighton.edu (402) 280- 3393) for more details.



SPAIN

May 12-June 6, 2009

SPN 424 Encuentro Espanol I (3)

The Encuentro Español 2009 Edition is taking a group of 27 students to the cosmopolitan life of Madrid and Alicante from May 12-June 6, 2009. While in Madrid, students will take a course on "Arts and Culture" team-taught by Dr. Godón-Martínez and Dr. Santiago. After 18 days in the Spanish capital, the majority of the group will move to the Southeastern Mediterranean coast of Alicante to experience more regional aspects of Spanish life for another 10 days, while a smaller group of students will walk the Camino de Santiago from Leon and discover the Galician rural world with Dr. Conrod.

Contact Information: Dr. Frederic Conrod, 402-280-3701 FredericConrod@creighton.edu. (402)280-3868.



2009 Summer Travel Courses

EL SALVADOR

May 18-June 1, 2009

July 15-August 5, 2009

JPS/THL 341 Ecclesiology in Context: Church in El Salvador (3)

Travel to El Salvador with a Creighton class. North Americans have been learning about faith, joy and the struggle for justice from the Salvadoran Church for decades. In El Salvador, theory and concept about Church become real through the experience of learning from and accompanying others.

This course is designed to give students an in-depth and first-hand introduction to the dramatic ways that Church and society interact in El Salvador, as they struggle to find a way out of dehumanizing poverty and a brutal civil war.

Contact Information: Contact Dr. Thomas Kelly (402) 280.3734 thomaskelly@creighton.edu. Also visit the website: <http://www.creighton.edu/ccsj/immersions/elsalvador.html>.



ITALY

May 17-June 6, 2009

ITA 525 Roma (3)

If you have always wanted to go to Rome, immerse yourself in history, admire art and architecture more than 2,000 years old as well as masterpieces from the Renaissance times, this course is for you.

Imagine yourself as you set foot in the Colosseum, stand in the middle of St. Peter's Square, climb the Spanish steps, wander in the narrow streets of the popular Trastevere district. Imagine being in front of astonishing masterpieces by Michelangelo, Caravaggio, Raffaello. Live life as the Romans do. Sip espresso or cappuccino. Enjoy Roman cuisine. Find fantastic deals in the open markets.

Contact Information: Contact Maria Teresa Maenza-Vanderboegh, Ph.D. at (402) 280.2759 or mtmaenza@creighton.edu.



FRANCE

May 18-June 7, 2009

FRN 525 Paris, Ville du Monde (3)

Travel to Paris with David Vanderboegh, Ph.D., Assistant Professor of Modern Languages, and learn about the history of Paris, from its origins as a small fishing village to its contemporary status as one of the world's greatest cities. Join in walking tours of the city with visits to the Cathedral of Notre-Dame, the Louvre Museum, the Pantheon, and the Defense quarter. Explore lesser-known sites such as the Canal Saint-Martin, Parc des Buttes Chaumont, Catacombs, the newly revitalized Villette quarter. Excursions to sites such as the Chateau de Versailles and Vaux-le-Vicomte. Day trip to the seaside resort town of Deauville in Normandy. The course offers the novice a comprehensive introduction to the history of Paris, and more advanced students the opportunity to concentrate on a particular topic of interest. There is an English track and a French track. Intermediate to advanced proficiency in French is required to register for the French track.

Contact Information: Contact Dr. David Vanderboegh at davidvan@creighton.edu or (402) 280-3033.



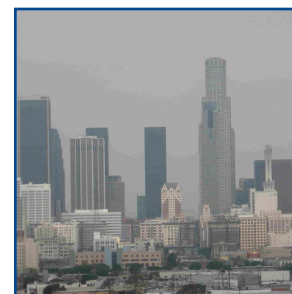
LOS ANGELES/LAS VEGAS

May 10-24, 2009

BUS 479 Business in Las Vegas and Los Angeles

The 2009 Las Vegas/Los Angeles summer class examines how business transforms culture and society in two case study cities: Las Vegas, home of the hospitality and entertainment industries, as well as Los Angeles, home of the fashion and movie industries. We meet with many local civic and business leaders, regarding issues including water resource problems, transportation, infrastructure, development, philanthropy, environmental preservation, historical preservation, arts, religion, and business expansion. The summer 2009 class will be especially focused on recent economic downturns and their effects on these two cities.

Contact Information: Contact Dr. Gustafson College of Business Administration (BA 423); andrewgustafson@creighton.edu. Office Phone: (402) 280-3172. <http://www.andygustafson.net/>



Independent Study Program (ISP)

Creighton students are eligible to register for correspondence courses in Creighton's Independent Study Program. These are undergraduate courses that the student can complete at home. Correspondence with the instructor is key to receiving the personalized instruction that is ordinarily given in the traditional classroom.

All ISP courses are developed by Creighton faculty and maintain the same high degree of instructional quality that is maintained in the on-campus courses. They are noted by the "IS" section letters.

Tuition is \$894 per course, with the exception of Nursing 223 (2 credits) which is \$596. Textbooks and supplementary materials are additional. Students may register for ISP courses at any time. Written permission of your dean is required for non-University College students. Do not include these courses on registration forms for the Summer 2009 Semester. Call the Independent Study Program office (280-2424) for more information or to register. For more information visit <http://www.creighton.edu/isp>.

The following courses are available:

ANT 111	Human Variation (3)*	Dr. Suzanne Baker
ENG 120	World Literature I (3)*	Dr. Mary Longo
ENG 121	World Literature II (3)*	Dr. Thomas Kuhlman
ENG 150	Rhetoric & Composition (3)*	Dr. Robert Whipple
HIS 101	Modern Western World (3)*	Dr. Elizabeth Elliot-Meisel
HIS 103	The Asian World (3)*	Dr. Christopher Gerteis
HIS 107	Middle Eastern World (3)*	Dr. John Calvert
NUR 223	Nutrition (2)	Ms. Mary Watson
PHL 107	Introduction to Philosophy (3)*	Dr. Eugene Selk
PHL 320	God and Persons (3)*	Dr. Eugene Selk
PSY 111	Introductory Psychology (3)*	Ms. Debra Schwiesow
PSY 341	Infant and Child Psychology (3)	Ms. Debra Schwiesow
PSY 375	Marriage and Family Values (3)	Ms. Debra Schwiesow
THL 100	Christianity in Context (3)*	Sr. Joan L. Mueller, Ph.D.
THL 209	The Life of Jesus (3)*	Ms. Gail Risch
THL 325	Catholicism (3)*	Sr. Joan L. Mueller, Ph.D.
THL 335	Jesus Christ: Yesterday Today (3)*	Sr. Joan L. Mueller, Ph.D.

*College of Arts and Sciences Core Curriculum Course

Summer Residential Programs for Gifted Middle School & Senior High Students



Ad Astra

Completing 6th, 7th and 8th Grades
Two Sessions: June 7-13 or June 14-20

A one-week, on-campus program designed to provide both academic and social learning opportunities for gifted middle school students. Students attend selected courses taught by Creighton University faculty and/or professionals in the Omaha area. In addition to coursework, field trips, and social activities are also incorporated which provide further learning opportunities and fun!

Arete

Completing 9th, 10th and 11th Grades
One Session: June 21-26

An on-campus program for gifted high school students. Unique courses taught by Creighton University faculty and/or professionals expose students to new learning opportunities to get acquainted with other academically motivated students. Recreational activities and field trips are also planned.

For more information about these programs contact:

Im Calvert, Assistant Director of Summer Sessions
Creighton University / Summer Sessions
2500 California Plaza • Omaha, NE 68178
(402) 280-2843 • (800) 637-4279
Fax: (402) 280-2423
imcalvert@creighton.edu

