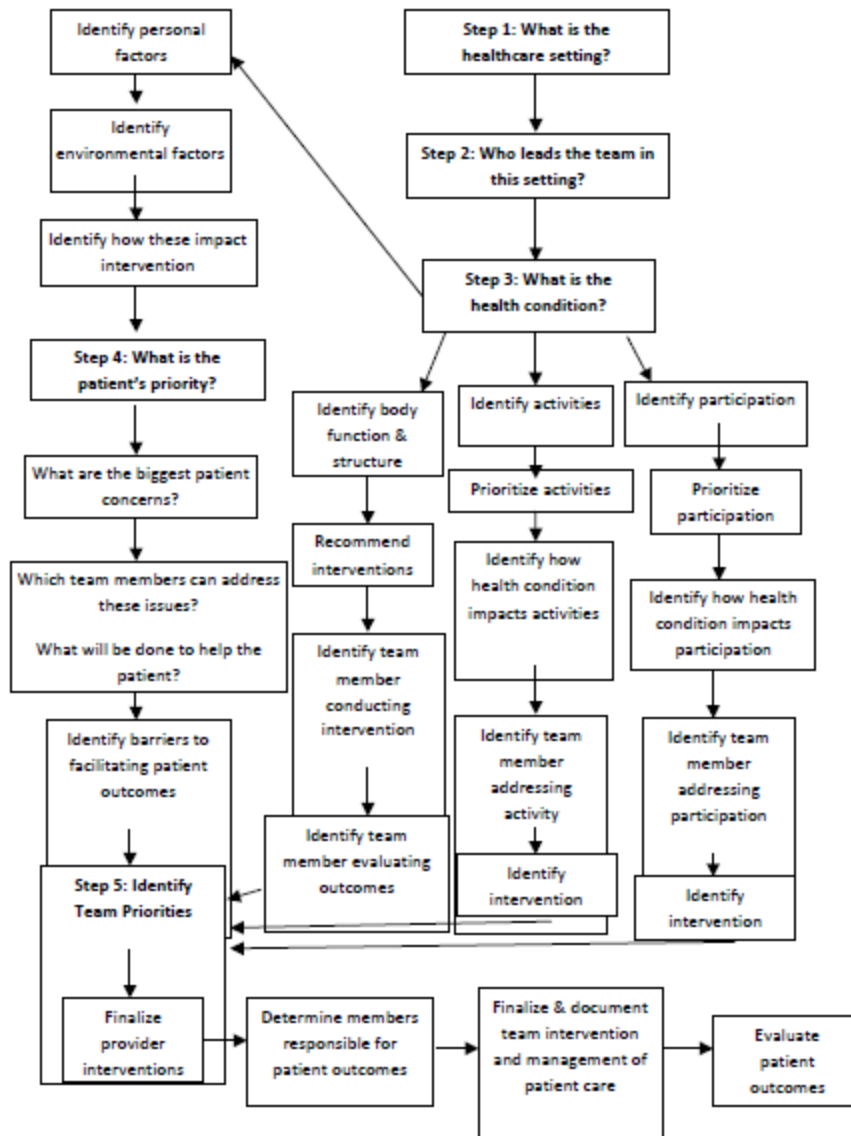


Figure 1
Interprofessional Team Reasoning Framework



Definitions of Terminology:

- Body function/structure – anatomy and physiology of the body parts (i.e., signs and symptoms, lab values, test results/diagnostics, medications, etc.)
- Activities – activities of daily living (i.e., dressing, bathing, etc.)
- Participation – roles like work, parenting, etc.
- Personal factors – factors like gender, age, education, social background, profession, etc.
- Environmental factors – social norms, culture, politics, etc.