



# News from Facilities Management

Vol. 7 Issue 1

February 2011

*Think spring. The groundhog may shorten winter but it is still too long. Daylight savings time comes in mid March so there will be more daylight to melt the snow (Just kidding).*

*The excitement continues at Creighton. Program Prioritization is continued to be reviewed. The steering committee has completed their effort and delivered a several hundred page document to Fr Schlegel for his deliberation. The outcome of the process will be a stronger more efficient University. We will all learn more about the process in the next few weeks.*

*Fr Lannon has been on campus a few times meeting with his cabinet and others. Perhaps you attended a town hall meeting with him some time back. We can all look forward with some sadness and some question as Fr Schlegel moves into another phase of his life and Fr Lannon takes the helm of the Creighton ship. Our work with Fr Schlegel has been rewarding, exciting and perhaps exhausting. Service delivery by each of you has been very well accomplished. There is no reason for us to change with the new president as we continue to be ambassadors for the University. I understand Fr Lannon will be here in later July and his inauguration will be at the end of September.*

*Deferred maintenance has become a topic of interest. John Wilhelm has elevated the subject to the Buildings and Grounds Committee of the Board of Directors. Brian Besack and Deb McAtee are well engaged in a new way of presenting the information. Our previous facility audit is being used as a resource along with lots of conversation, building forensics and writing by Brian. The end result will be an inclusive report that crammed with dynamic information about the building needs. The goal is to update one third of the report annually so information and building needs stay current. The report will become a budgeting tool and a planning tool used by the leaders of the campus.*

*The move to amore sustainable campus remains our focus. Being ever aware of how to reduce the carbon footprint is a role Facilities Management can rise to as a leader. Some examples of being sustainable are*

- The paint shop preparing containers for outside recycling that is picked up by the Grounds shop daily as part of the daily trash rums all making Pete Maas's single stream recycling program that much better and displaying great team work.*
- Jessica Heller's effort at getting Creighton declared an arboretum as well as recognized as a treeCampus USA places an accent on the trees across campus.*
- John Schwede and Jessica a Heller working with people across campus on the community gardens is an effort the involves many including the Ground Shop in some fence repair, the Paint Shop in signage, the Building Engineer Shop in installing a water source.*
- Bikes on campus are becoming more plentiful. George is developing a bike play day into the Earth Day celebration. The Carpenters and Building Engineers are developing a space in the former Modern Equipment headquarters building for long term bike storage. Jessica Heller and I are involved with planners on how to have an even stronger bike program on campus.*
- Ken Juhl is one of many Facilities Management folks involved on committees that expand the efforts to make the campus more sustainable. Ken is working on car pooling.*
- George Tangeman is in front of several energy conservation measures including another contest among the residence halls that measures success in saving energy. Energy conservation will be the theme for Earth Day later in April.*
- Coale Johnson will soon convene training programs designed to get us started on making existing buildings LEED certifiable.*

*Our efforts to be a more green campus are limited only by our imagination. The good ideas that you share become part of the way we do business if it is buying more electric powered golf carts or working on alternative energy projects. Keep thinking and communicating.*

*It is important to note some successes over the past three months. I am sure I will miss some*

- 1) The Christmas potluck was as much fun as we have every year. I really enjoyed the burritos but I missed Maria Jerrell's lintel soup. Thanks to the Paint Shop for the great event. It was right that we sent school supplies to Chris*

Casey for his distribution in an orphanage in Afghanistan. Your contributions make a difference in the lives of those children.

- 2) Justin Burgett is working on several safety training aides that include a poster display and detailed topical information for safety training can be found in growing subject matter on the EH&S website.
- 3) The holiday shut down seems to have gone very well. The level of communication and cooperation produced a significant effort in reducing energy consumption. George is still tabulating the final numbers and calculating the money saved. Kudos to all that worked between Christmas Eve and Jan 2. The effort will be the model for the future.
- 4) Snow removal always goes well and this year is no exception. The Grounds Shop, with Ray at the lead is doing less work to try finding the balance between safety and balancing the budget.
- 5) Almost as old business but the conversion to AiM is remarkably smooth. I continue to hear how well the system works because of the efforts by Maria Jerrell and Lindsay Lewis.
- 6) A safety study by an outside consultant was conducted within Facilities Management. Ken Juhl escorted the consultant through many work areas. The final report noted safety infractions but nothing that can't be corrected. Well done!
- 7) Pat McCluskey is taking photos of buildings using an infrared camera to identify building heat leaks. The Carpenter Shop is busy sealing building envelopes to keep the heat inside.

There are studies of facilities underway. Michael LaCroix and Brian Young are co-chairing a group considering how to update the Reinert Alumni Library. The study will set the stage for further architectural design and help as a fund raising tool. A similar study is being undertaken by the Dental College as they begin to consider a larger facility and a larger class. These two projects are not in the immediate capital budget. The studies are the first step in getting into the budgeting process.

In closing, you have just read where many people are conspicuously involved with making Facilities Management a positive organization. There are many times that list of people working just as hard. Thanks to each of you for all that you do. Through all the work, and there is a lot, we do our work safely and few minor accidents. Be aware of your surroundings and think about the next steps you will be taking to prevent that accident from happening.

Keep up the great work.

Lennis

# SAVE THE DATE:

*Facilities Management  
Information Sharing Session  
Wednesday, March 9, 2011*

*Session 1: 9:30 - 10:30 a.m. - Harper Auditorium  
Session 2: 6:00-7:00 p.m. - Boyne 137*



# CREIGHTON UNIVERSITY'S ECONOMIC IMPACT ON THE COMMUNITY

Creighton University commissioned Ernie Goss, Ph. D., the University's MacAllister Chair and Professor of Economics to update the university economic impact study. This very interesting report has been shared with several civic organizations including the Chamber of Commerce, Rotary, and others. The information reflects the many ways that Creighton contributes to its community, state and beyond. Below are a few highlights from the study.

- Creighton is a major business enterprise in Nebraska. During 2009-2010, Creighton University's economic impact to the state was **\$787.5 million**.
- During 2009-2010, our operating budget totaled approximately \$400 million and the University generated \$38.2 million in state and local taxes. Our 7,600 students spend some **\$106 million in the state** on products and services ranging from rent and food to clothing.
- The University's job force of 3,395 makes it one of the 25 largest private employers in the state and one of the 13 largest Omaha employers. It is estimated that Creighton spending also supports another 4,536 full-time equivalent jobs in Nebraska.
- Creighton students, faculty and staff are involved in more than 800 service programs locally, regionally, nationally and internationally last year, contributing more than 295,000 hours to the needy.



## Extreme Cold Temperatures and Buildings

Cold weather has returned, so please help in making sure all windows and doors to the outside are kept closed to avoid freezing pipes and building heating coils.



## Smoking Cessation

Creighton University is proud to be a smoke-free campus. Smoking cessation benefits are available to employees and spouses and now there is new increased support. There are several classes and seminars offered as well as pharmacotherapy (nicotine patches/gum, Zyban, Chantix), both of which are covered in cost by the University for attending classes.

Visit the [\*\*Tobacco-Free You\*\*](#) page for further information.

# ***Campus News from Father Schlegel***



***January 12, 2011***

The Christmas holidays are behind us, winter is upon us; the campus is again animated as a new semester begins. This also commences my last semester as president of Creighton. It is my intention to keep these updates meaty and focused so you all know what is happening across the campus. These last months of transition will be a time of engagement and action not inertia and stasis. There is much to do. This update contains lots of information that will allow you to better tell the Creighton story.

**PROGRAM PRIORITIZATION PROCESS** - Since early November, the Steering Committee for the Strategic Program Prioritization process has reviewed the documentation created this past summer and fall for over 800 programs. I applaud their dedication and determination these past two-and a-half months to complete such an important undertaking for the University within the timeframe expected. The Steering Committee will be closing out their work on January 17<sup>th</sup> with the delivery of their report to me. I intend to carefully study the Steering Committee's recommendations and will consider advice and counsel from a variety of constituents before making final decisions. I expect to complete the process by early March.

**CAMPUS SAFETY ASSESSMENT** - Recent events in the Omaha area and even near our campus neighborhoods remind all of us that we must be aware of our surroundings. I wish I could say that Creighton is immune from violent and criminal acts, but what campus, neighborhood or community is today? Please be mindful of your personal safety as we start the new semester in wintery weather conditions and shortened daylight hours.

Campus safety is a high priority and I am always tuned into concerns from students, faculty, staff and others about safety related issues. To that end, I am sponsoring a campus safety assessment that will be conducted by an independent organization. I view this as a healthy examination of our Public Safety services and the various security measures and practices we have in place across the campus. The assessment will be completed during the spring semester.

**FINANCE AND BUDGET** - Although the overall economy is showing signs of improvement, the outlook for higher education remains challenged. Significant improvement, specifically on University expense structures, is required to achieve a balanced budget for 2011-2012. I am confident that by working together on initiatives such as program prioritization, the Xerox printing project and a fresh look at how we budget, we will achieve major contributions. It is my expectation that we will achieve this target.

In addition, to ensure that Creighton remains vibrant and strong over the long term, we will need to think differently about how we do our work. Process improvements, including simplification, more standardization and leveraging of technology, can enable and enhance Creighton's continued academic excellence. Increased collaboration and cooperation across departments and our ability to be open-minded and adaptable will be invaluable to our success. This will be one focus of my last Founders' Day Convocation.

**BLUE WHITE AND YOU**, the faculty and staff annual giving campaign is in full swing. The continued generosity of our Creighton family sends a powerful message that we are united in support of our students and our mission. In an environment on change, faithful annual giving affords Creighton the flexibility to meet challenges as they arise and to remain accessible and affordable to talented, deserving students. The care and concern and the manner in which our faculty and staff live out our Jesuit, Catholic mission every day, help prepare our students for lives of professional distinction, ethical leadership and involved citizenship.

So, as you see, there is much happening. While the snows may temporarily cover the campus, the reality of the university is alive, vibrant and forward looking. I am personally energized by the prospects of getting the program prioritization steering committee's recommendation on January 17<sup>th</sup>. The process has been engaged, focused and university-wide. Like all of you, I do not know what to expect, but I assure you the results will have a positive impact on the quality of life, performance and financial status of the University.

Welcome to all of you as we begin a new semester, and indeed, a new chapter in the history of Creighton University. As always, you and your family remain in my prayers.

John P. Schlegel, S.J.  
President

# Sustainability at Creighton

Mary Duda

There are a lot of fun programs going on at Creighton this spring that help promote sustainability.



**Earth Day** will be celebrated at the end of April in Skutt or on the mall (weather permitting). Festivities will include a “Bike Play Day”, George’s famous popcorn machine, information on various initiatives, and much more. Stop by to say hi and pick up some information.

Two **community gardens** are being planned. One, called Ignatian Gardens, will be for staff, faculty, and students to grow vegetables in a small plot. If you’re interested in having a plot, keep your eyes peeled for more information coming soon. A second garden will be installed near Rigge; this one will be for students and staff to learn more about organic gardening.



A group interested in promoting **biking** is working hard to make Creighton more bike-friendly, including indoor bike parking, bike maintenance workshops, and more.

**Carpooling** is another program that is taking off. If you’re interested in finding a carpool buddy, please go to <http://www.metrorideshare.org> and sign up! You can limit your search to only other Creighton people, nonsmokers, etc.



## Landscape News

Jessica Heller

### Creighton and Community Gardening

Throughout the winter months Facilities Management, the Wellness Program, Biology Department, and Creighton Students Union have been planning the next phase of Creighton’s community gardening effort. As soon as weather permits we will begin making improvements to last year’s garden located on North 18<sup>th</sup> Street between Burt and Cuming (now named the Ignatian Garden) and will break ground at the new student-focused garden in the lawn area west of the Rigge Science Building.

While similar in appearance, the two gardens will differ somewhat in their purpose. The Ignatian Garden will provide garden space that can be leased by Creighton students, faculty, and staff to grow their own crops. The Biology Department’s garden at Rigge, on the other hand, will be an opportunity for Creighton students to learn about sustainable agriculture (on a very small scale) through a cooperative effort.

Integral to the success of both gardens is an educational component being developed by the Wellness Program that will explore topics ranging from the health benefits of growing your own organic produce to the “how to” of growing your own food. Want to be involved? Look for garden-related announcements in Creighton Today and JayNet News as we get closer to spring.



Did you know that the average person makes approximately 300 food decisions in a day? It's no wonder eating right and maintaining a healthy weight has become such a puzzle! Well don't scratch your head any longer!

The FUEL program is here to help you learn how eating the right foods can radically reduce your chances for many diseases while transforming your overall health. This 10-week journey will provide you with the knowledge and support you need to develop a plan for a leaner body filled with increased vitality and energy for life!

This opportunity allows for you to get support and education when and where you need it. From webinars that you can watch at any time day or night from any computer to tracking materials that provide accountability to work on skills for healthier behaviors. From individual coaching sessions that help you focus in on what **you** need to work on to reach your goals to group workout training sessions designed for men only. You can't go wrong taking part in this program!

**OPTIONAL: this program provides a variety of ways to change your life. What and how much you take advantage of, is up to YOU!**

Women Only Training Sessions at the FitNest in the Harper Center take place at 7:00 - 7:45 a.m. on Tuesdays and Thursdays (An additional class could be added if registration warrants it.) Certified trainers incorporate the aerobic training that most women like but also add the all important body shaping and toning that is essential for proper clothing fit, great posture and calorie burning muscle that we lose as we age. All levels of experience are welcome!

Chat Sessions take place in the Skutt Student Center, on Thursdays at noon.

Check out the following link to the program flyer, program plan dates and the registration link here to ***Fuel Up. Energize Life!***

<http://www.creighton.edu/health/wellness/fuelprogram/index.php>

Dawn Obermiller, MA  
Wellness Coordinator for Creighton University  
Room 219, Kiewit Fitness Center  
402.280.5721



# Environmental Health & Safety

John Baxter

Currently in EH&S we are moving some training from the classrooms to the computer. Online training will allow our employees to take the training at convenient times that will not interfere with normal work schedules. Justin Burgett is leading this project. To date two Modules have been put on line. A third and fourth module should be online and ready to use by the end of school.

EH&S has also expanded the toolbox talk sessions. Each shop will all have some that they attend alone and others will be given to all of the shops at the same time. This will allow the training to be focused more on each shop as opposed to a general topic to talk about each month. The complete list of scheduled toolbox talks is included on the next page.

One of EH&S's primary duties includes the proper disposal of wastes. During the past two waste pickups a total of approximately 4500 pounds of hazardous waste was removed from the campus by our hazardous waste contractor Veolia. This waste was generated by a variety of sources including research labs and teaching labs. What many of you may not know is some fluorescent bulbs, aerosol cans and other common items you may throw out legally at home, Creighton has to handle as hazardous waste. This is why when we talk to you about what to look for and how to label containers for these items it is so important. One mislabeled container could cost the University several thousand dollars during the next EPA inspection.

**Safety Thought** - As we are now in the winter months I encourage you to take notice about what you wear on your feet when you come to work. While many of us have our favorite comfortable shoes that we want to wear at work, they may not be the best footwear to keep you on your feet when you're trying to get to work. Think about what you have to walk through to get to your assigned locations. The Grounds Department does a good job of clearing off the ice and snow from our walkways. However, they can not always get to areas that we may have to use before we come in or they may freeze back up after they have gone home for the day. Make sure the footwear you wear to work is the best choice to cross that small patch of ice that you might have to cross. If you need to, wear a pair of boots to get to your work site and then change to your work shoes when you get there. We also need to walk carefully across suspect areas and take alternate routes if you think there may be ice in your path. A few extra minutes to change your shoes or few extra steps could save you a lot of pain and lost time at work. Let's try to keep this new year safe.

## Tool Box Talks for Facilities Staff

### **Engineers, Painters & Carpenters**

Aim Training (January)  
Job Hazard Analysis (February)  
Arc Flash / Electrical Safety (March)  
Universal / Hazardous Waste (April)  
Hearing Protection (May)  
First Aid (June)  
Confined Space (July)  
Lock Out / Tag Out (August)  
Manlift Safety (September)  
Fire Safety (October)  
PPE / Weather Related Gear (November)  
Holiday Stress (December)

### **Custodial Services**

Slips, Trips & Falls (January)  
Back Lifting Safety (March)  
HAZCOM (May)

Lock Out / Electrical Safety (August)  
Lab Safety (July)  
Fire Safety (October)  
Holiday Stress (December)

### **Landscape Services**

Slips, Trips & Falls (January)  
Job Hazard Analysis (February)  
Bugs, Critters & Plant Safety (March)  
Non Powered Hand Tools/ Lawn Equipment Safety (April)  
Hearing Protection (May)  
First Aid (June)  
Heat Stress (July)  
Lock Out / Tag Out (August)  
Back & Lifting Safety (September)  
Fire Safety (October)  
PPE / Weather Related Gear (November)  
Holiday Stress (December)



## **News from Planning and Design: Fran Angeroth**

### **A quick look at a few of the current approved projects:**

- Boyne 324 was completed for some renovations to become a lab again.
- Kiewit Fitness Center – renovation of the 1st floor restrooms to meet ADA should be completed by the publishing of this news letter.
- Bids were received and awarded to caulk the exterior of the Cardiac Care Center – now we wait for spring.
- Reinert Alumni Library the roofers began on the roof and accomplished the re-roofing on the worst section before the weather caught us – now we wait for spring.
- Brandeis dining hall upgrade architect has been selected and designs are in progress.
- Gallagher Hall first floor received new wallpaper and paint over the holidays.
- Gallagher Hall over semester break also received new sinks, faucets, p-traps and angle stops.
- Design and specification for the Heider Hall safety upgrades are in progress. The work is due to start late May and complete before school starts in the fall.

There are a number of other projects at this time in preliminary discussions, design and estimating, pending approval or scheduled for work at a later date:

- Bids went out for turf replacement for both baseball and softball. Review is in progress.
- Evaluation of bids is progressing to replace existing flooring at the Cardiac Care Center, ground floor.
- Bids are out to four local air filter companies for the annual purchase of filters for the mechanical systems in all buildings.
- Replace the carpet on 16 steps at Creighton Hall main staircase.
- Remodel room 270 in Criss.
- Psychiatry clinic at 35<sup>th</sup> and Dodge – ADA ramp west side, new west doors and card access.

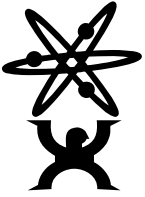
We are planning for our 10<sup>th</sup> Annual Contractor's Coffee Break for March 8<sup>th</sup> at 7:30 a.m. It is our opportunity to go over new procedures, new or revised regulations or processes with the contractors who perform construction services on the campus.



### **Did You Know?**

**Approximately 141 million Valentine's Day cards are exchanged annually, making Valentine's Day the second most popular card-sending holiday after Christmas.**





## Energy Management

George Tangeman

Facilities Management Engineering and the Energy Management Department worked over the Holidays monitoring building temperatures and control systems and turned down temperatures in all unoccupied buildings to 58° and 60°F. Turned off all lights and appliances in unoccupied spaces and used unoccupied space temperature set backs in other places to conserve energy.

The total electrical usage was down by an estimated 17,620 KW from last year during the same time period for the unoccupied Residence Life buildings and an additional estimated 60,500 KW for the rest of the unoccupied campus buildings.

Facilities met with Residence Life RD's last week to set up an Energy Saving Contest from March 14<sup>th</sup> until April 15<sup>th</sup>; results will be announced in April at the Earth Day celebration at the Student Center. (This years date to be announced because April 22<sup>nd</sup> lands on Good Friday) This year's theme is Energy Conservation; we plan to have displays and speakers from MUD, OPPD, ECHO Electric, and our own Horticulturist Jessica Heller.

We have been selected as a beta site for a new type of condensate meter. Work has begun to install the meter in KFC and it will allow us to monitor our steam usage from the Energy Management system control computer. When installed we will be able to see real time changes to the usage when we make changes to the buildings heating system, allowing us to track and conserve energy.

The Energy Awareness Committee members along with Facilities second shift Engineers and Custodial employees continue with their quest to conserve energy by turning off lights, closing windows, reporting running water and dripping faucets, closing fume hood sashes, and shutting doors in unoccupied spaces after hours, and the lists they turn in are growing. There have been many lighting Sensor Switches installed to turn off lights across campus and we've identified many more areas that could use them. We are currently working on possibly putting them in KFC entrance and lower level hallways and throughout the entire Cardiac Care facility.

Much work has begun with sealing building envelopes; a new Inferred image camera was purchased and training was provided. This allows the operator to locate and identify areas that are wasting energy around doors, windows, and roofs. It also allows the operator to capture images of "Hot Spots" in electrical panels, and electrical connections.



## PRESIDENT'S DAY - MONDAY, FEBRUARY 21

Presidents' Day dates back to our founding father and first President, George Washington. Washington was born on February 22, 1732. On his birthday in 1796, when Washington was in his last full year as president, the day became the holiday known as Washington's Birthday. However, Americans didn't observe this holiday until 1832, 100 years after his birth.

Abraham Lincoln was the next President to gain reverence similar to Washington. Born on February 12, 1809, Lincoln's birthday was first celebrated in 1865, the year after he was assassinated. Although his birthday was not honored as a federal holiday like Washington's, many states adopted it as a legal holiday.

In 1968, Congress passed legislation placing any federal holiday on a Monday, including Washington's birthday, to create a three-day weekend. In 1971, President Richard Nixon combined Washington's and Lincoln's birthdays into Presidents' Day. It would be celebrated on the third Monday in February, regardless of which day it fell on. Presidents' Day is now viewed as a holiday that pays tribute to both Washington and Lincoln, as well as all those who have served as president.

## SERVICE AWARDS:

The Annual Service Award Luncheon was held on Tuesday, December 21. As part of this traditional celebration, 23 Facilities Management employees were recognized for reaching important service anniversaries. We express our congratulations to the following individuals and say thank you for your commitment and dedication to the success of Creighton.

### 35 YEARS

JACK MANZER

### 25 YEARS

KHAMPHET VORASANE

### 20 YEARS

RAY MADEJ  
DEB MCATEE

### 15 YEARS

ED GRUDLE  
MATT MCKENZIE  
KEVIN STIRLING

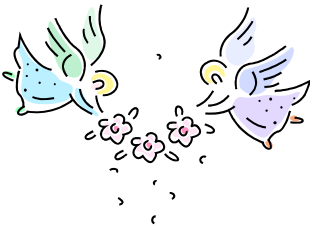
### 10 YEARS

MARCELA BARRERA  
MARTINA CASTANEDA  
TAMMY CLAWSON-DRITSCHER  
VIOLA HINTON  
LARRY MORGAN  
HUMBERTO ORTIZ DELGADO  
LENNIS PEDERSON  
ELVIA REYES  
MARIA SANCHEZ  
JOHN SCHWEDE

### 5 YEARS

TAMMI DRAKE  
GUY FELLOWS  
GREGORY GOSSETT  
KEN JUHL  
ELEUTERIA NARVAEZ  
DUSTIN VICE

## *2010 Holiday Spirit Project Update*



Facilities Management 2010 Holiday Spirit Project was sending school supplies to the children in Afghanistan, where our own Chris Casey is stationed with the Iowa National Guard.

We collected \$127.00 and several school supplies items. Fran Angeroth and Jill Dickey will be packaging up the items and sending them off to Afghanistan soon.....



**Welcome to the new employees that joined us in November, December and January ~**

#### **Custodial Services:**

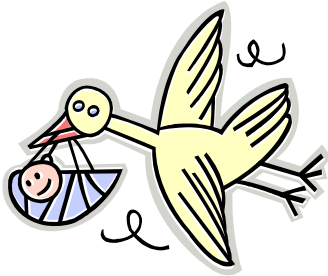
- **LeRoy Janis** has a Bachelor degree in Studio Art from Creighton and joined us as a custodian in the Ryan Center on December 13. LeRoy is single and enjoys movies, music and of course art.
- **Milton Kyaw** is the new floor technician in the Criss Complex. Before joining us on January 3, Milton worked at International Games, Inc doing floor work. He is married and has 3 children: Richard (18 years old); Ramond (16 years old); and Blessing (13 years old).
- **Shan Labya** is the new custodian in the Harper Center and started working with us on January 3. He is single and enjoys watching and playing soccer. Shan is the brother of Roibu Labya and the brother-in-law of Zautu Kadaw.



## **Inclement Weather**

The **official** means of notifying Creighton students, faculty and staff of a weather closing or delay is the Weather Hotline at 280-5800 and the CUAAlert system. The Weather Hotline is updated by 6 a.m. on the business day in question. If the hotline is not updated with a message or you do not receive a CUAAlert, the University is **open**. If you are unsure of the situation, please contact your supervisor.

To sign up for CU Alert, visit the Public Safety Homepage or ask your supervisor for assistance. You can be contacted by the CUAAlert system on a personal cell phone, home phone, and/or email.



***Congratulations** to Andrew Johnston and his wife on the birth of a baby girl, Evelyn Claire, on January 28. Andrew works on the Recycling team.*



RecycleMania!, a national recycling competition among institutions of higher learning, starts on Jan. 23. There is a two-week “warm up” period and then on Feb. 6 the Real Deal starts. At Creighton University, we have an average weekly total of 5,800 pounds of mixed single-stream items and a weekly average of 2,665 pounds of cardboard. Let's top that figure by a wide margin this year! We have challenged the other nine schools of the Missouri Valley Conference to join us in the competition this year so let's give this our very best effort. **Go Jays!** Remember: Acceptable materials for single-stream recycling are any kind of clean paper including envelopes, magazines and newspapers, and any kind of cardboard, clean metal or plastic with the exception of plastic bags. Unacceptable materials are any form of food or liquid, tissues or paper towels, plastic bags, glass or Styrofoam, and any kind of chip or candy wrappers. For more information about the competition, please visit [www.recyclemania.com](http://www.recyclemania.com).



## PROJECT HOMELESS CONNECT Friday, March 25, 2011

Go to <http://www.creighton.edu/ministry/ccsj/phco/volunteerregistration/index.php> to register for the Friday, March 25 event at Creighton University.

### **What is Project Homeless Connect Omaha?**

Project Homeless Connect is a one-day event that serves as a one-stop shop, connecting homeless individuals to needed services, including: housing, healthcare, legal resources, employment counseling, haircuts, Social Security, dental care that has led to 170 sets of dentures, and more. Last year almost 500 guests connected with significant services at Creighton's Kiewit Fitness Center assisted by over 700 volunteers.

Building on the last three year's success, on Friday, March 25, 2011 from 8:30 am – 2:30 pm, with the support of Creighton President Fr. John P. Schlegel, S.J., Creighton University will again host Project Homeless Connect Omaha. The opportunities to engage volunteers, build community, grow research and evaluation efforts and ultimately respond to the homeless in Omaha underscores the value of this partnership.

### **Creighton Community Opportunities to Volunteer**

There are many opportunities for **Creighton students, staff, faculty, alumni and friends** to volunteer. General volunteers are needed for set up, clean up, greeting, directing, registering, serving food, or various other positions to help the day flow. Most volunteers will serve as "Navigators" by helping our guests to fill out a basic in-take form and by staying with our guests through the process of accessing professional services offered that day. We also need healthcare professionals to offer their skills (registration information provided on the website). You can sign up online to help in the morning, afternoon, or all day.

The University encourages employees to participate as a volunteer for Project Homeless Connect. It is important, however, that staff obtain prior approval from their supervisors and make arrangements to take vacation, unpaid leave, or managed time (start early/leave late) to ensure departments have necessary coverage to conduct business.

For more information on Project Homeless Connect Omaha, visit: <http://homelessconnectomaha.org/> or <http://www.creighton.edu/ministry/ccsj/phco/index.php> (including video reflections). Contact Ken Reed-Bouley at the Creighton Center for Service and Justice with questions at 280-2754 or [kreb@creighton.edu](mailto:krb@creighton.edu).

Navigator registration will be open at <http://www.creighton.edu/ministry/ccsj/phco/volunteerregistration/index.php> through Monday, March 14th or until volunteer capacity is reached, so please register ASAP.

John P. Schlegel, S.J



## Recycling Program

Peter Maas

The Hixson-Lied Building has now been converted to the single-stream recycling method! We learn a little more each time we convert a building and this time was no different. We had a few minor glitches but they are now corrected and we learned some good lessons from them. We are going to be converting the Rigge Science Building next, probably in the next few weeks.

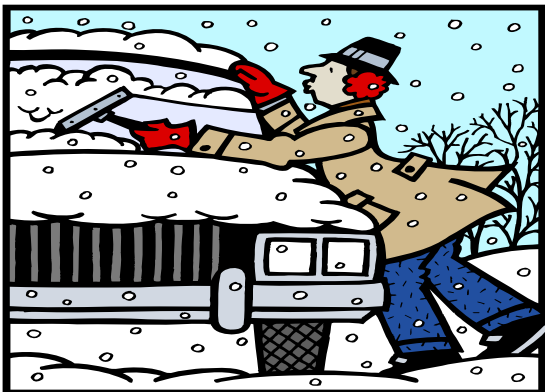
Our outdoor recycling continues on with mixed results. We are trying to come up with a better way to mark the recycling bins so people do a better job using the right can. We gladly take suggestions, just in case you have a good idea about how to improve the signage on the outdoor bins. We also have three more outdoor bins to put out so if you have been thinking that a particular outdoor spot on the campus should have a recycling bin, let us know and we will take a look at it. And thanks again to the Grounds crew for checking the cans every day and emptying them when they get full!

RecycleMania! starts on February 6 this year and ends on April 2. The two weeks before the official start will be a "practice" session to get any kinks worked out of the system. Posters for the competition have already been distributed to all the residence halls and should be posted on every floor. By the time you read this there should be posters on most of the bulletin boards around campus also. In the week before the official start we will be reminding people of the competition with another bulletin in Creighton Today, a JayNet posting, and emails to the Sustainability Committee and the Green Jays. Please refer to the following web site for more information: [www.recyclemania.com](http://www.recyclemania.com).

The Single-Stream Recycling Conversion Advisory Committee (SSRCAC) had its first meeting recently and came up with some good ideas, including getting pictures up on web pages that show what is and is not recyclable. (We are looking for a better [shorter] name for the committee, by the way.) This will come in handy for when people aren't sure if an item is recyclable. Hopefully people will Bookmark the site to make it easier to access. We are also going to start a monthly update feature, kind of like this article, but aimed more at the general population of the campus. There is always room on the committee for people with ideas, by the way. Please contact me if you are interested.

As always, we are looking for ideas on how to expand and improve our recycling program. If you've got ideas, please contact me at [petermaas@creighton.edu](mailto:petermaas@creighton.edu).

*Keep recycling – it really does benefit everybody!*



## Driving: WINTER FOREWARNINGS

As winter temperatures plummet, danger climbs behind the wheel. Be prepared for road conditions that lead to hazardous driving:

1. Before you drive, check news reports for weather hazards. You may decide that not driving is your best choice.
2. Know your route in advance. Getting lost in bad weather is asking for trouble.
3. Choose a route less traveled. Fewer vehicles reduce risk of collision especially when roadways are slick and visibility is low from heavy snow or rain.
4. Drive slower than normal when risks are high, to help avoid abrupt actions or sudden braking.
5. Carry a travel rescue kit (year round) that includes a cell phone, water, and blankets.

*Tip: Don't be overconfident driving a 4-wheel drive vehicle, which still required caution and won't perform any better than regular rigs on slippery surface.*

Following are the remarks made by Creighton's president, the Rev. John P. Schlegel, S.J. at the University's celebration opening a weeklong series of events celebrating the life of the Rev. Martin Luther King, Jr.....



**Martin Luther King, Jr. Celebration  
Creighton University  
January 17, 2011**

GOOD AFTERNOON. THANK YOU FOR JOINING US AT THE ANNUAL CREIGHTON UNIVERSITY MARTIN LUTHER KING, JR. MEMORIAL CELEBRATION. A SPECIAL WELCOME TO TODAY'S GUESTS AND CONGRATULATIONS TO OUR AWARDEES.

I want to give special kudos to Mr. John Pierce and the entire Martin Luther King, Jr. planning committee.

This is my eleventh Dr. King celebration at Creighton. This committee has consistently done a great job in providing a suitable program honoring Dr. King -- today is no exception as we celebrate the 25<sup>th</sup> anniversary of the King national holiday.

I am always grateful for this annual celebration because it provides us an opportunity to pause and reflect on Dr. King's life and his legacy; an occasion to recognize members of our campus community and the greater Omaha community who emulate Dr. King's values; and it also provides us an opportunity to reflect on our own lives, our values, and ultimately, our own legacies.

This is a time to check our direction, to benchmark how far we have come and, hopefully, to rededicate ourselves to becoming better people. One of Dr. King's most persistent questions was: What have you done to help other people?

In that simple question, Dr. King underscored all of the values that we, as a Catholic, Jesuit institution, hold sacred:

- respect for the individual,
- compassion for the poor
- justice for all
- service to others.

Rev. King emphasized the importance of working together to fight injustice. As he stated so eloquently in his letter from a Birmingham jail:

"Injustice anywhere is a threat to justice everywhere. We are caught in an inescapable network of mutuality, tied in a single garment of destiny. Whatever affects one directly, affects all indirectly."

We have come a long way since Dr. King gave his famous "*I Have A Dream*" speech. Civil rights laws have been enacted locally and nationally, race relations have improved, we are more tolerant and accepting of other religions, we have national programs to address poverty and homelessness. Federal minimum wage laws have been enacted as well as open housing legislation.

However, we still face tremendous problems. We still have deep pockets of poverty -- the gap between the rich and the poor has widened. We face paralyzing unemployment and discrimination in access to health care. Intolerance and prejudice still exist in our communities and equality still eludes many in our society.

And so I challenge you today, as I challenge myself and this institution, to let this event be a source of renewed determination and hope as we look toward the future; working together to overcome those obstacles within us and within our society that prevent us from being one community in solidarity with each other.

I know you have all heard this exhortation time and time again, but it is worth repeating because, if nothing else, it reminds us of our responsibility to each other to work for a more just, humane and harmonious future for all of our brothers and sisters.

One of my favorite quotes from Dr. King, which I recall often, is drawn from a sermon entitled “Unfulfilled Dreams.” It is based on the story from Hebrew scripture of King David’s failure to complete a temple for the Ark of the Covenant.

King reminds us that in the course of our lives we all start many projects but do not necessarily finish many of them. King notes:

“Well, that is the story of life. And the thing that makes me happy is that I can hear a voice crying through the vista of time saying: it may not come today, or it may not come tomorrow, but it is well that the dream is within your heart.”

It is well that you are trying. You may not see it. The dream may not be fulfilled, but it is good that you have the desire to bring it into reality. It is well that it is within your heart.”

And so it is for each of us gathered here. It is well that the *dream is within your heart*. Thank you for being with us today. Thank you for witnessing Creighton’s commitment to build a more inclusive community and a more just and humane world. Thank you for having the intention within you.

Let me end with a favorite passage of mine from the British philosopher Bertrand Russell., to which I often refer in my personal reflections. Russell writes:

“I may have thought that the road to a world of free and happy human being shorter than it is proving to be, but I was not wrong in thinking that such a world is possible; and that it is worthwhile to live with a view to bringing it nearer.

I have lived in pursuit of a vision, both personal and social. Personal: to care for what is noble, for what is beautiful, for what is gentle; to allow moments of insight to give wisdom at more mundane times.

Social: to see in imagination the society that is to be created, where individuals grow freely, and where hate and greed and envy die because there is nothing to nourish them. These things I believe, and the world, for all of its horrors, has left me unshaken.”

So say I, and so lived Dr. King. Thank you.



## DAYLIGHT SAVING TIME

March 13 is the start of Daylight Saving Time.

Don't forget to turn your clocks AHEAD 1 hour.



# HISTORY OF VALENTINE'S DAY

Every February, across the country, candy, flowers, and gifts are exchanged between loved ones, all in the name of St. Valentine. But who is this mysterious saint and why do we celebrate this holiday?

The history of Valentine's Day -- and its patron saint -- is shrouded in mystery. But we do know that February has long been a month of romance. St. Valentine's Day, as we know it today, contains vestiges of both Christian and ancient Roman tradition.

So, who was Saint Valentine and how did he become associated with this ancient rite? Today, the Catholic Church recognizes at least three different saints named Valentine or Valentinus, all of whom were martyred. One legend contends that Valentine was a priest who served during the third century in Rome. When Emperor Claudius II decided that single men made better soldiers than those with wives and families, he outlawed marriage for young men -- his crop of potential soldiers. Valentine, realizing the injustice of the decree, defied Claudius and continued to perform marriages for young lovers in secret. When Valentine's actions were discovered, Claudius ordered that he be put to death. Other stories suggest that Valentine may have been killed for attempting to help Christians escape harsh Roman prisons where they were often beaten and tortured.

According to one legend, Valentine actually sent the first 'valentine' greeting himself. While in prison, it is believed that Valentine fell in love with a young girl -- who may have been his jailor's daughter -- who visited him during his confinement. Before his death, it is alleged that he wrote her a letter, which he signed 'From your Valentine,' an expression that is still in use today. Although the truth behind the Valentine legends is murky, the stories certainly emphasize his appeal as a sympathetic, heroic, and, most importantly, romantic figure. It's no surprise that by the Middle Ages, Valentine was one of the most popular saints in England and France.



Celebrate friendships old and new this Valentines Day and every day. They make the world a better place.

Valentines Day,  
Monday, February 14