

Facilities Management News

Vol. 10 Issue 4

November 2014



It's time for me to bid Adieu. No, no, I'm not leaving Creighton University, but I am saying goodbye to doing business without considering all options for increased productivity and opportunity. The "old way" that I was indoctrinated to believe was prudent, even critically necessary, has proven to be false and counterproductive. I've known this truism for years and when I arrived on campus about 15 months ago I saw firsthand what teamwork and cooperation could accomplish and the benefit that we realized through enhanced customer service.

We have an open shop within Facilities Management at Creighton University, which can mean, when we see prospect for improvements a committee doesn't need to be formed, you don't have to verify that past practice isn't being corrupted, analysis can be swift, and service implementation upgrades are seen as opportunities rather than additional work.

I learned a lesson years ago while working with my father on his brother's farm. Part of the operation was raising swine and as I tagged along with my father one day a small piglet had gotten out of its pen. My father picked it up and placed it back in an area with dozens of others. Within minutes I heard loud cries of distress and turned to find all the other piglets attacking one small animal. As I learned later, we had taken the one piglet that had gotten out of its pen and accidentally placed it in the wrong group.

My father knew instinctively what to do, which was to grab a gunny sack and drench it with kerosene. He jumped into the pen and proceeded to touch as many of the animals as possible including the one that was being attacked. Almost immediately the distressful cries and noise came to an end. When I asked my father why he had taken that old wet sack into the pen he replied, "Because the animal was from a different pen and it smelled dissimilar so it was being pick on".

I've told that story many times in the past to explain that we shouldn't need to form a committee to discuss an issue when quick action is necessary, common sense will solve 99 percent of what needs to be accomplished, there is really no differences between any one of us, we can't conduct business through harassment or intimidation, or a whole host of other situations in the work place or our personal life.

Thankfully, Creighton University is a place where we can be different and accepted as part of the whole. The wide breadth of talent and personalities that are presented within Facilities Management make us strong. The service we provide, and the people we provide that service to, benefit from our collective strength. As always, thank you for allowing me to lead such a fine organization of which I'm so proud to be called a part of.

**Tim P. Norton, Assistant Vice President
Facilities Management & Planning**

Creighton University
723 North 18th Street
2500 California Plaza
Omaha, Nebraska 68178
402-280-2355 (Desk)
402-280-2358 (Fax)



Dear Colleagues and Students,

As we approach mid-term, my thanks to all of you for helping make the fall semester so successful. Record enrollment, student research presentations, campus lectures, grant awards, community service, campus ministry events, fall sports – obviously these are only a fraction of everything going on at Creighton. All of this and more has provided a great start to the academic year.

Adult Learners

I would like to address a topic that has been the subject of conversation on campus recently. I want to state emphatically the University's wholehearted support for our nontraditional/adult students and the University's efforts to provide more opportunities for adult learners. A Sept. 25 *Creightonian* article included remarks about these students that do not reflect the University's beliefs. The adult learners enrolled at Creighton University are an important part of our educational mission. They bring diversity and life, business and spiritual experiences to our campus which enrich our classrooms and curricula.

Student Loan Default Rate

The U.S. Department of Education released data recently on higher education student loan default rates. I am pleased to report that Creighton's 2.0 percent default rate is well below the national (13.7 percent) and state (7.0 percent) averages and the fifth lowest among the 28 Jesuit institutions. The average default rate for four-year private institutions is 7.7 percent. A loan is considered to be in default once the student borrower has entered repayment status and then does not make payment for at least 270 days.

Interdisciplinary Graduate Education

Our initiatives to establish firmly Creighton at the forefront of interdisciplinary education is validated by a recent statement from the Council of Graduate Schools. Leaders of graduate institutions from 14 countries agreed in September on a set of principles supporting interdisciplinary learning. The statement from the Eighth Annual Global Summit on Graduate Education recognized that complex questions in a global society can't be answered using a single method or approach. It noted that graduates will be called upon to answer these questions and that institutions must prepare them to conduct research and collaborate beyond the bounds of one academic discipline. The statement said that with an interdisciplinary basis, "...students will be poised to succeed as the researchers, teachers and leaders of the future."

Grants Awarded

Congratulations to all those involved in the University being awarded a federal three-year [Racial and Ethnic Approaches to Community Health](#) (REACH) grant totaling \$1,478,778 to explore new models in reducing health disparities in the African-American population in Douglas County. Our Center for Promoting Health and Health Equity - Racial and Ethnic Approaches to Community Health (CPHHE-REACH) program has joined forces with others in Douglas County to concentrate on this important community issue. Sade Kosoko-Lasaki, M.D., Associate Vice Provost for Health Sciences, is principal investigator. Co-investigators include John Stone, M.D., Ph.D., professor in the Center for Health Policy and Ethics, School of Medicine, and Jeffrey Smith, Ph.D., associate professor in the Department of Education, College of Arts and Sciences.

Our congratulations also to Timothy Simeone, Ph.D., assistant professor of pharmacology in the School of Medicine, who has received a five-year \$1.5 million NIH grant from the National Institute of Neurological Disorders and Stroke to identify new mechanisms in epilepsy to provide targets for therapeutics. This study is related to his previous research which has identified one particular pathway important for the management of seizures in children and adolescents with

a special high-fat diet. Dr. Simeone's research will be exploring this and other pathways that can be targeted for different treatments.

Executive Searches

Final candidates in the searches for deans of the School of Law and the College of Nursing are currently visiting our campus. They are having conversations with faculty, staff, students and administrators in getting to know more about Creighton University. You can learn about the candidates by reviewing their bios and resumes at <http://www.creighton.edu/office-of-the-president/intranet/executive-searches>. In addition, the search for the Chief Communications and Marketing Officer is progressing well. We expect to have candidates on campus later this month. Representatives from University leadership, faculty, staff, students, and alumni will be included in the selection process for this important role.

May you find in autumn's beauty a reflection of God's glory and majesty.

God's blessings,

Timothy R. Lannon, S.J.



Timothy R. Lannon, S.J.

President | Creighton University | www.creighton.edu |

phone: 402.280.2770 | email: president@creighton.edu |

2500 California Plaza, Omaha, Nebraska 68178



At this year's St. Francis Day celebration, the Sustainability Council announced the inaugural winners of the **Spirit of St. Francis Sustainability Award**.

This award identifies and recognizes Creighton University students, faculty, staff, and administrators from across the university who are engaged in making an impact on, and developing a culture of, campus sustainability efforts. Their efforts can include generating awareness, implementing strategic projects, or catalyzing new initiatives

Theresa Hawley won the Community Partner award: "For the past two summers, Theresa has been the point person for Creighton's Community-Supported Agriculture (CSA) partnership with Wenninghoff Farms. This program brings fresh, locally grown produce to members of the Creighton community by delivering them to campus; this is a tremendous opportunity to live a little more simply, contribute less to carbon emissions, and eat more healthy food. Theresa embodied the ACT portion of the St. Francis Pledge by working to bring this program to campus."

Michael Cherney won the Spirit of St. Francis Award: "Mike Cherney is the architect of the energy program on campus that brought to Creighton the largest solar energy installation in Nebraska. But more important than the infrastructure is the academic program that Mike brought into being." "In the last year, Mike has revised the curriculum, based on feedback from the initial student cohorts as well as from industry partners. He has also helped pursue additional funding from OPPD to expand the alternative energy education opportunities at Creighton." "Dr. Cherney has played a very important role in inspiring me to live out my values and faith in my teaching of environmental sustainability and social equity."

Congratulations to Mike and Theresa! Both demonstrate what one person can do to advance sustainability on campus.



Grounds & Landscaping



On August 21, 2014 Landscape Management hosted a tree planting event with five members of the Creighton Students Union. Through a \$1200 donation from CSU five trees were planted on main campus to replace trees that were removed in the Spring due to winterkill, disease, and storm damage. Two Northern Red Oaks were planted north of Reinert Alumni Library, one Tulip Poplar was planted southwest of Dowling Hall, and two Ginkgos were planted south of Bierne Tower.

The planting of these three species increases species diversity on main campus, which is dominated by Honeylocust, Crabapple, Maple, and Spruce. Increased species diversity helps to minimize the negative impacts of pests and diseases (especially those that are species-specific) and changes in climate or cultural conditions, making the campus forest more adaptable and resilient. In addition, a diverse mix of trees lends a more pleasing and interesting aesthetic to the landscape.



An additional, indirect benefit of increased diversity is the relevance it gives the campus landscape to academic programs. Having these particular species planted in the heart of campus puts them within walking distance of academic buildings, where Biology faculty say they will be able to easily integrate the trees into their Introductory Botany curriculum.

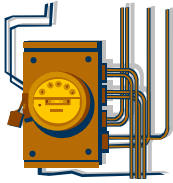
To commemorate the planting, CSU is donating additional funds to purchase anodized aluminum labels that identify the trees by genus, species, and common name and acknowledge CSU's donation. The labels will help the University meet a requirement of Creighton's status as an Affiliated Site with the Nebraska Statewide Arboretum, which requires at least some trees on the site to be identified for educational purposes. In addition, the planting event fulfills the Service Learning requirement of Creighton's Tree Campus USA recognition.





ENERGY MANAGEMENT

With the wide range of duties and structure changes of the energy management department they have been striving forward to keep on top of the many work orders and problem calls. The department has welcomed Dave Feder and a fall Intern, Michael Troup, who is enrolled in the Energy Technology Program here at Creighton. They are also working through the duties of those that have retired or moved to different positions within Creighton University.



The Energy Management department is excited about the wide range of projects being completed that will save the campus thousands of dollars on energy usage. One of the many projects is installation of steam, condensate, chilled water and electric meters on many of the buildings. This project will be used to document the energy usage of separate buildings on campus which will enable the department to create energy savings initiatives on these buildings.

Energy Management is responsible for monitoring and adjusting the controls systems across the campus. Their goal is to keep occupants comfortable (within Creighton standards), protect the buildings, protect the equipment and save energy. This is not an easy task as you might imagine. The department is responsible for the majority of the energy spent on heating and cooling in most of the buildings on campus. They work closely with the controls and engineering teams to assure that the projects are working the way they were designed.



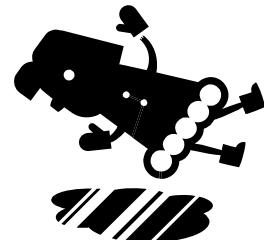
Energy savings is at the forefront of the campus initiatives and this department is tasked with helping achieve these goals. Energy savings should be on everyone's minds these days. If anyone would like to contribute a suggestion or idea for our campus you can drop a line to anyone in the Energy Management Department or Wes Walling.

Environmental Health & Safety



As winter approaches and we are starting to see and feel colder weather it is important to remember that winter will bring snow and ice. Your choice of footwear to wear to work is important to your safety. Low flat soles with an aggressive tread will help you keep your footing. Even if you will be wearing dress shoes as part of your daily job, wear your winter boots and take the time to change your shoes when you get here.

If you have to walk on ice or snow that our diligent grounds crew has been unable to get to, take slow short steps, and keep your weight centered. Concentrate on your walking when on slippery surfaces, not on what is going on around you. Taking a few extra minutes to get where you are going and wearing the correct shoes when you go out, can save you the pain of an injury and keep you working!

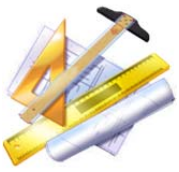


CUAlert™

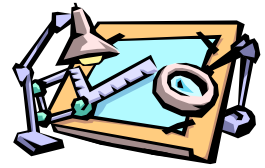
CUAlert™ is a multi-channel communication system that allows the Creighton community to receive emergency information in a time effective manner. All active CU students, faculty, and staff will have their CUmail address automatically added to the CUAlert™ system. If you want to receive notifications via cell phone, landline phones or text messaging you have to log in to the CUAlert™ system (<http://www.creighton.edu/cualert/>) and provide this information. You are responsible for keeping this data accurate. You can log in at any time and update or remove your information.



BE PREPARED FOR WINTER WEATHER – SIGN UP TO RECEIVE ANY WEATHER RELATED ALERTS!



Planning and Design



St. John's Church is an active area; there are three projects in various states of progress. There is the very obvious addition of an elevator to the west side of the church which is scheduled to be completed in January, the stone repair and tuck pointing on the remaining three sides is wrapping up, and the window glazing was completed in early October.

Other projects include:

- On the west side of Swanson Hall phase II of the Utilities and Energy Master Plan is in a holding pattern as we wait for semester break to complete the connection of the new transformer to Swanson.
- The Retreat Center in Griswold, IA, is in preparation of an addition to the dining hall in the spring.
- There are multiple projects that may not be seen by the general campus population but will be noticeable in the University's utility bills. Wes Walling, Associate Director of Energy Management, has energy conservation projects in progress such as the Boyne, Skutt and Kiewit Fitness Center HVAC upgrades, the Criss Complex hot water heater and valve replacement, the continuation of the Criss Science lab exhaust energy strategies, and Heider HVAC replacement.
- There are many deferred maintenance projects in the design phase and should be approved and begin in the next three months.

Here are just a few of the projects that have been approved or are in progress since our last newsletter:

- Replacement of the turf lighting upgrade in the batting cages in Kitty Gaughn
- Relocate the 3D printer to the Reinart Alumni Library
- Convert Criss 111A and 116 into a conference room
- Complete the repairs of the steam and chilled water lines on Burt Street between 27 and 28 Streets. (this is scheduled to be completed November 15 and the sidewalk and street will be open)

This is my first contribution to the Facilities newsletter in my new role as the Associate Director of Projects and Trades. I am very excited about the opportunity to work with campus personnel on all types of projects. Feel free to contact me with questions, concerns or just a request for updates between newsletters.

Congratulations!

Fran Angerth and Maria Jerrell were recognized at the Town Hall Meeting on Tuesday, October 28, 2014. The certificates read, "...in appreciation for outstanding achievement in support of the Creighton University Strategic Planning Initiative." Fran and Maria have worked diligently to launch the Space Management and Deferred Maintenance software. In addition, Maria has worked with the Energy Initiative.

Congratulations, Fran and Maria!



Hold the Holidays

Weight Management Program



Americans typically gain between 3-5 lbs over the holiday season. Don't let this be you! Join the Hold the Holidays Challenge!

Dates: November 17th - January 16th

What: Weigh in the week of Nov. 17-21st and weigh out the week of January 12-16th. Everyone who maintains or loses weight will win a prize! BONUS All teams that maintain or lose weight will be entered into a drawing for a FREE team lunch!

Register as a TEAM (2-6 people) or INDIVIDUAL

Sign up here: <https://www.surveymonkey.com/s/JK25DBV>

Questions? wellness@creighton.edu

Dates to remember:

Creighton University Benefits Fair – Tuesday, November 4th

The Creighton University Benefits Fair will be Tuesday, Nov. 4, from 8:30 a.m. to 3 p.m. in the Skutt Student Center, Mutual of Omaha Ballroom. Bring your Creighton ID card for admission and entry for door prize drawings. You can also get your free flu shot. Meet with representatives from United Healthcare, Metlife, Metlaw, Pavflex and VSP.

November 2, 2014



**VETERAN'S DAY
TUESDAY
NOVEMBER 11, 2014**



Facilities Management Christmas Lunch

Lower Level of St. John's Church
Thursday, December 18, 2014
11:30 a.m. to 1:00 p.m.

This Potluck is for ALL Facilities Management employees. Watch for sign-up sheets for food. Please plan on attending.

University Holiday Reception

Tuesday, December 16, 2014
3:00 p.m. to 6:00 p.m.
Harper Center
Ahmanson Ballroom

All faculty and staff of Creighton University are invited to attend this holiday reception hosted by President Timothy R. Lannon, S.J. An electronic invitation will be sent out in advance requesting an RSVP.

Upcoming Creighton Holidays...



Christmas Holiday Break
December 24, 2014 through January 1, 2015



2014 HOLIDAY SPIRIT PROJECT

Facilities Management has chosen Wounded Warriors Family Support as our Holiday Spirit Project.



This organization offers many programs for combat wounded military families. You can visit their website for more information:

www.woundedwarriorsfamilysupport.org.

A donation receptacle will be in place in the Facilities Front Office or you can give your donation to your supervisor. Your last opportunity to give will be at the Christmas Luncheon on Thursday, December 18th.

Let's get in the holiday spirit and share our blessings with those who have sacrificed so much.