

# ST. JOHN'S PARISH NEWSLETTER

ePistle at [www.creighton.edu/stjohns](http://www.creighton.edu/stjohns)

Omaha's Jesuit Parish located at Creighton University, 2500 California Plaza, Omaha, NE 68178  
Cornerstone laid 1887—Established as a Parish 1897—Designated a City Landmark 1981

## December 4, 2016 - Second Sunday of Advent

<b>MASS/RECONCILIATION TIMES</b>	402-280-3030
<b>PARISH OFFICE</b>	402-280-3031
<b>Pastor:</b>	Fr. Lorn Snow, S.J. 402-280-3262
<b>Associate Pastor:</b>	Fr. Phil Amidon, S.J. 402-280-2206
<b>Eucharist:</b>	
<b>Monday- Friday 7:00 a.m.</b>	<b>Main Church</b>
No Mass during University Breaks	
<b>Monday—Friday 12 noon</b>	<b>Main Church</b>
<b>Monday—Friday 5:00 p.m.</b>	<b>Fr. Halley Chapel, LSJ</b>
Monday 9:00 p.m.	Main Church**
Tuesday 9:00 p.m.	Fr. Halley Chapel, LSJ**
<b>Saturday 7:00 a.m.</b>	<b>Main Church **</b>
12 Noon	Fr. Halley Chapel, LSJ
5:00 p.m.	Main Church
(Anticipatory)	
<b>Sunday 8:00 a.m.</b>	<b>Main Church</b>
10:30 a.m.	Main Church
4:30 p.m.	Main Church**
8:30 p.m.	Main Church**
10:00 p.m.	Main Church**
**Academic Year Only—dates @ <a href="http://www.creighton.edu/stjohns">www.creighton.edu/stjohns</a>	
<b>Adult Faith Formation (Fall and Lenten Series)</b>	
Sunday 9:15 a.m.	Conf. Room, LSJ
<b>Youth Religious Education</b>	
Sunday 9:15—10:15 a.m.	LSJ
<b>Reconciliation:</b>	
Mon—Fri 12:30—1:00 p.m.	
Saturday 4:00—5:00 p.m.	

### St. John's Parish Pastoral Council

Rick Bellino, Co-Chair	402-699-6380
Laraine Conway	402-558-4105
Martha Lemar, Co-Chair	402-280-3068
Sean Malloy, Secretary	402-214-5572
Bill Mullen	402-508-3107
Jane O'Brien	402-551-7436
Richard Super, Trustee	402-551-9412
Helen Wanken	402-558-9209
Sandi Cihal	
Michael Hoover	402-933-5024
Tin Tran	402-884-9961
Alyssa Beasley, CU Student	
Brielle Kelley, CU Student	



*"John the Baptist appeared, preaching in the desert of Judea and saying, 'Repent, for the kingdom of Heaven is at hand!'"*

*(Matthew 3:1-2)*

There are times my children's faults weigh heavily on me. Why does she procrastinate so? Why don't they pick up after themselves? Why doesn't he seem to have a plan for his life? Why can't he control his temper better?

But there's a funny thing: it's called a mirror. For, without exception, I can look in the mirror and see every single one of the flaws that irritate me so in others reflected there. Every one!

How much of my energy is spent in detecting and correcting the faults of others? During Advent, it's time for me to listen to John the Baptist, to admit my own faults and sins, and to repent of them, to let God's mercy fill me so that I might become more merciful in turn.

*St. John the Baptist, I'm listening to your call.  
Pray for me.*

*Amy Welborn  
Living with Christ, December, 2016  
Used with Permission*

## Liturgical Ministry Schedule— December 10-11, 2016

This schedule can also be accessed at St. John's website—<http://stjohns.creighton.edu>

	Saturday 5:00 p.m.	Sunday 8:00 a.m.	Sunday 10:30 a.m.	Sunday 4:30 p.m.
<b>PRESIDER</b>	Fr. Coelho, S.J.	Fr. Amidon, S.J.	Fr. O'Meara, S.J.	Fr. Romero, S.J.
<b>LITURGICAL ASSISTANT</b>	Maryanne Rouse	Bob Austria	Pam Yenke	Jacob Chapman
<b>ALTAR SERVER</b>			Katie Hawkins	
<b>LECTORS</b>	Jane O'Brien	Sam Crowley	Tom Berg	Abigail Bodeau
	Susan Recker	Dick Cleary	Christy Fast	Caroline Morse
<b>PRAYERS</b>	Connie Finney	Dick Cleary	Craig Nigrelli	Lauren Phillips
<b>EUCCHARISTIC MINISTERS</b>	T. Bartek	B. Austria	P. Martin P. Edney	C. Meehan
	G. Selk	B. Carlson	R. Wright	S. Toalson
	E. Wirth	M. Carlson	A. Haddad	B. McElenney
	T. & C. Finney		T. Berg	G. Wilson
	L. & M. Brennan		T. Cole	E. Schaffer
	B. & S. Selde		C. Fast	

### Readings for the week

12/04	Sunday <i>Second Sunday of Advent</i>	Is Rom Mt	11:1-10 15:4-9 3:1-12
12/05	Monday	Is Lk	35:1-10 5:17-26
12/06	Tuesday	Is Mt	40:1-11 18:12-14
12/07	Wednesday	Is Mt	40:25-31 11:28-30
12/08	Thursday <i>Immaculate Conception of the Virgin Mary</i>	Gn Eph Lk	3:9-15, 20 1:3-6, 11-12 1:26-38
12/09	Friday	Is Mt	48:17-19 11:16-19
12/10	Saturday	Sir Mt	48:1-4, 9-11 17:9a, 10-13
12/11	Sunday <i>Third Sunday of Advent</i>	Is Jas Mt	35:1-6a, 10 5:7-10 11:2-11

### Mass Intentions December 5–10, 2016

#### **7:00 AM (Main Church)**

Monday	
Tuesday	
Wednesday	
Thursday	<i>Immaculate Conception of BVM, no intentions</i>
Friday	
Saturday	Christina Rose Miller – 1st anniversary of death

#### **12:00 Noon (Main Church)**

Monday	Jack & Shirley Doran Marcil-deceased
Tuesday	
Wednesday	
Thursday	<i>Immaculate Conception of BVM, no intentions</i>
Friday	William Ramsey—deceased
Saturday (LSJ's)	

#### **5:00 PM (Fr. Halley Chapel, LSJ's)**

Monday	
Tuesday	Mora Ramirez Layton —deceased
Wednesday	Deceased Members of Ignatian Associates
Thursday	<i>Immaculate Conception of BVM, no intentions</i>
Friday	Colleen Davis & Family—prayers

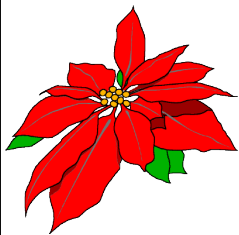
### Weekly Offering Report

Weekly Budget Goal	7,067.31	Annual Budget Goal	367,500.12
Weekend 11/19-20/2016	7,832.02	Fiscal Year-to-Date Goal	148,413.51
Above (below) weekly goal	764.71	Amount Collected YTD	147,218.83
		Above (Below) YTD Goal	( 1,194.68)

Weekly Budget Goal	7,067.31	Annual Budget Goal	367,500.12
Weekend 11/26-27/2016	3,703.31	Fiscal Year-to-Date Goal	155,480.82
Above (below) weekly goal	(3,664.00)	Amount Collected YTD	150,922.14
		Above (Below) YTD Goal	( 4,558.68)



Renee Kalkowski  
Jack Walsh  
Colleen Davis & Family  
Dan  
Richard Gritit



## Christmas Environment

### Donations

At all the entrances of the church you can find envelopes for Memorials for the Christmas Environment. Please return envelopes by way of the collection baskets on Sundays. The last weekend to send in a memorial will be the weekend of December 18<sup>th</sup>. If you have any questions please contact Kathleen Denne at 402-280-2975 or email [kdenne@creighton.edu](mailto:kdenne@creighton.edu)

**The Christmas Giving Tree Project** New this year to St. John's. Please consider wrapping up a gift for a child living in poverty. Simply select an ornament from the tree displayed **next to Mary's altar**. Wrap and attach the ornament to your gift. Put the gift under the tree and you have made a child smile! This year, the hope is to collect needed items for:

- ◆ New immigrant and refugee children of Fontenelle Elementary School who need socks, gloves, shoes and other things
- ◆ The Children of the Hope Center for Kids. They provide a safe after-school and summer program
- ◆ Finally, consider a donation for \$50.00 toward supporting a child's education. You will see ornaments for this option.



All gifts should be under the tree before **December 19**. Questions? Contact Vivian at [vivianamu@creighton.edu](mailto:vivianamu@creighton.edu) or 402-280-2786. Thank you for your generosity and kindness.



**Seeded at God's Hand: The Collected Writings of Patrick Malone, S.J.** Books for sale (\$15.00) in the parish office or online at: <http://www.creighton.edu/>



Thank you for your generous support for:  
**Catholic Campaign for Human Development**  
The special collection raised \$876.38

Thank you for your generous support for:  
**St. John's Building Fund**  
The special collection raised \$1,316.10

## Advent Series at St. John's Parish

### **Monday December 5:** Advent

Reconciliation Service, 5:30 p.m., Main Church, followed by light refreshments in the Resource Room. *Prepare the way of the Lord! The sacrament of reconciliation is a wonderful way to prepare a space for Christ to enter into our lives, and to receive the gift of mercy.*



**Monday, December 12:** Advent Lessons and Carols, 5:00 p.m., Main Church, followed by light refreshments in the Resource Room. *A service of scripture readings and carols telling the story of Christ coming into the world.*

**Monday, December 19:** Advent Vespers, 5:00 p.m., Main Church, followed by light refreshments in the Resource Room.

**Please join us!**



Thursday, December 8, 2016 is the *Feast of the Immaculate Conception of the Bless Virgin Mary* and is a Holy Day of obligation. Please join us for Mass in the Main Church at 7:00 a.m., noon (with music) or 5:00 p.m. (with music)

**Please retrieve November Memorial pictures/keepsakes from the sacristy as soon as possible. Thank you.**

### Campus Ministry Confirmation Program

Creighton Students, are you interested in becoming full members of our Catholic worshipping community? Have you already received the sacraments of Baptism and first Eucharist? Campus Ministry invites you to prepare for the sacrament of Confirmation with other college students.

Please register by Tuesday, December 6 through [www.creighton.edu/campusministry](http://www.creighton.edu/campusministry) or contact [BethSamson@creighton.edu](mailto:BethSamson@creighton.edu) for more information.

### Christmas in the Forest

*Presented by Knowles Mercy Spirituality Center*

Friday, December 9 from 5-8 p.m. and Saturday, December 10 from 3-8 p.m. Pilgrimages into the forest every 20 minutes. Come join us in the woodlands for this annual tradition! A family oriented event that will take you on a journey to...sing at the



Christmas tree, visit the shepherd, participate in the manger scene with live animals, gaze at the north star, hear from the innkeeper, and pray at the peace fire. Enjoy festive music, cookies, bars and hot chocolate. (approximately 1 hour) Reservations are required. \$5.00 per person, children under 5 free.

To register, call 402.359.4288.

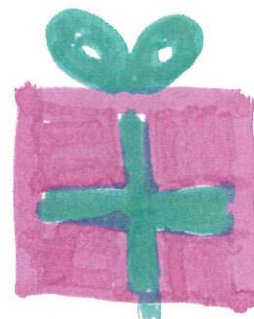
### St. John's Fall Adult Faith Formation Series : Faith beyond Belief Spirituality for Our Times

**Lower St. John's: 9:15-10:15 a.m**

**December 11:** Ch. 17 "Spiritual Growth, or...", Ch. 18 "Roots and Growth, or..." and Ch. 22 "Speaking about Experiences, or..."



MER  
RY  
CR  
IS  
T  
M  
A  
S



By Cece Gerard, 5th Grade