

[View this email in a web page](#)

The Retreat Center

Creighton
UNIVERSITY



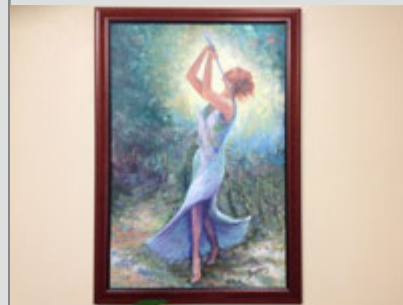
August 2015

HERE IS THE LATEST NEWS
AND INFORMATION FROM
THE CREIGHTON
UNIVERSITY RETREAT
CENTER.

Reflection

By Amy Hoover

Being the Light of Christ continues to be a place of focus for me. Since our last newsletter, two pieces of art have come into my life that speak to me of being the Light of Christ. I share them with you today. I "found" the painting (*pictured at right*) the day after my 50th birthday. The artist is an Iowan, Eleanor Becker. The poem "[Our Greatest Fear](#)" is by Marianne Williamson, often mistakenly attributed to Nelson Mandela. This summer, I pray all may know and embrace the Light of Christ within them.



Retreat for Married Couples

Fr. Larry Gillick, S.J., will direct a retreat for married couples Friday, Feb. 12, to Sunday, Feb. 14, 2016. The weekend will begin at 7 p.m. on Friday evening and conclude Sunday after lunch. Come and spend the weekend together in the beauty of God's creation. Cost for this retreat is \$350 per couple and includes conferences with Fr. Gillick, room and six delicious homemade meals. Come celebrate Valentine's Day with your spouse! **Space is limited so register early.**

[Learn More](#)



Dining Hall Almost Complete

Construction crews have been working hard all summer on the **Loyola Dining Hall**. The expansion project will be complete in early fall. We will then be able to comfortably seat 140 people. We will also have a smaller dining space for silent groups. The expansion will house our office and gift shop as well. Thank you to all who have contributed to this project. We appreciate your care and commitment to the Creighton University Retreat Center.



More Remodeling, Upgrades

We are also working hard on **Jogues Lodge** (*pictured at right*) and the **Montserrat Building**. The exterior facelift of Jogues Lodge should be complete by the end of summer. On the interior, we will be expanding the kitchen and doing some painting to brighten the space. We are remodeling the lower-level rooms of the **Montserrat Building**. This work should be complete by the end of the year.



Thank You

A special thank you to students from **Dowling Catholic High School** (*a few are pictured at right*) who came out for a day of service and helped move furniture and spruce up the grounds! Thank you as well to **Peg Marshall** for her work on the labyrinth and various painting projects. We wish to also thank **Julie Adams**, who has volunteered many hours at the retreat center recently.



We also appreciate all of you who have generously "rounded up" your bill to contribute to our scholarship fund. We appreciate all the prayers and other support received from our generous patrons.

If you or your group would like to help with maintenance or trail work, please don't hesitate to contact Director Amy Hoover at 712.778.2466 or amyhoover@creighton.edu. Thank you to all who are helping to bring our dreams of renovation to fruition. You can contribute online [here](#). (*Fill out your information, then scroll down to Gift Designation. In the "Other Designation - Specify Here," type in Creighton Retreat Center.*)

About the Retreat Center

Questions?

The Creighton Retreat Center is located at 16493 Conrail Ave., Griswold, Iowa, 51535. The center offers eight- and 30-day Ignatian retreats upon request. Accommodations can be made based on your individual schedules. Please contact [Terri Lou](#) for more information.

Phone: 712.778.2466 | **Fax:** 712.778.2467 |
Email: curc@netins.net

Contact Director Amy Hoover
AmyHoover@creighton.edu

To unsubscribe from this newsletter or to change your preferred email address, contact curc@creighton.edu.

Creighton University
2500 California Plaza
Omaha, NE 68178

[click here](#) to manage your email preferences or to unsubscribe