

2022



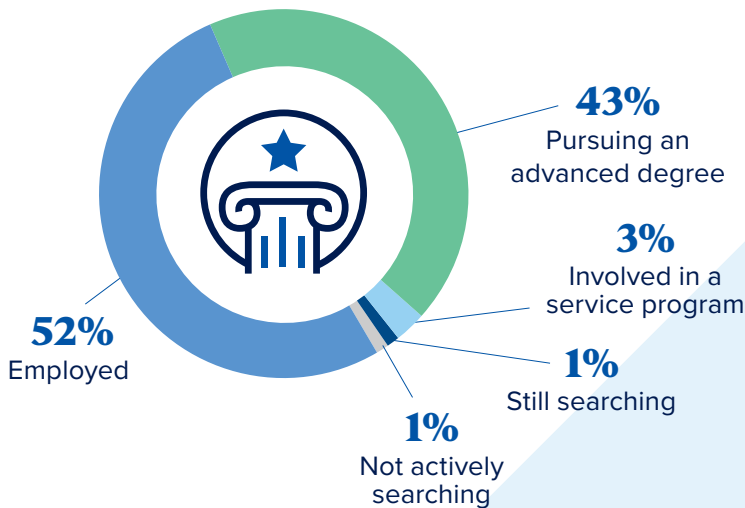
Career Outcomes

FIRST DESTINATION

99% Career Outcomes Rate

(Based on a 88% knowledge rate)

What our College of Arts and Sciences undergrads are doing within 6 months of graduation:



EXPERIENTIAL LEARNING



74%

Participated in experiential learning

such as an internship or research project



49%

Participated in an internship



44%

Participated in research

NOTABLE INTERNSHIP AND RESEARCH SITES

AbbVie Inc.
Allina Health
Alzheimer's Association
Avera Health
Bemis Center of Contemporary Arts
Berkshire Hathaway Homestate Companies
Blue Cross Blue Shield of Nebraska
Bluestem Energy Solutions
Boys Town National Research Hospital

Brookhaven National Laboratory
Cargill
CHI Health
Children's Hospital & Medical Center – Omaha
Creighton University
Department of Health and Human Services
DMSi Software
Douglas County Health Department
Durham Museum

GE Healthcare
HDR
Heartland Family Service
KPMG
Madonna Rehabilitation Hospital
MediaSpark
NASA
Nebraska Medicine
One World Community Health Centers, Inc.
Opendorse, Inc.
QLI

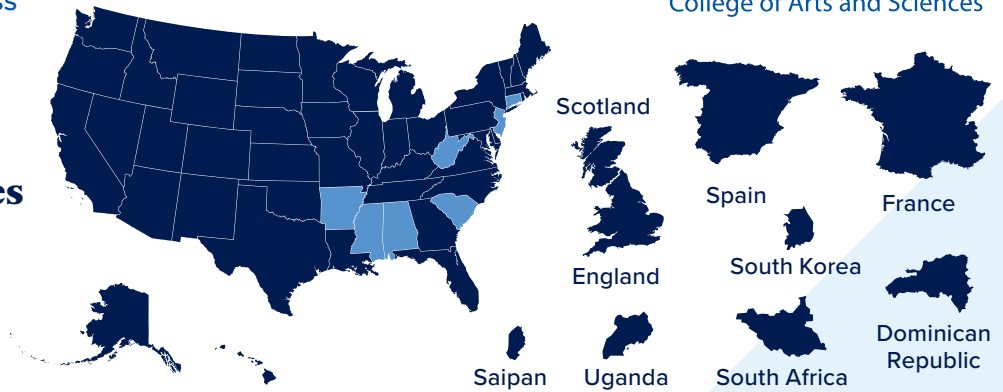
Red Berry Innovations, Inc.
Solimar International
Tenaska
U.S. Congress
U.S. Department of Education
U.S. Department of Justice
U.S. Department of State
U.S. House of Representatives
UCHealth Medical Center of the Rockies
Union Pacific
Valmont Industries, Inc.

WHERE OUR GRADUATES ARE GOING

Creighton graduates are found across the country and the world.



43 States
+ **9** Countries
Plus
Washington, D.C.

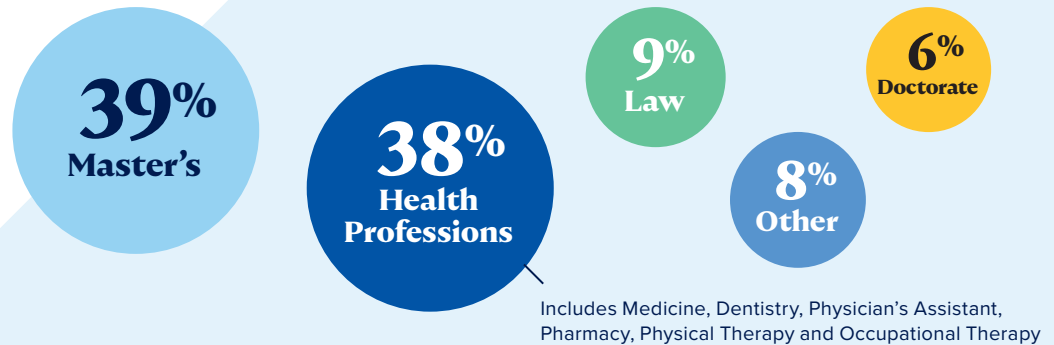


NOTABLE EMPLOYERS



PURSUING ADVANCED DEGREES

The College of Arts and Sciences prepares students to go into a wide variety of graduate and professional programs.



NOTABLE GRADUATE AND PROFESSIONAL SCHOOLS

A.T. Still University

Arizona State University

Baylor University

Boston University

Columbia University

Creighton University

Duke University

Edinburgh Napier University

George Mason University

Georgetown University

Johns Hopkins University

London School of Economics and Political Science

New York University

Regis University

Rush University

University of Iowa

University of Kansas

University of Kansas Medical Center

University of Minnesota Twin Cities

University of Missouri

University of Nebraska Medical Center

University of North Carolina at Chapel Hill

University of Pennsylvania School of Dental Medicine

University of Southern California

Washington University in St. Louis

Learn more: creighton.edu/ccas

Creighton University measures the post-graduation career outcomes for its graduating class through first-destination surveys (FDS). The FDS data collection and reporting is managed by Analytics & Institutional Research in collaboration with the John P. Fahey Career Center following the procedures outlined in the NACE Standards and Protocols for Undergraduate First Destination Surveys.