



Welcome to Summer Preview!

JUNE 15-16, 2023

**CREIGHTON
NEW STUDENT
ORIENTATION**

Creighton
UNIVERSITY



WELCOME

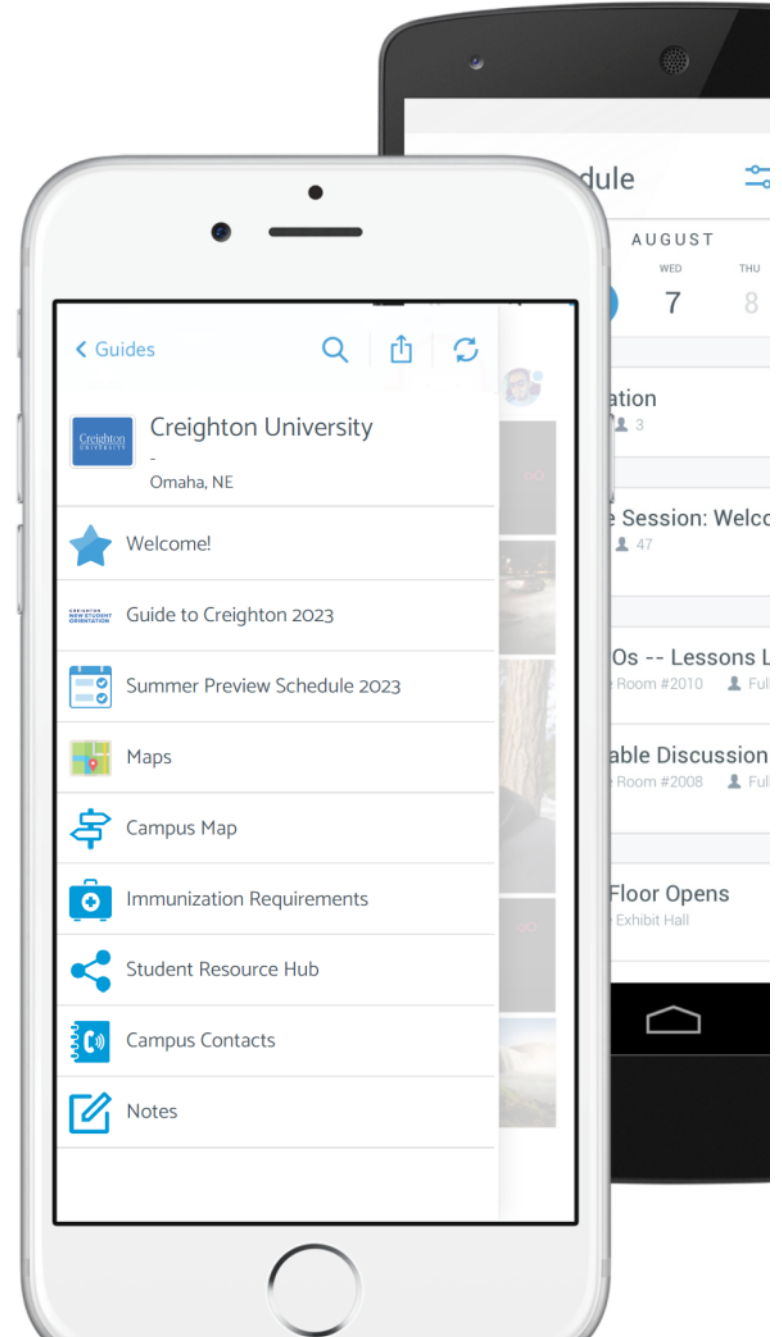
NEW
JAYS

CLASS
of 2027

NEW STUDENT ORIENTATION



Creighton University 2023-2024 has gone mobile!



“
**TRUE BELONGING
IS NOT PASSIVE.**

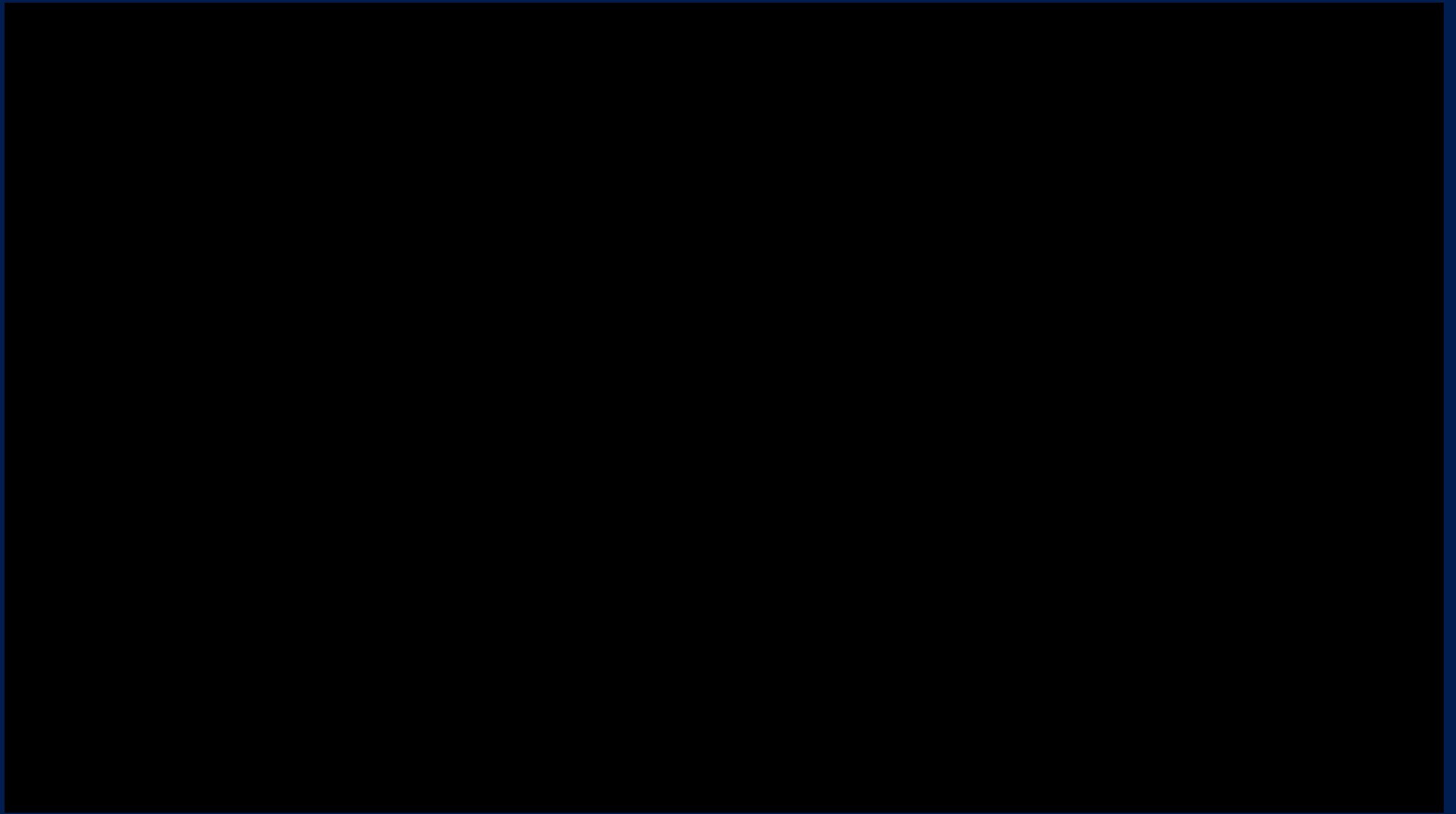
**It's a practice that requires
us to be vulnerable, get
uncomfortable, and learn how to
be present with people without
sacrificing who we are.**

BRENÉ BROWN

Welcome

Dr. Mardell Wilson, Provost





Introducing Your Student Leaders!



Make sure to take everything
you need with you as you exit

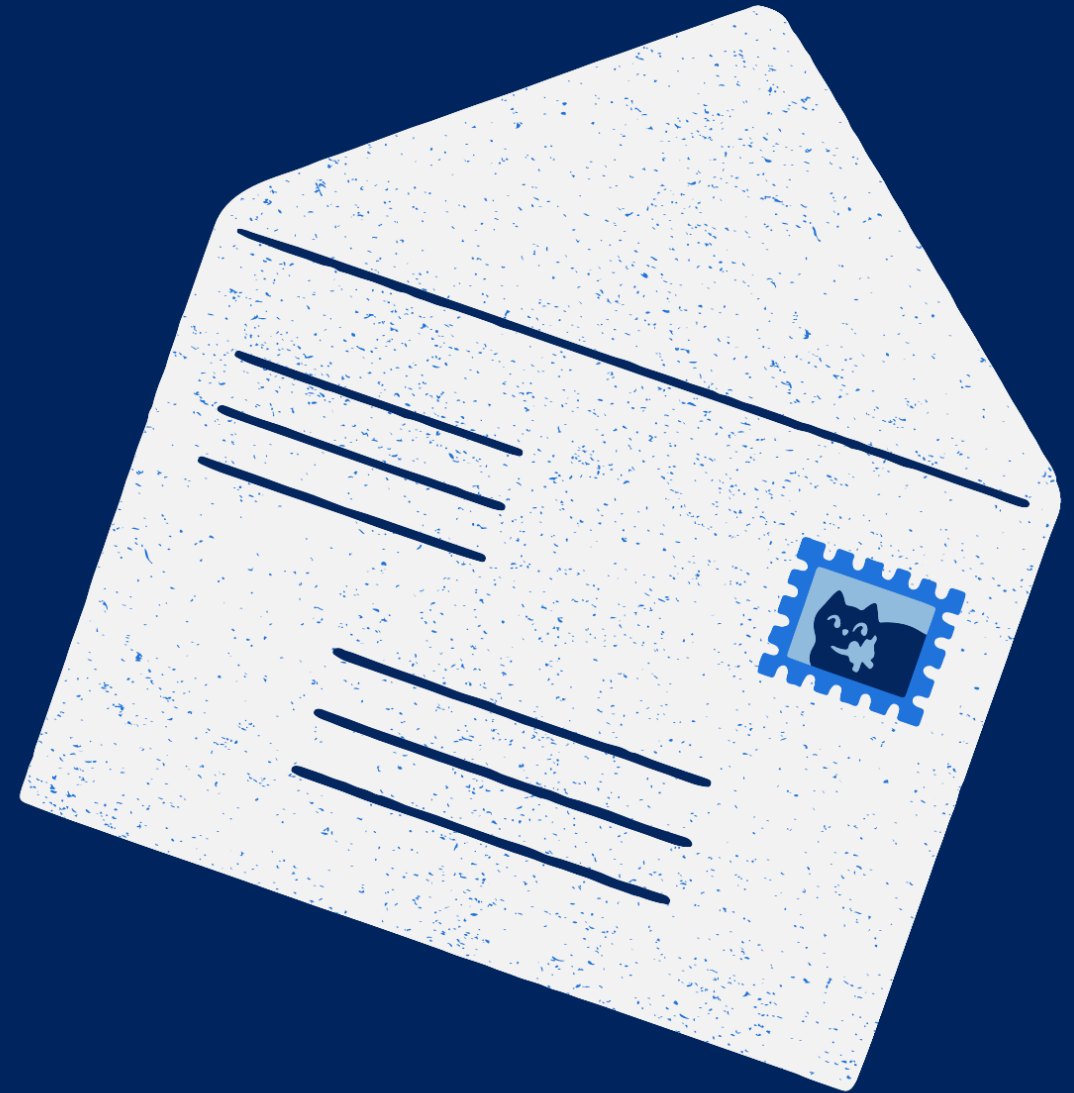


To My New Jay...

STUDENT FULL NAME

STUDENT NETID

STUDENT PHONE NUMBER





Becoming a Bluejay

SUMMER PREVIEW 2023

**CREIGHTON
NEW STUDENT
ORIENTATION**

Creighton
UNIVERSITY

Welcome

Michele Bogard, Ph.D.

**Associate Vice Provost for Integrated
Wellness**

Katie Kelsey, Ed.D.

**Senior Director of
Student Engagement & Belonging**

Robby Francis, M.A.

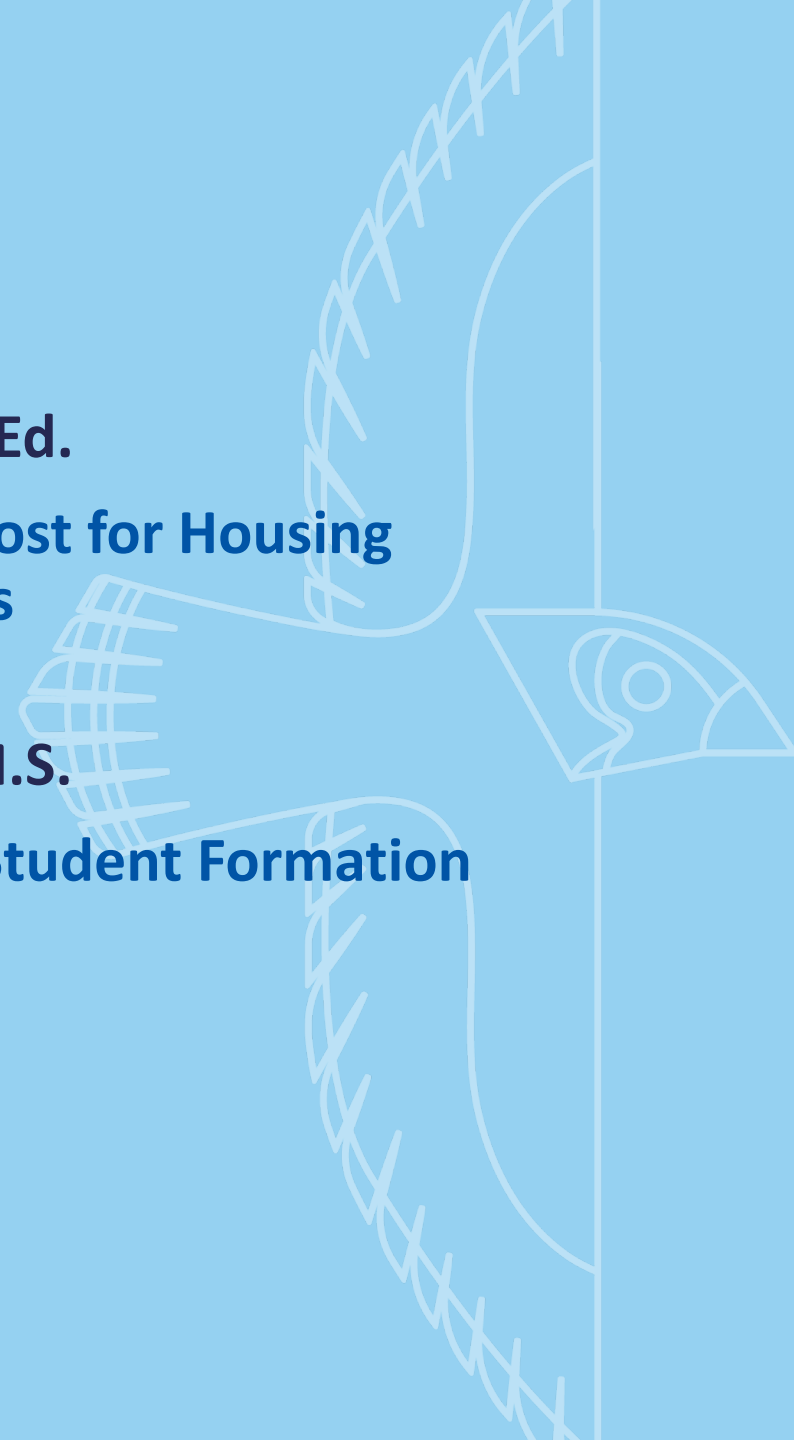
Director of Campus Ministry

Paul Wraalstad, M.Ed.

**Assistant Vice Provost for Housing
& Auxiliary Services**

Desiree Nownes, M.S.

Senior Director of Student Formation

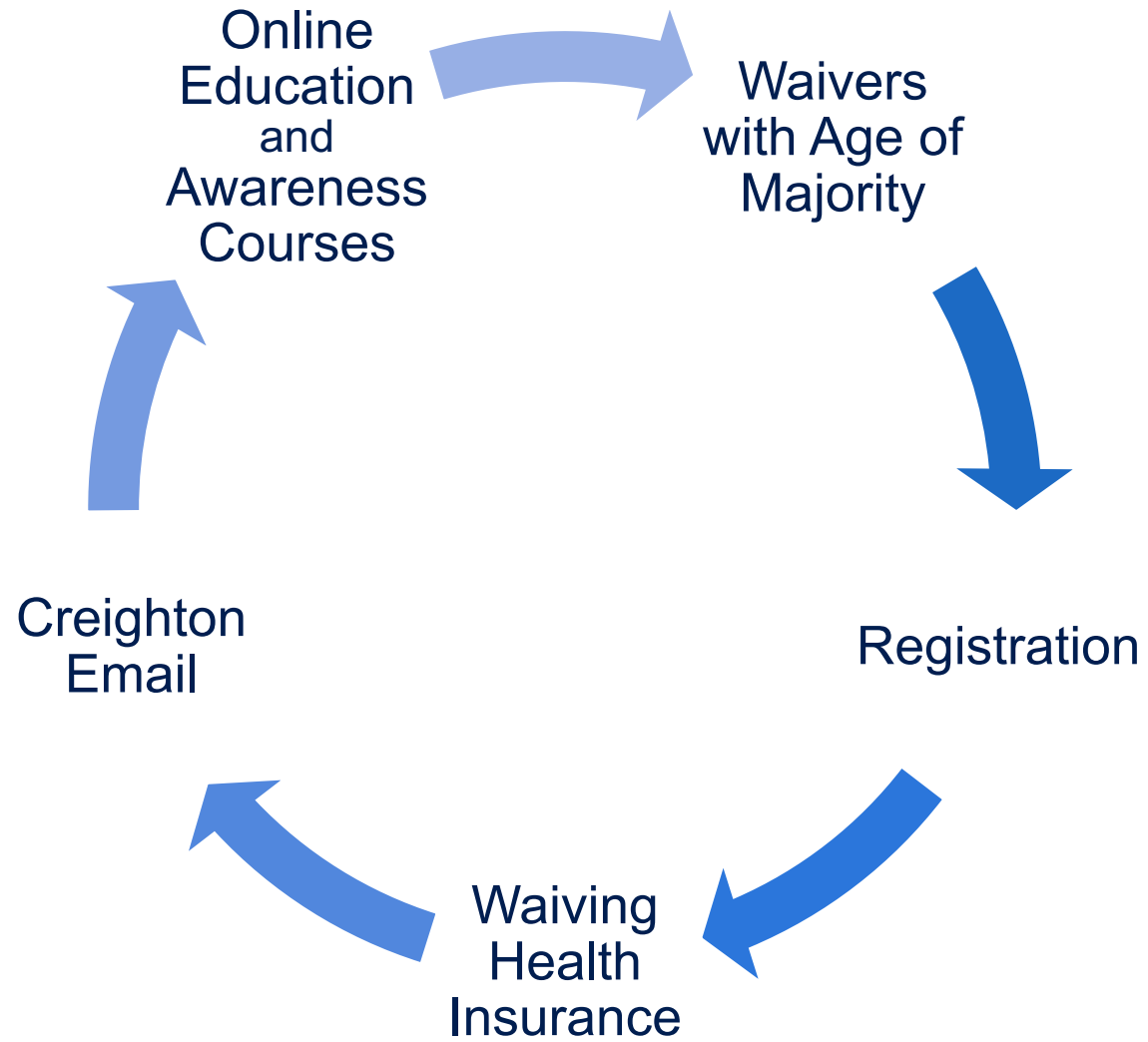


Today's Agenda

- Quick Hits
- What Comes First
- Important Now
- Today and Tomorrow
- Have This Talk



Quick Hits



What Comes First

Welcome
Week,
RSP, &
Transition
to College

Getting
Involved,
Recreation
&
Intramurals

Skutt
Shutdown,
Clifton
Strengths

Freshman
Retreat,
CLC, Open
House,
Day of
Service

Living and
Learning in
the
Residence
Halls

Campus
Updates



Important to Think About Now



Today and Tomorrow



Have this Talk

**About the
Community**

**About
Relationships**

**About
Yourself**

**About
Adulthood**

**About the
University**



What Not to Do...

- Don't overreact to the first bad exam grade
 - Don't call the faculty member
- Don't leave move in right away
- Don't bring a car to campus
- Don't play Tetris with your residence hall room

What to Do...

- Do send care packages
- Do have a conversation about budget
- Do have your student get involved
- Do let the student figure stuff out on their own
- Do have them look into student employment
- Do use your Omaha social network/capital

An aerial photograph of Creighton University at sunset. The sun is low on the horizon, casting a warm glow over the campus. In the foreground, a large, ornate stone clock tower with multiple crosses on its roof dominates the right side. To the left, a wide, paved walkway leads through a lush green area with many trees. In the background, several multi-story university buildings are visible. The overall scene is peaceful and scenic.

Creighton
UNIVERSITY

Thank you



WELCOME

NEW
JAYS

CLASS
of 2027

NEW STUDENT ORIENTATION

**CREIGHTON
NEW STUDENT
ORIENTATION**

Student Employment & Career Resources

Creighton
UNIVERSITY

Who we are

STUDENT EMPLOYMENT & FAHEY CAREER CENTER

Student Employment Office

Harper Center 1100

John P. Fahey Career Center

Harper Center 1088



The Success Center

One place for help and support whether you are a student, parent, or family member.



Success Desk

402.280.1212

Success@creighton.edu

Family@creighton.edu

Located in the
Reinert Alumni Library (RAL)

John P. Fahey Career Center

Career services and resources to support Creighton students and alumni.

- Career Advising and Assessments
- Resumes, Cover Letters, and Personal Statements
- Career Fairs and Recruiting Events
- Interview Preparation and Mock Interviews
- Internship and Job Search Assistance
- Graduate and Professional School Guidance
- Networking and Alumni Mentoring
- Career Development Programs and Courses

EXPLORE • DEVELOP • CONNECT



Student Employment Office

Support Creighton students in securing and maintaining on-campus employment

Why work on Campus?

- Scheduling is Convenient and Flexible
- Connect with Faculty, Staff and Students Across Campus
- Develop Career Readiness Competencies
- Explore Opportunities that Align with Educational Goals
- Discover New Interests
- Earn a Paycheck While in School



Experiential Learning Opportunities

- Student employment and Federal Work Study program (*Student Employment Office*)
- Internships (*John P. Fahey Career Center*)
- Study abroad and Faculty Lead Programs Abroad (*Global Engagement Office – GEO*)
- Service & justice trips and community volunteering (*Schlegel Center for Service & Justice – SCSJ*)
- Undergraduate research (*Center for Undergraduate Research and Scholarship – CURAS*)
- Student organizations and leadership programs (*Student Leadership & Involvement Center – SLIC*)





creighton.joinhandshake.com

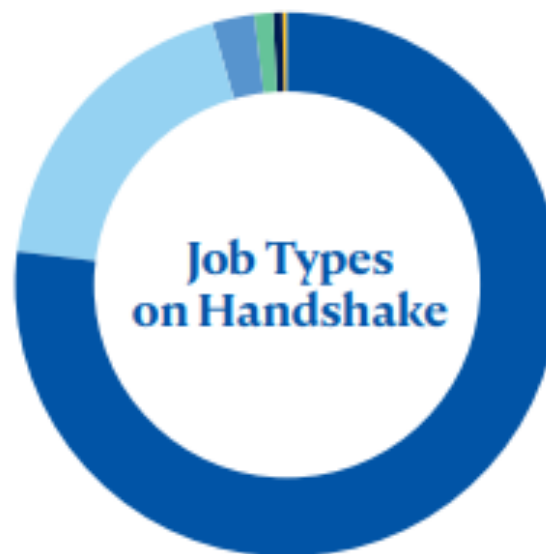
The online career management system for Creighton University students, alumni, and employers.

Handshake offers a large national network of employers, job and internship listings, and a personalized experience for employers and students to connect for opportunities.

17,282 employers
CONNECTED TO CREIGHTON
(as of June 2022)

**3,275 new
employers**
APPROVED
JULY 2021–JUNE 2022

**97,231 job and
internship postings**



- 74,984** Job
- 18,158** Internship
- 2,277** Fellowship
- 1,073** Other
- 485** Volunteer
- 254** On-Campus Student Employment



Jobs

Events

Employers

Inbox

Career center



The best way to get noticed by employers? Reach out.

Attend an event

Learn more about employers or roles you're interested in, directly from the source.



Make your profile stand out

Add key information to match with the most relevant jobs and opportunities.



Creighton University Career Center →

View your school's resources



Jobs

Events

Employers

Inbox

Career center



Jobs

Saved

Search



On-site/remote

Full-time job

Internship

Part-time

All filters

19.6K jobs found

Relevance

Part-time · Internship

Marketing Intern



HDM Corp

Remote · Omaha, NE



Lisa Lechowicz
CEO

Fresh

Full-time · Internship

Summer 2023 Health Equity Fellow



Natural Resources Defense Council
Remote · Washington, DC

Full-time · Internship

Summer Sales Internship (100% In Person in Omaha, NE)



Part-Time · Internship

Marketing Intern



HDM Corp

Remote · Omaha, NE

About the role

Application deadline

May 31, 2023 12:00 AM

Posted date

April 12, 2023

Estimated pay

\$15.00-20.00 per hour

Location type

Remote

US work authorization

Accepts OPT/CPT



Apply

H

Jobs

Events

Employers

Inbox

Career center

Search Saved

Search

Creighton collections

Location

On-site/remote

Full-time job

Internship

Part-time

All filters - 2

12 jobs found

Relevance

Don't miss out!

New jobs are getting added all the time.

Save your search and be the first to know.

Part-time · On-campus

FWS Department of Cultural and Social Sciences Teacher...

Creighton University Federal Work...

On-site · Omaha, NE

Talk to peers

Part-time · On-campus

FWS Lieben Center Student Staff

Creighton University Federal Work...

On-site · Omaha, NE

Part-Time · On Campus Student Employment

FWS Department of Cultural and Social Sciences Teacher Assistant

Creighton University Federal Work Study

On-site · Omaha, NE

About the role

Application deadline	Posted date	Estimated pay
August 31, 2023 12:00 AM	October 27, 2022	\$11.00 per hour
Location type	Work study	
On-site	Eligible students only	

Filters

Job type

Full-Time

Part-Time

Internship

On-Campus

Job

+ More

☒ Work study

Both FWS eligible and non-FWS eligible students will search for on-campus jobs using HANDSHAKE.

FWS job descriptions begin with "FWS".

Before you report to work:

The federal government mandates that all new employees must prove to their employer that they are legally eligible to work in the United States.

1. Complete the online [I-9 form](#) using code 12603
2. Present [I-9 identification documents](#) in person in the Student Employment Office
3. Complete [Federal W-4 Form, Form W-4N, and Direct Deposit Form](#) and bring to the Student Employment Office

An aerial photograph of the Creighton University campus during sunset. The sun is low on the horizon, casting a warm glow over the scene. In the foreground, a large, ornate stone clock tower with multiple crosses on its roof is prominent. To the left, a paved walkway winds through green trees and circular garden beds. In the background, various university buildings are visible under the clear evening sky.

Creighton UNIVERSITY

Contact us at:

studentemployment@creighton.edu / 402.280.2408

careercenter@creighton.edu / 402.280.2722



WELCOME

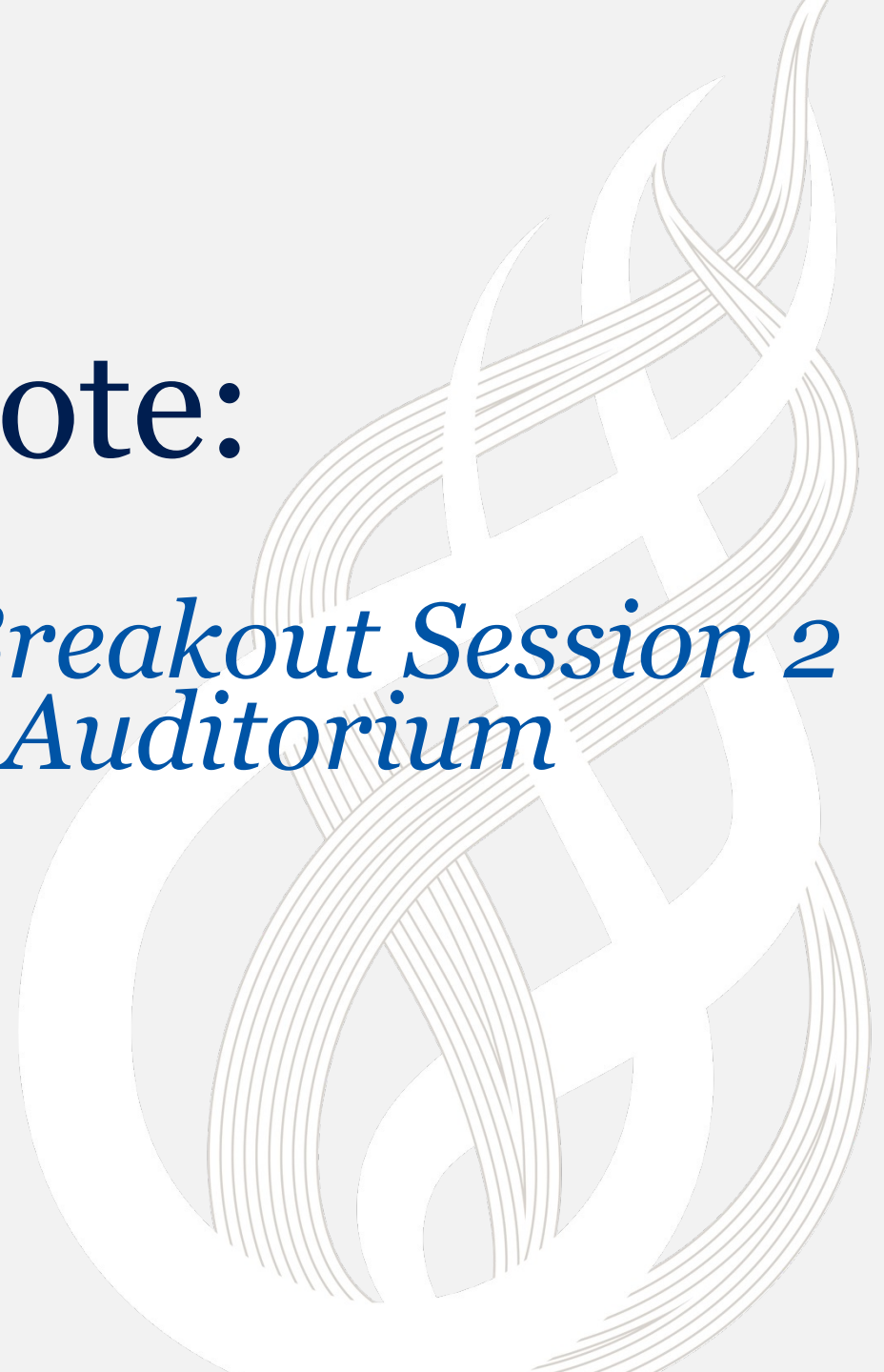
NEW
JAYS

CLASS
of 2027

NEW STUDENT ORIENTATION

Please Note:

*Your Student's Success Breakout Session 2
will be held in this Auditorium*






WELCOME

NEW
JAYS

CLASS
of 2027

NEW STUDENT ORIENTATION



Your Student's Success at Creighton

YOU BELONG HERE.

**CREIGHTON
NEW STUDENT
ORIENTATION**

Creighton
UNIVERSITY

Three Themes

**RESOURCES & PATHWAYS TO HELP
THE CREIGHTON EXPERIENCE IS SECOND TO NONE
PARENTS (AND FAMILY) AS PARTNERS**





We have World-Class
Resources & Pathways to Help.

*“The only mistake you can make
is not asking for help.”*

Sandeep Jauhar



RSP Faculty
Advisor



Faculty &
Staff

Student
Leaders



Success
Hubs

The Success
Center

The Office of Academic Success

@The Success Center



Randi Bibins-Clark, MSW, LCSW
Director, Office of Academic Success

Content Support

1:1 Tutoring
Drop-In Tutoring
Attached Tutoring
Supplemental Instruction

Academic Management

Academic Success Coaching
Academic Success Peer Mentors
Connection to Campus Resources
Hippocampus Success Seminar
BIO Bootcamp & Other Workshops

Study Support

Coordinated Study Groups
Open Study Hours
Online Tips and Resources
Study Partner Sessions

Academic Intervention

Academic Strategies Courses
Academic Intervention and Recovery
Academic Recovery Program
Midterm Outreach
~~CreightonConnect~~ Follow-Up and Referrals

By the numbers

2021-22

6,000

Tutoring Visits

70+

Courses Tutored

60+

Peer Tutors and Mentors

882

Academic Coaching Appointments

40%

of students used
Academic Success



Success Hubs



- Staffed by master's degree level academic success coaches
- Located in each of the first-year residence halls
- Easy access to academic support
- Extensions of The Success Center!





The Creighton Experience is
second to none.

*“If you can’t measure it,
you can’t improve it.”*

Peter Drucker

Retention Rate

Why is this important to Parents/Families?

That you can have great confidence that all the work you and your student put in led you to finding a tremendous community for your scholar/leader.

National	First to Second Year Retention
4yr Public	82%
4yr Private	81%
Retrieved from National Center for Educational Statistics, Institute of Education Sciences, May 2022	

Retention Rate

Why is this important to Parents/Families?

At Creighton, we thank our parents & families for partnering with us in the success of their students. Students find that they BELONG and are VALUED at Creighton.

National vs. Creighton	First to Second Year Retention
4yr Public	82%
4yr Private	81%
CREIGHTON	92%

Retrieved from National Center for Educational Statistics, Institute of Education Sciences, May 2022

Graduation Rates

Why is this important to parents & families?

Graduating from college is critical for confidence, self-efficacy, a life well lived, and long-term earning potential. In short, it is a measure of the return on investment for parents & families.

National	6yr Graduation Rate
6yr Public	63%
6yr Private	68%
Retrieved from National Center for Educational Statistics, Institute of Education Sciences, May 2022	

Graduation Rates

At Creighton, we take this seriously. Measure it, so that you can improve it. Help students belong, help students realize success, help students graduate, and help make sure that they have a first destination.

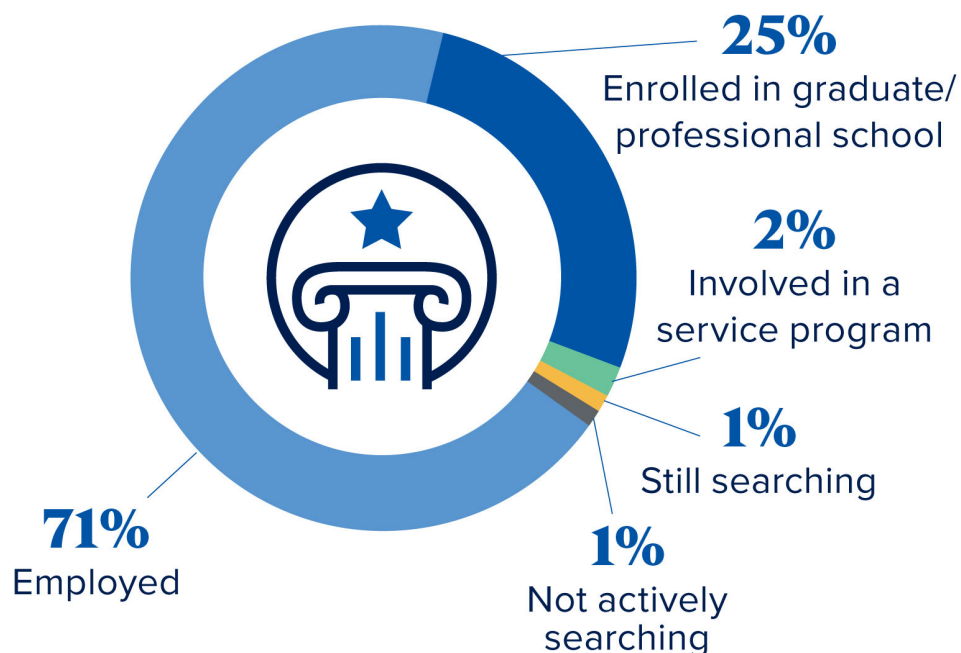
National vs. Creighton	6yr Graduation Rate
6yr Public	63%
6yr Private	68%
CREIGHTON	84% <small>Projected 6yr Graduation rate for the Fall 2018 Cohort (most recent) and includes Professional Students who went direct entry after So/Jr year.</small>
Retrieved from National Center for Educational Statistics, Institute of Education Sciences, May 2022	

2022



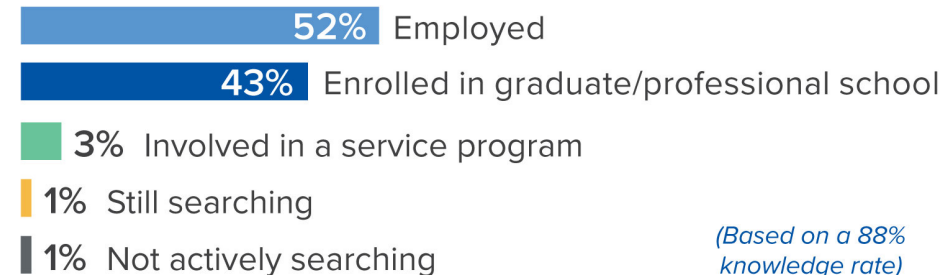
Career Outcomes

99%
Career Outcomes Rate
(Based on a 90% knowledge rate)



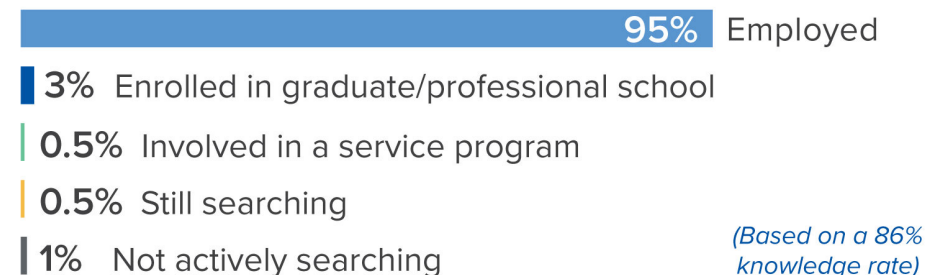
COLLEGE OF ARTS AND SCIENCES

99% Outcome Rate



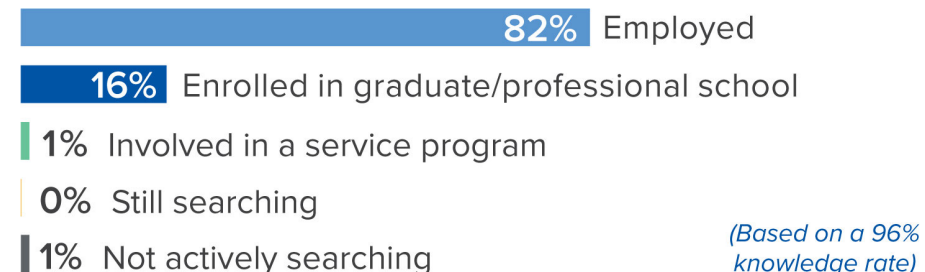
COLLEGE OF NURSING

99% Outcome Rate



HEIDER COLLEGE OF BUSINESS

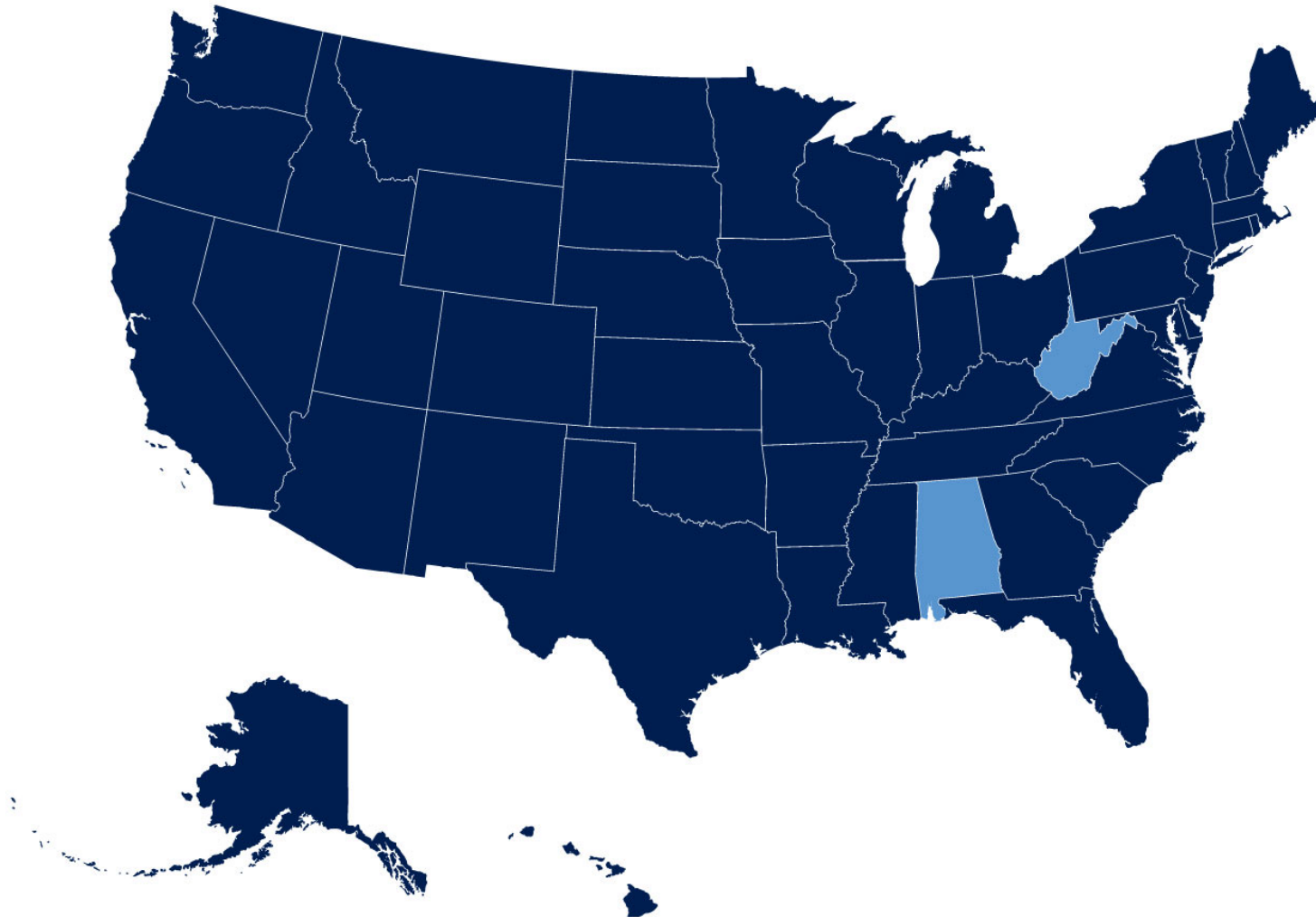
100% Outcome Rate



Where Bluejays Land



Creighton graduates are found in cities across the country and the world.

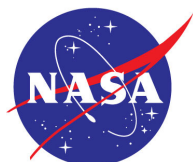


48
States

Plus
Washington, D.C.

+ **9**
Countries

Dominican Republic,
England,
France, Saipan,
Scotland, South Africa,
South Korea, Spain
Uganda



81% Participated in experiential learning

such as an internship or research project

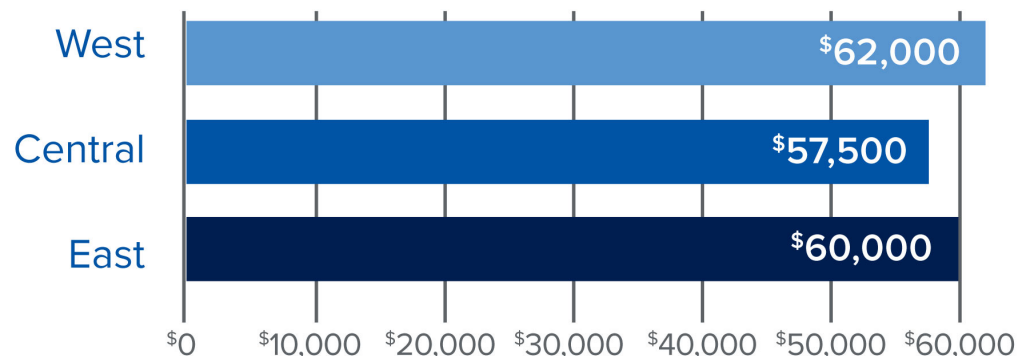
All College of Nursing students complete clinical rotations and long-term practicums as part of their coursework.



\$58,200

Median Salary Overall

Median Wage by Region



PURSuing ADVANCED DEGREES

Creighton University prepares undergraduate students to go into a wide variety of graduate and professional programs.



TOP EMPLOYER INDUSTRIES

1. Health Care
2. Financial Services and Insurance
3. Accounting
4. Technology and Software
5. Education
6. Advertising, Public Relations and Marketing
7. Scientific/Laboratory
8. Consulting
9. Community and Social Services
10. Government/Politics
11. Agriculture and Environmental Services
12. Biotech, Pharma and Life Sciences
13. Transportation and Logistics
14. Nonprofit/NGO
15. Sports, Media and Entertainment
16. Manufacturing
17. Legal
18. Food and Beverage
19. Real Estate
20. Hotel, Hospitality and Tourism
21. Energy and Utilities
22. Military and Defense
23. Fine and Performing Arts
24. Retail/Fashion

NOTABLE INTERNSHIP SITES

3M	Federal Reserve Bank of Kansas City	NASA
Amazon	Fiserv	National Indemnity Company
Berkshire Hathaway Homestate Companies	FNBO	Nebraska Medicine
Boys Town National Research Hospital	Gallup	Omaha's Henry Doorly Zoo and Aquarium
Cargill	GE	PwC
Carson Group	Goldman Sachs	RSM US LLP
Charles Schwab	HDR	Tenaska
CHI Health	JPMorgan Chase & Co.	U.S. Department of Justice
Children's Hospital & Medical Center – Omaha	Kiewit	U.S. Department of State
Conagra Brands	KPMG	Union Pacific
Deloitte	Lutz	UnitedHealth Group
Dignity Health	Make-A-Wish	Valmont Industries, Inc.
ESPN	Mayo Clinic	Viterra
EY	Mutual of Omaha	Werner Enterprise

NOTABLE GRADUATE AND PROFESSIONAL SCHOOLS

A.T. Still University	Edinburgh Napier University	Rush University	University of Nebraska Medical Center
Arizona State University	George Mason University	University of Iowa	University of North Carolina at Chapel Hill
Baylor University	Georgetown University	University of Kansas	University of Pennsylvania School of Dental Medicine
Boston University	Johns Hopkins University	University of Kansas Medical Center	University of Southern California
Columbia University	London School of Economics and Political Science	University of Minnesota Twin Cities	Washington University in St. Louis
Creighton University	New York University	University of Missouri	
Duke University	Regis University		



We see Parents & Family
Members as Partners.

“We are not going to keep family members on the sidelines.”

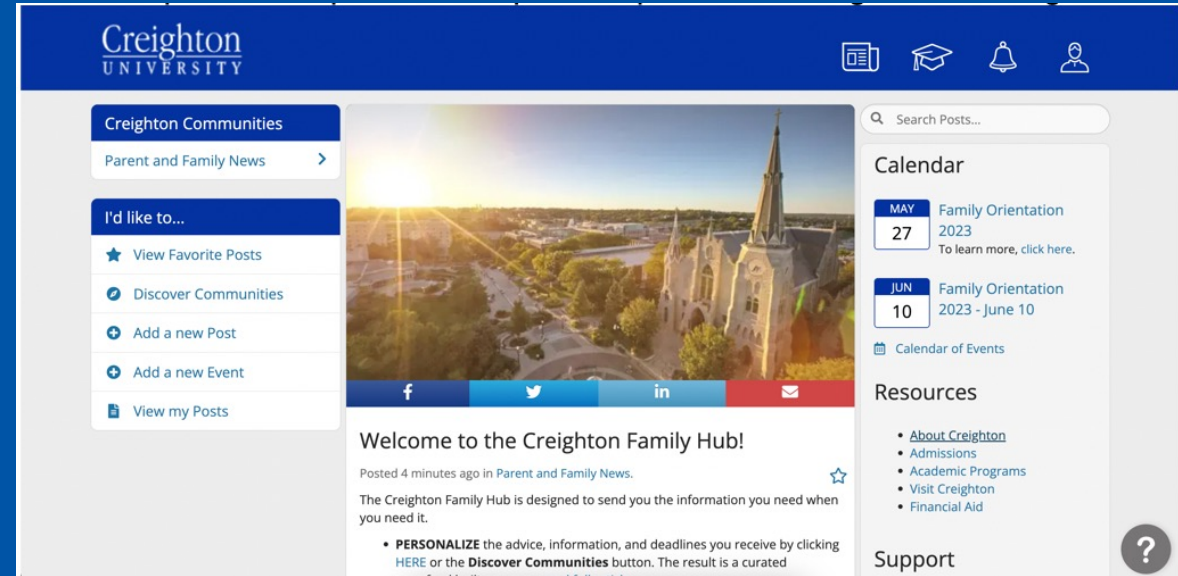
Wayne Young, Jr., BA '93, PhD

The Office of Student and Family Support @The Success Center



Anne DeLuca, M.A.
Director, Office of Student and Family Support

- The Success Desk
- Bluejay Family Portal
- Bluejay Family Newsletter
- Bi-monthly Bluejay Family Live Panels
- Programming to build affinity and promote persistence



The Office of Student and Family Support @The Success Center



*They reminded my daughter
of her capabilities and
renewed her faith in herself
and in Creighton. She soon
found her footing and
became more self-assured"*

- M. Vikki Cervantes,
Mother of Sabori Cervantes '24

The Success Desk

402-280-1212

Family@creighton.edu

An aerial photograph of Creighton University at sunset. The sun is low on the horizon, casting a warm glow over the campus. In the foreground, a large, ornate stone clock tower with multiple crosses on its roof dominates the right side. To the left, a paved walkway winds through lush green trees. In the background, various university buildings are visible under the twilight sky. A small rainbow is visible in the air near the center of the image.

Creighton UNIVERSITY

Contact us at
Success@creighton.edu | 402.280.1212
Creighton.edu/Success



WELCOME

NEW
JAYS

CLASS
of 2027

NEW STUDENT ORIENTATION

Dollars and Sense - Financial Aid Office

**CREIGHTON
NEW STUDENT
ORIENTATION**

Creighton
UNIVERSITY

Financial Aid Information

- **TO APPLY FOR FINANCIAL AID, YOU MUST SUBMIT A FAFSA AT WWW.FAFSA.ED.GOV.**
- **IT'S NOT TOO LATE TO APPLY!**
- **YOU MUST REAPPLY EVERY YEAR.**
- **RETURN ANY REQUESTED DOCUMENTATION TO THE FINANCIAL AID OFFICE.**



Cost of Attendance Budget

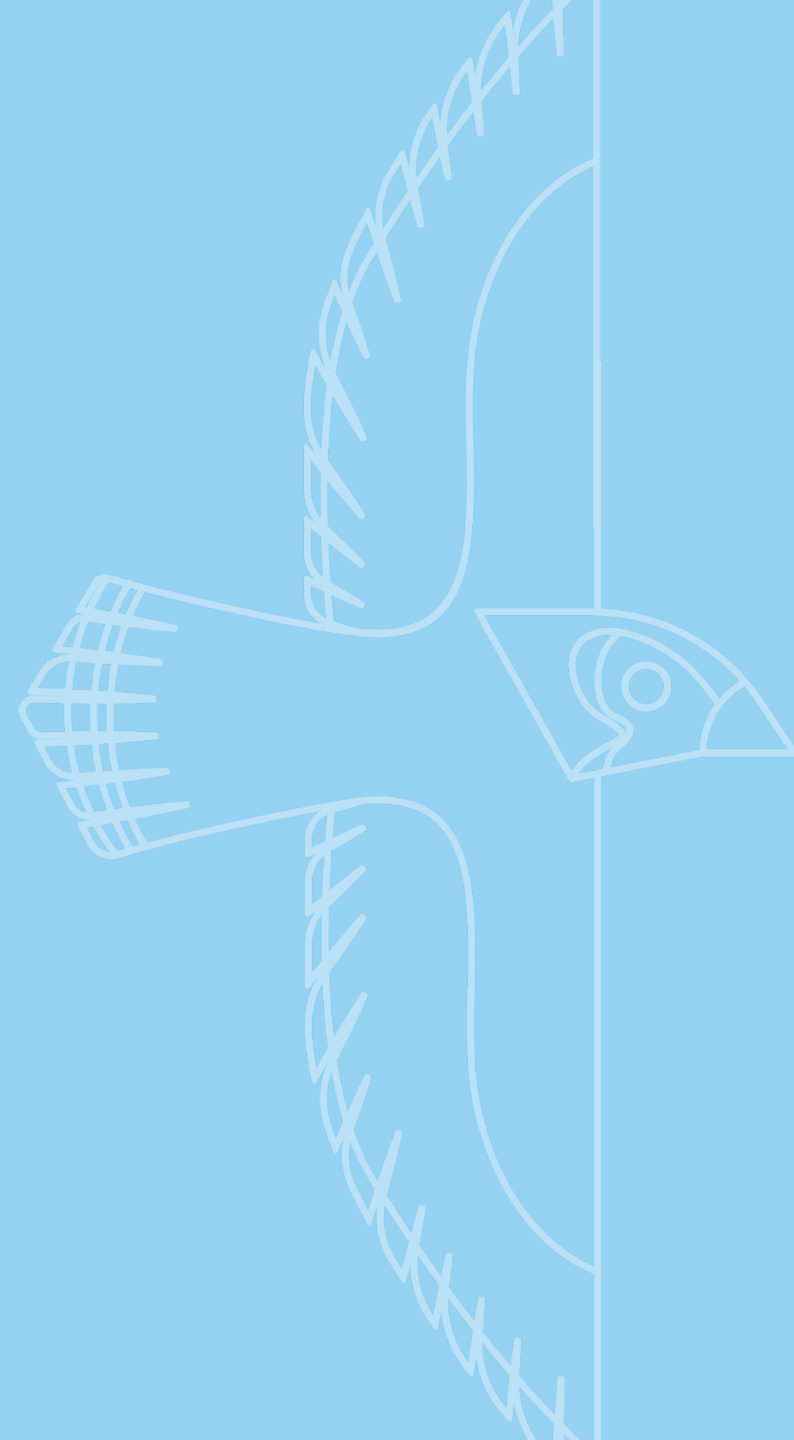
- ***TUITION/FEES**
- ***FOOD/HOUSING**
- **BOOKS/SUPPLIES**
- **PERSONAL**
- **TRANSPORTATION**

*** INDICATES BILLED/DIRECT COSTS**



Financial Aid Credits

- **SCHOLARSHIPS (ADMISSIONS)**
- **GRANTS (FINANCIAL AID OFFICE)**
 - Creighton University Grant
 - Federal/State Grants (Pell, SEOG, NOG)
- **LOANS**
 - Creighton Undergraduate Institutional Loan
 - Direct (subsidized, unsubsidized)



Other Financing Options

- **PARENT LOAN FOR UNDERGRADUATE STUDENTS (PLUS)**
- **ALTERNATIVE/PRIVATE STUDENT LOANS**
- **‘OTHER’ (529/EDUCATIONAL SAVINGS PLANS, HOME EQUITY, PERSONAL LOANS)**
- **PAYMENT PLAN**



‘Other’ Payment Options

- **529 PLANS, COVERDELL, UTMA, UGMA, ETC.**
 - Speak directly with the plan holder regarding how to request your funds and what, if any, documentation is needed.
- **HOME EQUITY LINE OF CREDIT, PERSONAL BANK LOANS, ETC.**
 - Work with your personal banker on terms, amounts, repayment, etc.



Financial Aid Office

[HTTPS://WWW.CREIGHTON.EDU/FINANCIALAID](https://www.creighton.edu/financialaid)

STUDENTFINANCIALSERVICES@CREIGHTON.EDU

402.280.2731 | 800.282.5835

MIKE AND JOSIE HARPER CENTER, SUITE 1100





Questions

Jenny Witcofski

402.280.2340

jenniferwitcofski@creighton.edu

Jaydrop.Creighton.edu/filedrop/financialaid

**CREIGHTON
NEW STUDENT
ORIENTATION**

Creighton
UNIVERSITY

Dollars and Sense

STUDENT EMPLOYMENT

SARAH DE POOTER

Why work on campus?

- Scheduling is Convenient and Flexible
- Make Connections
- Discover Interests
- Gain Experience in Field of Study
- Improve Career Readiness Competencies
- Earn Money

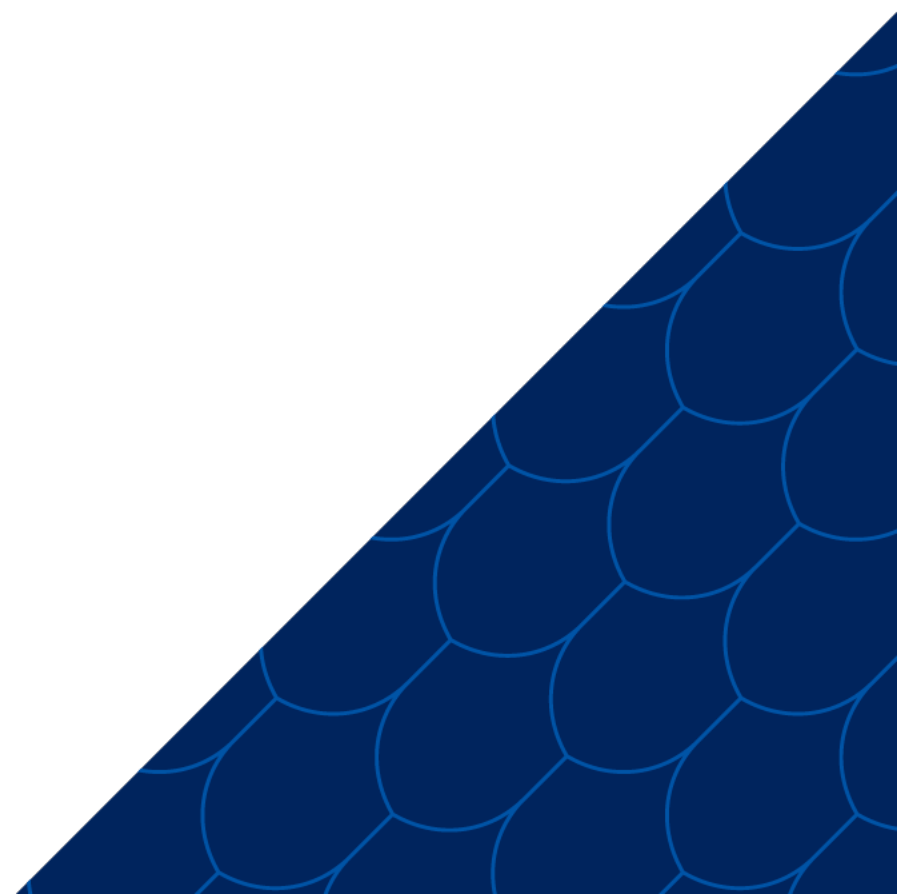




Creighton University offers many employment opportunities:

1. Federal Work Study (primarily federally funded)
2. Student Employment (Creighton funded)

Federal Work Study (FWS)

- Eligibility is based on need
 - Listed as part of your financial aid offer
 - \$3,400/year typical eligibility
 - 8-10 hours/week on average
 - FWS dollars are not a credit to your tuition bill
- 

You've been awarded FWS, what's next?

1. Accept Offer of FWS in [NEST](#)
2. Submit [FWS Agreement](#)
3. Apply for FWS Jobs on [Handshake](#)



[Handshake](#) is Creighton's online career management system that offers many benefits, including a search function for on-campus student employment, a mobile friendly interface and a personalized experience for students and employers to connect for opportunities.

handshake

For You **Jobs** Events Students Career Center Jeremy

Job Title, Employers, or Keywords City, State, Zip Code, or Address

Full-Time Job Part-Time Internship **On-Campus** Filter Clear All

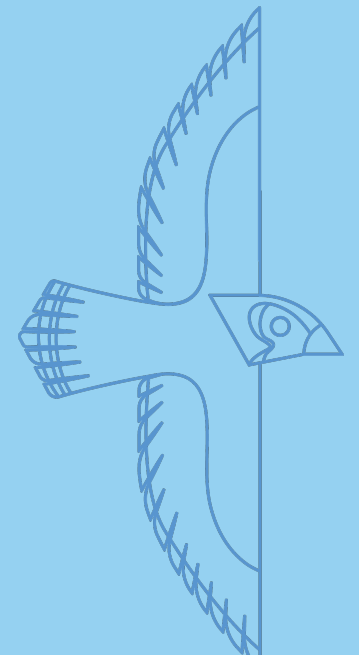
1 Creighton student has worked here

STUDENT TUTOR - MTH Drop-In Tutor (MTH 205)
Creighton University Creighton EDGE Academic Success 4 Reviews
Part-Time On Campus Student Employment Apply before Saturday, 4/27
Creighton University, NE All Employer Preferences Match
Danielle, Ben, Alec and 17 others have worked here

FWS Business Service Center 001150
Creighton University Federal Work Study
Part-Time On Campus Student Employment Apply before Monday, 12/31
Creighton University, NE All Employer Preferences Match
Jillian, Nicole, Kaliyah and 15 others have worked here

Both FWS eligible and non-FWS eligible students will search for jobs using HANDSHAKE.

FWS job descriptions begin with “FWS”.



Rules and Regulations

- All Creighton students are limited to working on average a maximum of 29 hours per week for all campus jobs combined.
- During breaks (fall, Christmas, spring, and summer), students are limited to 40 hours per week for all campus jobs combined, as long as their yearly average is no more than the specified 29-hour limit.
- Federal work study students are limited by the amount of their award offer.
- International students must follow their Visa requirements.

Understanding Pre-Employment Forms



Before you report to work:

The federal government mandates that all new employees must prove to their employer that they are legally eligible to work in the United States.

1. Complete the online [I-9 form](#) using code 12603
2. Present [I-9 identification documents](#) in person in the Student Employment Office
3. Complete [Federal W-4 Form, Form W-4N, and Direct Deposit Form](#) and bring to the Student Employment Office

How do I get paid?

Students are responsible for logging their time accurately and on time via [MyHR](#)

Create Time Card: Report Time ☆

Next Save Save and Close Can

Person Information : Sarah DePooter

Time Card Details : 5/23/22 - 5/29/22

Time Entry Time Totals

Reported Hours 0.00 Absence Hours 0.00 Scheduled Hours 40.00

Actions View Format Add Row Below Freeze Detach Wrap

Assignment Number	Monday, May 23			Tuesday, May 24			Wednesday, May 25			Thursday, May 26			Friday, May 27			Saturday, May 28		
	Start	Stop	Quantity	Start	Stop	Quant	Start	Stop	Quantity	Start	Stop	Quant	Start	Stop	Quan	Start	Stop	Quantity
1																		



Dollars & Sense

MONIQUE DONAHOE
ENROLLMENT SERVICES COUNSELOR
STUDENT FINANCIAL SERVICES



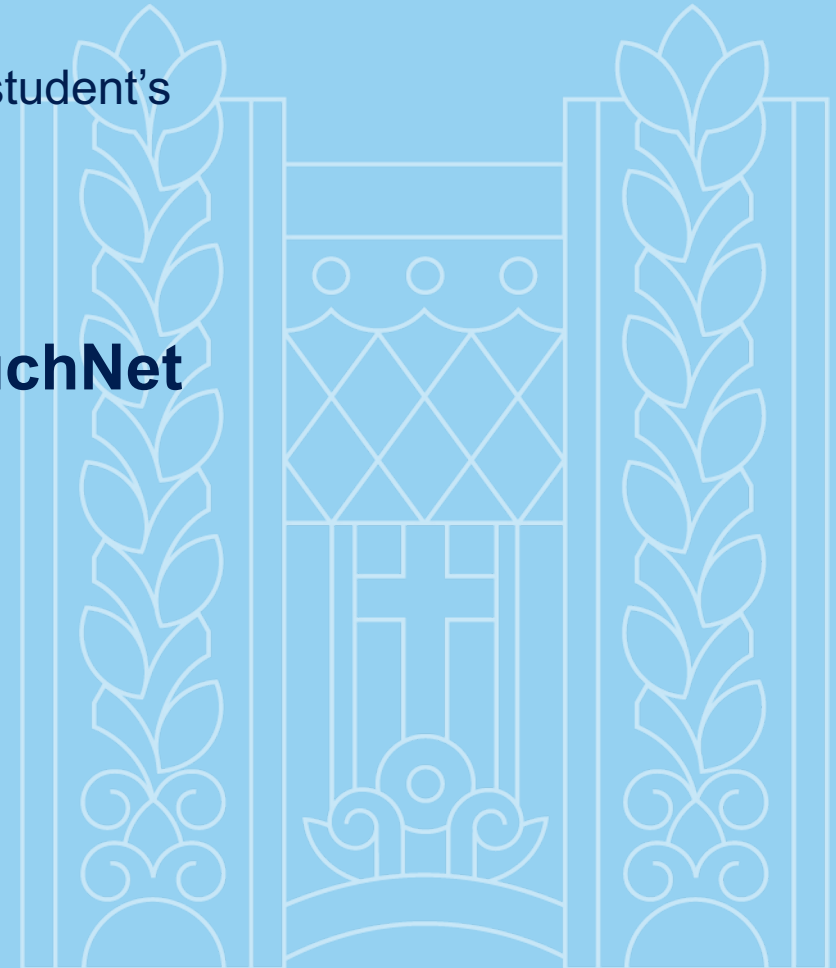
Taking Care of Business

I am paying the bill, why do I need authorization?

- Family Education Rights to Privacy Act (FERPA)
- Will NOT be able to discuss or provide financial information without student's authorization

Authorize parents or others in BOTH the NEST & TouchNet

- Receive statements via email
- Make a payment or set up payment plan
- Review charges and credits on account
- Access tax form- 1098 T



Billing Statements

Who is it sent to and how?

- Student's Creighton email
- TouchNet Authorized Parties' email
- Can view & print statements from NEST/TouchNet

When will a statement be emailed?

- Mid-July for Fall Semester
- Early-December for Winter Session
- Mid-December for Spring Semester

When is the balance due?

- The first day of the term/semester

Account Charges, Credits & Changes

Charges

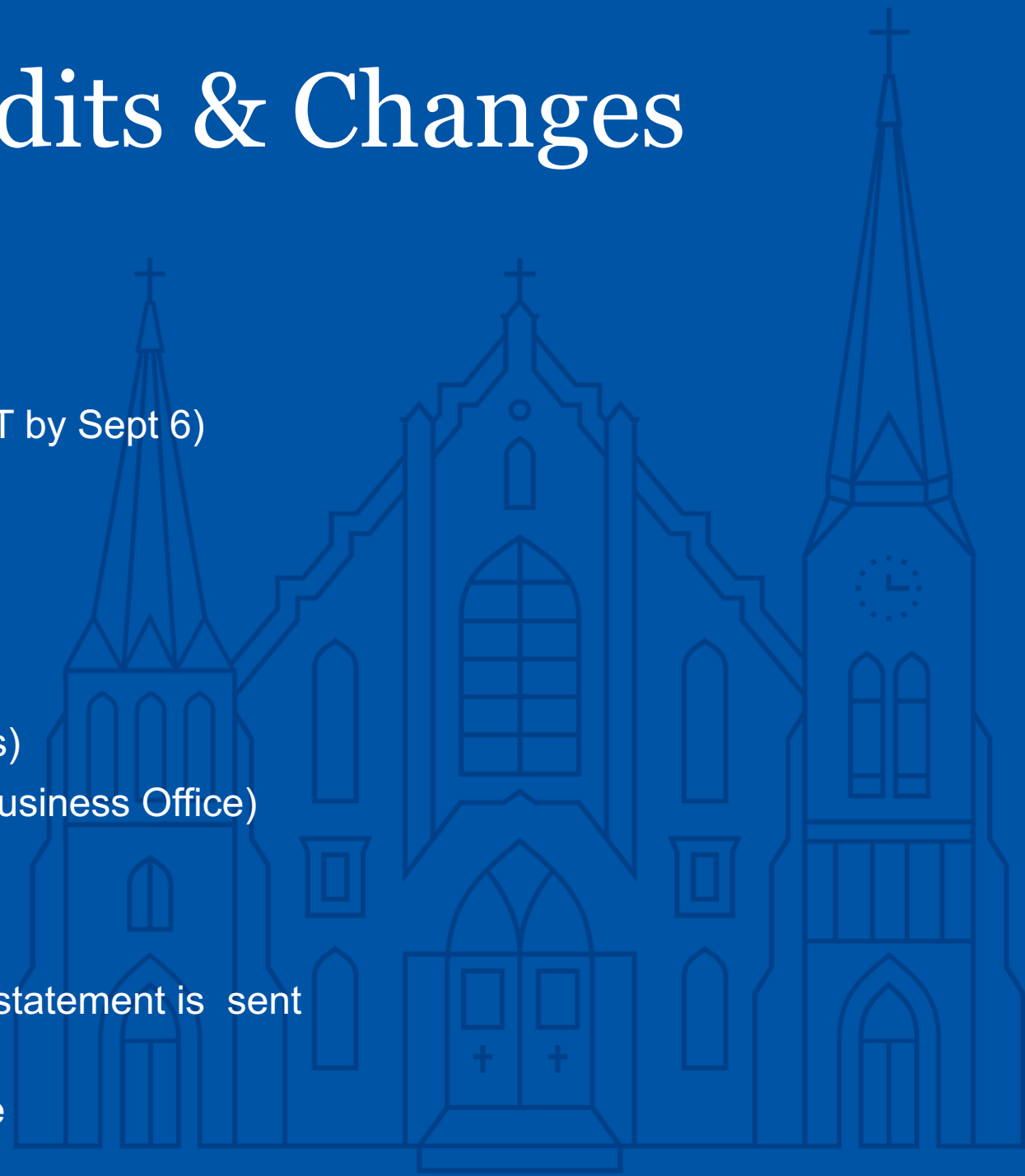
- Tuition & University Fees
- Room & Board
- Health Insurance(waiver request due via the NEST by Sept 6)
- Orientation fee
- Parking, course materials, academic and lab fees

Credits

- Financial Aid Credit(scholarships, loans and grants)
- Outside Scholarships(once check is received by Business Office)

Changes

- Charges and credits can be added after the initial statement is sent (i.e. Parking Permit)
- Check account to assure accuracy on balance due



Payment Options

Online

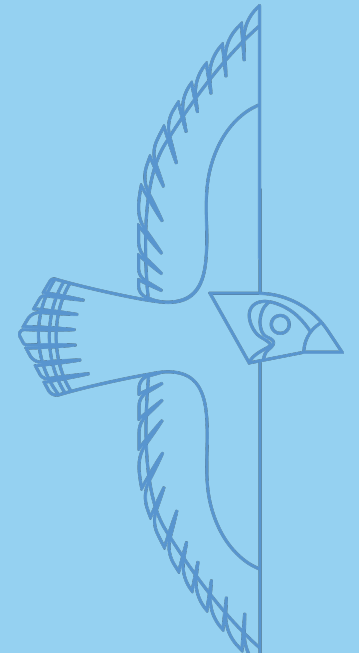
- TouchNet Student Account Center
- Automatic bank payment (ACH) -no fee
- Debit or Credit Card- 2.85% fee

Mail

- Check must include student's NETID
- 529 College Savings Plans- allow at least 10-15 business days before due to receive
- Mail to Business Office -address on our webpage

Payment Plan

We Do Not Accept In-Person Payments



Payment Plan

Partnered with TouchNet

- Semester-based payment plan(must enroll EACH semester)
- 5-month & 4-month payment options(deadlines Aug 4 & Sept 4)
- No interest
- Payment Form
 - Automatic bank payment (ACH)-no fee
 - Credit/debit card-2.85% fee
- \$50 enrollment fee & \$100 down payment per semester
- If a change is made to student's schedule, parking permit or late financial aid credit applied to account-adjustments to payment plan are automatic

Refunds

Direct Deposit to Student

- Student can sign up for Direct Deposit of Refunds via NEST
- Expedite refunds
- Routing and Account number
- Email update sent to Creighton email before deposited

Parent PLUS Loan refund

- A check will be mailed to parent
- Parent may authorize refund to be issued to student
- Authorization is made when applying for the PLUS loan



Accounts with Unpaid Balances

Monthly statements will be emailed

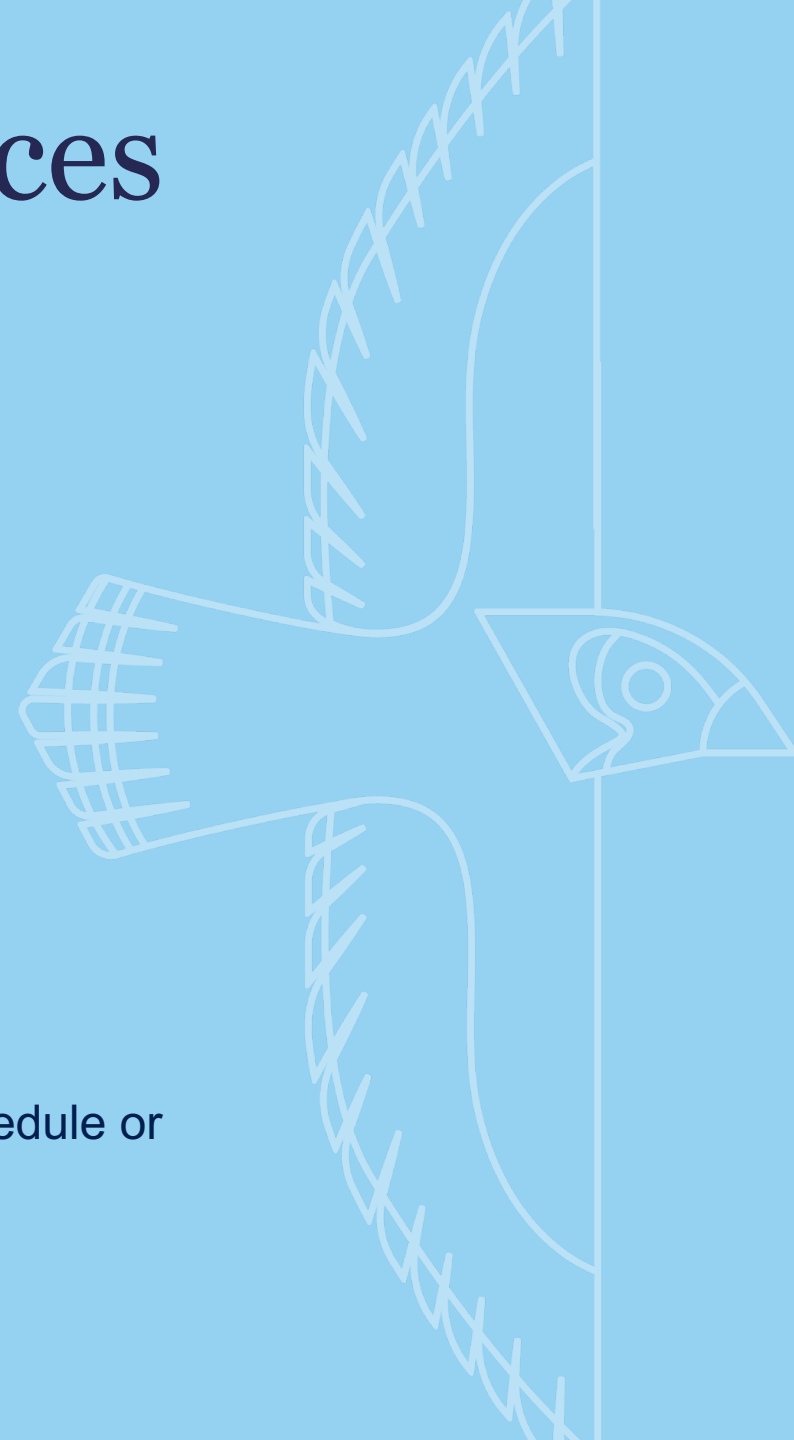
- Student's CU address
- Authorized parties in TouchNet

Late Fees

- Assessed each month

HOLDS

- Student will not be able to register for classes, make changes to schedule or get a transcript



Creighton
UNIVERSITY

Admissions & AidAcademicsStudent ExperienceAboutMore +

Home / Business Office

Business Office

Statement and Payment Information

Student Loan Department

Policies

Other Information

The Business Office is dedicated to helping Creighton students and families with e-bill statements for tuition, fees, room, board and other related fees. We process payments, set up payment plans, and issue refunds. Students and their Authorized Users will receive an e-bill notification when the statement becomes available. The statement can be viewed by the student via [NEST](#) or for an authorized user via [TouchNet](#). Our office looks forward to assisting you!

Please mail your 529 payments to:
Creighton University Business Office
780330 California Plaza
Omaha, NE 68178-0330

Creighton
UNIVERSITY

Admissions & AidAcademicsStudent ExperienceAboutMore +

Authorized Users

View the PDF document for steps to set up authorized users, such as parents and guardians, in NEST and TouchNet.

Set Up Authorized Users

Summer 2023 Dates

Summer 2023 term begins May 15 for undergraduate students. Full payment is due on the first day of the term. Summer 2023 statements will be emailed to students and authorized users mid-April.

Summer 2023 Payment Plans

GradGuard Tuition Insurance

Creighton
UNIVERSITY

Admissions & AidAcademicsStudent ExperienceAboutMore +

Frequently Used Links

Direct Deposit of Refunds

Payment Plans

Holds

Withdrawals

International Payments

Student Checklist

Services for Faculty, Staff and Students

Notary

Student Financial Services

Office Hours:

Mon. - Fri. 8 a.m. - 4:30 p.m. (Central Time)

Harper Center, Suite 1100

402.280.1110

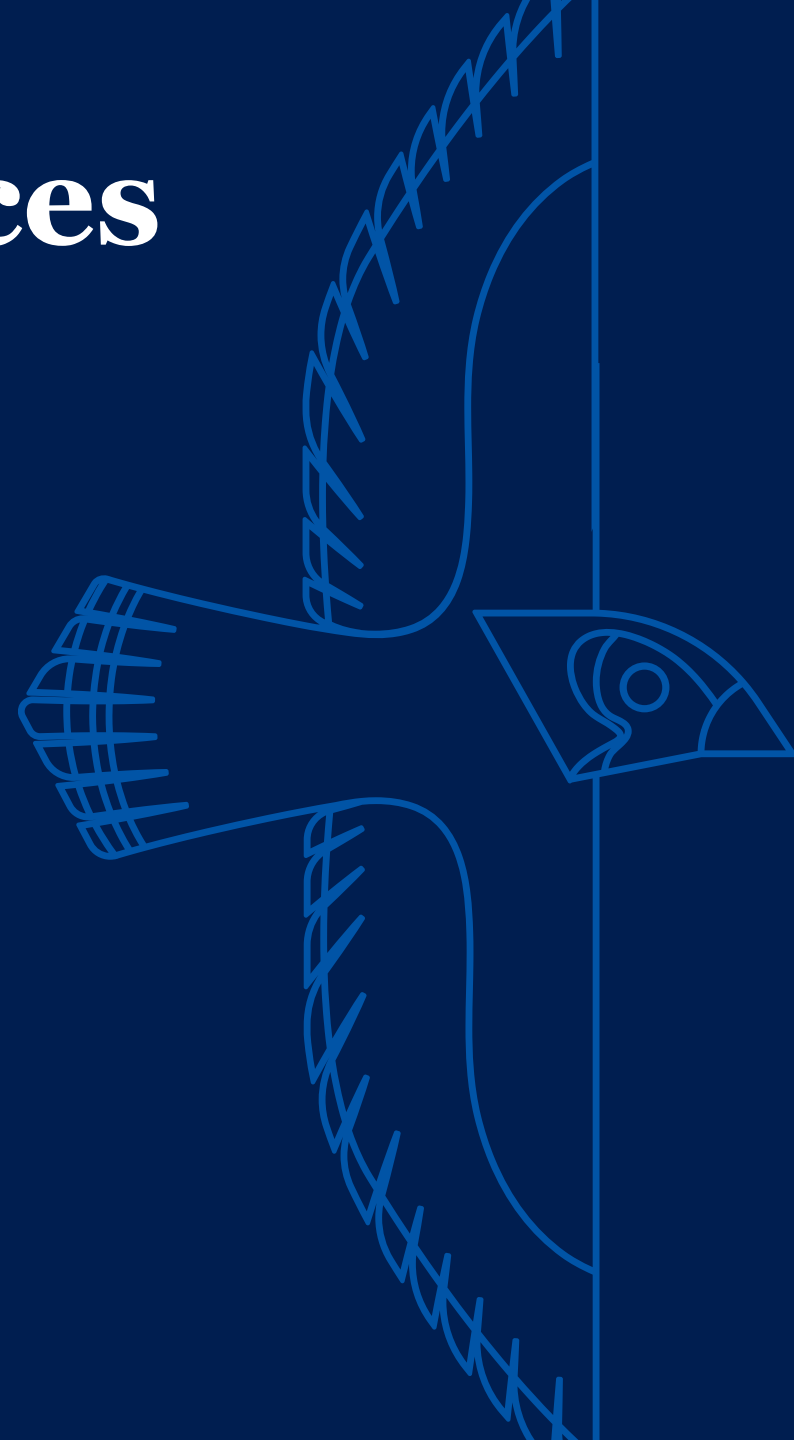
Mailing Address:

780330 California Plaza

Omaha, NE 68178-0330

Email:

studentfinancialservices@creighton.edu





WELCOME

NEW
JAYS

CLASS
of 2027

NEW STUDENT ORIENTATION

**CREIGHTON
NEW STUDENT
ORIENTATION**

Creighton
UNIVERSITY

Keys to Success: Summer Edition

OFFICE OF ACADEMIC SUCCESS | STUDENT SUCCESS


RANDI BIBINS-CLARK, MSW, LCSW

Director of Academic Success

RYAN MCLAUGHLIN, MS

Assistant Director of Academic Success

Goals for this session:

1. Learn practical tools and guidance to help students and families navigate the transition from high school to the Creighton classroom.
 2. Learn about resources available from the Office of Academic Success, Center for Advising Resources and Support (CARS), and Students Accessibility Services
 3. Recognize the importance of maintaining perspective and an open mindset in the face of new academic expectations.
- 



Coming soon...

Differences between HS and college

	High School	College
Point of Contact	Family	Student
Access to info	Accessible to families	Accessible through student
Class Time	990 hrs/year	360 hrs/year
Studying	Test-based 1-2 hrs/day 10-15/week 80/20	Consistent 4-5 hrs/day 25-30/week 20/80
Assessment	Multiple assessments	Fewer assessments
Instructors	Educators	Content Experts
Freedom	Limited External	Unlimited Self-imposed
Proximity	Environment	Student
Seeking help	Stigma	Creighton culture

Recognize the differences and be ready to adjust and try new and different strategies

School should still be a full-time job - 35 hours/week!

Many of the challenges first-year students encounter can be linked to “freedom”

- Time management is the #1 struggle for first-year students
- Being on time vs managing time
- Routines and structure are important and take time to develop

The Creighton Way: USE YOUR RESOURCES

Using Student Success resources is part of the culture at Creighton

- **Office of Academic Success**
- **Center for Advising Resources and Support**
- **Student Accessibility Services**
- John P. Fahey Career Center
- Military and Veteran Affairs
- Office of Student and Family Support
- Student Support Services

Free, voluntary, and available to ALL students, not just struggling students.

Students who are willing to ask questions and use resources when needed are more successful and are less anxious.

Be proactive - use resources before issues arise (and to prevent issues from arising)!

Office of Academic Success

What we say:

Academic Success provides opportunities for students to thrive in Creighton's rigorous academic environment.

What we do:

- Tutoring
- Academic Success Coaching
- Academic Success Peer Mentors
- Study Supports
- Seminars and Workshops
- Academic Strategies Courses
- Academic Intervention Programs

Free, friendly, and accessible

Available to all students

Academic Success

by the numbers

6,000+

Tutoring visits/year

100+

Courses covered

70+

Peer tutors and mentors

800+

Academic coaching visits/year

4/2

Professional Staff/Grad
Assistants

40%

of Creighton students used
Academic Success services last
year!

Office of Academic Success

Why you'll love us:

- We make it easy! 😊
- Knowledgeable and helpful
- Easy to look up schedules and make appointments online
- Our Semester-at-a-Glance calendar! (Available Welcome Week)
- Great locations



Where to find us:

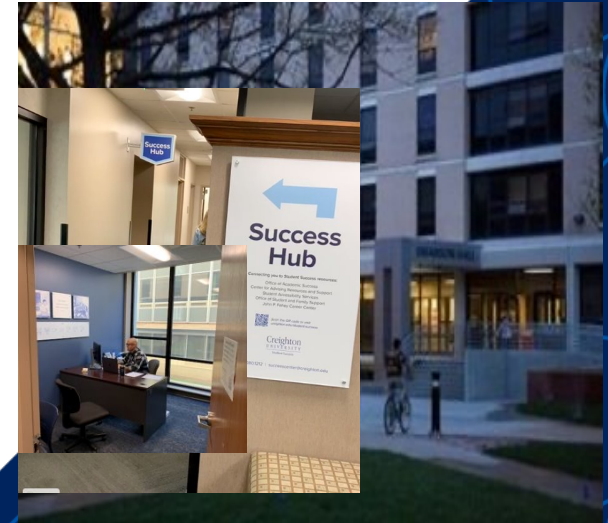
Online: creighton.edu/academicsuccess Twitter: @CreightonDSS

@The Success Center

- Reinert Library Lower Level (bottom of the brick stairs)
- Primary home for tutoring, Academic Success Coaching, Success Desk

Success Hubs!

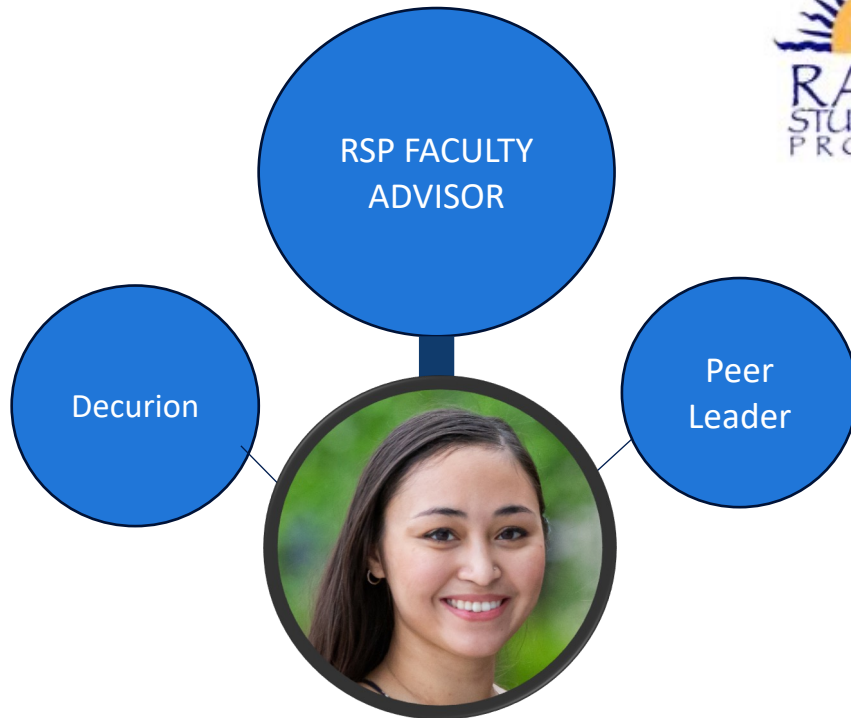
- Located in each first-year residence hall
- Academic Success Coaching, workshops, drop-in/evening hours, easy place to ask questions & get connected



Center for Advising Resources and Support

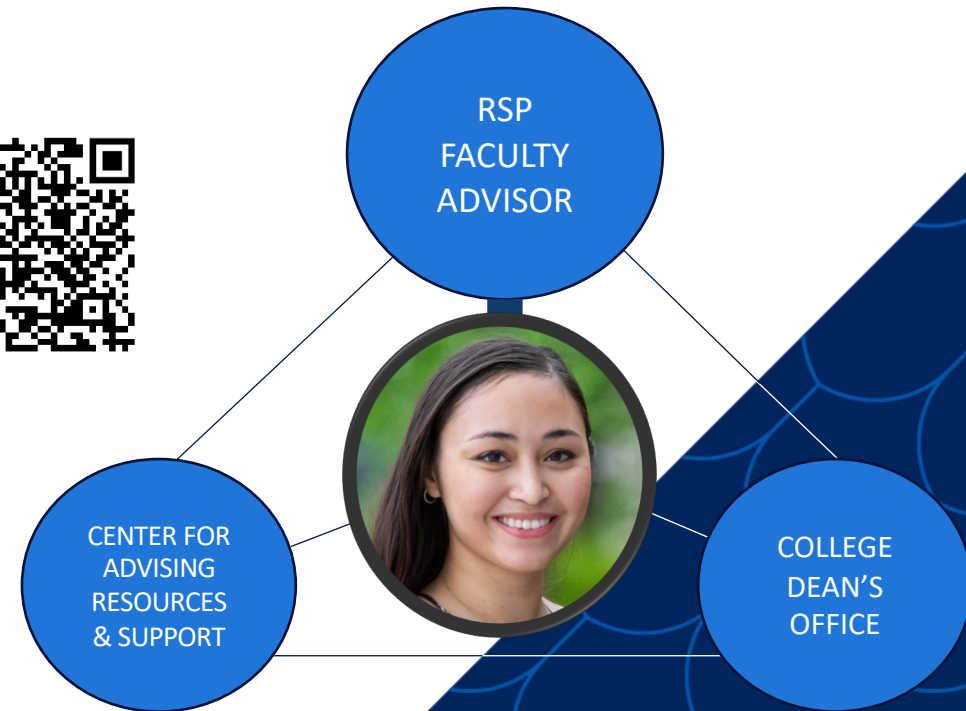
Wraparound first-year advising

- RSP course meets throughout the semester
- Faculty Advisor
- Decurion and Peer Leader



Connection to an advising community

- Secondary advising for pre-health/pre-law students
- Advisors in the college dean's offices are available for tricky transfer and major questions



Student Accessibility Services

Using Accommodations – Why?

Because Creighton has an office that coordinates the process through which qualified students request and receive reasonable accommodations in accordance with policy and regulations.

Before classes begin

- You have a diagnosed disability or medical condition that necessitates assistance for you to reach your full potential.
- You had a 504 or IEP plan in high school and would like to see how it can be applied at Creighton.
- You have an approved Emotional Support Animal (ESA).

After classes begin

- You find that you are struggling significantly due to verified or suspected disability, either temporary or permanent.
- You experience a medical situation that requires assistance for you to remain on track.

Student Accessibility Services

Using Accommodations – How?

1. Apply for accommodations with the Office of Student Accessibility Services (SAS)
 - Confidential online portal where you share your information, including medical/clinical reports and relevant HS documentation
 - **Should be completed in the summer**
2. Participate in an intake appointment
 - Meeting with a SAS staff member to gather more details
 - Generally scheduled within 5 days of application
3. Receive and register your accommodations through the portal
 - As the semester is beginning, you choose when and where to use your accommodations

Take Away 1 – The student owns each step of this process

Take Away 2 – It must be students (not parents or family members)



Student Accessibility Services
Old Gym, 4th Floor
402-280-2195
SAS@creighton.edu
creighton.edu/student-success

Tips from Your Friends in Academic Success

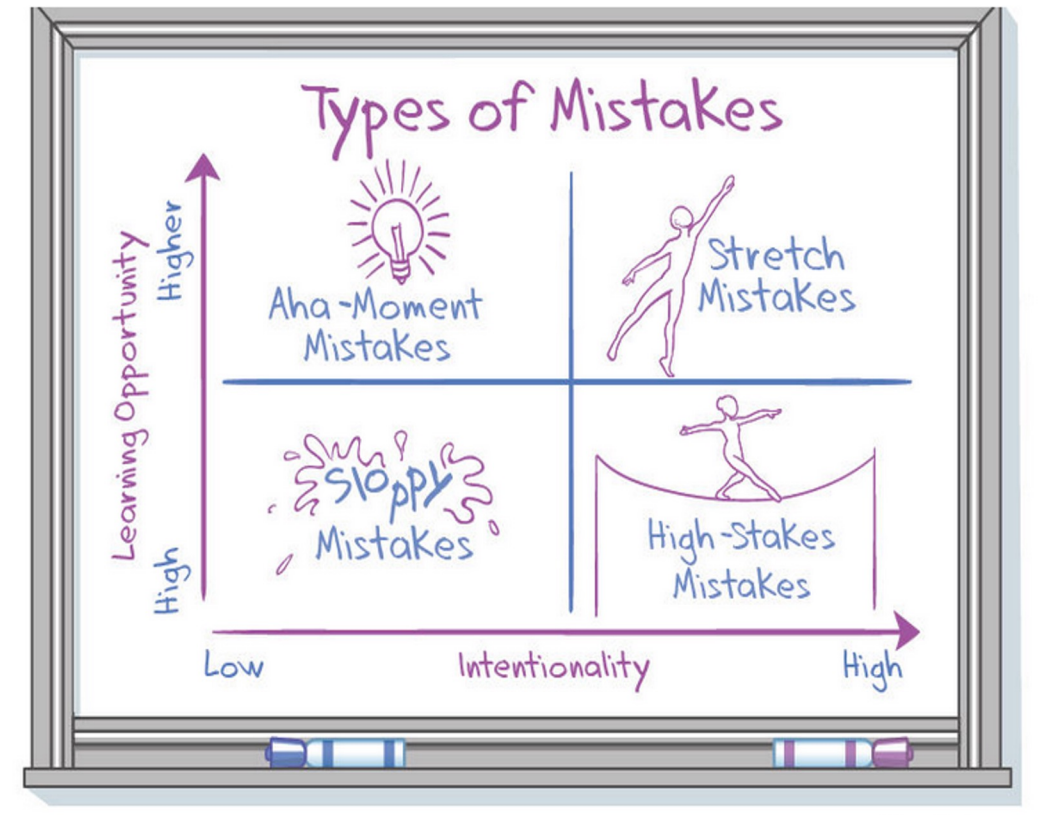
Students: Ask lots of questions. Get to know the resources. USE the resources.

Families: Don't get carried away with the questions... 😊 Get to know the resources. Encourage your student to USE the resources.

Students: Start making it easier for your parents to treat you like a young adult.

Families: Practice treating your student like a young adult.

Everyone: Be ready to have fun, learn a lot, be challenged, and make mistakes.



We'll be with you through the transition!

We'll be here to welcome you during move-in/Welcome Week

Keys to Success Pt. 2, August 14th (the day before classes start)

Semester Set-Up in the Success Hubs

Tutoring starts Monday, August 21st (the first full week of classes)

Success Center/Success Hub Open Houses

Hippocampus Success Seminar – register now!

TSC 120: Strategies for Student Success

If you get lost, stop by the Success Desk and we'll help you get un-lost!

Office of Academic Success



RANDI BIBINS-CLARK, MSW, LCSW

Director of Academic Success

randibibins-clark@creighton.edu

The Success Center, RAML L27

RYAN MCLAUGHLIN, MS

Assistant Director of Academic Success

ryanmclaughlin1@creighton.edu

Swanson Hall, Rm. 108

REBECCA BEILE, MED

Assistant Director of Academic Success

rebeccabeile@creighton.edu

Swanson Hall, Rm. 108

TAUNYA PLATER, MSOL, MS-NCR

Director of Academic Success

tplater@creighton.edu

The Success Center, RAML L27

WELCOME

to the family

NEW
JAYS

CLASS
of 2027

NEW STUDENT ORIENTATION



WELCOME

NEW
JAYS

CLASS
of 2027

NEW STUDENT ORIENTATION

**CREIGHTON
NEW STUDENT
ORIENTATION**

Creighton
UNIVERSITY

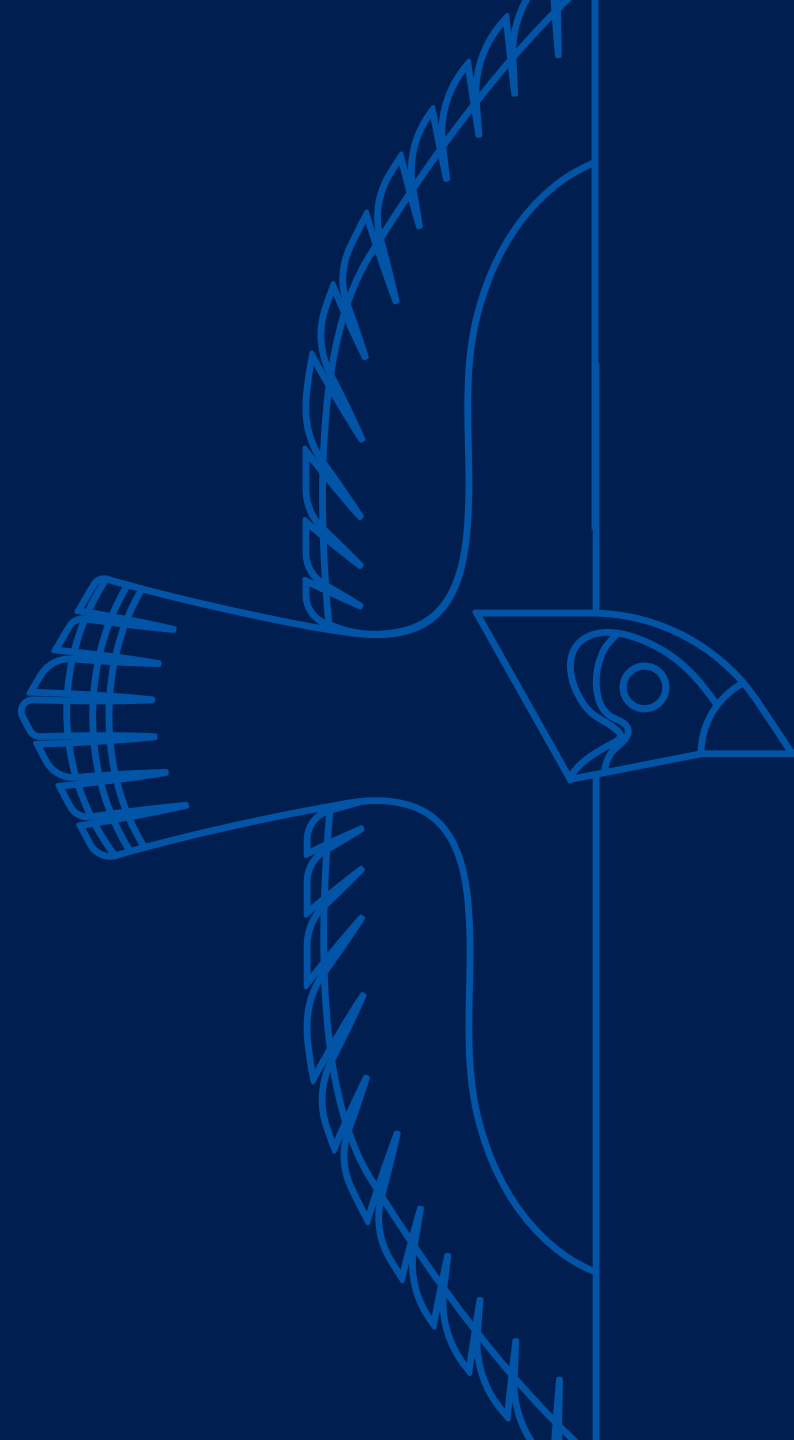
Student Wellbeing & Success

WITH:

**OFFICE OF STUDENT & FAMILY SUPPORT
STUDENT HEALTH EDUCATION & COMPLIANCE
STUDENT COUNSELING SERVICES**

Agenda

1. Introduce Offices
2. Share different topics that our office can support
3. Illustrate our commitment to teamwork.



Parents and Families at Creighton

Creighton University views parents and family as partners in student success. When you join the Bluejay Family we work as a team to overcome obstacles. Our outreach is strategic, efficient, and personalized to every student and family.



Parents and Families at Creighton

Student **VS** Challenge

Student + Family **VS** Challenge

Student + Creighton **VS** Challenge

Student + Family + Creighton **VS** Challenge



Partnering with students, parents, and families

- Academic related concerns
- Mental health concerns such as anxiety and depression
- Student has alerts for ongoing attendance or other hurdles indicated by faculty/staff
- Family member passes away
- Sudden change in income or circumstances at home
- Injury/illness (concussion, car accident, new diagnosis, chronic health concern)
- Student feels they are “not fitting in” and are having social difficulties
- Medical issues that are impacting a student’s overall wellbeing
- Feelings of homesickness
- Changing major or identity struggle
- Parents or family report concern about their student
- Navigating resources, offices, deadlines, and paperwork



Office of Student and Family Support



One stop shop for parents and families

1. The Success Desk

402-280-1212

Family@creighton.edu



2. Bluejay Family Live Panels



3. Bluejay Family Newsletter

Help Your Bluejay Prepare for Summer

Dear parents and families,

Summer is nearly here. While most Bluejays get a break from classes, there are lots of ways to keep your Bluejay engaged and help them make the most of their summer break.

Keep communication going. [Reaching out to advisors](#) and emailing professors is a great way for students to establish rapport and gain understanding in upcoming courses. It's also common practice to reach out to previous professors for letters of recommendation.

Get Ahead! [Taking a summer class](#) is a great way to make a lighter workload for the fall semester or earn an earlier graduation date. Students can help alleviate stress this fall by registering for courses and planning their schedule now. Students still have time to register for [Summer Sessions](#).

Take on a service project. Bluejays have plenty of opportunities to volunteer, do service and give back to the community, even during the summer. There is never a shortage of volunteer opportunities, and [Creighton can help find them](#).

Have some fun. Whether it's keeping up with a beloved hobby or trying a new activity, being active is a great way for students to decompress over the summer. When they return in the fall, Bluejays have ample opportunities to get involved with [clubs and organizations](#).

Take it easy. Recharging and relaxing are crucial after an action-packed academic year. Prioritizing rest and hydration now can set students up for [healthy habits](#) come fall semester. Creighton's [recreation, wellness and counseling services](#) are available over the summer.

5 Things You Need to Know

1. De-Stress Around Finals

Creighton offers fun activities amidst the stress of finals: Bluejays can enjoy a [late-night breakfast](#), [have coffee with canines](#) and even partake in [The Finals Scream](#) to release some tension.

2. Commencement is Almost Here

Creighton's commencement ceremonies are held May 11 to 13. Information about ceremonies, receptions, parking, frequently asked questions and other resources are available on [Creighton's commencement website](#).

3. Summer Closings

Freshman and sophomore residence halls will close at noon on May 10. Students can sign up for a check out appointment at the end of the month. More information about summer residence halls including answers to frequently asked questions can be [found on Creighton.edu](#).

4. Furniture Donations

In partnership with The Furniture Project, which aims to restore dignity to refugee families in need of furniture, the Jays ReNest event will collect used furniture on Creighton's Omaha campus May 3 to 5 and May 8 to 9. [Volunteers are needed](#) at campus donation sites to help collect and sort donations.

5. Save the Date for Family Weekend

Mark your calendars! Creighton's [Family Weekend](#) will be held Sept. 15 to 17.



Have questions? Need help?

Call 402.280.1212 or visit creighton.edu/family

4. Bluejay Family Connections

Facebook- BluejayFamily1876

Instagram- BluejayFamily

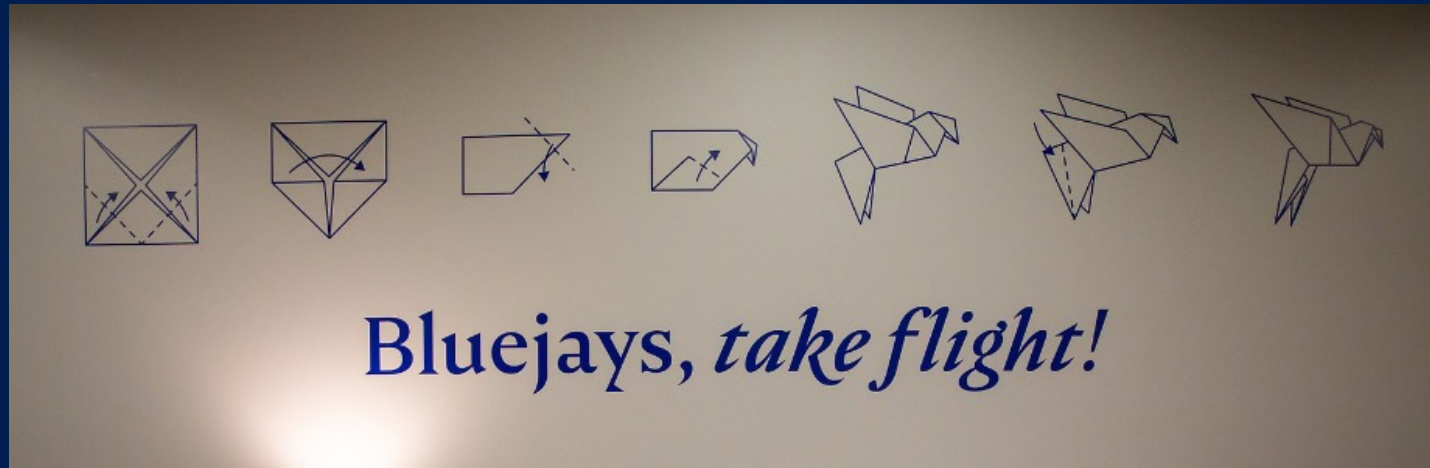
Twitter @BluejayFamily

Creighton.edu/family

****Coming Soon Bluejay Family Portal****



Remind your student...



****There are Success Hubs
in first-year residence halls
and our professional staff
are housed among your
students******

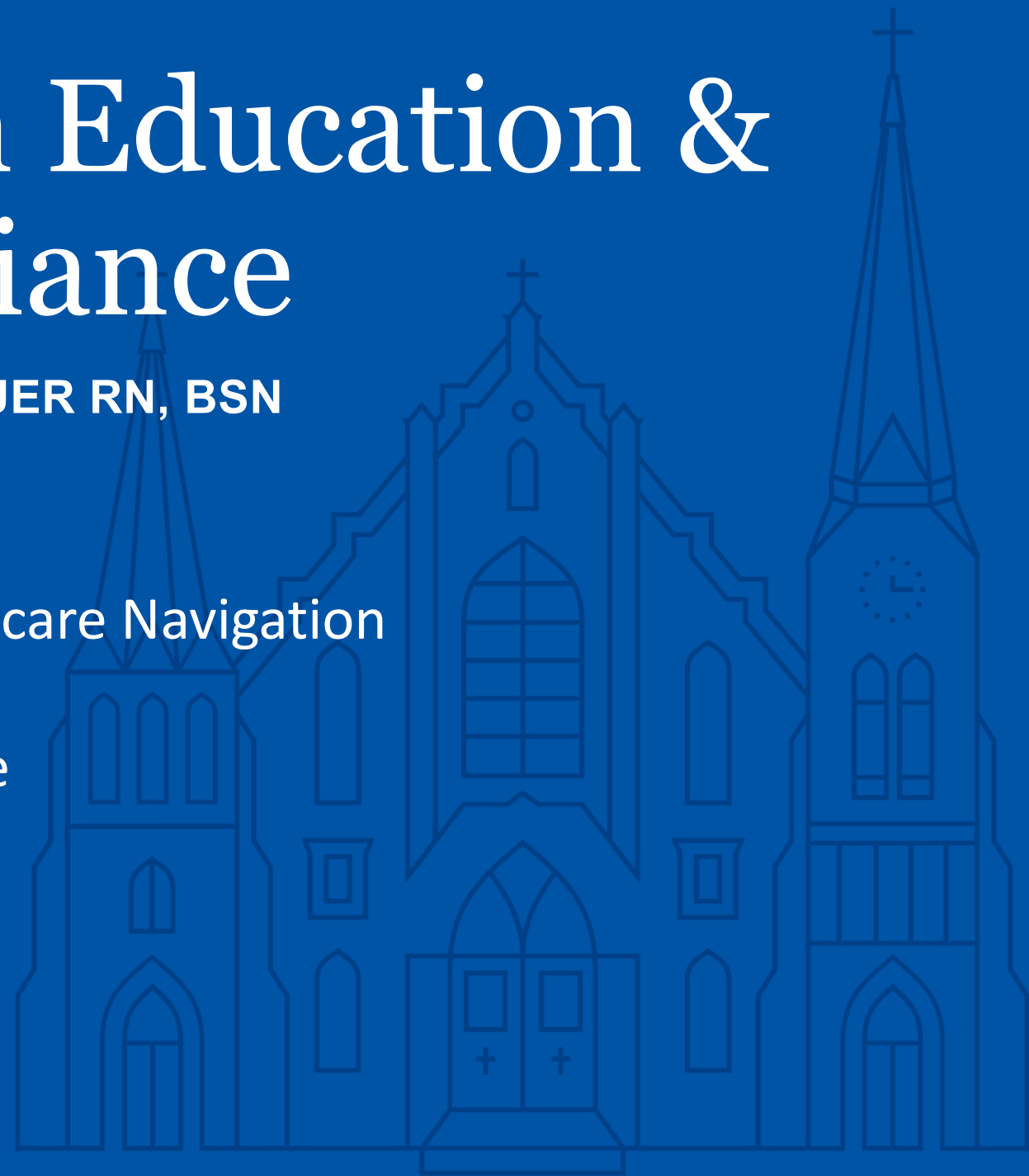
****Academic support is available
in the hubs (drop-in hours) and
in The Success Center as late as
9:00 pm. ****

Student Health Education & Compliance

MELISSA LINDAUER RN, BSN

Services provided:

- Care Coordination/Healthcare Navigation
- Student Health Insurance
- Immunization Compliance



Care Coordination/ Healthcare Navigation

- Provide guidance to students with chronic health issues and acute illness or injury
- Help students connect to:
 - Primary Care Providers
 - Specialty Providers
 - Physical Therapy Services
 - Home Health Care Providers
 - Pharmacy Providers

*The age of majority in Nebraska is 19. Students under the age of 19 will need parental consent for care or a healthcare power of attorney for a minor form.



CHI Health Clinic – Student Care Clinic

- Hours:
 - Monday-Thursday: 8am – 8pm
 - Friday: 8am - 5pm
- Priority Care Clinic (Urgent Care)
 - Everyday: 8am - 8pm



2412 Cuming Street
Omaha, NE 68131

Appointments: 402-280-2735
Option 2

University Campus Pharmacy

- Prescription medications
- Over the counter medications
- Call to transfer a prescription

Phone: 402-449-4560



After-Hours Medical Care

Campus Health Aide (CHA)

- Provide first aid/minor medical treatment to students on campus
- All care provided is under the direction of the on-call CHI Health Student Care Clinic Provider
- Availability:
 - Monday – Thursday: 4:30pm – 8:00am
 - Weekends – Friday: 4:30pm – Monday: 8:00am
- To request a CHA call Public Safety at 402-280-2104 or notify your RA



University Campus: Emergency Department

24/7 full-service

emergency department

Student Health Insurance

- Creighton University requires that all full-time students be covered by a comprehensive health insurance plan for the entire academic year (including summers).
- Enrollment in the University's student health insurance is automatic and occurs annually.
- Students that have coverage under a qualifying insurance policy are eligible to waive the university sponsored coverage.

Insurance Waiver Process

- The [United Healthcare Student Resources waiver site](#) will open for incoming freshmen 6/1/23.
- The deadline to submit an insurance waiver for the 2023-24 academic year is 9/6/23.
- If your waiver is denied or you do not submit a waiver by the deadline you will automatically be enrolled for annual coverage (8/1/23 – 7/31/24) and charged accordingly.

*An insurance waiver must be submitted annually

Immunization Compliance

- Immunizations are required for all students
 - College of Nursing and Paramedicine students will have additional requirements for clinical experiences
- The BirdHouse is Creighton's online portal for immunization compliance. This can be accessed through your NEST account
- Students can visit the CHI Health Student Care Clinic for any outstanding immunization requirements
- Shoo the Flu Clinics – free flu shots offered annually on campus each fall



Contact Information

Care Coordination/Healthcare Navigation

StudentHealth@creighton.edu

Student Health Insurance

StudentInsurance@creighton.edu

Immunization Compliance

Immunizations@creighton.edu

402-280-2735



Student Counseling Services

Confidential Services

- Free:
 - Individual counseling,
 - Crisis response day & night
 - Consultation
 - Referrals
 - TAO
- Cost associated
 - Psychiatry (insurance and self-pay)
 - ADHD/learning disability assessments (self-pay)
- Outreach events & @cocoathecounselor

Common Concerns

- Anxiety/worry/stress
- Low mood/sadness/depression
- Adjustment struggles
- Homesickness
- Relationship struggles/not fitting in
- Sleep disturbance
- Identity formation
- Substance use
- Trauma

Flexible Care Hybrid Model

- Brief, goal-focused, skill-based care with the flexibility to assist with most mental health concerns with limited capacity for long-term treatment or intermittent treatment
- Holistic approach to care
- Fast Access
- Utilize campus partnerships and resources
- Access to long-term community providers and specialists
- Case management and care coordination

After Hours / Crisis

- Crisis can mean lots of things
 - Suicidality with or without hospitalization
 - Panic attacks
 - High distress
- Same day crisis during business hours
- After Hours Crisis Counselor after hours, during closures, holidays and breaks
 - With next business day follow up

How to Reach Student Counseling

402-280-CALM



@cocoathecounselor



Our website:



Scenario:

Student or family member connects with one of our offices.

1. We listen, take notes and ask questions.
2. Is this mental health related? Health related? Social issues? Safety concerns? Concerns about major?
3. Identify a timeline
 - what needs done today? How long do we have to solve this problem?
4. Who needs to be involved?
 - Offices, academic partners, parents, coaches, outside care providers.
5. What hurdle or obstacle are we trying to overcome?
6. Identify next steps and clear communication pathways!



Save the Date!

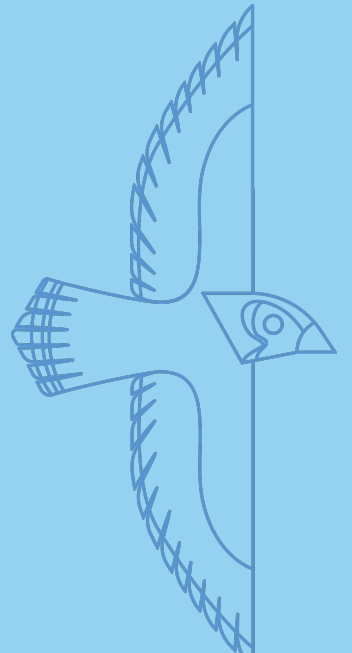
- Save the Date: Family Weekend Sept. 15-17.



Want to know more?

You can find us at the tabling event tomorrow!

Office of Student & Family Support
Don't know what to do? Call 1212!!
(402-280-1212)
Email: family@creighton.edu



An aerial photograph of Creighton University during the 'golden hour' of sunset. The sun is a large, bright orb in the upper center, casting a warm glow over the scene. In the foreground, a large, ornate stone clock tower with multiple crosses on its roof dominates the right side. To the left of the tower, a wide, paved walkway leads through a lush green lawn dotted with trees. In the background, various university buildings and a parking lot are visible under the soft light. A small rainbow is visible in the air near the base of the clock tower.

Creighton

UNIVERSITY

Contact us at NewJays@creighton.edu / 402.280.1715



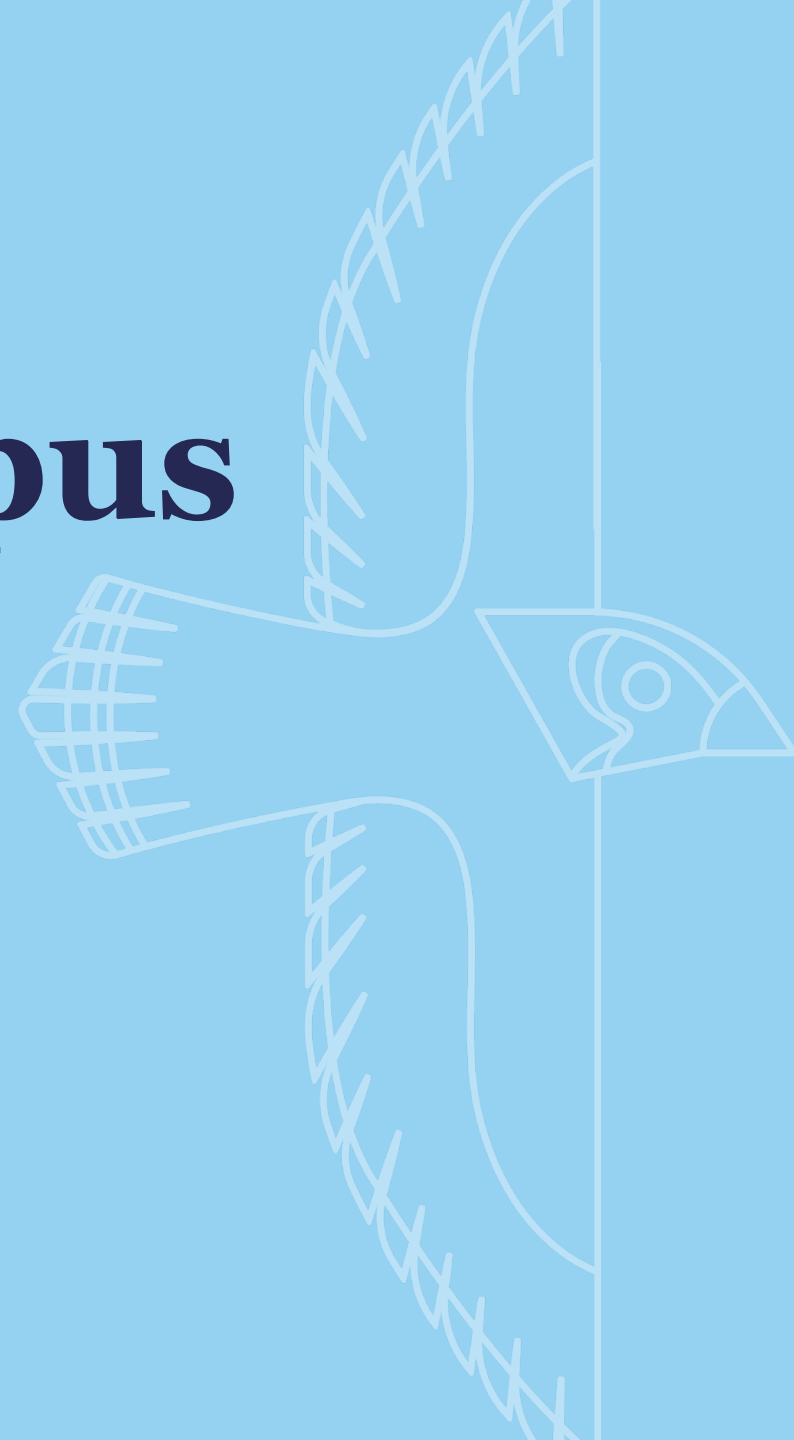
WELCOME

NEW
JAYS

CLASS
of 2027

NEW STUDENT ORIENTATION

Commuting to Campus Harper 2046



**CREIGHTON
NEW STUDENT
ORIENTATION**

Living at Creighton

YOUR HOME AWAY FROM HOME

Creighton
UNIVERSITY

Top 10 List

What to Know about Living on Campus



1. Hall Essentials

YOUR NEW HOME AMENITIES





Your New Home

- Community Lounges
- Study Areas
- Gaming Areas
- Prayer Spaces
- Community Kitchens
- Laundry Rooms
- Printing Services
- Mail Services

2. Success Hubs

IN HALL RESOURCE FOR YOUR SUCCESS



An Extension of the Success Center

Staffing

- Academic Success Coach
- Graduate Assistant
- Peer Mentors

Services

- Academic Coaching
- Mentoring
- Workshops
- Study Space

3. Room Essentials

CREIGHTON HOUSING HAS YOU COVERED



What Creighton Provides

- Twin XL Mattress + Bed Frame
- Lofting Materials + Ladder
- Bed Rails (Upon Request)
- Three-Drawer Dresser
- Desk + Chair
- Sink with Storage Cabinet
- Mini Fridge + Microwave
- Wastebasket + Recycle Bin



What You Provide – The Atmosphere!



4. What to Bring + Leave Behind

TRUST US HERE



WHAT TO PACK

Make sure to discuss your packing list with your roommate ahead of time!

Room Essentials

- Twin XL Bedding
- Pillows + Pillow Cases
- Throw Blanket(s)
- Washcloths + Towels
- Full Length Mirror
- Area Rug
- Desk/Floor Lamp
- Storage Bins
- Portable Fan
- Curtains (tension rods only)
- Room Decorations
- Removable Plastic Hooks/Strips

Kitchen Essentials

- Plates + Bowls
- Cups + Mugs
- Silverware
- Cookware + Utensils*
- Food Storage Containers
- Travel Mug or Reusable Water Bottle
- Reusable Grocery Totes

Personal Care + Supplies

- Toiletries/Hygiene Items
- Shower Caddy
- Shower Shoes
- First Aid Kit
- Thermometer
- Prescriptions + Refills
- Insurance Cards
- Clothing Hangers + Clothes
- Laundry Detergent
- Laundry Basket
- Cleaning Supplies*
- Hiring Process Documents**

Electronics

- Computer + Accessories
- Grounded 3-Prong Power Strip
- Surge Protector/Extension Cords
- TV + Coaxial Cord
- Headphones

WHAT NOT TO PACK

Leave At Home

- ✗ Alcohol/Drugs/Tobacco
- ✗ Weapons/Ammunition
- ✗ Candles, Incense, Melted Wax Products
- ✗ Open Heating Elements (Toaster, Hot Plate, Air Fryer, etc.)
- ✗ Space Heater/AC Units
- ✗ Bed Frame/Risers or Lofting Materials
- ✗ Nails/Drills
- ✗ Pets (Except for Approved and Registered Service or Assistance Animals)



FULL LIST
CAN BE
FOUND
HERE

5. Safety + Security

YOUR HOME, YOUR COMMUNITY, YOUR SAFETY



Policies to keep you safe

- Fire Hazards
- Pets
- Substance Free Halls
- Property Damage

Front Desk & Guest Expectations

- Swiping your ID Card
- Guest Visitation Policy
- Front Desk Services

6. Staffing

FRIENDLY FACES IN YOUR COMMUNITY



A City of People

- Resident Director (RD)
- Resident Advisor (RA)
- Assistant Resident Director (ARD)
- Desk Receptionists (DRs)
- Hall Chaplain
- Campus Health Aides
- Housing Staff
- Facilities Management



7. Roommate Conflict

NO NEED FOR BAD BLOOD



Conflict – A Natural Part of Life

- Get to know your roommate
- The Roommate Agreement
- Life is not a sitcom
- Communication & Mediation
- Safety vs Feeling Uncomfortable



8. Meals

A VITAL PART OF YOUR DAY





Meal Plan Options

All Access
+ 150 Dining Dollars

14 Meals Per Week
+ 600 Dining Dollars

10 Meals Per Week
+ 1,000 Dining Dollars

Campus Dining Options

Brandeis/Harper Dining Halls

- Simple Servings
- Mindful Station
- Chef's Table/Comfort
- Expo Line
- Grill Station
- Pasta + Pizza
- Salads/Sandwiches
- Desserts

@CreightonDining
@CreightonDietician
DanielleMoran@creighton.edu

Retail Locations

- McGloin Market
- Wareham Court
- Jack + Eds



9. Have Fun – Get Involved

THERE'S A WHOLE WIDE WORLD WAITING FOR YOU!

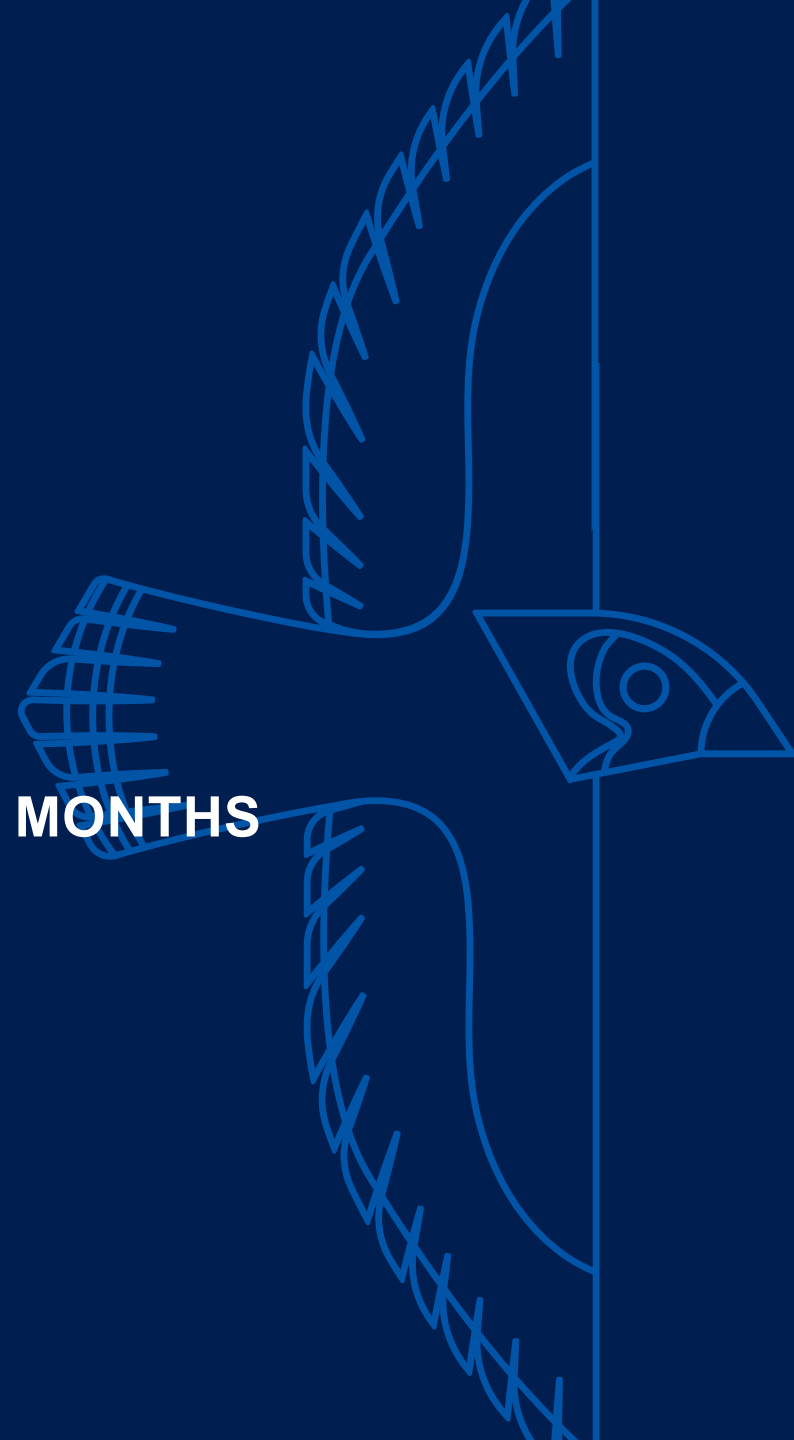


Activities & Leadership

- Floor Programs
- Hall Wide Programs
- Residence Hall Council
 - Advocate for your community
 - Write legislation
 - Plan Hall Events

10. Timeline

YOUR CREIGHTON PLAN FOR THE NEXT 3 MONTHS



What Next?

After 4th of July – Housing Assignments Released

Move In Information Sent

Throughout July – Reminder Move In Emails

Monday, July 24 – Can start shipping large mailing items

Friday, August 11 – Freshman MOVE IN

Saturday, August 12 – Freshman MOVE IN

Tuesday, August 15 – First Day of Classes

Tuesday, August 22 – Last Day to Change Meal Plan

**HELPFUL HINT- MAKE SURE YOU'VE
BOOKMARKED THESE PAGES:**

Creighton Email
Housing Portal



An aerial photograph of Creighton University during the "golden hour" of sunset. The sun is a large, bright orb in the upper center, casting a warm glow over the scene. In the foreground on the right, a large, ornate stone clock tower with multiple crosses on its roof dominates the frame. To the left of the tower, a wide, paved pedestrian walkway winds through a lush green campus. In the background, various university buildings and more trees are visible under the soft light of the setting sun. A small rainbow is visible in the air near the base of the clock tower.

Creighton

UNIVERSITY

Contact us at living@creighton.edu / 402.280.2717



WELCOME

NEW
JAYS

CLASS
of 2027

NEW STUDENT ORIENTATION



Our Jesuit Identity

ATTENDING A JESUIT UNIVERSITY

PRESENTED BY ROBBY FRANCIS, DIRECTOR OF CAMPUS MINISTRY

**CREIGHTON
NEW STUDENT
ORIENTATION**

Creighton
UNIVERSITY

Jesuit Ministries

- Education
- Parishes
- Retreat Centers
- Volunteer Opportunities
- Advocacy



Who was St. Ignatius of Loyola?

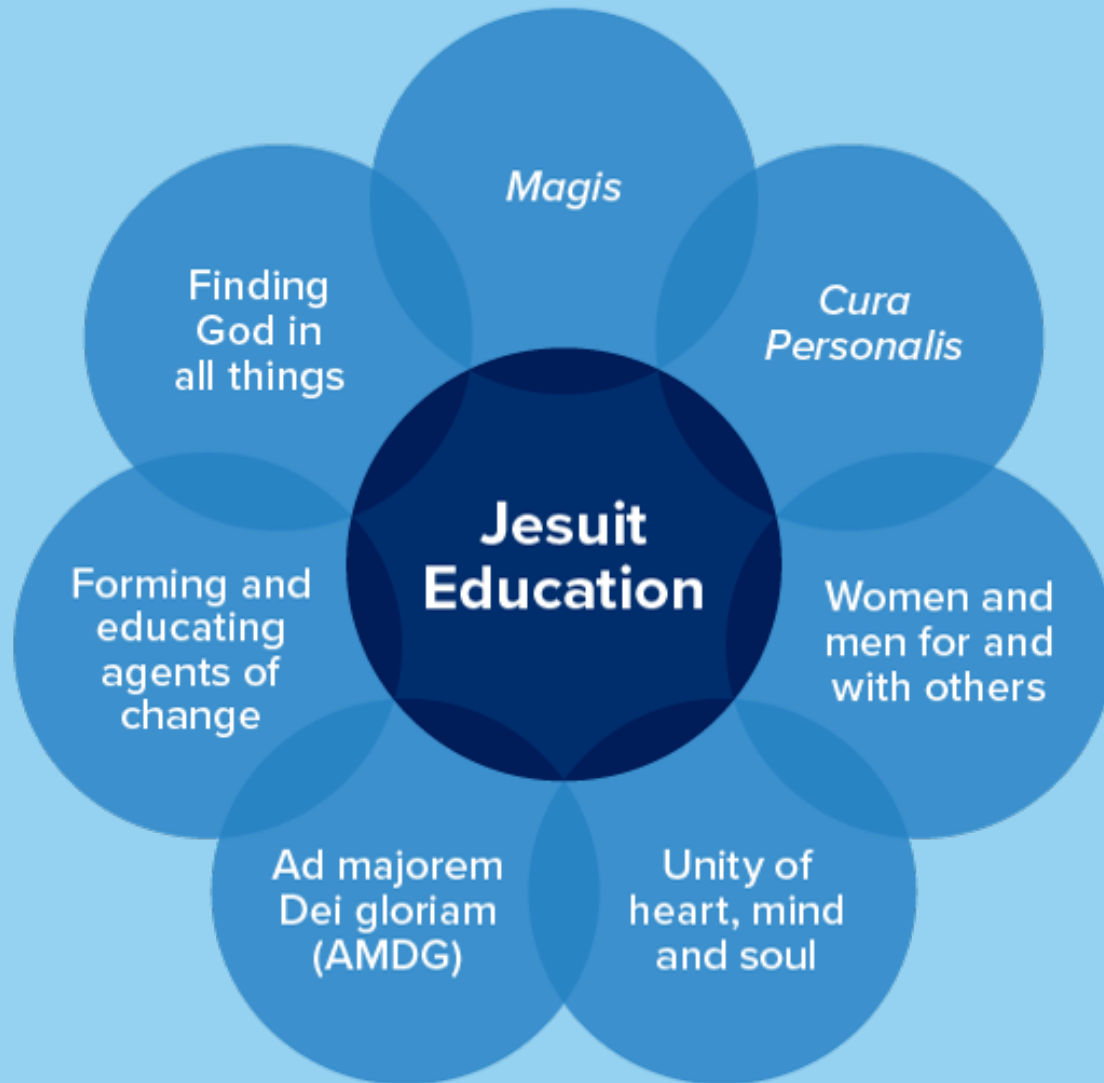




Jesuit Education

- EDUCATION WASN'T IN IGNATIUS' ORIGINAL PLANS FOR THE JESUITS
- THE JESUITS WERE THE FIRST TEACHING ORDER
- JESUIT EDUCATION IS ROOTED IN THE SPIRITUAL EXERCISES
- DEEPEN STUDENTS' UNDERSTANDING OF THEIR VOCATION AND BECOME AGENTS OF CHANGE IN THE WORLD





Jesuit Formation

- WHAT DOES "FORMATION" MEAN?
- HELPING YOU DISCOVER WHO YOU ARE CALLED TO BE IN THE WORLD.
- THE JESUIT VALUES PLAY A PART IN HELPING YOU UNDERSTAND HOW TO BE A WHOLE AND HAPPY PERSON.

Let's do an Examen

- What's been life giving today?
- What's been hard?



Formation Opportunities

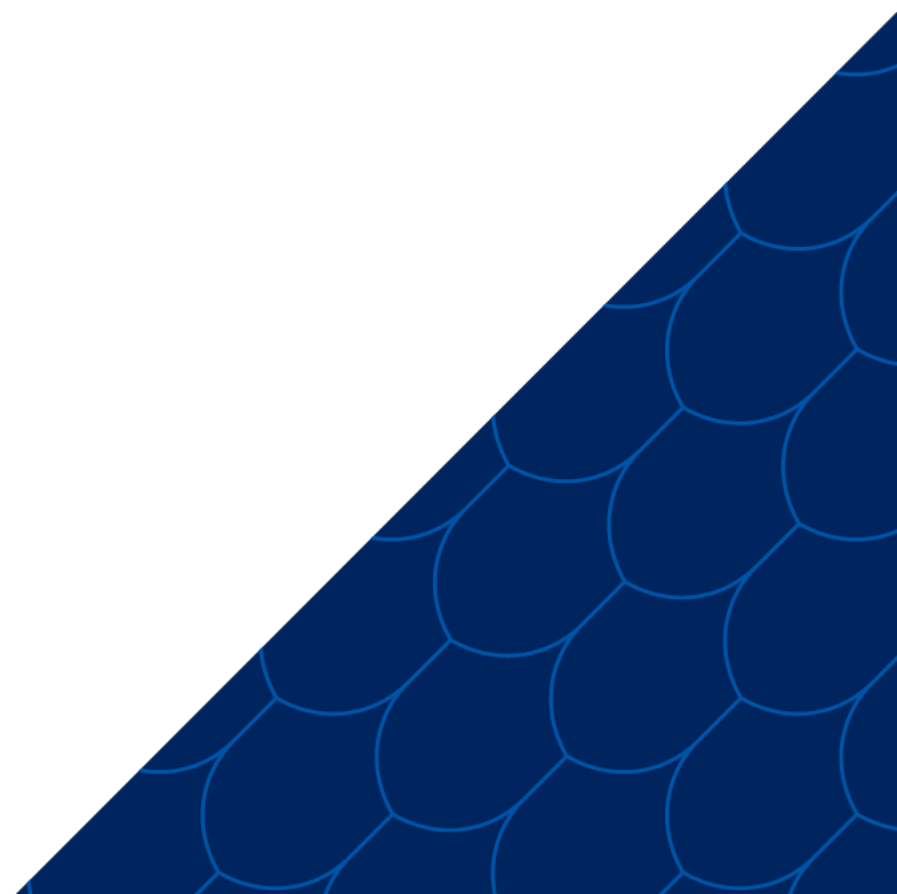
CAMPUS MINISTRY

Freshman Retreat: September 8-10, 2023

Come to Campus Ministry table!

SCSJ

Local Community Engagement: Ongoing





WELCOME

NEW
JAYS

CLASS
of 2027

NEW STUDENT ORIENTATION

Parent and Family Program

JUDY PRITZA BSN'92 MS'96

**CREIGHTON
NEW STUDENT
ORIENTATION**

Creighton
UNIVERSITY

How to Get Involved

- GOODWILL AMBASSADOR
- WELL INFORMED PARENT
- INTERNSHIP CONNECTION/CAREER OPPORTUNITIES
- PHILANTHROPY



Sendoff Events

MILWAUKEE
DALLAS
KANSAS CITY
DENVER
DES MOINES
SAN DIEGO
CHICAGO
ST LOUIS

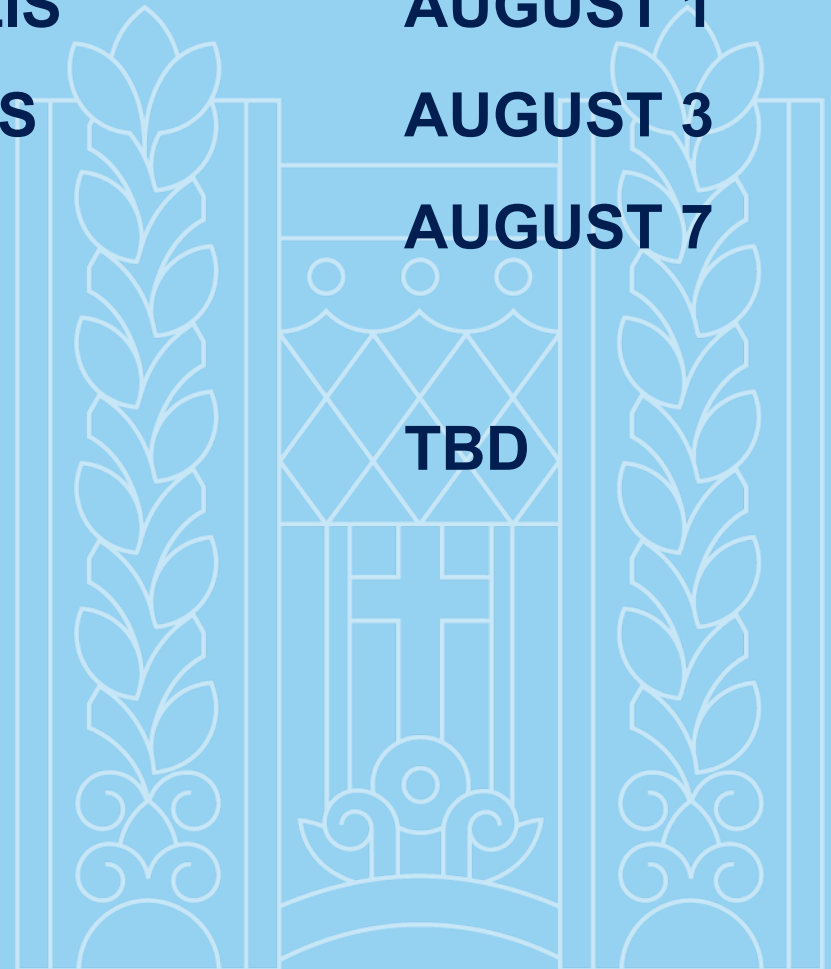
JULY 19
JULY 23
JULY 25
JULY 26
JULY 27
JULY 30
JULY 30
JULY 31

MINNEAPOLIS
SIOUX FALLS
OMAHA

PHOENIX

AUGUST 1
AUGUST 3
AUGUST 7

TBD





WELCOME

NEW
JAYS

CLASS
of 2027

NEW STUDENT ORIENTATION



WELCOME

NEW
JAYS

CLASS
of 2027

NEW STUDENT ORIENTATION

**CREIGHTON
NEW STUDENT
ORIENTATION**

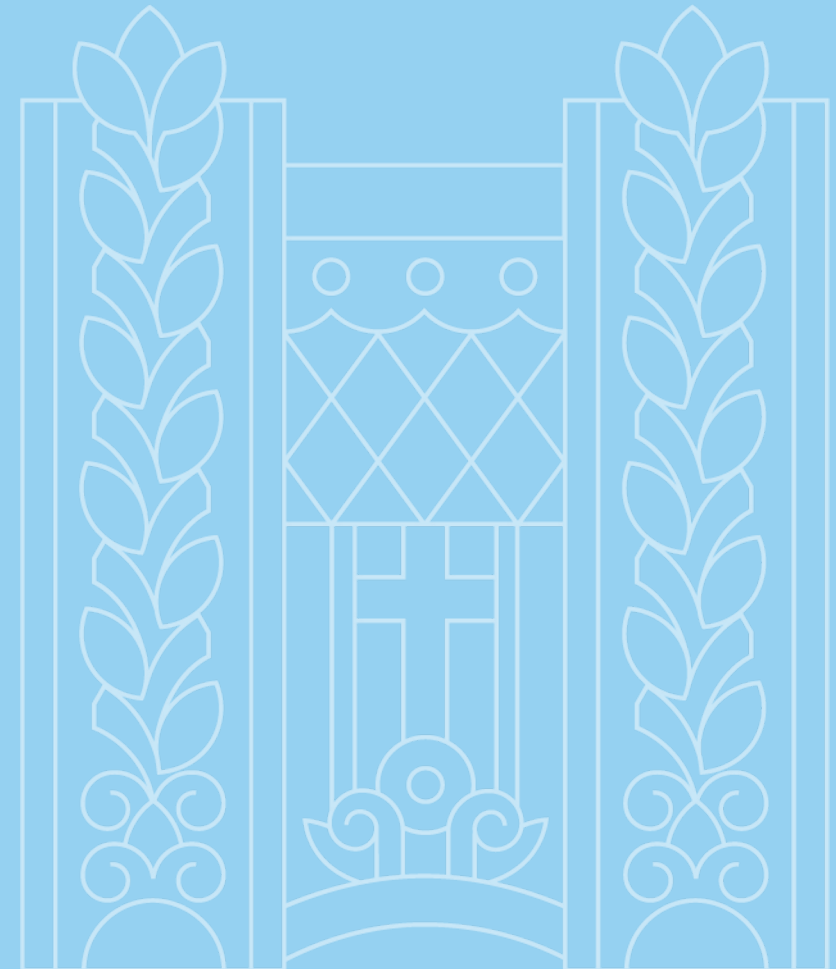
Community Expectations

Creighton
UNIVERSITY

Who are we?

ALLISON TAYLOR, EXECUTIVE DIRECTOR
TITLE IX AND CIVIL RIGHTS COMPLIANCE

DESIREE NOWNES, SENIOR DIRECTOR
COMMUNITY STANDARDS AND STUDENT CONDUCT



Integrity

Act with professional, academic, and personal integrity:

This principle challenges you to shape a personal code of *positive* values, live a healthy, balanced lifestyle, and discover and embrace the responsibilities of your freedom, intelligence, and intrinsic worth.



Integrity

Inconsistent with this value:

Off-Campus Behavior

Failure to Comply

Fake ID

Fleeing Student

False Information



Dignity

Respect and promote the dignity of all persons

This principle challenges you to refrain from actions that threaten or discourage the freedom, personal safety, and respect that all persons deserve.



Dignity

Inconsistent with this value:

Harassment/Bullying

Hazing

Alcohol/Drugs

Harm to others

Off-campus

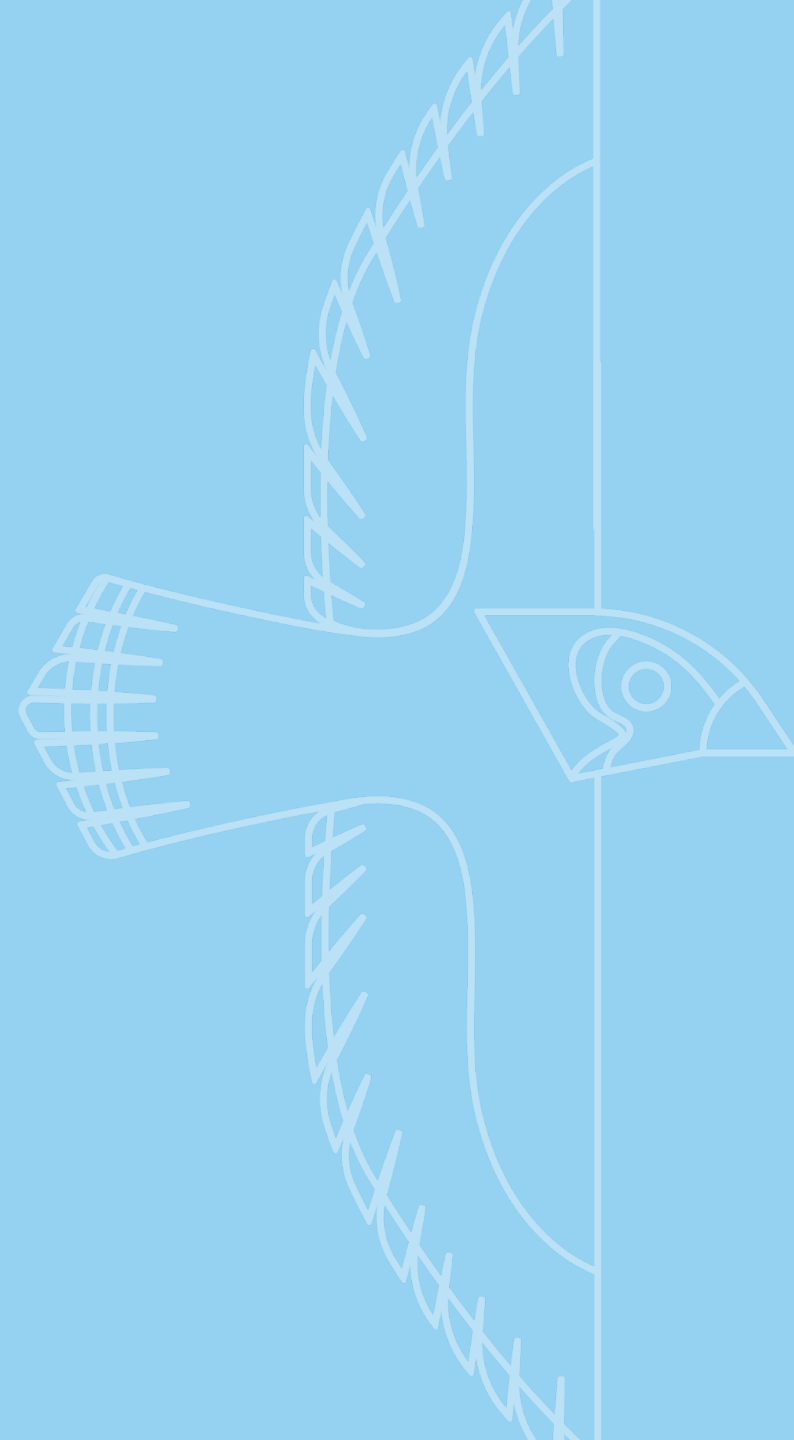
Title IX and Civil Rights

Compliance:

Sexual Harassment/Assault

Dating Violence

Discrimination



Community

Respect the policies of Creighton University, and its members, both on and off campus, as well as the laws of the civic community, and the rights of its members

This principle challenges you to realize you are part of a member of a larger community, with a responsibility to understand diverse societal issues, and being a responsible participant of the civic, and Creighton, community.



Community

Inconsistent with this value:

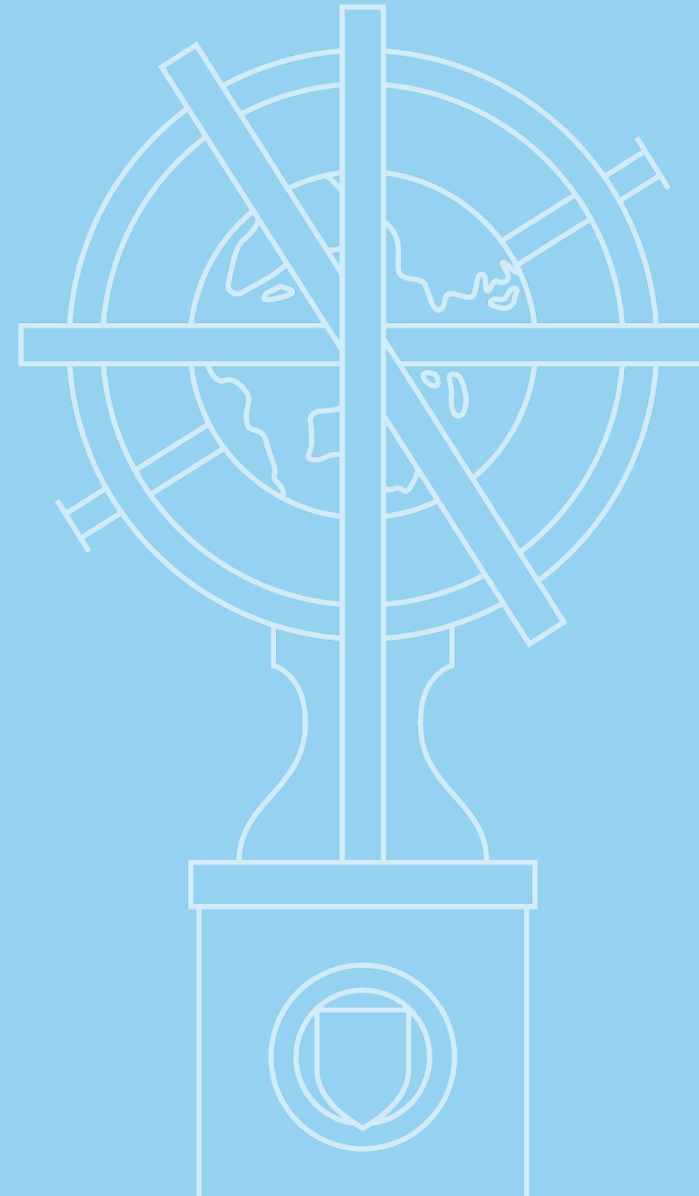
Unlawful Use/Possession of
Alcohol/Drugs

THC – Wax/Oil (Felony)

Violations of the law

Theft

Procurement of Alcohol/Drugs



Development

Support the personal, professional, academic, and vocational development of the members of the Creighton University Community

This principle challenges you to practice compassion and consider the needs and the wellbeing of others.

Additionally, to encourage the development of students' moral, spiritual, intellectual, emotional, personal, and vocational abilities.



Development

Inconsistent with this value:

Allowing violations to occur

Presence of alcohol/drugs

Vandalism

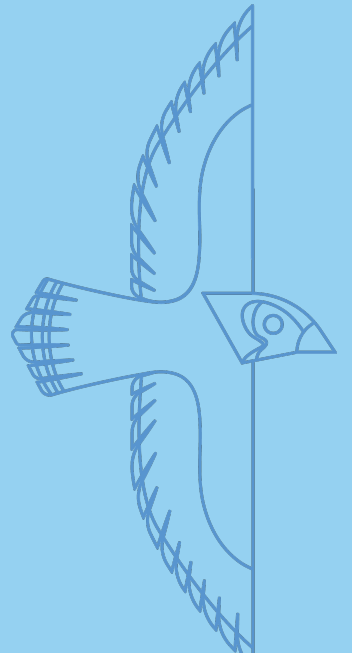
Noise

Off-campus events

- Athletic events

- Student organizations

- Omaha community



Who do you
want to be?



Choices and Outcomes

Decision-making

Positive choices

Obstacles

Holistic Development

Growth

Responsibility

Resources



Examples of Decision Making

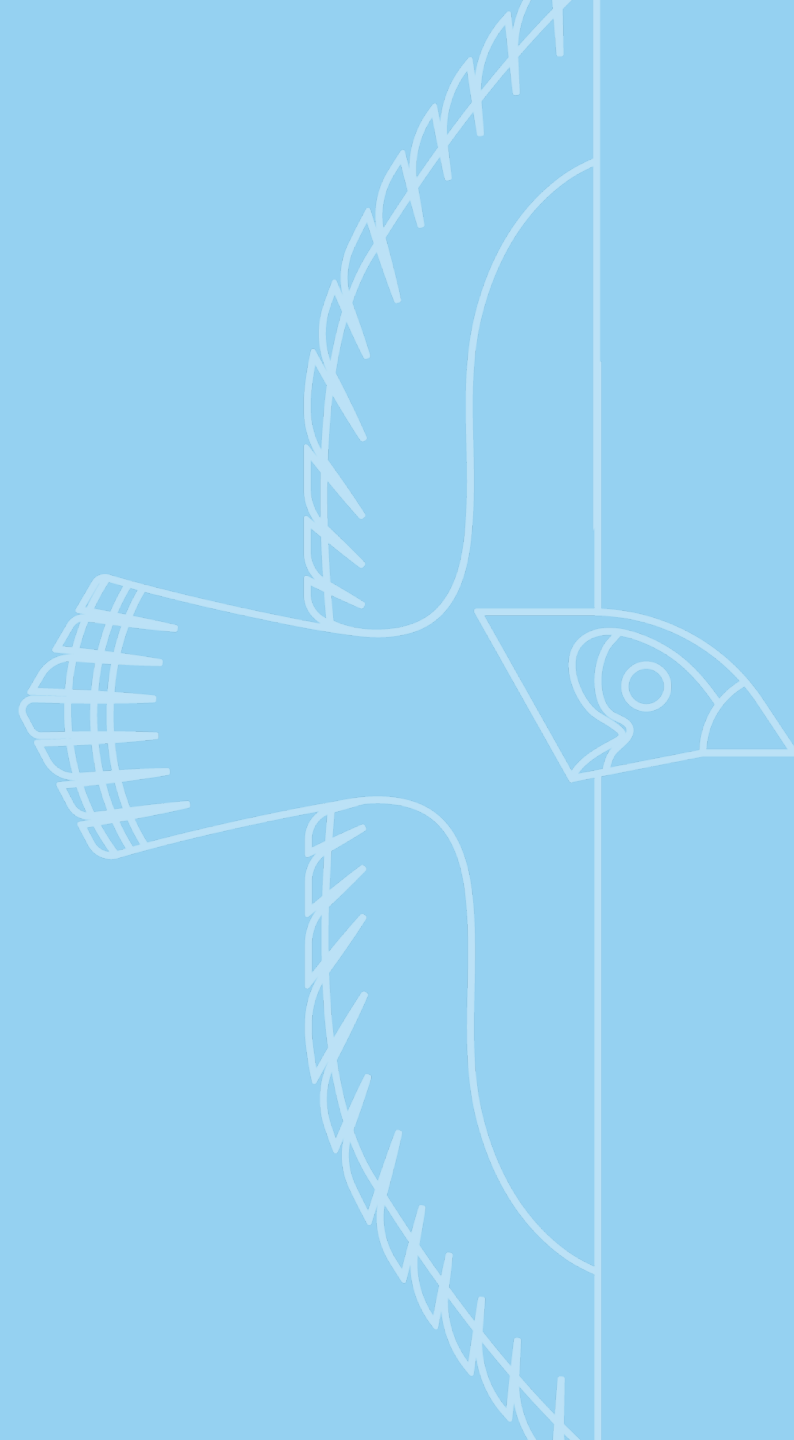
Information for Parents

Communication matters

Keep student issues in perspective

Support vs Manage

F.E.R.P.A.



Contact Information

Allison Taylor – allisontaylor@creighton.edu

Title IX and Civil Rights Compliance

Desiree Nownes – desireenownes@creighton.edu

Student Formation

New Student Orientation

Community Standards and Student Conduct



An aerial photograph of the Creighton University campus during the "golden hour" of sunset. The sun is a large, bright orb in the upper center, casting a warm glow over the scene. In the foreground on the right, a large, ornate stone clock tower with multiple crosses on its roof dominates the view. To the left of the tower, a wide, paved walkway leads through a lush green lawn dotted with trees. In the background, various university buildings and a city skyline are visible under the soft light of the setting sun. A small rainbow is visible in the air near the base of the clock tower.

Creighton

UNIVERSITY

Contact us at NewJays@creighton.edu / 402.280.1715

**CREIGHTON
NEW STUDENT
ORIENTATION**

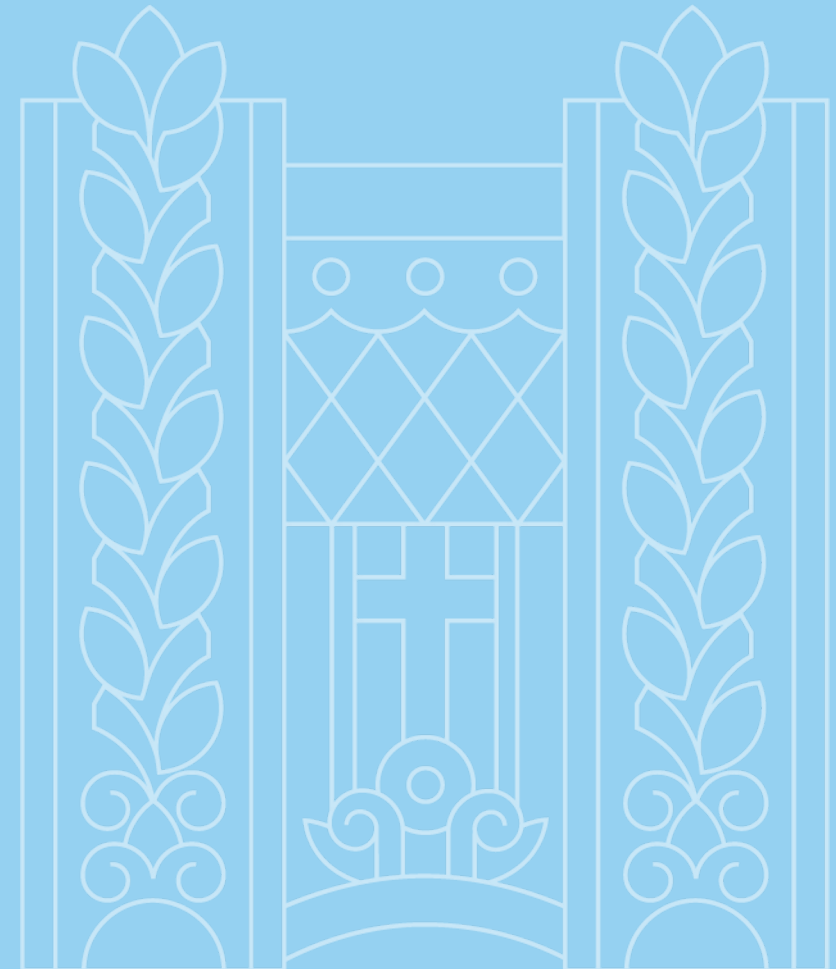
Community Expectations

Creighton
UNIVERSITY

Who are we?

ALLISON TAYLOR, EXECUTIVE DIRECTOR
TITLE IX AND CIVIL RIGHTS COMPLIANCE

DESIREE NOWNES, SENIOR DIRECTOR
COMMUNITY STANDARDS AND STUDENT CONDUCT



Integrity

Act with professional, academic, and personal integrity:

This principle challenges you to shape a personal code of *positive* values, live a healthy, balanced lifestyle, and discover and embrace the responsibilities of your freedom, intelligence, and intrinsic worth.



Integrity

Inconsistent with this value:

Off-Campus Behavior

Failure to Comply

Fake ID

Fleeing Student

False Information



Dignity

Respect and promote the dignity of all persons

This principle challenges you to refrain from actions that threaten or discourage the freedom, personal safety, and respect that all persons deserve.



Dignity

Inconsistent with this value:

Harassment/Bullying

Hazing

Alcohol/Drugs

Harm to others

Off-campus

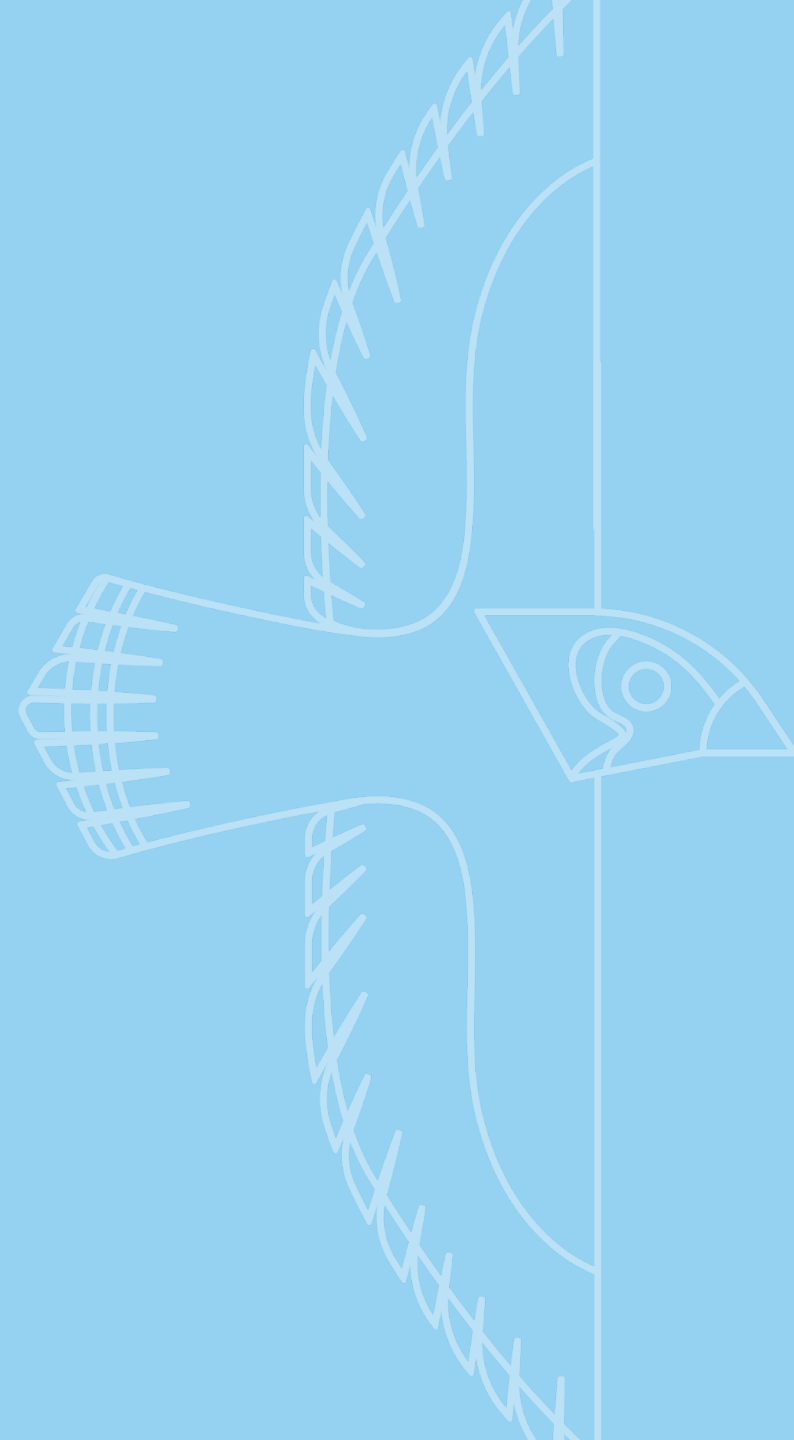
Title IX and Civil Rights

Compliance:

Sexual Harassment/Assault

Dating Violence

Discrimination



Community

Respect the policies of Creighton University, and its members, both on and off campus, as well as the laws of the civic community, and the rights of its members

This principle challenges you to realize you are part of a member of a larger community, with a responsibility to understand diverse societal issues, and being a responsible participant of the civic, and Creighton, community.



Community

Inconsistent with this value:

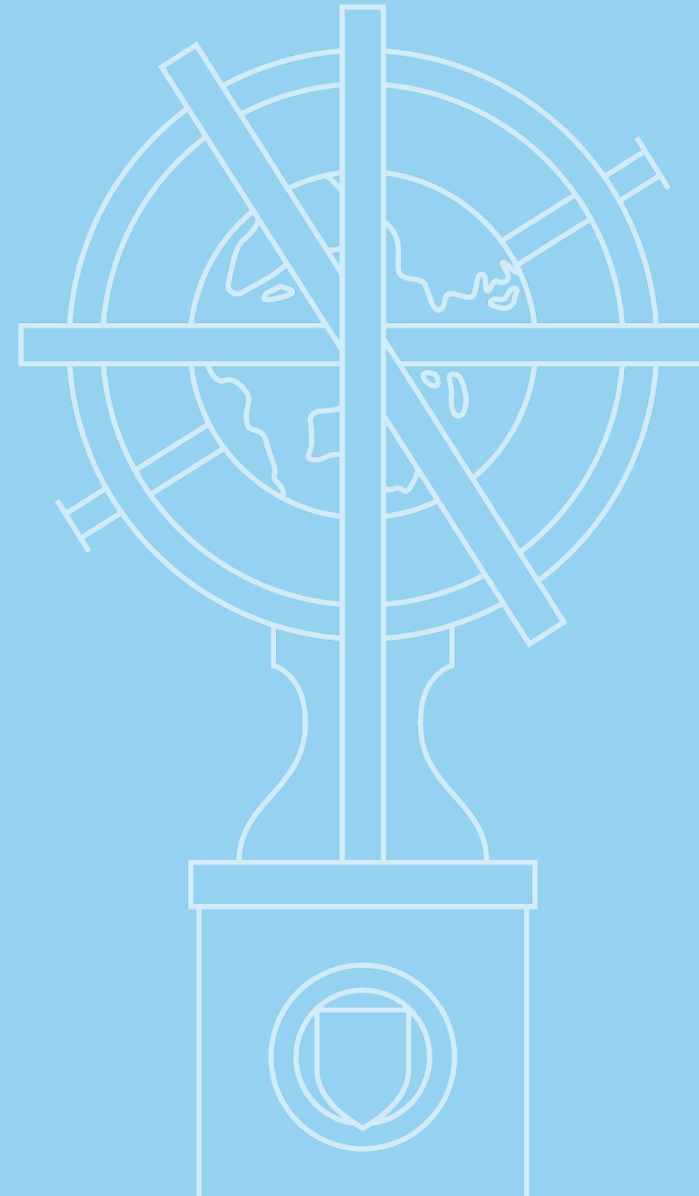
Unlawful Use/Possession of
Alcohol/Drugs

THC – Wax/Oil (Felony)

Violations of the law

Theft

Procurement of Alcohol/Drugs



Development

Support the personal, professional, academic, and vocational development of the members of the Creighton University Community

This principle challenges you to practice compassion and consider the needs and the wellbeing of others.

Additionally, to encourage the development of students' moral, spiritual, intellectual, emotional, personal, and vocational abilities.



Development

Inconsistent with this value:

Allowing violations to occur

Presence of alcohol/drugs

Vandalism

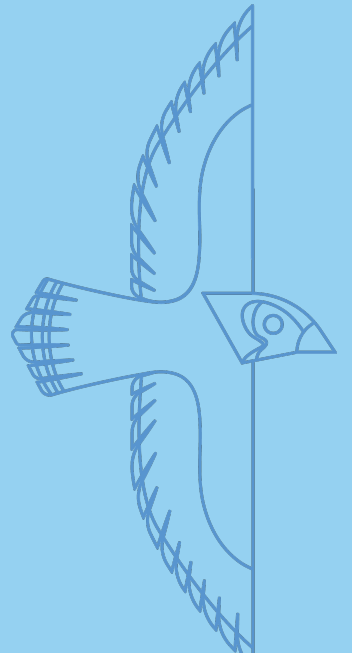
Noise

Off-campus events

- Athletic events

- Student organizations

- Omaha community



Who do you
want to be?



Choices and Outcomes

Decision-making
Positive choices
Obstacles

Holistic Development
Growth
Responsibility

Resources



Examples of Decision Making

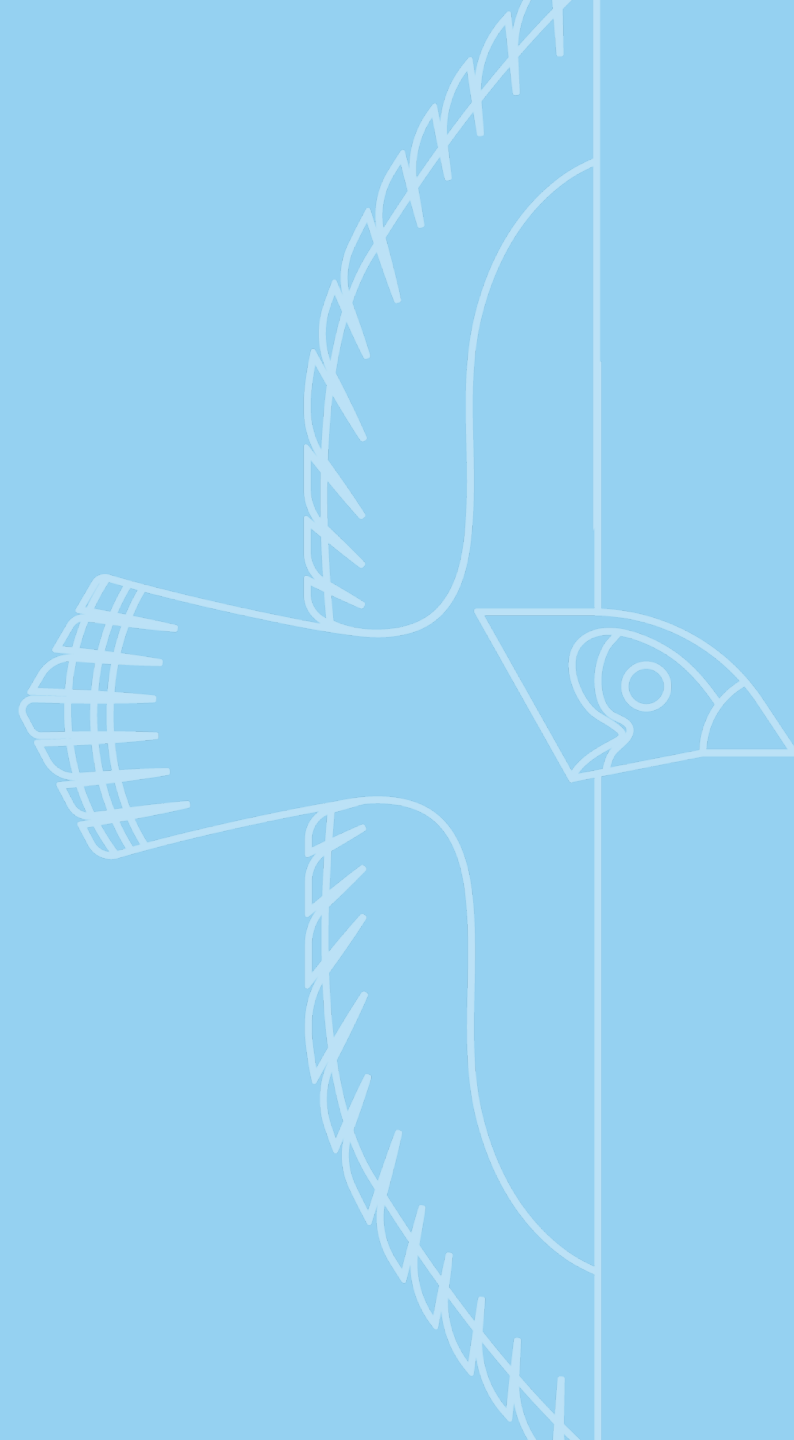
Information for Parents

Communication matters

Keep student issues in perspective

Support vs Manage

F.E.R.P.A.



Contact Information

Allison Taylor – allisontaylor@creighton.edu

Title IX and Civil Rights Compliance

Desiree Nownes – desireenownes@creighton.edu

Student Formation

New Student Orientation

Community Standards and Student Conduct



An aerial photograph of Creighton University during the 'golden hour' of sunset. The sun is a large, bright orb in the upper center, casting a warm glow over the scene. In the foreground, a large, ornate stone clock tower with multiple crosses on its roof dominates the right side. To the left, a wide, paved walkway leads through a lush green lawn dotted with trees. In the background, various university buildings and a city skyline are visible under the soft light of the setting sun. A small rainbow is visible in the air near the base of the clock tower.

Creighton

UNIVERSITY

Contact us at NewJays@creighton.edu / 402.280.1715



WELCOME

NEW
JAYS

CLASS
of 2027

NEW STUDENT ORIENTATION

**CREIGHTON
NEW STUDENT
ORIENTATION**

Creighton
UNIVERSITY

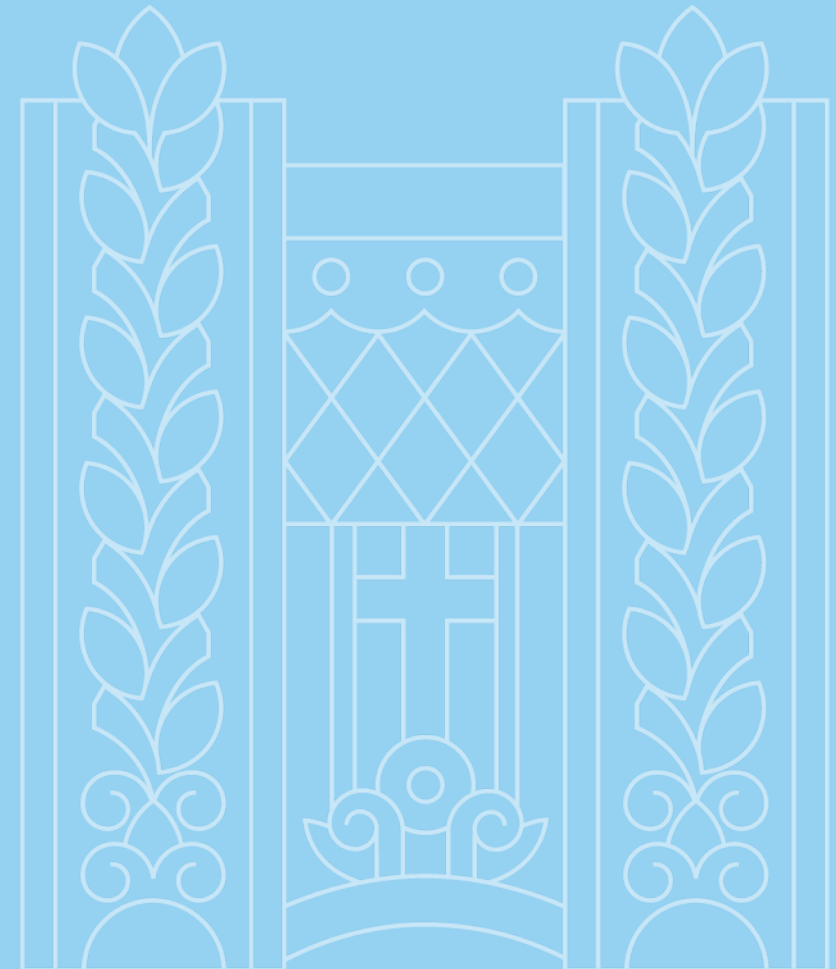
Finding your Selfie

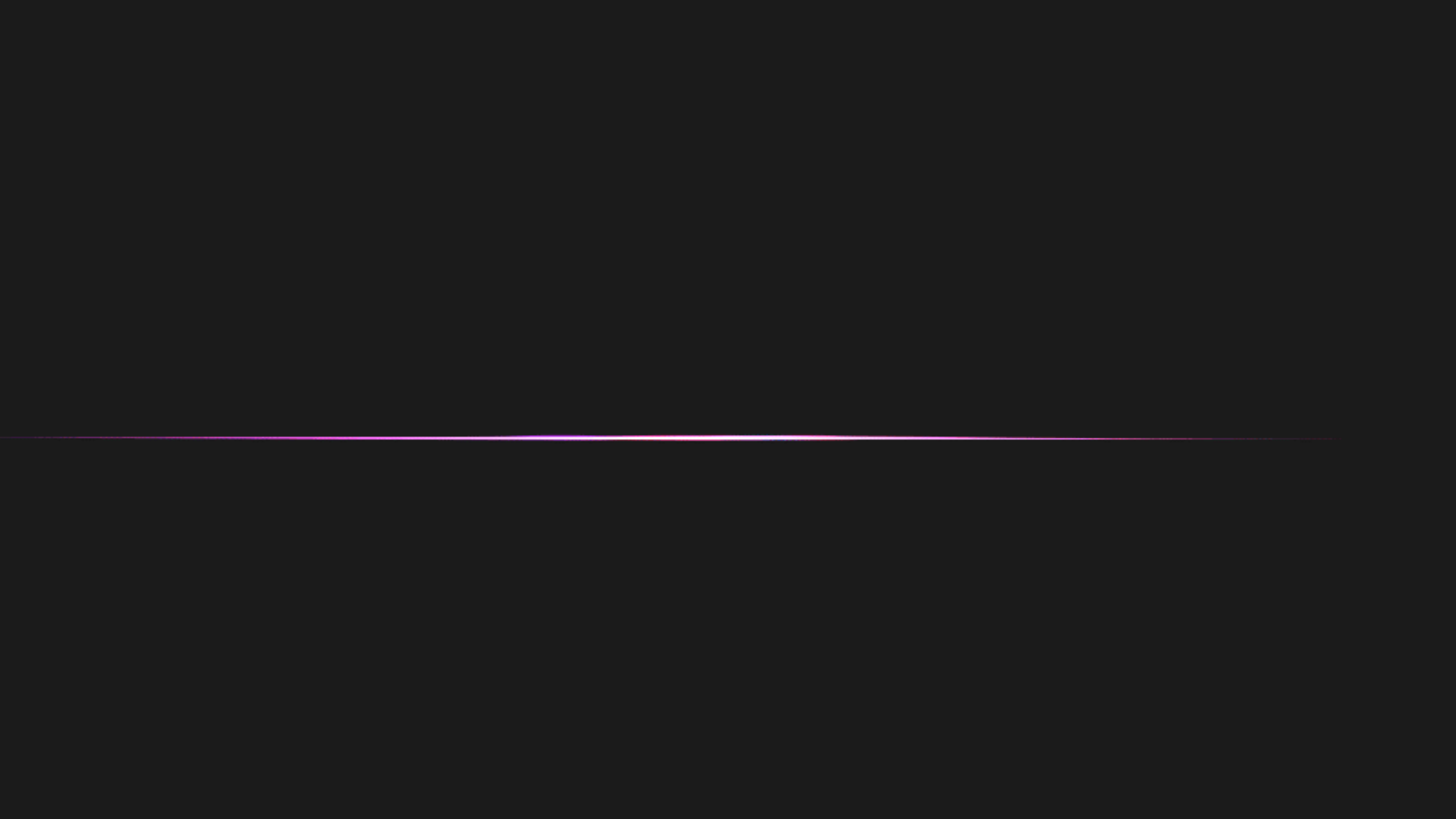
STACY RAFFERTY

**CREIGHTON INTERCULTURAL CENTER
DIVISION OF EQUITY, DIVERSITY, AND
INCLUSION**

Why are you going to college?

- **TO LEARN**
- **TO GROW**
- **TO MAKE NEW FRIENDS**
- **TO PREPARE FOR A GOOD JOB**
- **TO “FIND” YOURSELF**





Get out of your comfort zone

*“Open your eyes to the beauty around you,
open your mind to the wonders of life...”*



We all play a role in creating an inclusive campus

Here are some ways to start:

- **Be open and practice active listening.**
Listen to learn. Open heart and open mind.
- **Attend educational and cultural programs.**
There are many diversity-related educational programs as well as cultural events available to students, staff and faculty at Creighton.
- **Visit the Creighton Intercultural Center**
for more conversation, learning and resources.

Engage



We're behind you all the way



You BELONG Here... Pass it on!

... open your heart to those who love you,



Don't forget to take a selfie

...and always be true to yourself."





Contact Us!

Creighton Intercultural Center

Brandeis B03

cicjays@creighton.edu

402-280-2459



WELCOME

NEW
JAYS

CLASS
of 2027

NEW STUDENT ORIENTATION

Summer Preview 2023

Student Engagement and Involvement

Katie Kelsey, Ed. D.

Five Components of Student Belonging

Students' sense of belonging on campus is one of the top factors in their retention and persistence. But belonging is hard to define and even harder to measure. Through a review of academic literature and conversations with university leaders, EAB has broken down student belonging into **five specific, defined components**—each with specific best practices that leaders can put in place. Students who have all five components are much more likely to feel they belong and to stay engaged with the university even after they graduate.

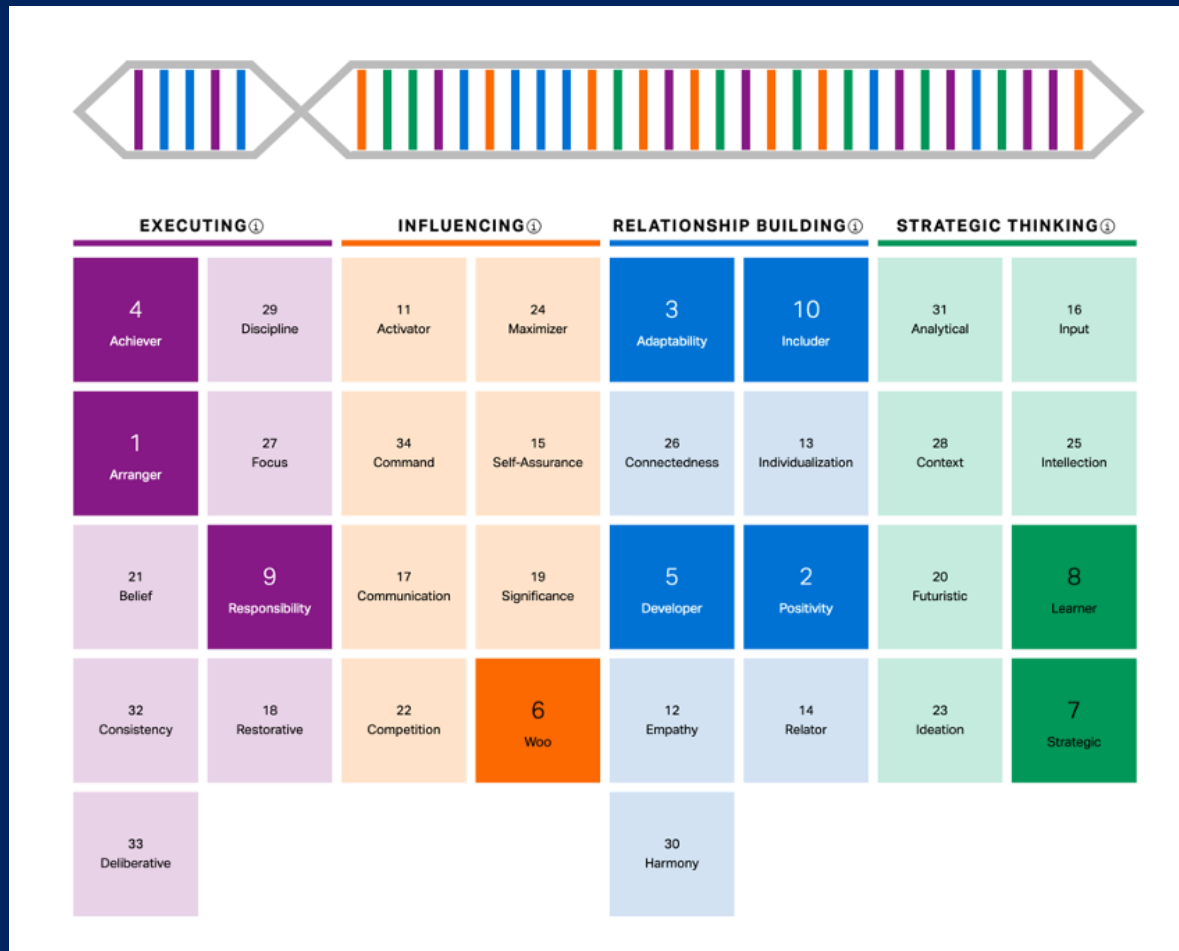


Visit the [Student Belonging Resource Center](https://eab.com/StudentBelongingResourceCenter)

eab.com/StudentBelongingResourceCenter

© 2021 by EAB. All Rights Reserved. 37928

Clifton Strengths for Students



Students will receive their code the week of June 19 and will have until July 26 to take the assessment



Clifton Strengths for Students

Class	First Year	Strength 1	Strength 2	Strength 3	Strength 4	Strength 5
Class 2020	2016-2017	Achiever	Restorative	Learner	Empathy	Harmony
Class 2021	2017-2018	Achiever	Restorative	Developer	Learner	Empathy
Class 2022	2018-2019	Achiever	Restorative	Harmony	Adaptability	Competition
Class 2023	2019-2020	Achiever	Restorative	Empathy	Harmony	Adaptability
Class 2024	2020-2021	Restorative	Achiever	Competition	Harmony	Input
Class 2025	2021-2022	Restorative	Achiever	Harmony	Competition	Includer

- Our current undergraduate student is driven, is a problem solver, doesn't like conflict, can easily sense other people's feelings, compares their own progress against their peers' progress.
- In the past two years, there has been a stronger sense wanting to know more information and a desire to not leave anyone out.

Move-In

- August 11-12
- Move-In Time Slots
- Label everything
- We move everything in for you!
- Stay through Sunday morning



Welcome Week 2023

- The Event
- Taste of Creighton
- First Floor Meeting
- Convocation and Keys to Success
- CU Survival



Glow Party/Lip Sync



Skutt Shutdown

- August 24 – over 130 clubs



Sports Clubs and Intramurals



Other Opportunities

- Retreats
- Athletic Events and Getting Blue BBQ
- Student Employment
- Fine Arts
- Cultural Events
- Late Nights Programming

Fraternity and Sorority Life

- Deferred Recruitment
- 8 Sororities, 6 Fraternities, 2 Culturally Based Organizations
- Focus on service, academics, and brotherhood/sisterhood
- Dance Marathon



Creighton Students Union (CSU)

- Comprehensive student government
- Many ways to get involved:
 - House of Delegates
 - Appropriations Committee
 - Program Board and Street Team
- Funding
- University Committees
- Taste of Creighton – meet resources on campus

CSU Program Board

- Small and Large Scale Events
 - Homecoming – Sept 9-17
 - Jaywalk – Sept 16
 - Fallapalooza – Nov
 - Late Night Programs
 - Comedians, speakers and musicians
 - Off campus excursions



Student News

- Twice a week – all students
 - Mondays and Thursdays
- Highlights events and important information



Important Fall Dates

- August 11-12: Move-In
- August 13: Welcome Week beings
- August 18: Glow Party
- August 19: Lip Sync
- August 24: Skutt Shutdown
- September 9 -17: Homecoming
- September 15-17: Family Weekend



WELCOME

NEW
JAYS

CLASS
of 2027

NEW STUDENT ORIENTATION

Text your questions to
(402) 577-0366





WELCOME

NEW
JAYS

CLASS
of 2027

NEW STUDENT ORIENTATION

“
**TRUE BELONGING
IS NOT PASSIVE.**

**It's a practice that requires
us to be vulnerable, get
uncomfortable, and learn how to
be present with people without
sacrificing who we are.**

BRENÉ BROWN