

# By the Numbers



## Training the next generation of physicians

imbued with the Jesuit-inspired ethos of service, leadership and community. Our residents become outstanding physicians and agents of change in the communities they serve.



**340+**  
residents  
and fellows

### 9 residency programs

Anesthesiology, Emergency Medicine, Family Medicine, General Surgery, Internal Medicine, Obstetrics and Gynecology, Podiatry, Psychiatry, Radiology-Diagnostic

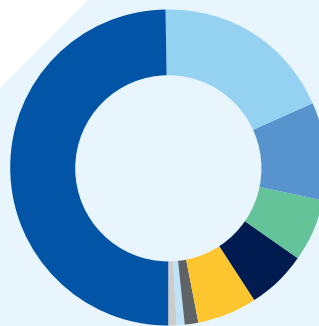
### 9 fellowship programs

Cardiovascular Disease, Child and Adolescent Psychiatry, Emergency Medicine Ultrasound, Gastroenterology, Hospice and Palliative Medicine, Maternal Fetal Medicine, Surgical Critical Care and Burn, Women's Imaging, Women's Global Health

## Serving the needs of the Phoenix community

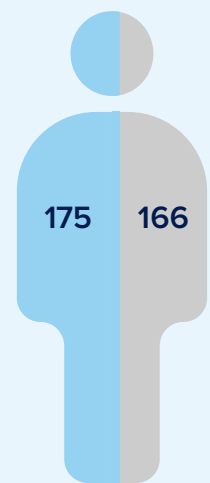
2025-2026 RESIDENTS AND FELLOWS

### RACE AND ETHNICITY



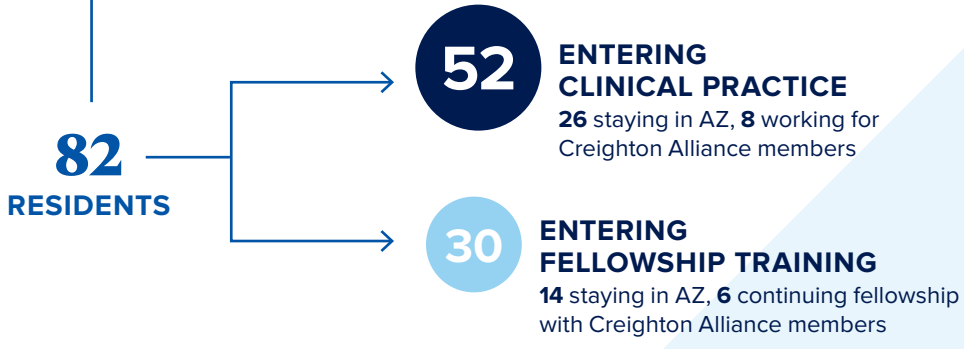
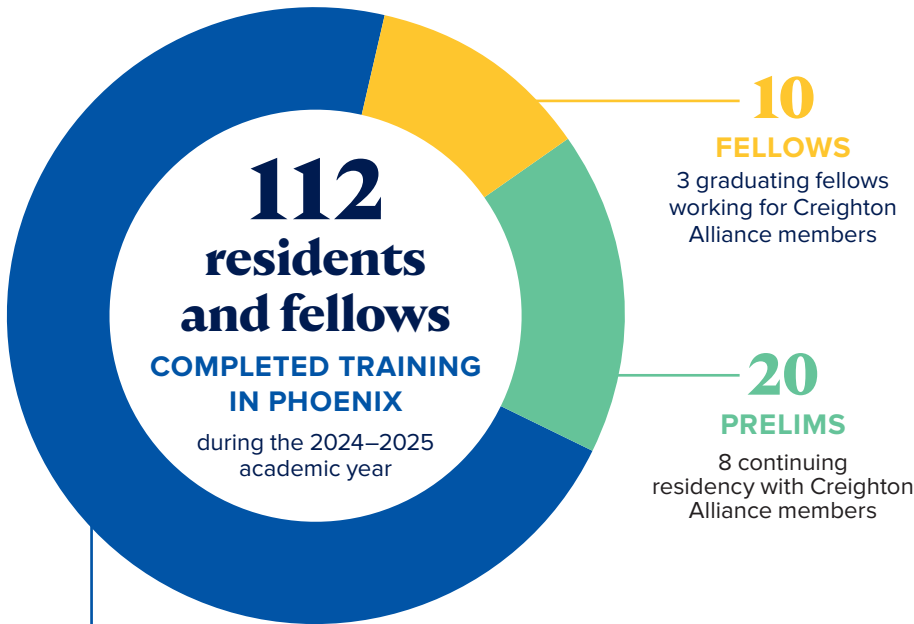
- 162 White
- 59 Asian
- 33 Asian Indian
- 29 Hispanic/Latino
- 24 Black/African American
- 24 Middle Eastern
- 5 Other or Not Provided
- 3 Native Hawaiian/Pacific Islander
- 2 American Indian/Alaskan Native

### GENDER DISTRIBUTION



175 Female

166 Male



**RESEARCH AND SCHOLARLY ACTIVITY**

